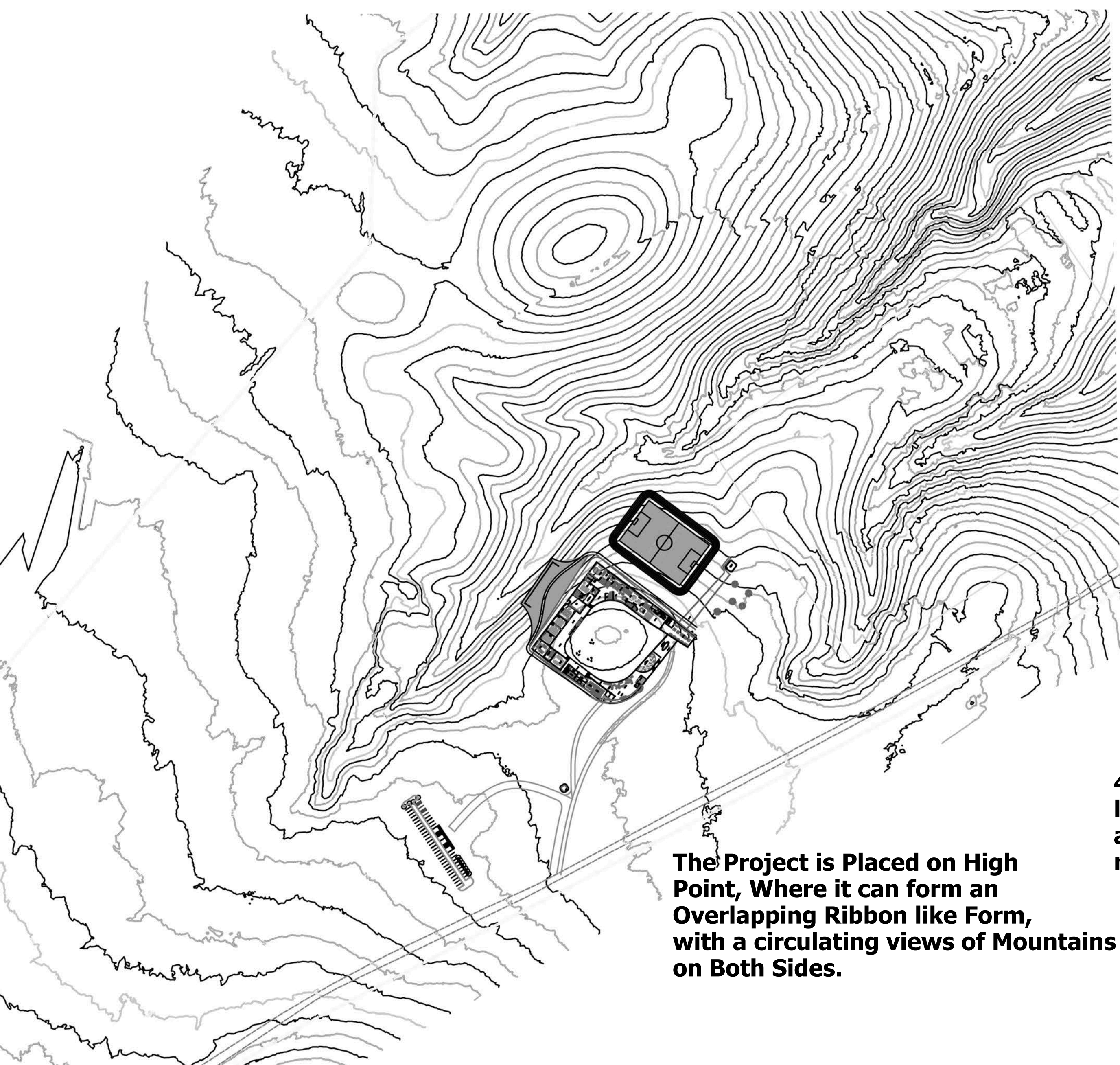




# articulating beneath mountains

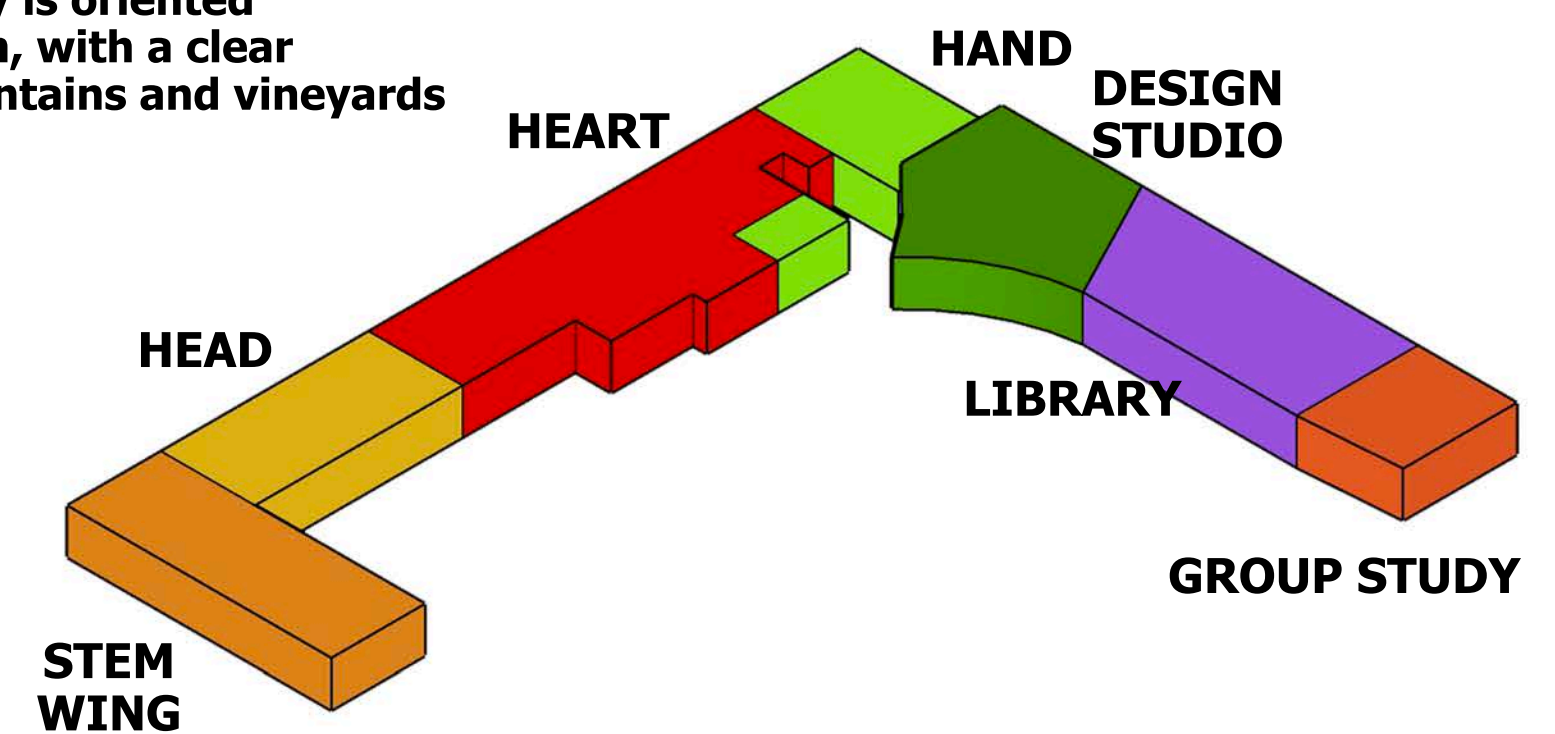
This smart campus is located in the heart of Armavir, with most captivating views of Mt. Ararat and Mt. Aragat. This campus is designed in a way to let the students showcase their talents and to train them effectively. This campus is a universe of talents which allows children to sprout and showcase their hidden gifts from a very young age .

The site of this project is in between one of the beautiful wonders of nature. It is enhanced by Mt. Aragats and Mt. Ararat is lying at the north and south ends. The campus is designed in a way to utilise the beauty of the mountains and Vineyards. Designed in a ribbon-like structure, the campus provides perfect views of the mountains while inside the campus premises. The cognite domain classrooms are planned in a way to let the students bring out their talents by relishing the beauty of nature. The arts studio has direct access to an outdoor green roof where the students have an option to work outside by taking a breath of fresh air and captivating views of Mt. Aragats.

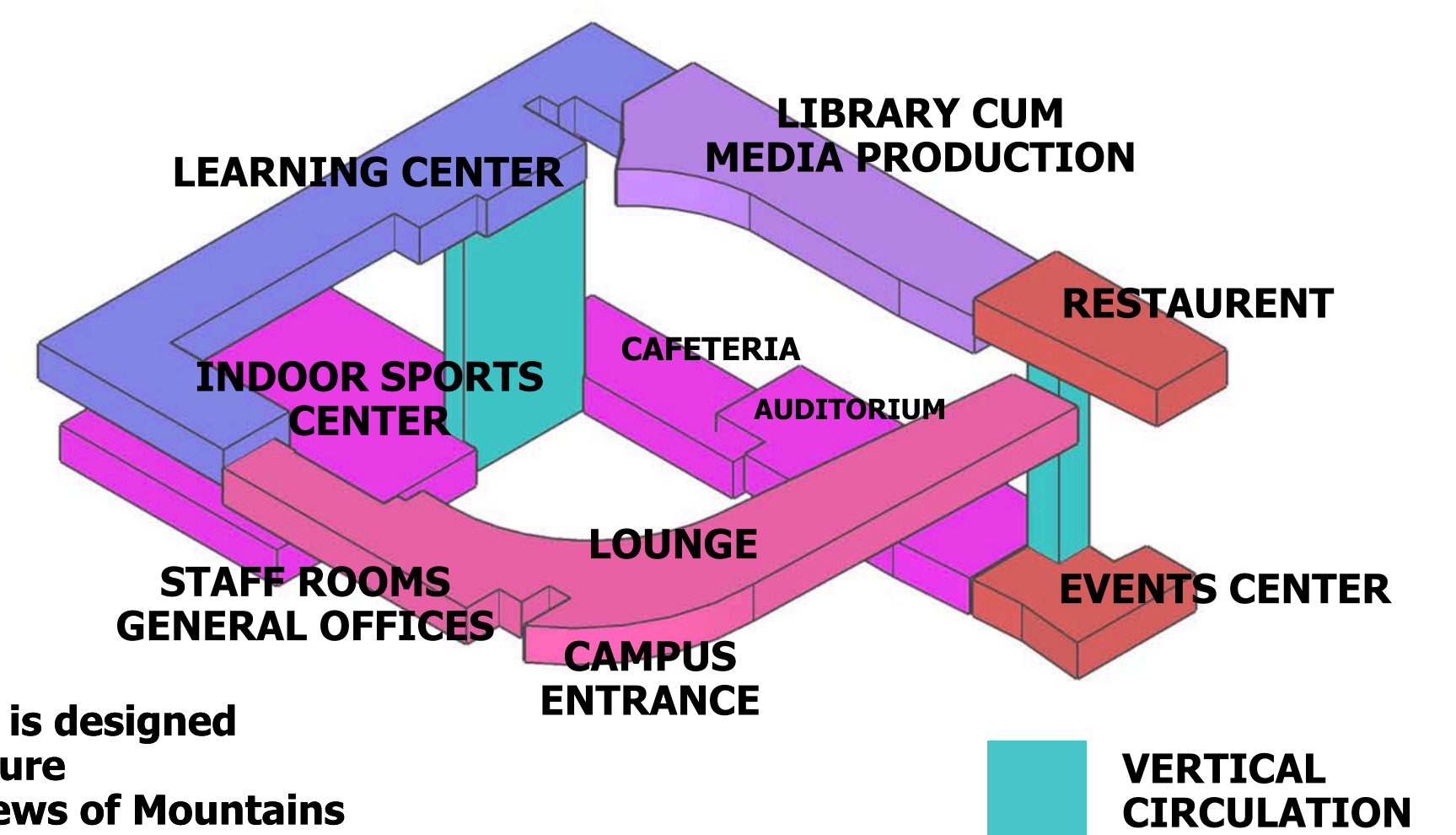


The Project is Placed on High Point, Where it can form an Overlapping Ribbon like Form, with a circulating views of Mountains on Both Sides.

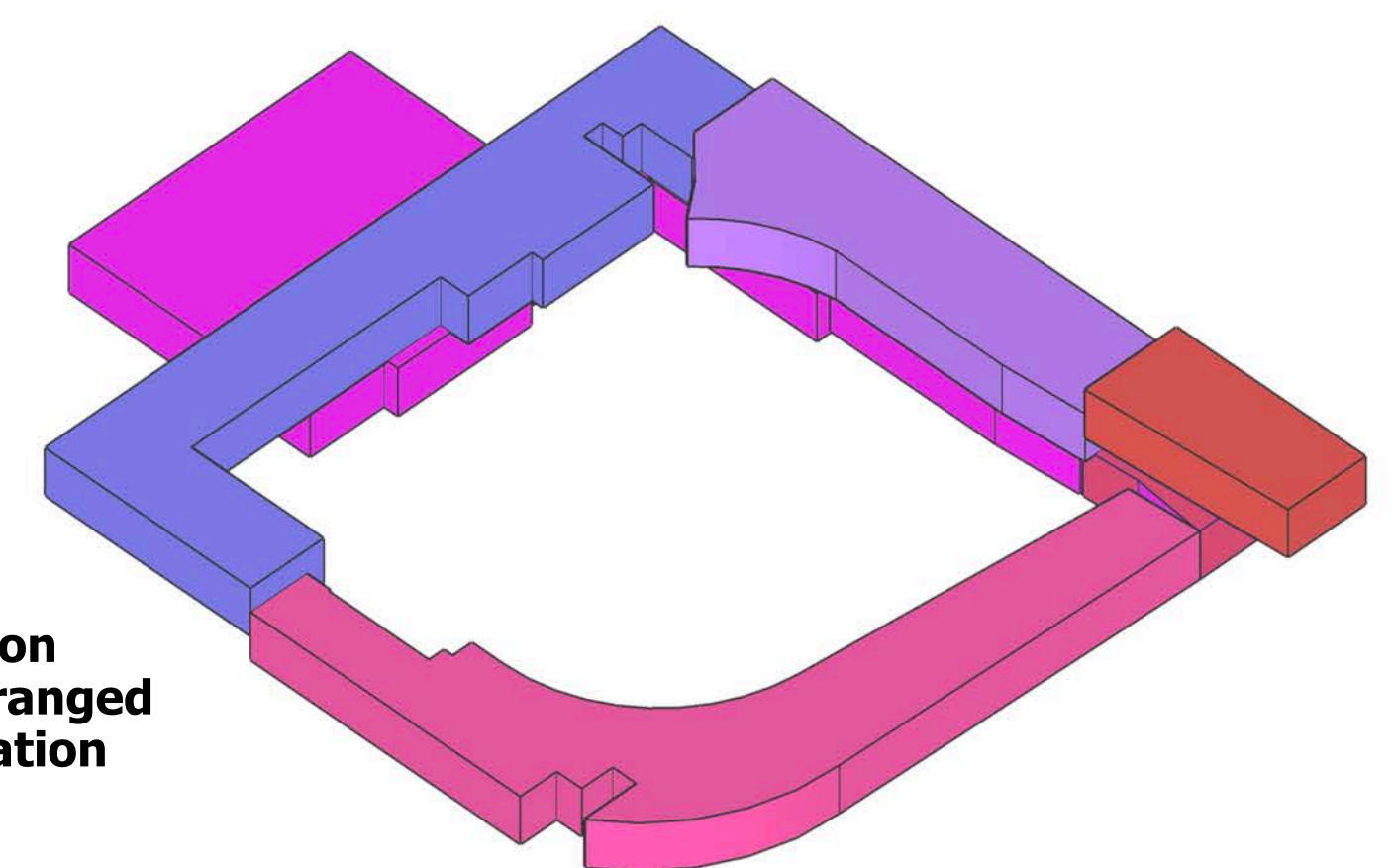
1. Education Facility is oriented to the northern region, with a clear vista to nearest mountains and vineyards on the Campus Site.



2. The Smart Campus is designed in a Ribbon like Structure to Provide both the views of Mountains and also creates a Courtyard Space, where student can perform events which connects to other spaces



3. The Education Facilities all arranged in single circulation

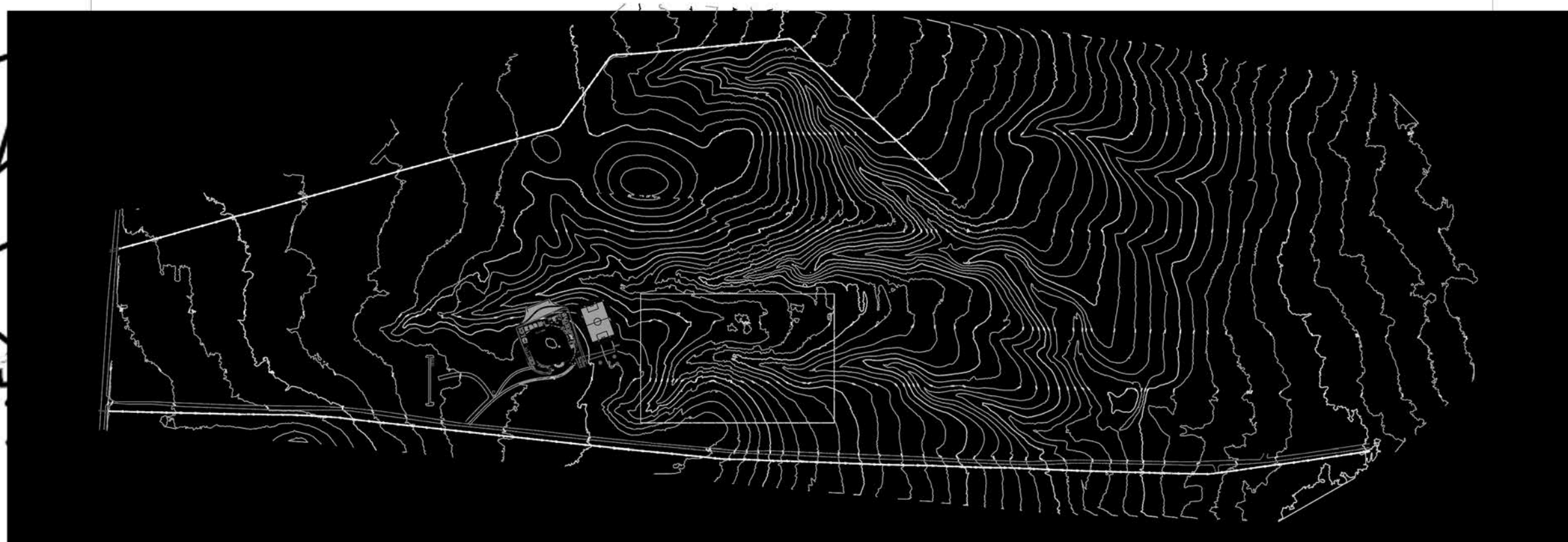


GREEN ROOF FOR AFFECTIVE DOMAIN AREA

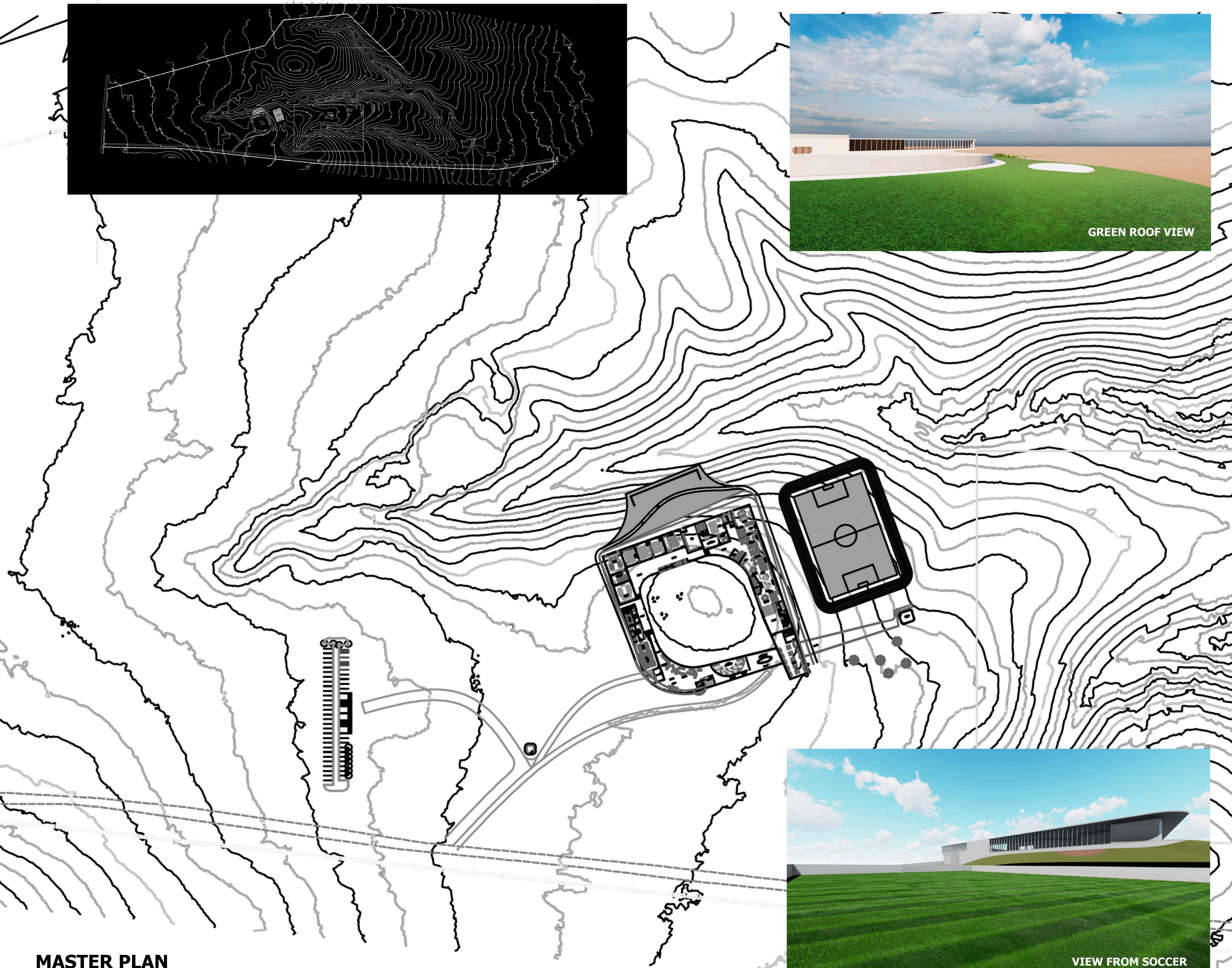


4. Due to its Ribbon like structure, All Spaces are connected accordingly with respective programme.





GREEN ROOF VIEW

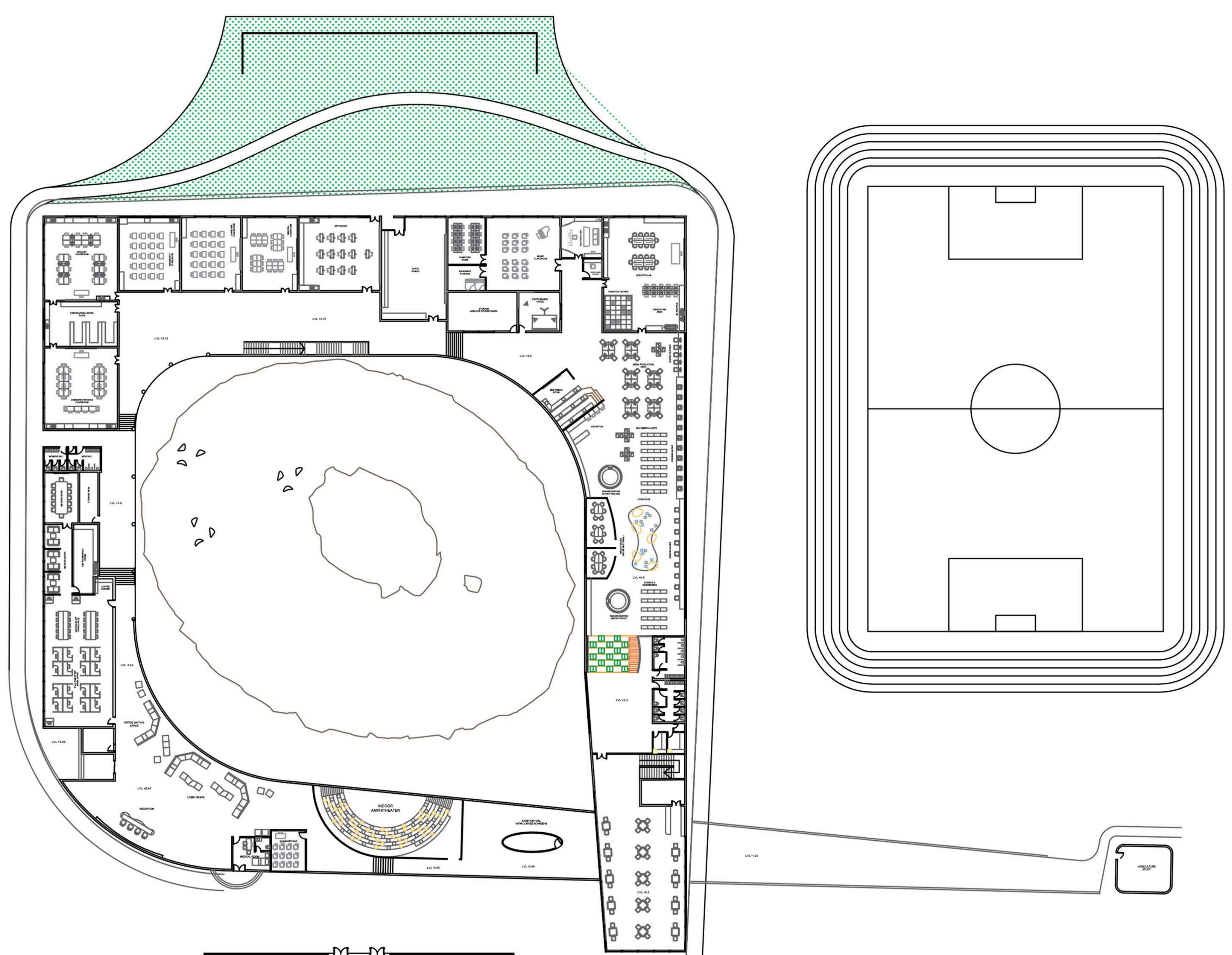


MASTER PLAN



VIEW FROM SOCCER FIELD





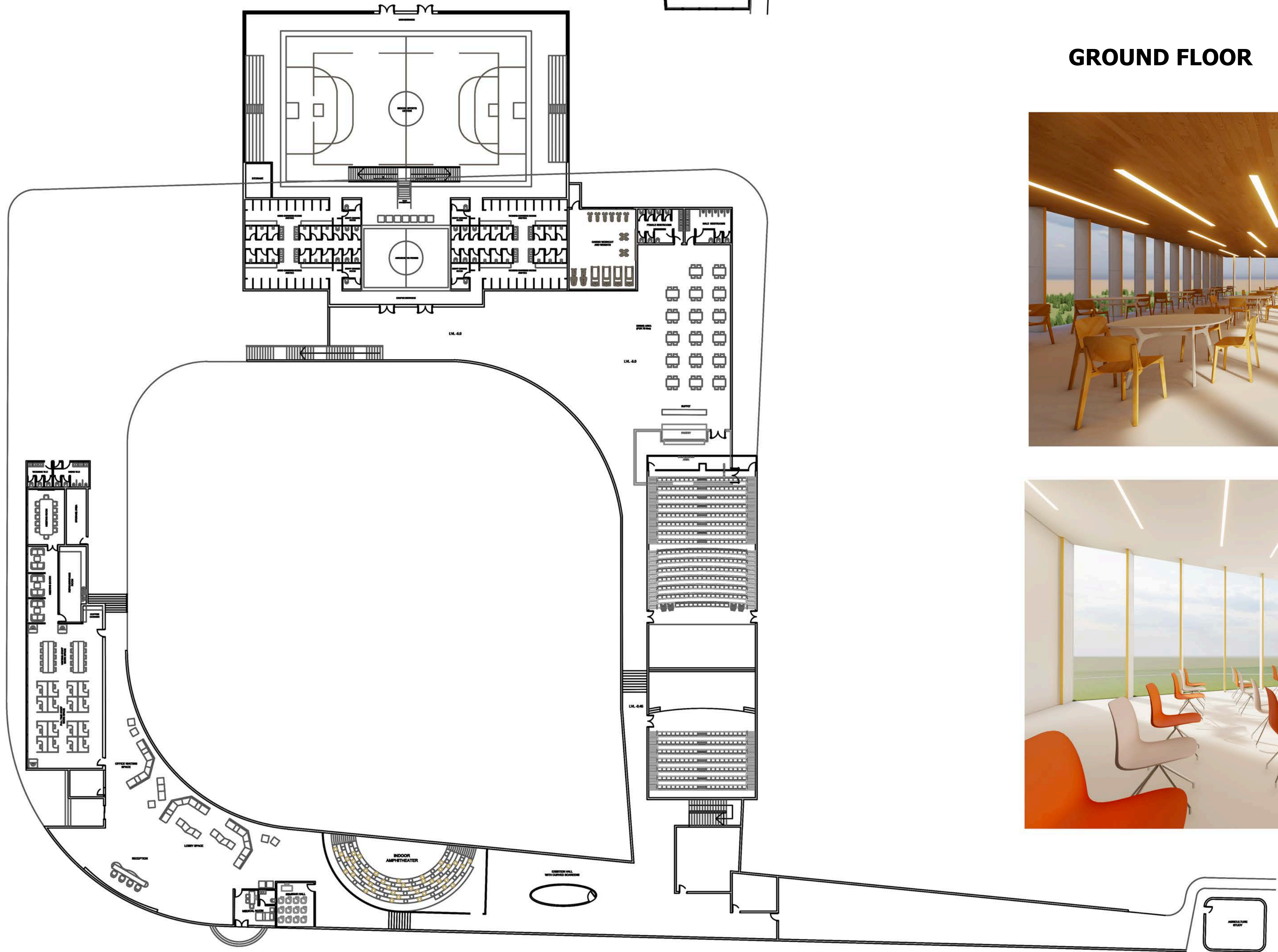
GROUND FLOOR



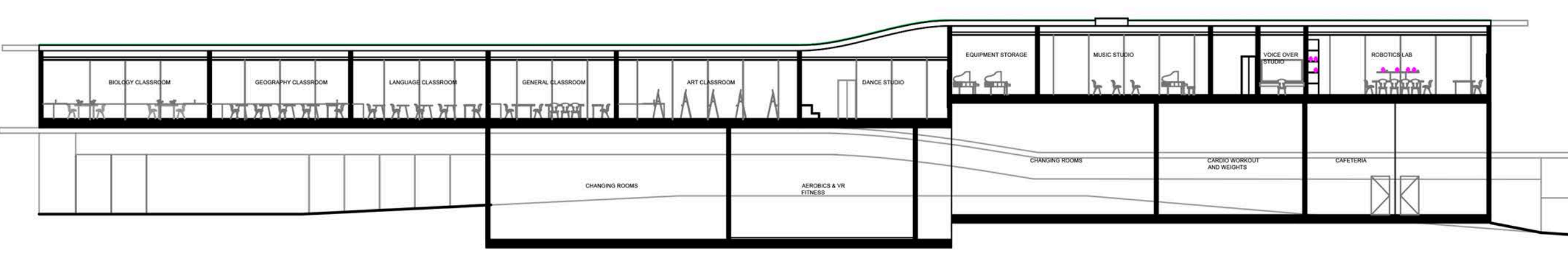
RESTAURANT VIEW



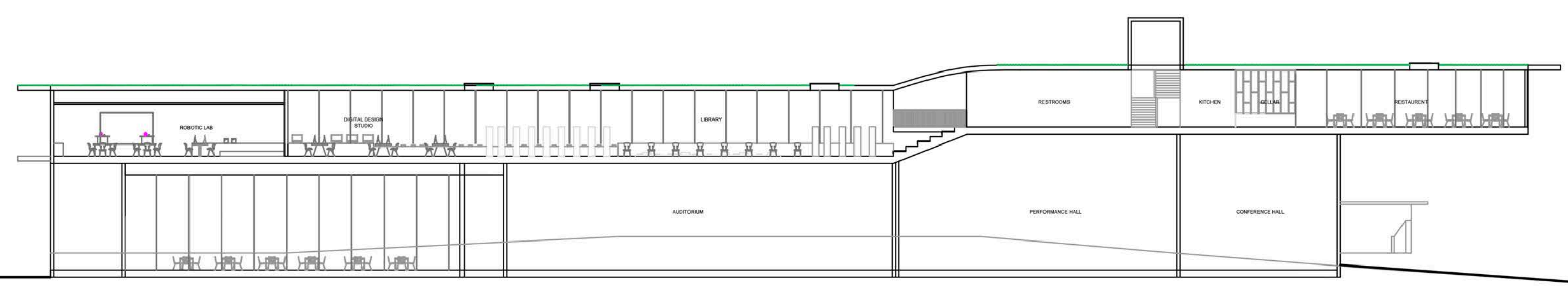
MUSIC ROOM



LOWER FLOOR



SECTION A-A



SECTION B-B

