



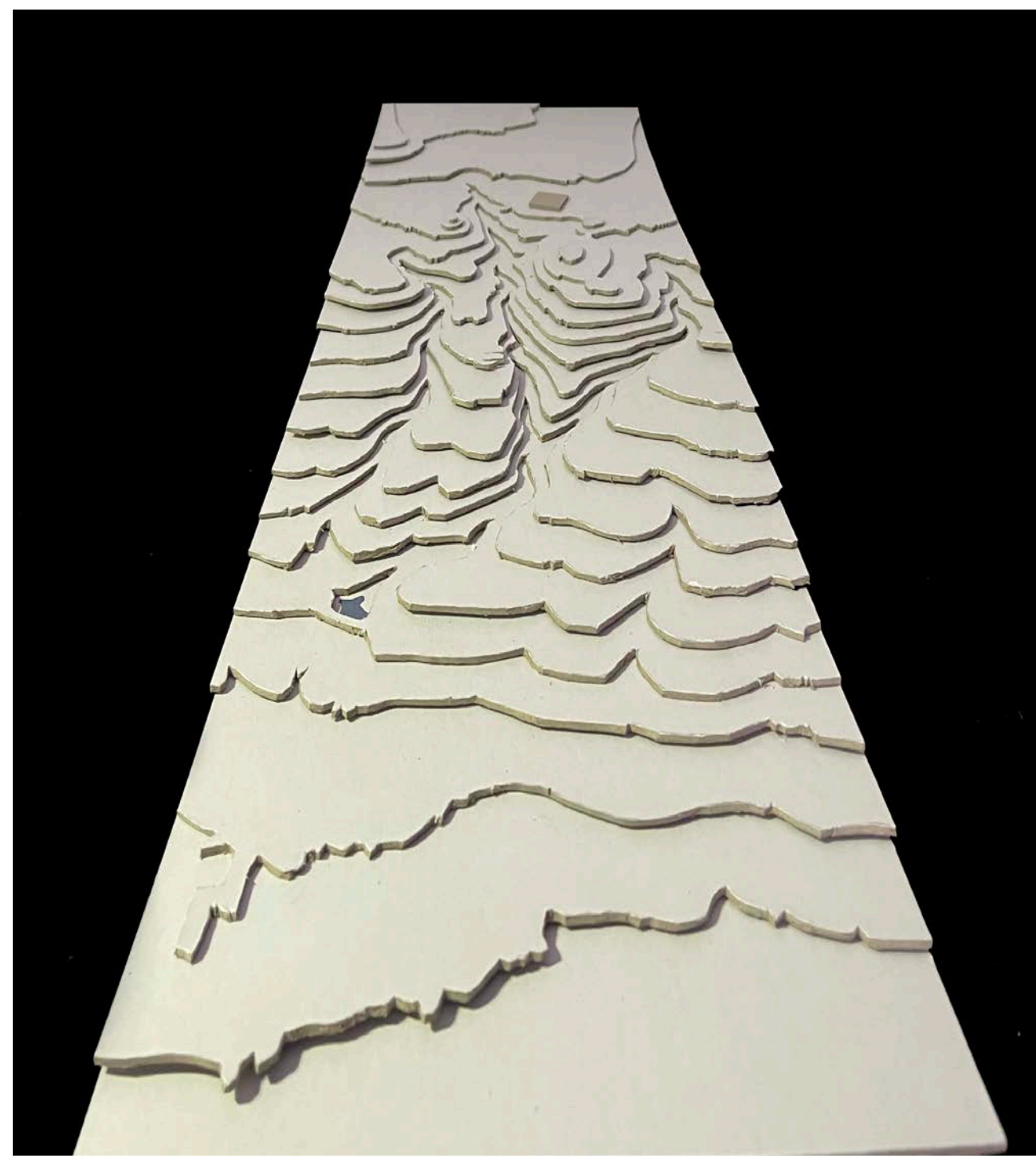
Concept:v

Culture : Մշակույթ
 Heritage : Ժառանգություն
 Future : Ապագա

Our aim was to create a new landmark on site, this would be a beacon of hope and prosperity for the local young population. The tower acts as a landmark and a statement piece to show the Armenian spirit & resilience.

The Tower is located directly in the view of the Ararat mountain this is to always make it visible for the students and visitors and be a statement piece of the unity and draw focus on the future of Armenia.

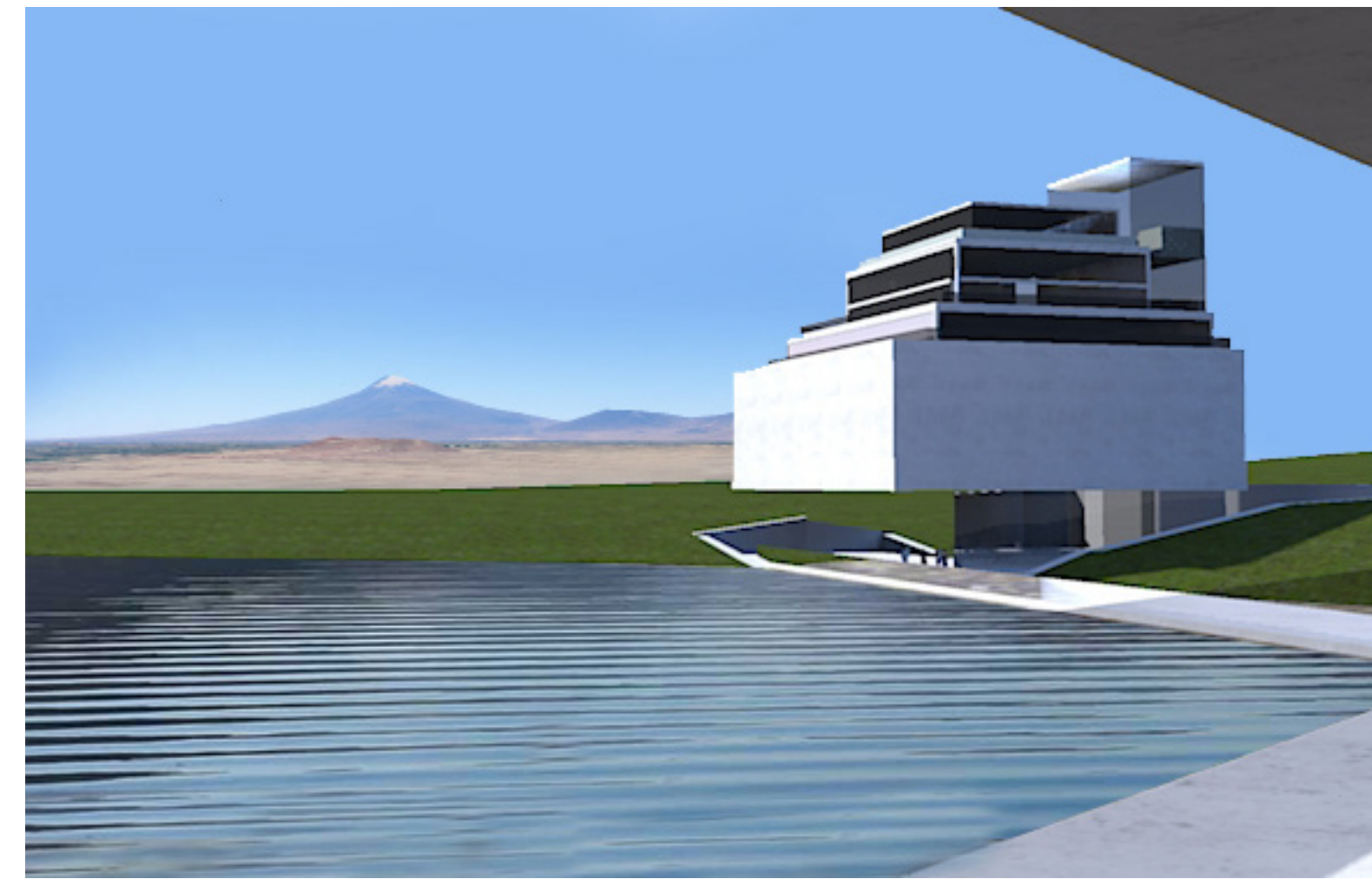
The tower rises from the dry landscape just like a Phoenix rising from the ashes and flies high.



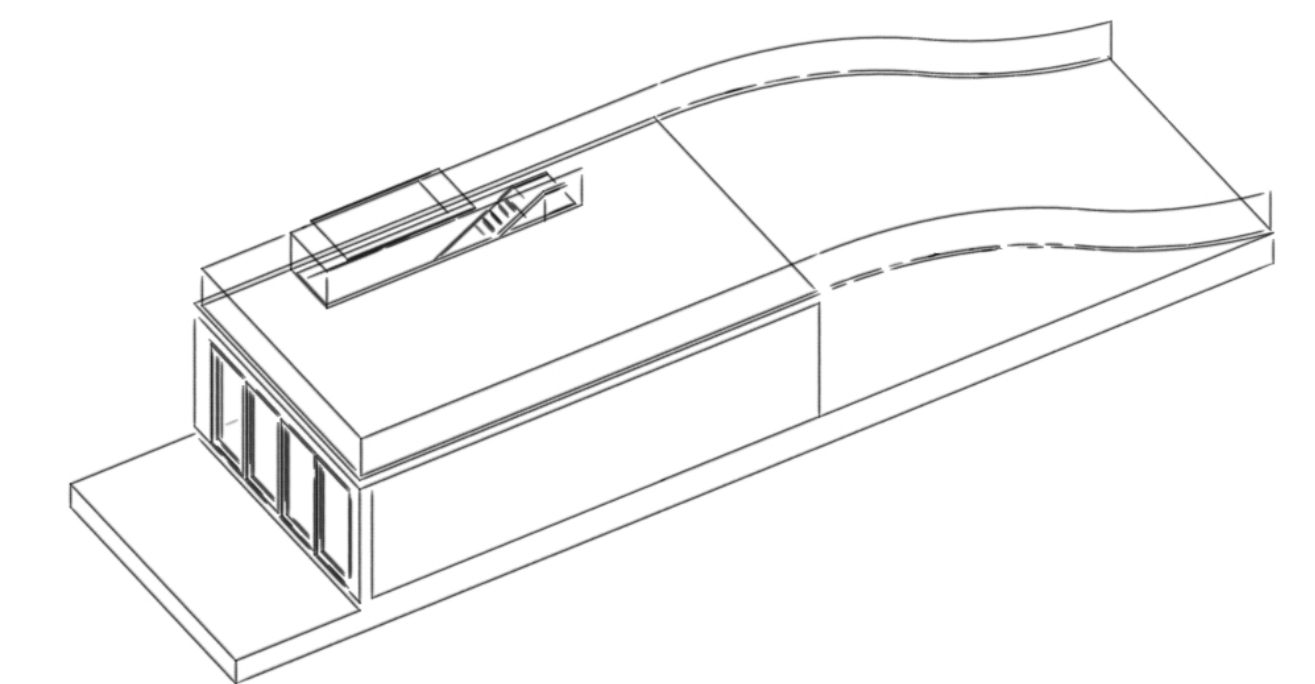
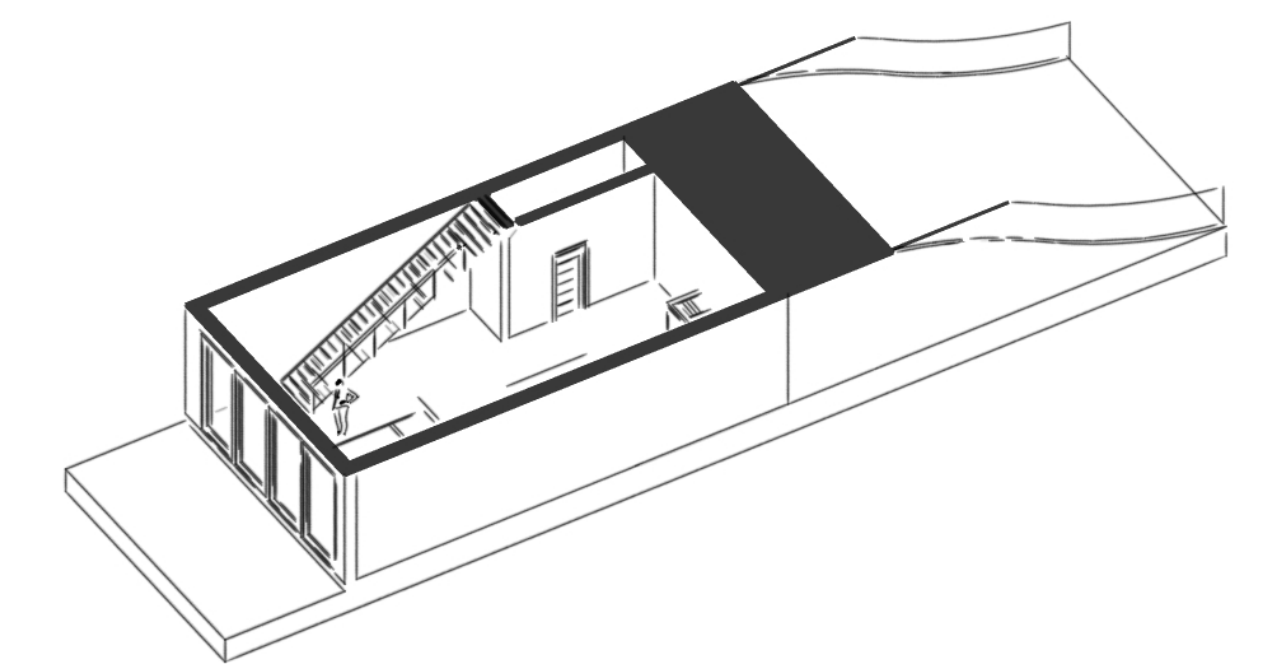
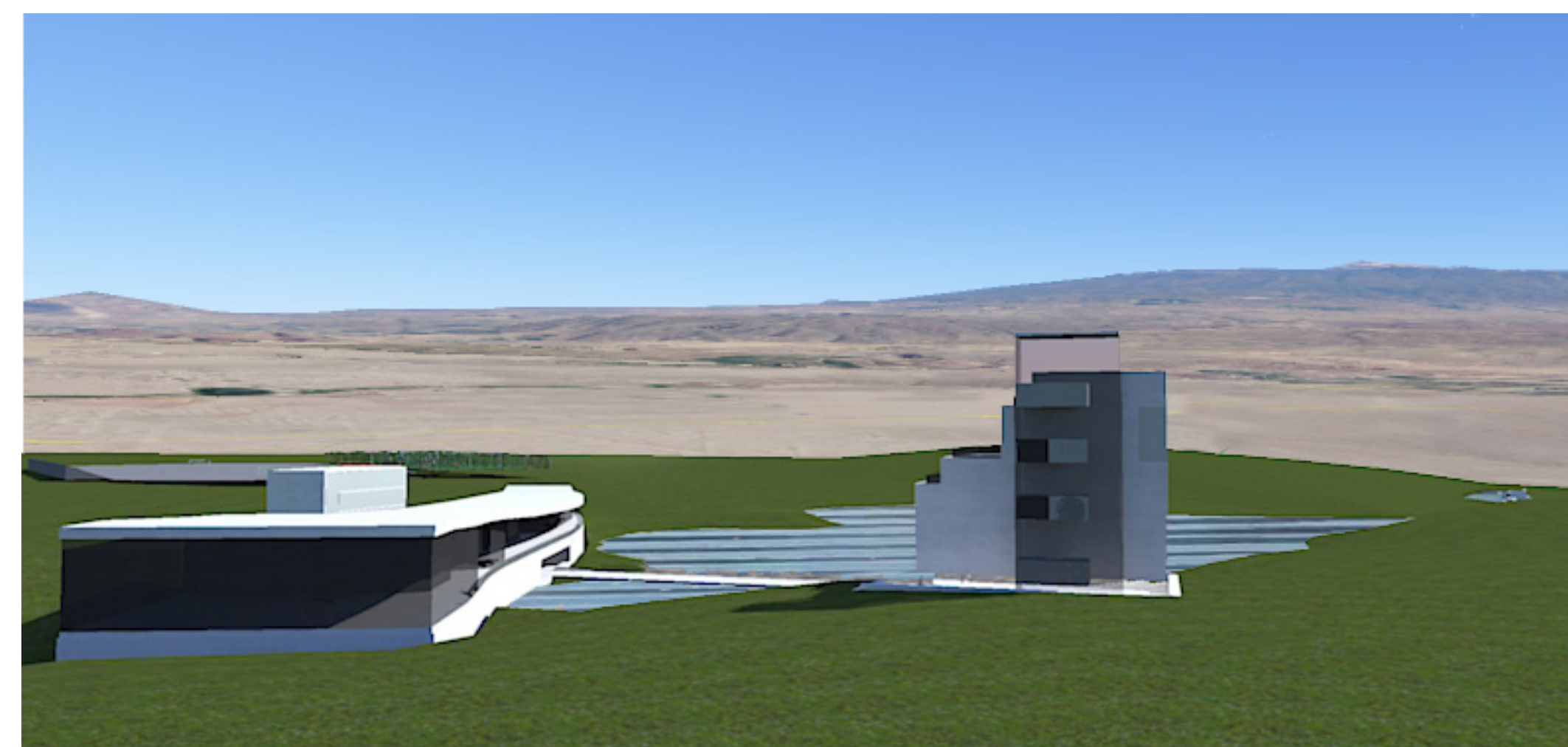
Physical site model:

We created a Physical site model to help us better understand the site elevations.

South View from the school tunnel to the corporate events building with the Ararat Mountain in the background

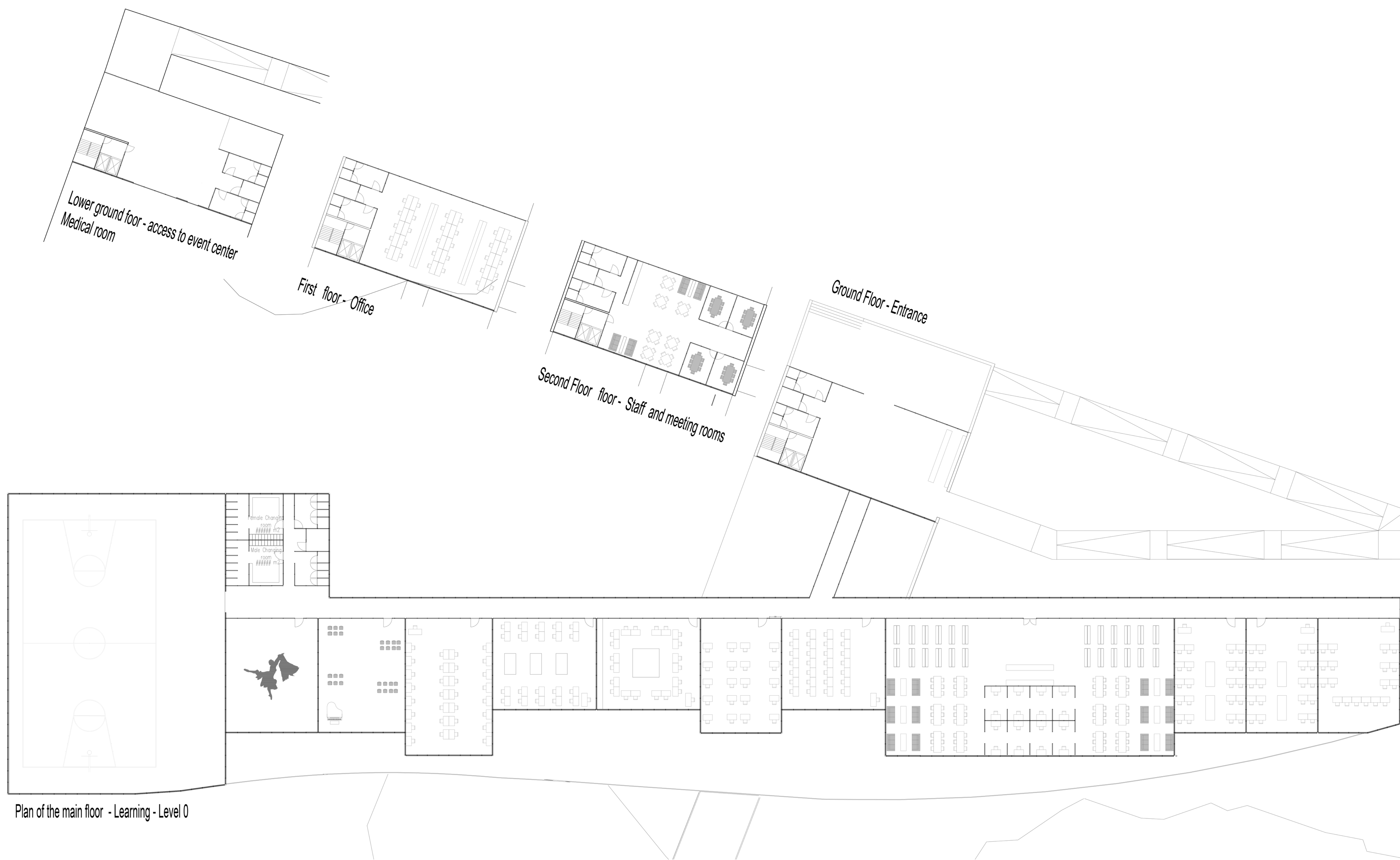


North View onto the school building and corporate building with lake in between the two and Aragats mountain in the background

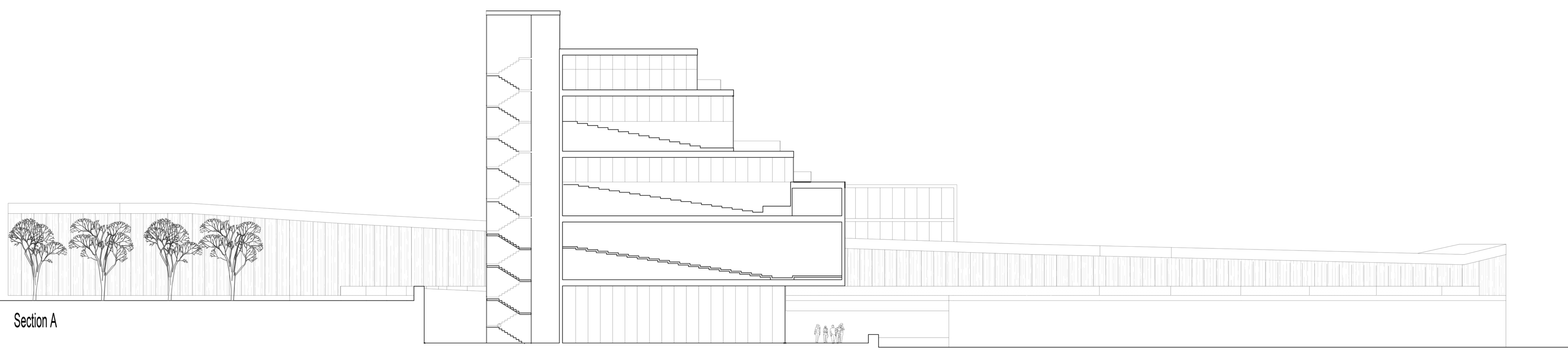


YOGA retreats:

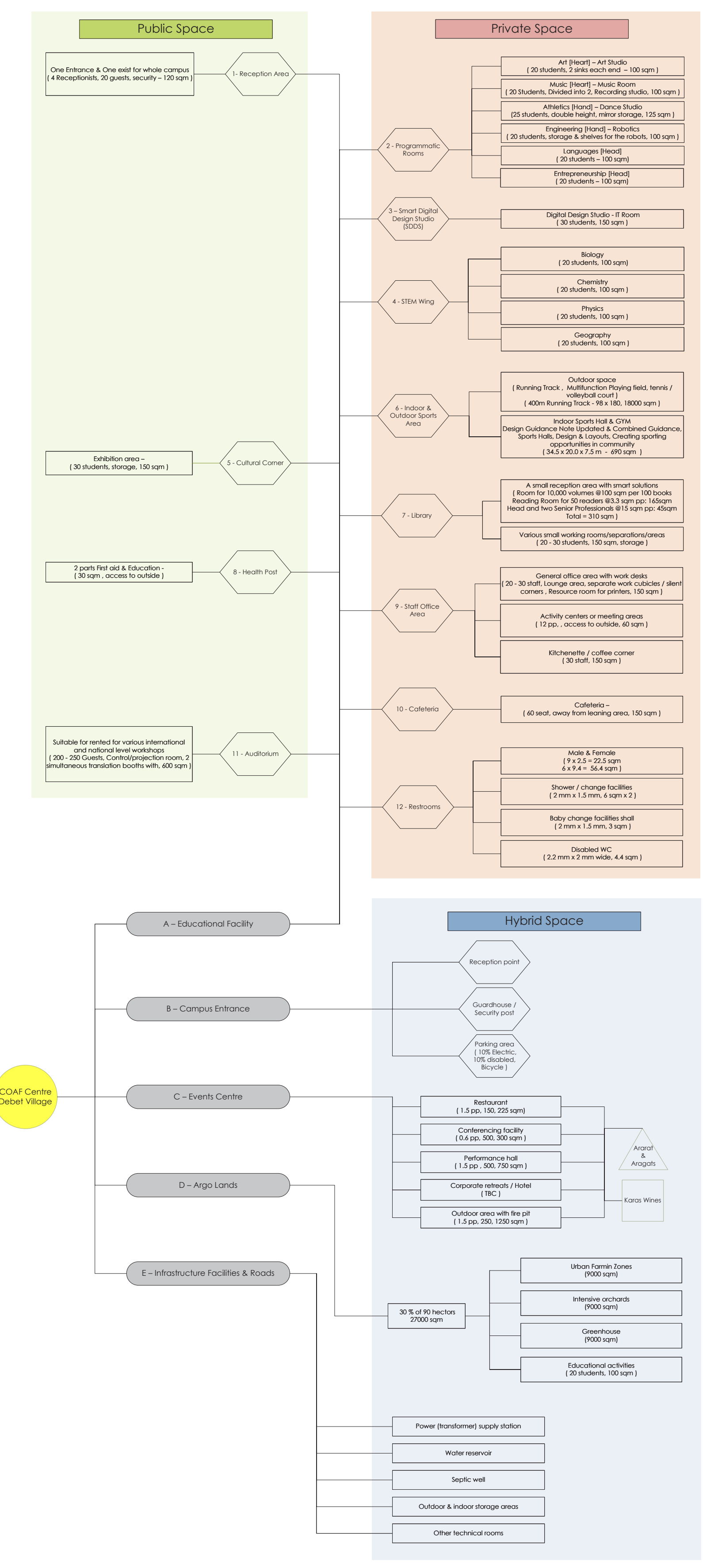
Above 3D visuals of the YOGA retreat which are to set of the coutored lanscape



Plan of the main floor - Learning - Level 0

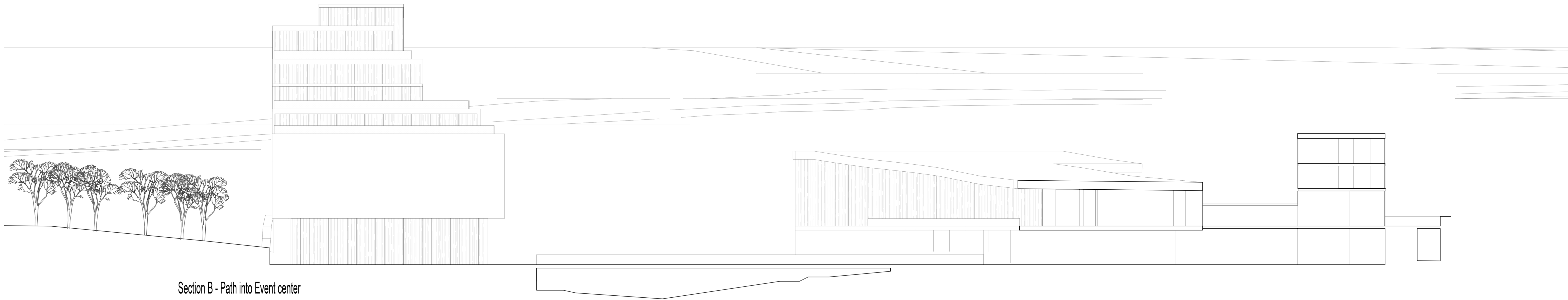


Section A

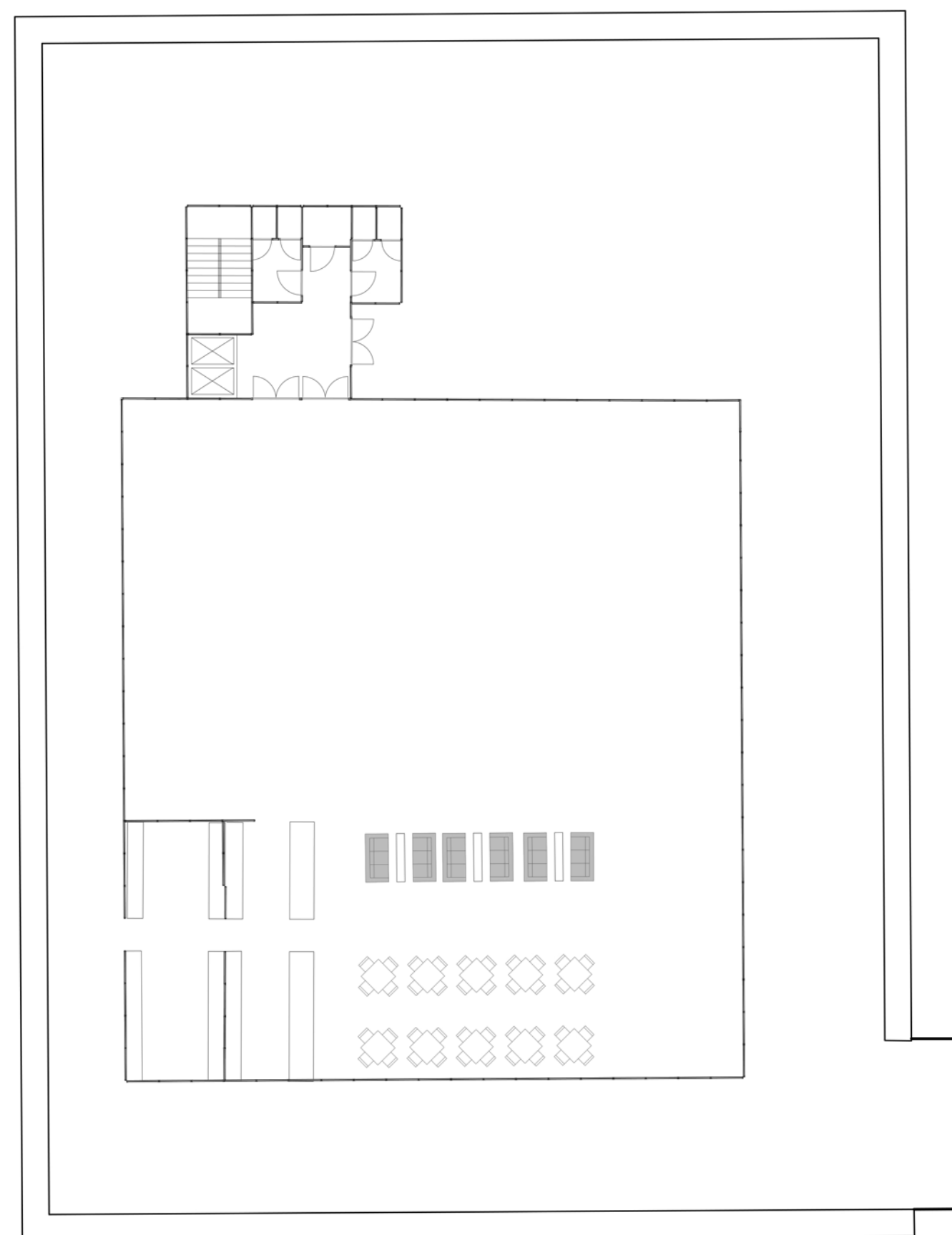




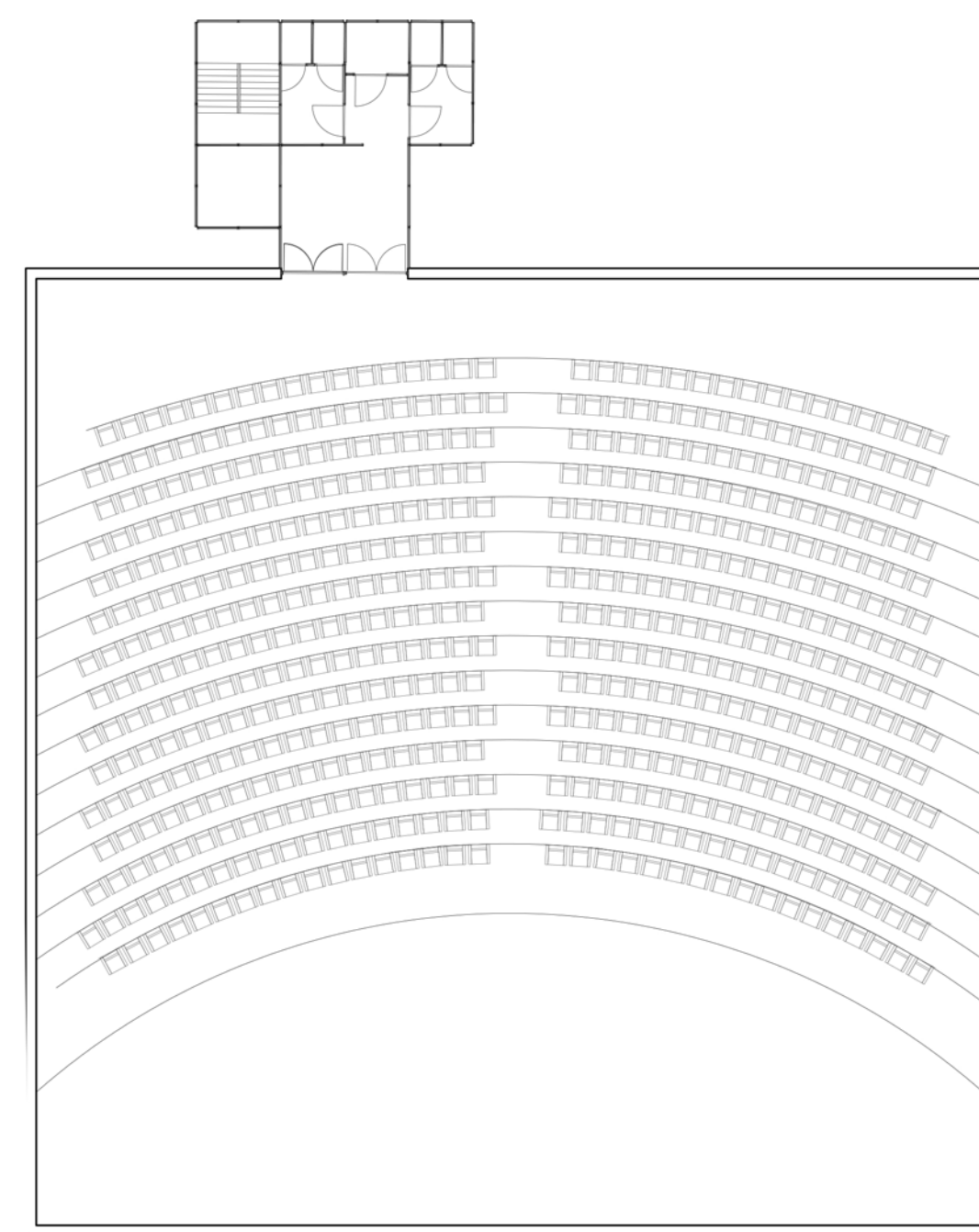
East elevation



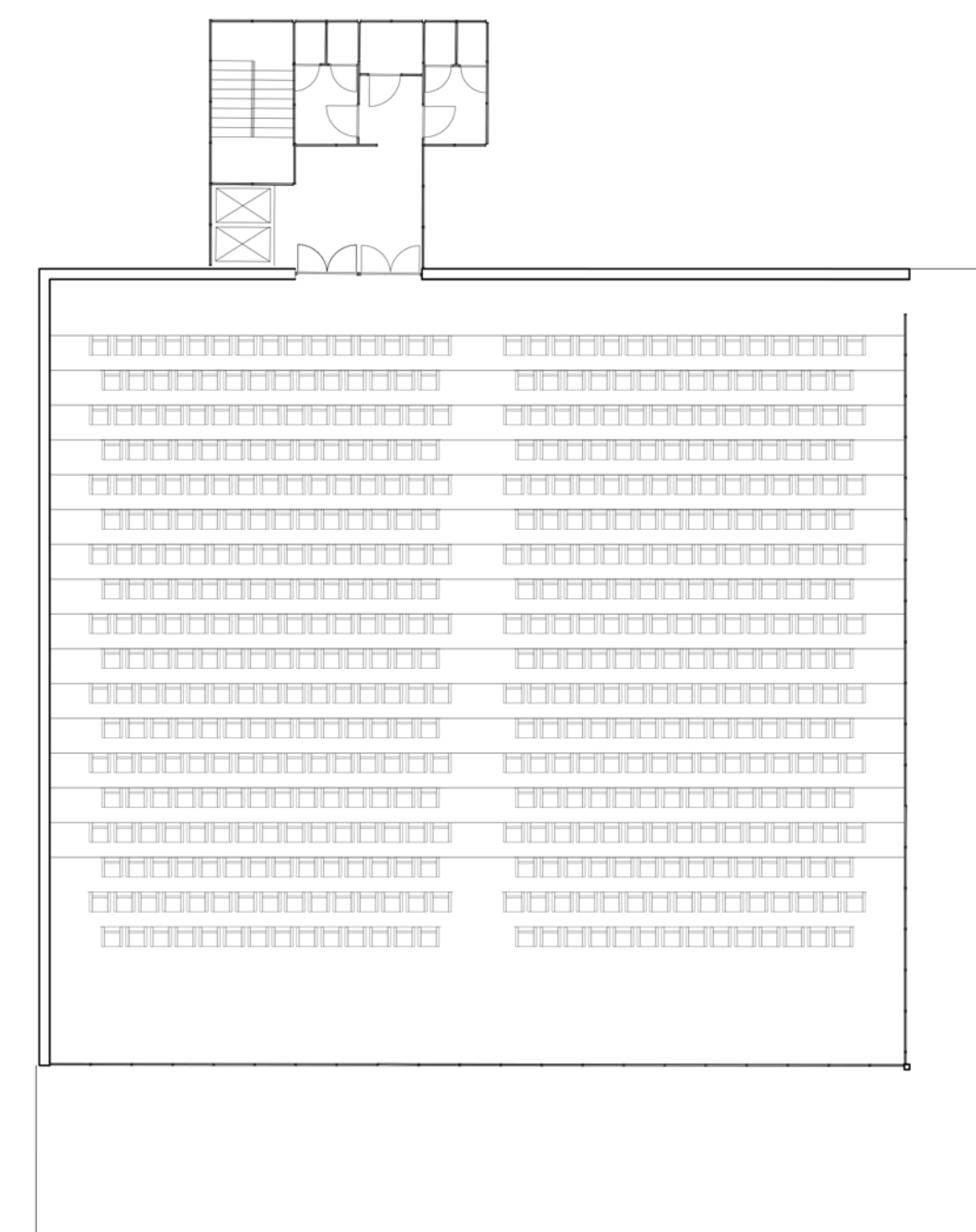
Section B - Path into Event center



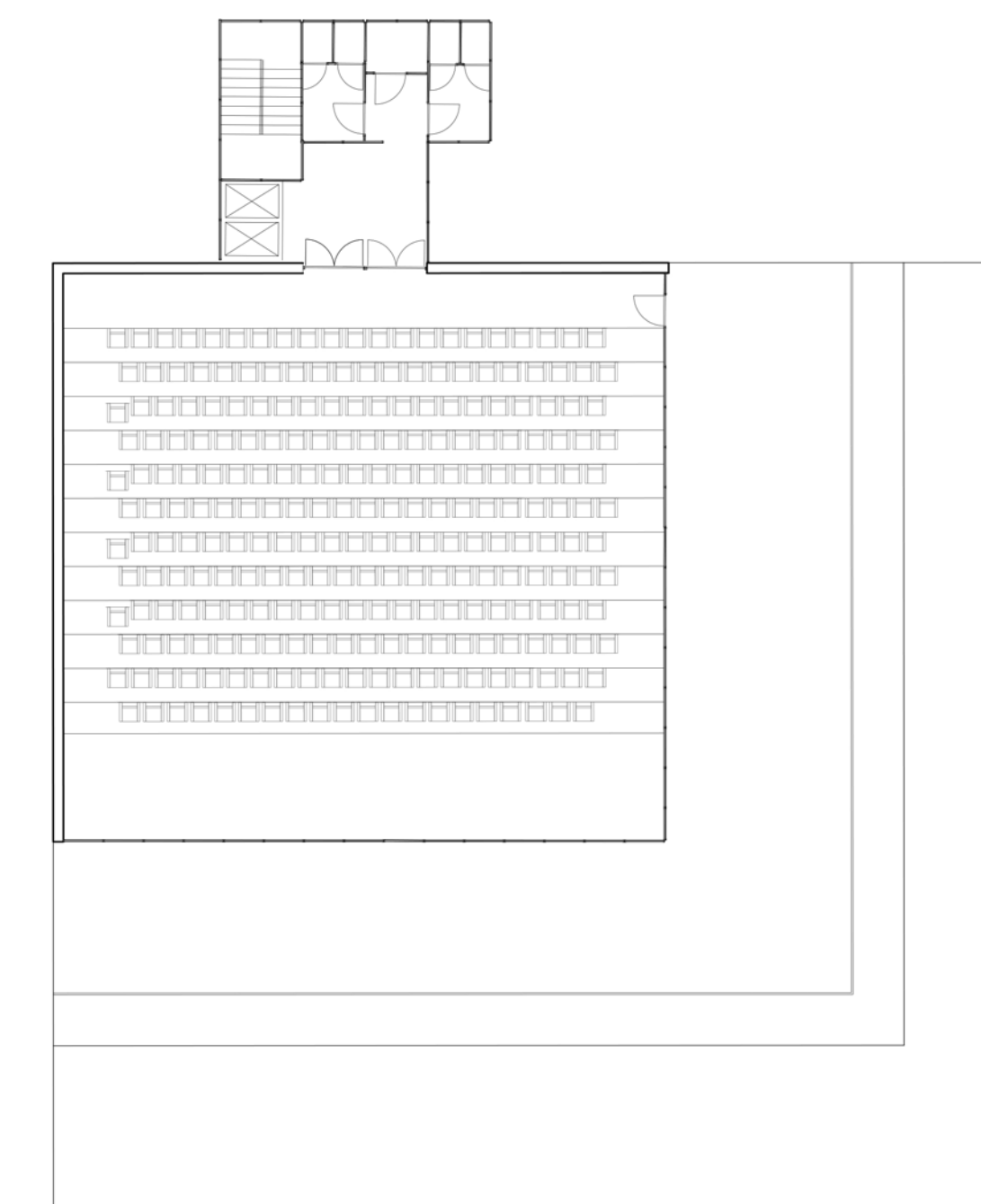
Ground Floor - Cafeteria, Exhibition area



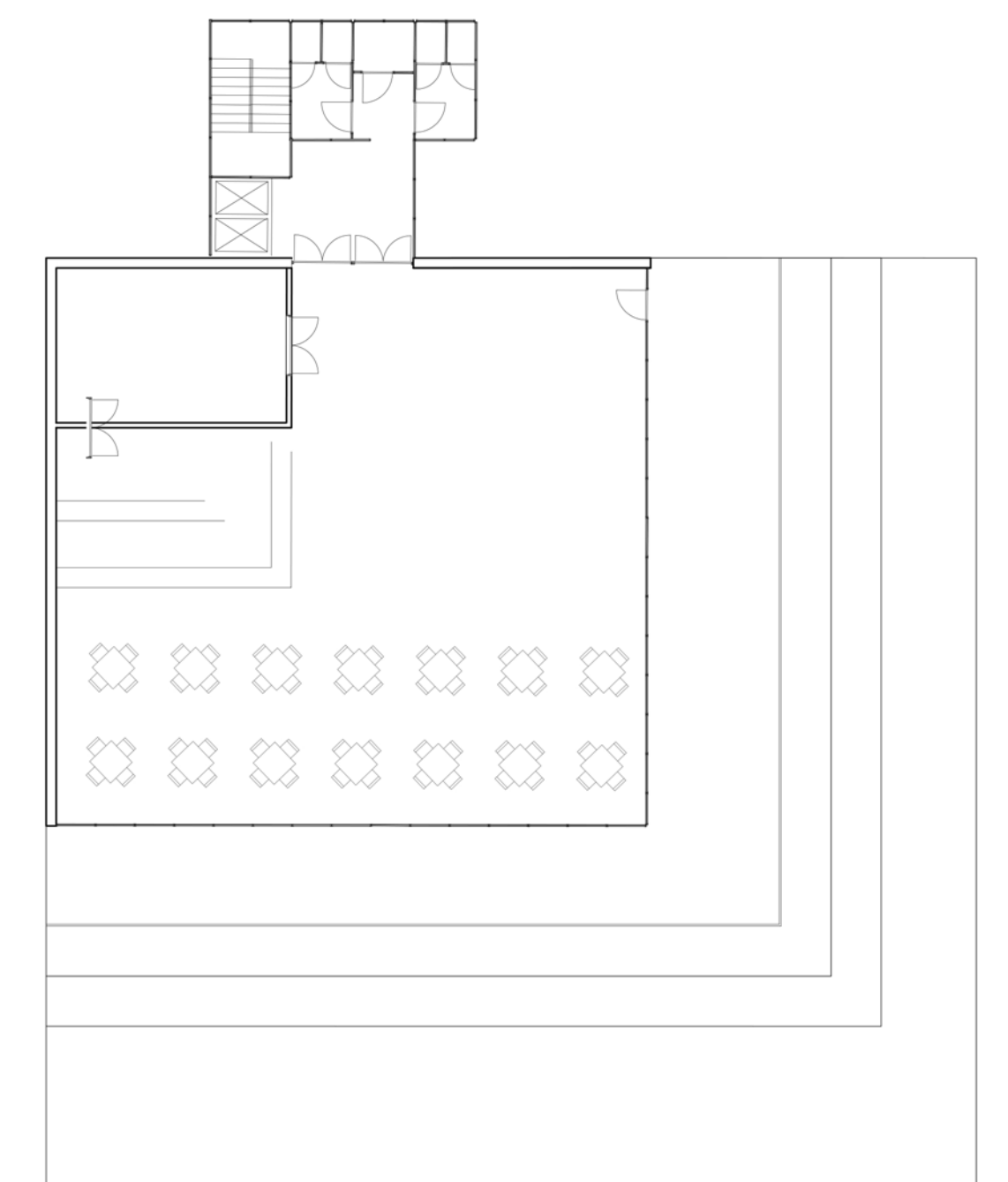
First Floor - Performance



First Floor - Auditorium



First Floor - Conference facility



4th Floor - Restaurant