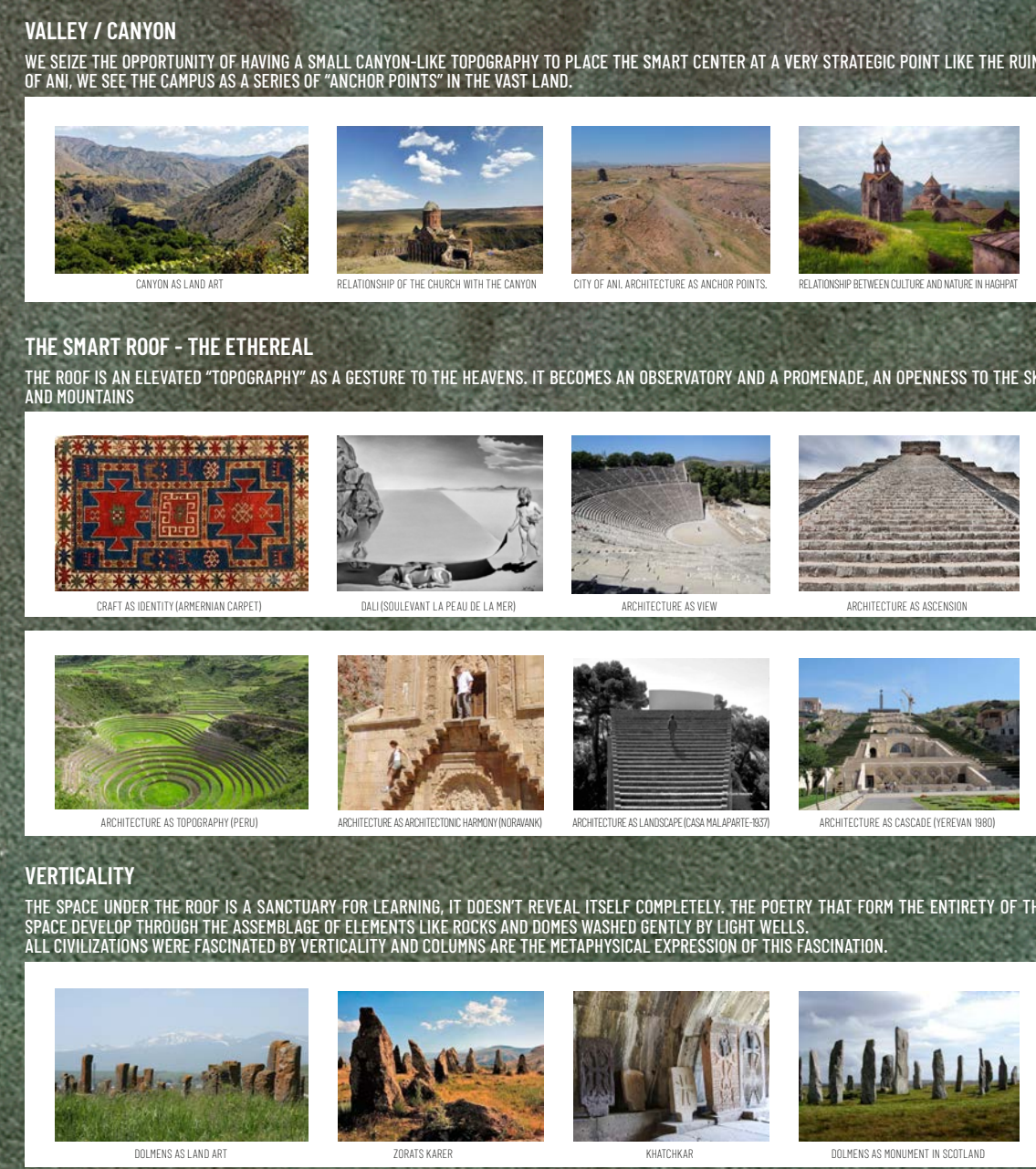


SITE PLAN: THE CAMPUS



THE ARMAMIR SMART CENTER WILL REFLECT THE BEAUTY AND UNIQUENESS OF THE PLACE. LIKE THE LORI SMART CENTER WE WANT TO CREATE A SENSE OF BELONGING TO THE MOTHERLAND. THE CONTEXT IS HEAVILY CHARGED WITH SYMBOLIC POWER THAT WILL SHAPE THE PROJECT. SURROUNDED BY MOUNTS ARARAT AND ARAGATZ AND BEING CLOSE TO THE TURKISH BORDER, THE BUILDING WILL ACQUIRE DEEP MEANING.

IMAGINATION IS THE RESOURCE WE HAVE TO REINVENT THE WORLD AROUND US. WE STARTED TO THINK OF THE CARPET AS A GATHERING PLACE, A PLACE TO REST BUT ALSO A PLACE OF HARMONY AND BEAUTY. A CARPET ON A BIG SCALE CAN BECOME A LANDMARK IN THE VASTNESS OF THE LANDSCAPE. WE WANT TO CREATE A NEW TOPOGRAPHY AS A STRONG RESONANCE TO THE ARMENIAN MOUNTAINS AND VALLEYS. AN ESPLANADE AS AN ELEVATION TOWARDS THE SKY: A ROOF AS A METAPHYSICAL EXPERIENCE.

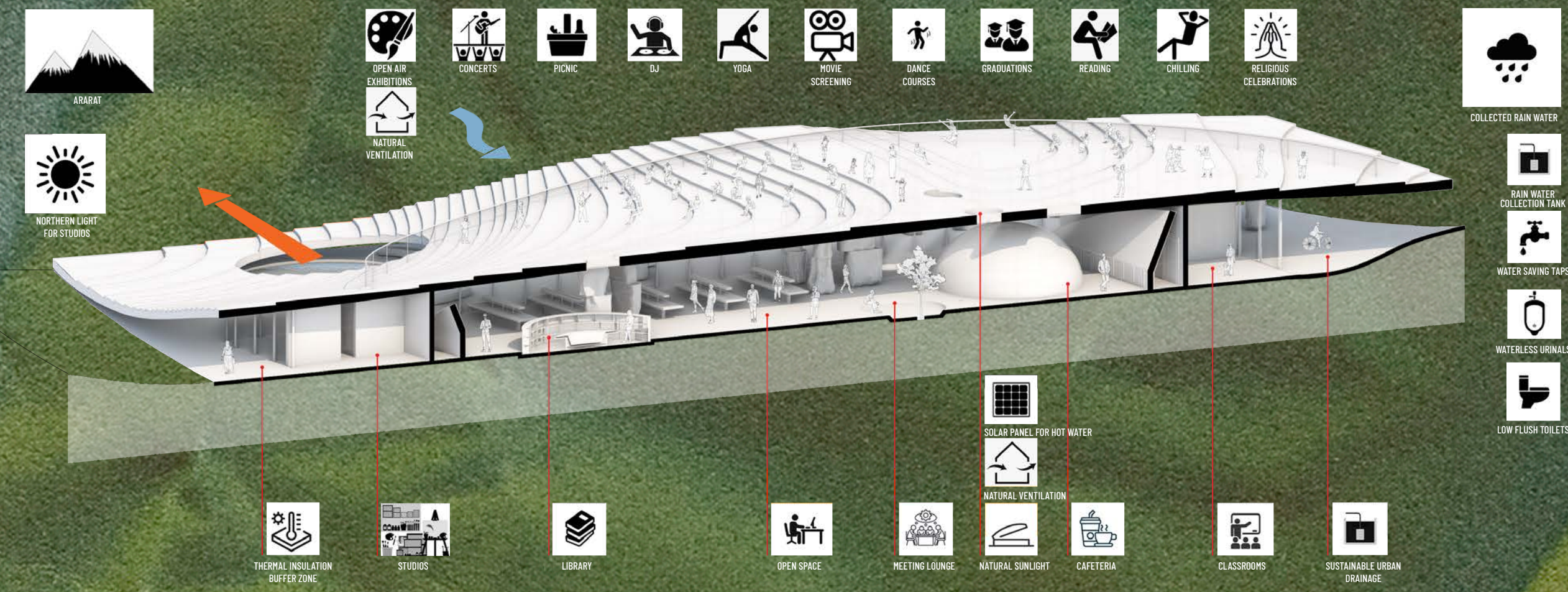
THE CHALLENGE IS TO CREATE A BUILDING ROOTED IN ITS CONTEXT AS IT IS CHARGED WITH HISTORICAL AND EMOTIONAL MEANING, BUT ALSO A BUILDING THAT REACHES THE UNIVERSAL INSIDE EVERYONE OF US. BY ELEVATING THE ROOF, THIS NEW TOPOGRAPHY BECOMES LIGHT AND FLOATING OVER THE LANDSCAPE, LIKE A MONUMENT IT RELATES TO "THE SACRED". THE SMART CENTER BECOMES A MONUMENT TO THE SUBLIME. A GESTURE OF UNWAVERING HOPE.

AS IN DALI'S PAINTING DEPICTING HIMSELF AS A CHILD UNCOVERING THE SKIN OF THE SEA TO FIND A DOG IN THE SHADOW OF THE SEA, WE ARE INVITED TO DISCOVER WHAT'S UNDER THE FLOATING ROOF AND FIND THE ESSENTIAL: A SANCTUARY FOR LEARNING.



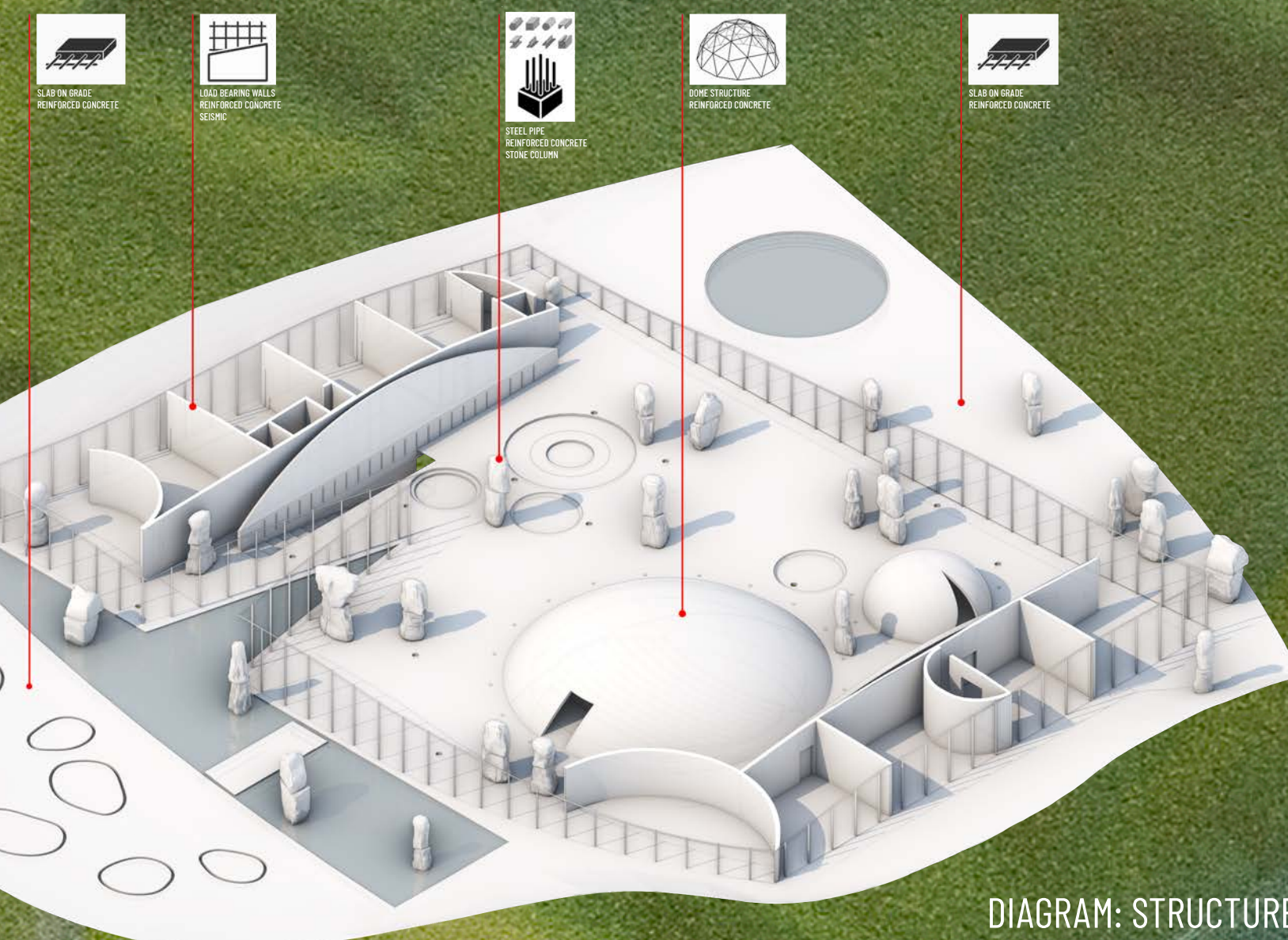
SMART ROOF

THE SUSPENDED ROOF ALLOWS MULTIPLE ACTIVITIES WHILE OFFERING NEW PERSPECTIVES AND RELATIONS TO NATURE. PRIMARY, IT ACTS AS A SHADING DEVICE FOR THE FUNCTIONS BELOW. THE OPENINGS AND SKYLIGHTS BRING NATURAL LIGHT AND VENTILATION. WATER COLLECTED FROM RAIN WATER HARVESTING SYSTEM WILL BE USED FOR MULTIPLE BENEFITS AND PROVIDE COST SAVING AND EFFICIENCIES.



A SANCTUARY FOR LEARNING

THE STRUCTURE IS THERE TO EXPRESS ITS FUNCTION AND PLAYS A ROLE IN CREATING A FLUID SPACE WITH POWERFULLY PRESENT ANCHORS: WALLS, DOMES AND ROCKS. LIKE IN A LANDSCAPE WE MOVE AROUND THESE ELEMENTS WITH A SENSE OF DISCOVERY.



SCULPTURES

COLUMNS DEPART FROM THEIR STRUCTURAL ESSENCE TO BECOMES A SERIES OF ABSTRACT SCULPTURES.

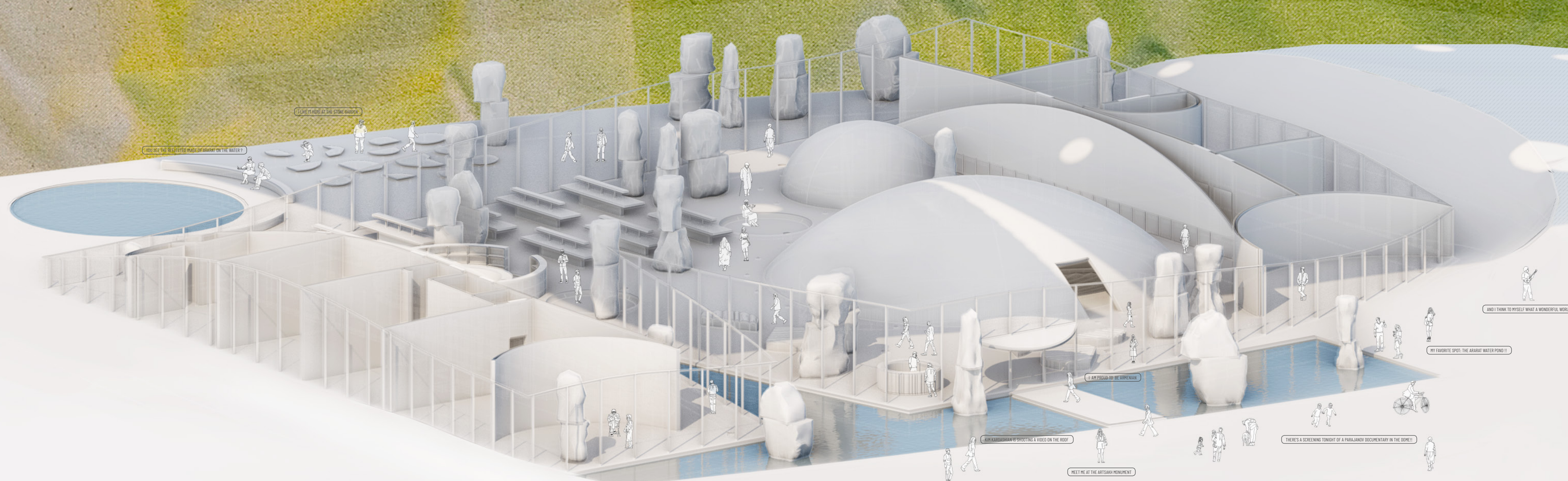


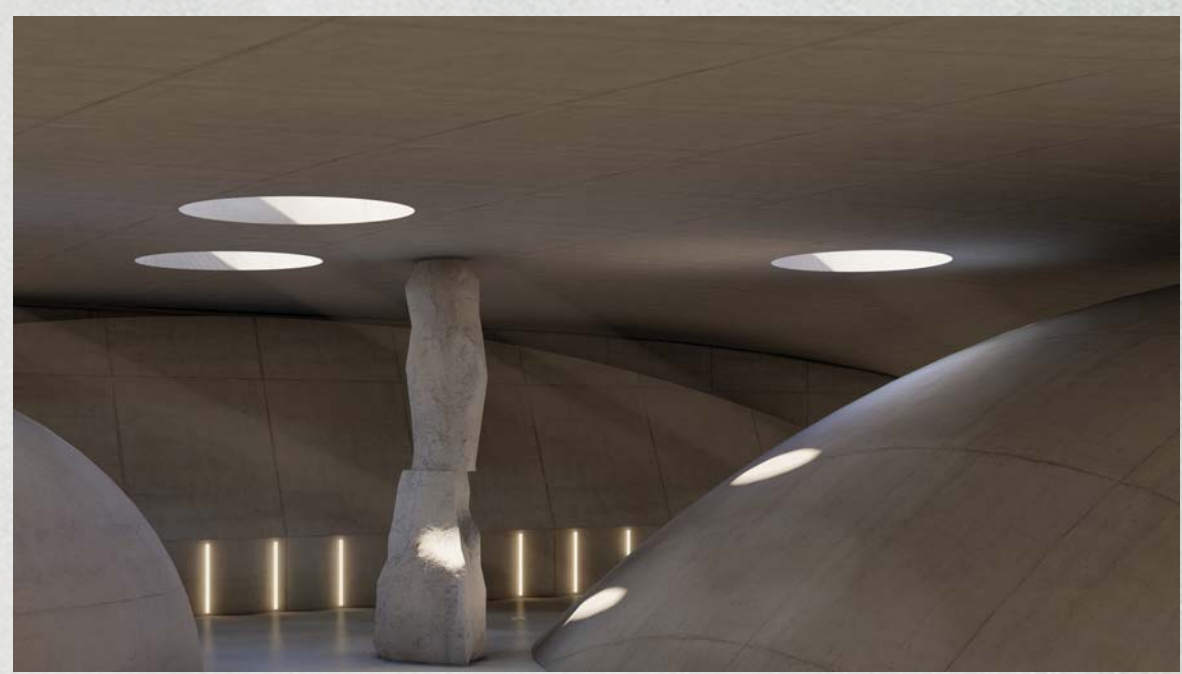
DIAGRAM: STRUCTURE



A MONUMENT TO THE SUBLIME

THE METAPHYSICAL EXPERIENCE





ELEMENTS CREATING SPACE



THE LIBRARY AS AN OPEN YET INTIMATE SPACE



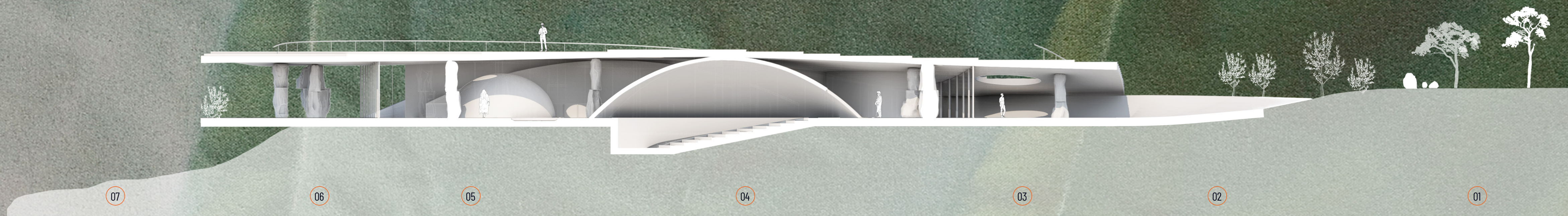
OPENING UP TO THE LANDSCAPE



THE ROOF CREATES A REFRESHING SHADING SPACE

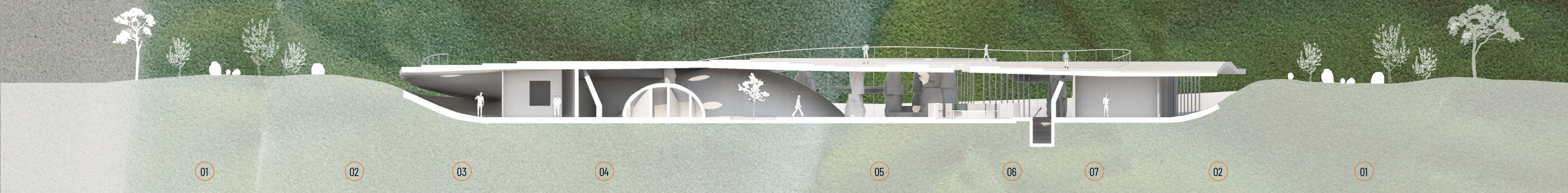


ROOF AND FLOOR OPEN UP TO LET LIGHT IN



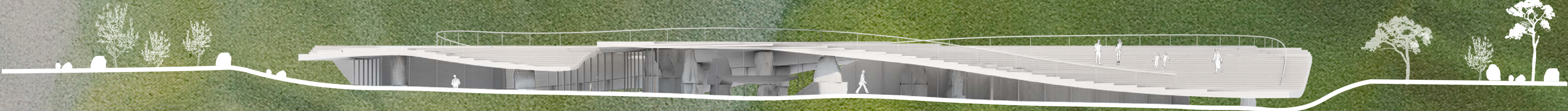
TRANSVERSAL SECTION

- 01 INTERNAL ROAD
- 02 PLAZA
- 03 WATER GARDEN
- 04 LOUNGE
- 05 AUDITORIUM
- 06 OPEN WORKING SPACE
- 07 ROCK GARDEN
- 08 THE CANYON



LONGITUDINAL SECTION

- 01 EXISTING TOPOGRAPHY
- 02 SHADED OUTDOOR
- 03 STUDIOS
- 04 CAFETERIA
- 05 OPEN WORKING SPACE
- 06 ACCESS TO BASEMENT
- 07 CLASSROOMS



ELEVATION FACING THE CANYON



ELEVATION FACING THE PLAZA



COLUMNS BECOME A FORM OF ART MANIFESTATION IN THE SPACE



LIGHT EXPANDS THE SPACE AND CREATES A RHYTHM



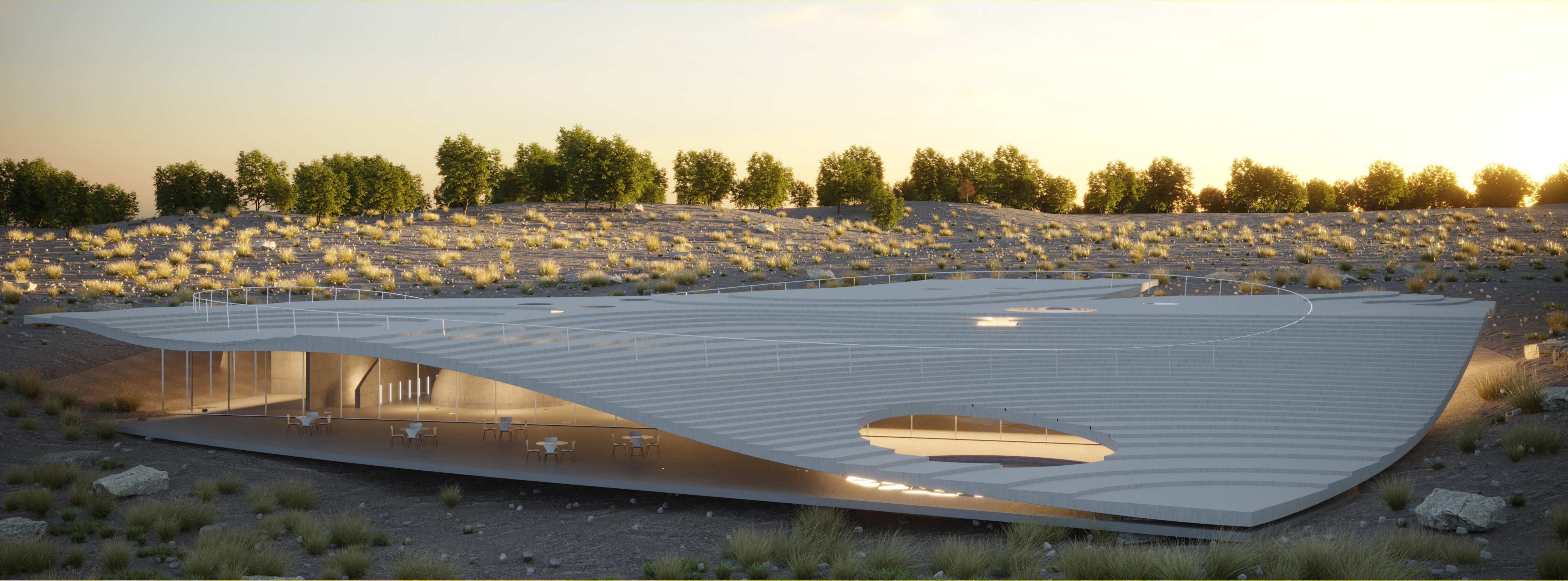
WALLS AND DOMES SEEM TO GENTLY HOLD THE ROOF



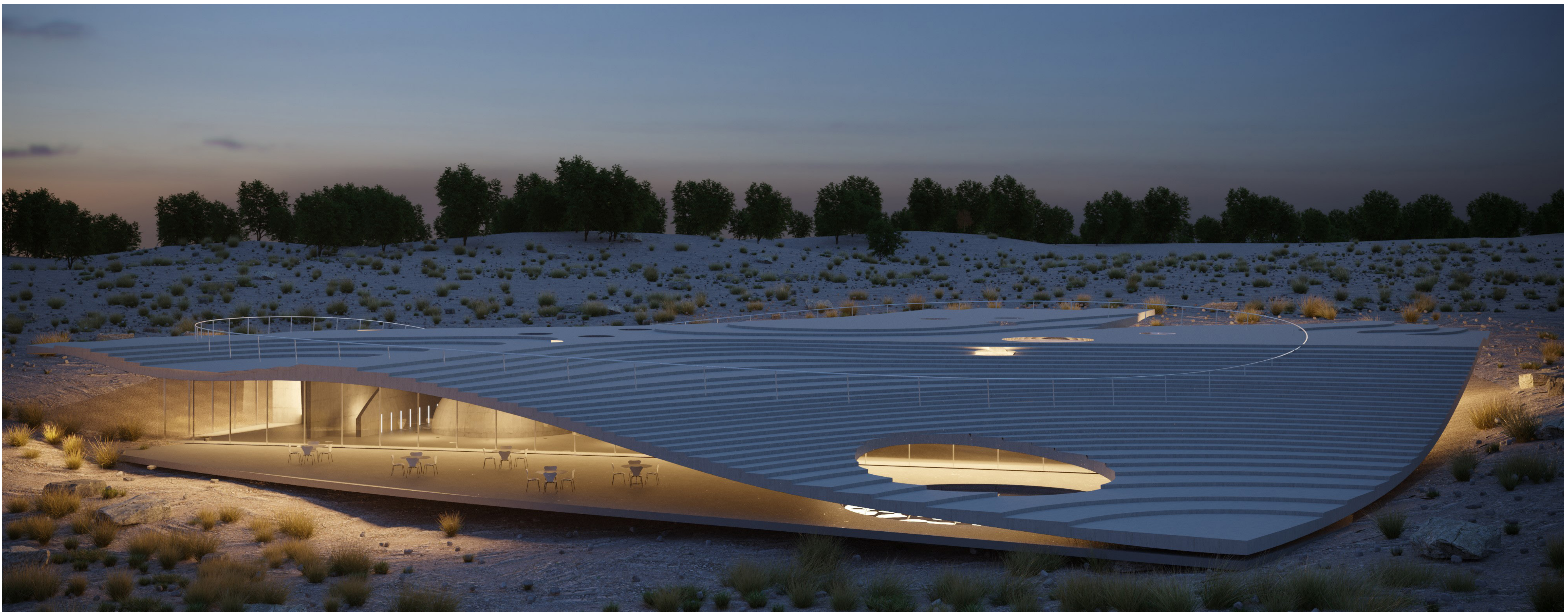
WALLS AND DOMES SEEM TO GENTLY HOLD THE ROOF



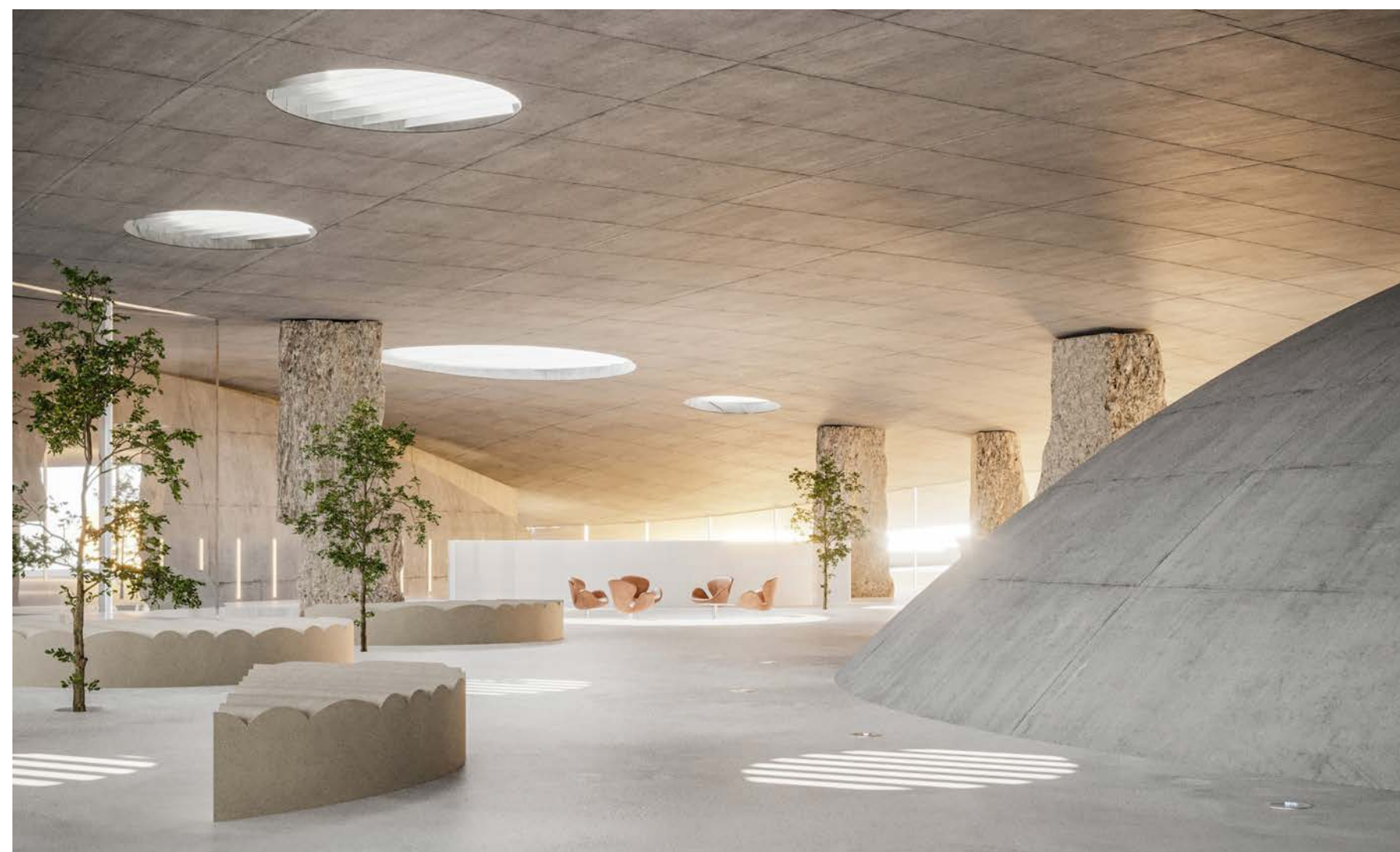
LIGHT WELLS CREATING A UNIVERSE OF ABSTRACTION



THE BUILDING IS DESIGNED AS A PARTLY UNDERGROUND ROOM WITH THE SCALE OF A PUBLIC PARK.



BUILT IN THE PRESENT BUT NOT FOR IT, ARCHITECTURE SHOULD BE OUT OF ITS TIME



IN ITS TOTALITY, THE BUILDING CREATES A UNIVERSE WITHIN ITSELF

UPON APPROACHING, THE BUILDING TRANSFORMS INTO A SPECIAL EXPERIENCE THAT CONSTANTLY OSCILLATES BETWEEN THE EMOTIONAL AND THE INTELLECTUAL.

