

# COAF SMART CAMPUS ARMAVIR

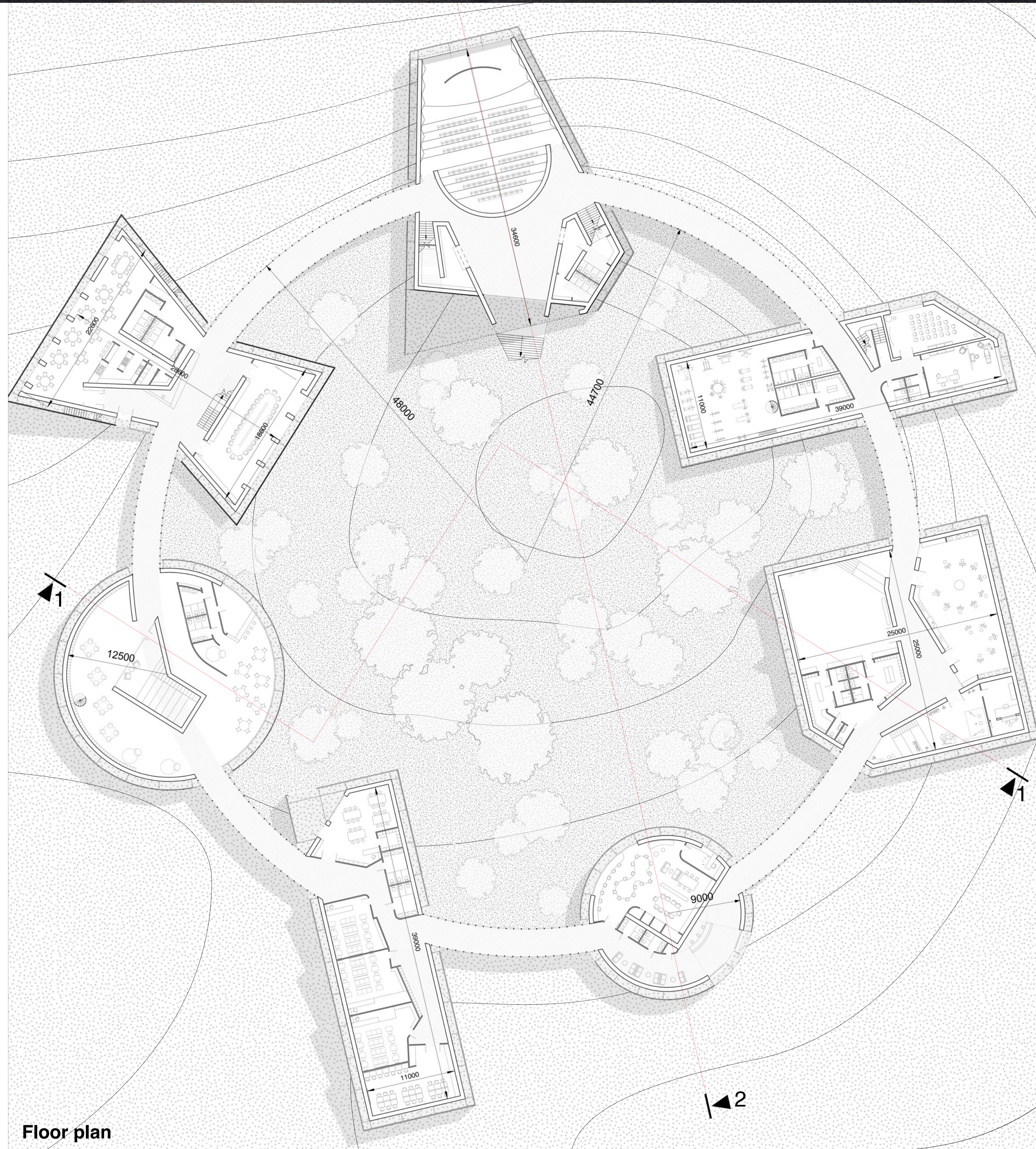
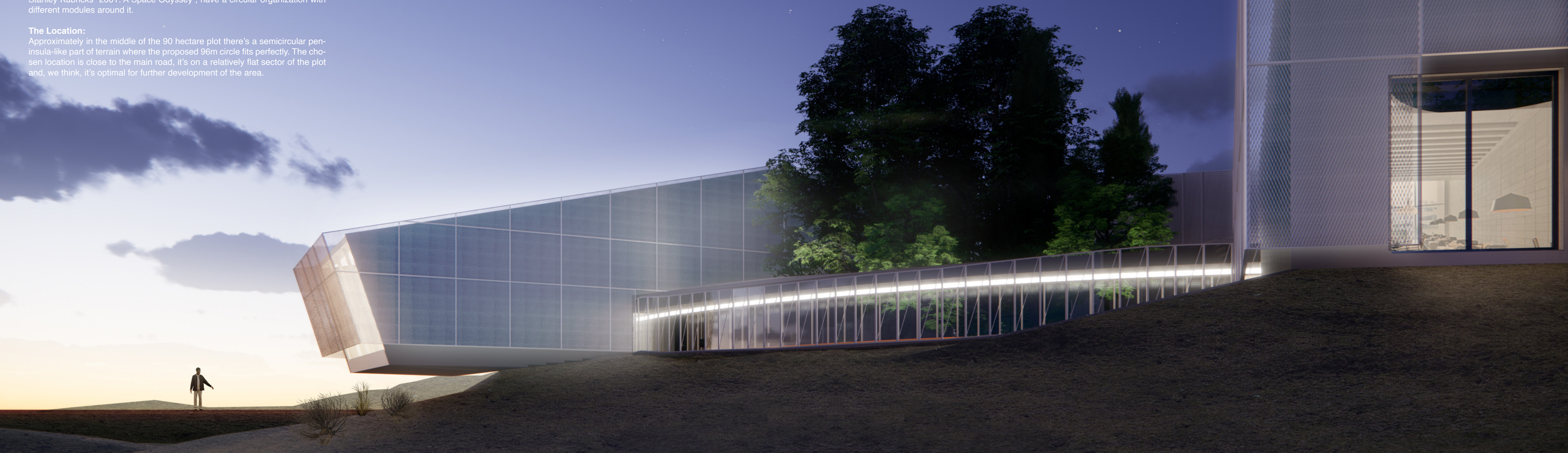
## From Prehistoric Settlements To The Space Station

**The Challenge:**  
How to design a building (or buildings) in the "middle of nowhere", in a rural, near desolate, valley with a pretty harsh climate throughout the year? How to deal with the absence of urban context and any signs of civilization for many hectares around? Which factors should impact the morphology of the project? Those were the questions we've tried to address during the design process.

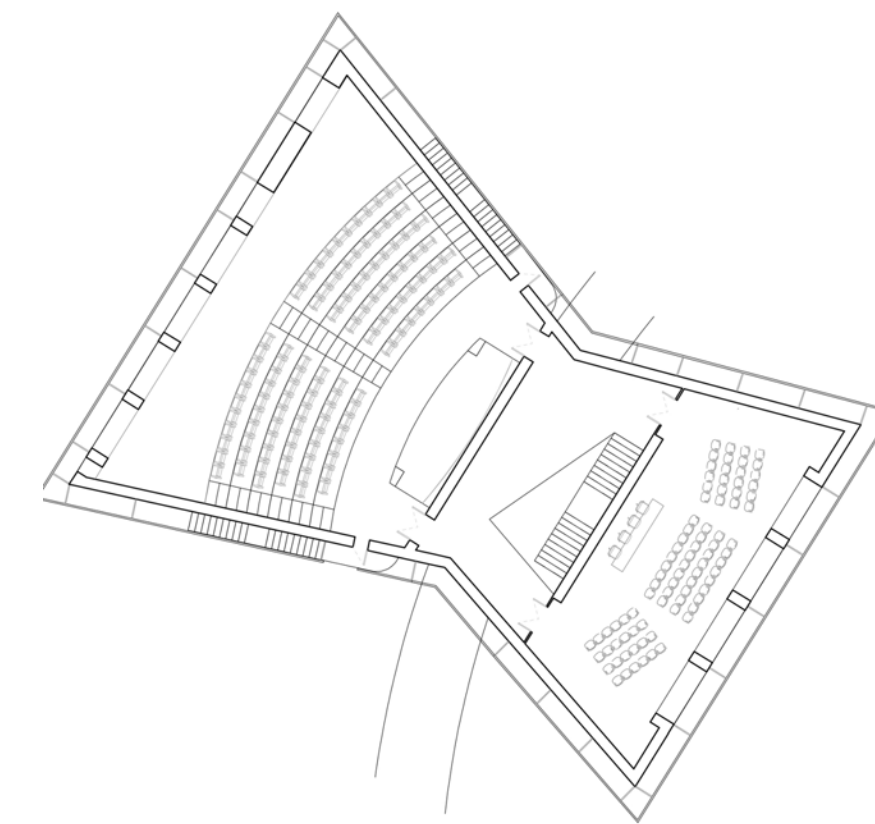
**The Concept:**  
This might sound ridiculous but prehistoric settlements and the international space station have a lot of similarities from the "architectural" point of view. Neither in the prehistoric world, nor in the open space there is no architectural or urban context that could impact the form. Almost all the prehistoric settlements were organized in the same manner - modular units of different size and function were built around the circular courtyard (the public space) and were connected to each other with a wall or a corridor, giving access, for example, from the living hut to the barn. That was the most organic and efficient planning our ancestors could come up with. Actually the space station is organized in the same way. It consists of different modules, each of them carries a different function and they're all connected with a corridor. A lot of space station designs, fictional ones as well, like in Stanley Kubrick's "2001: A Space Odyssey", have a circular organization with different modules around it.

**The Location:**  
Approximately in the middle of the 90 hectare plot there's a semicircular peninsula-like part of terrain where the proposed 96m circle fits perfectly. The chosen location is close to the main road, it's on a relatively flat sector of the plot and, we think, it's optimal for further development of the area.

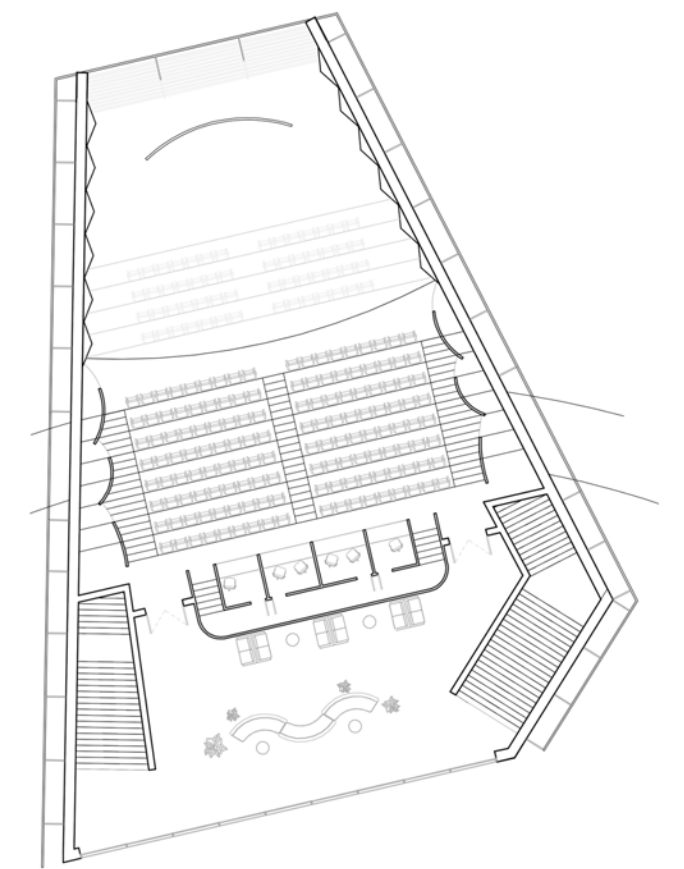
**The Project:**  
We envisioned the new COAF Smart Center not as a lone standing building but rather as a system of independent modules each containing a certain function and type of activity. Instead of designing a building we propose a mini campus. It is organized around the public space which represents a small oasis in the middle of desolate landscape. The circular corridor "sews" all the modules together creating an easy circulation scheme which also gives an interesting experience of walking through different parts of the building and while you're in between, in the corridor you see two completely different scenes on your left and on your right. On one side is the magnificent and harsh view of the outside and on the other side is the inner oasis.  
The circular corridor follows the curvature of the terrain creating mild ramps inside and referencing the Smart Center in Debet. All the modules attached to it are formed freshly according to each function. There's no hierarchy of the forms, they're equal in their difference.  
Unlike the Debet's Smart Center's poetic appearance, which is perfect in the heaven-like landscape of Lori province, the proposed volumes are sturdy in their appearance to "survive" in the harsh landscape of Armar. Modules are designed with a double skin made of expanded metal mesh which serves as a sun protection system and gives a light and airy appeal to the project.



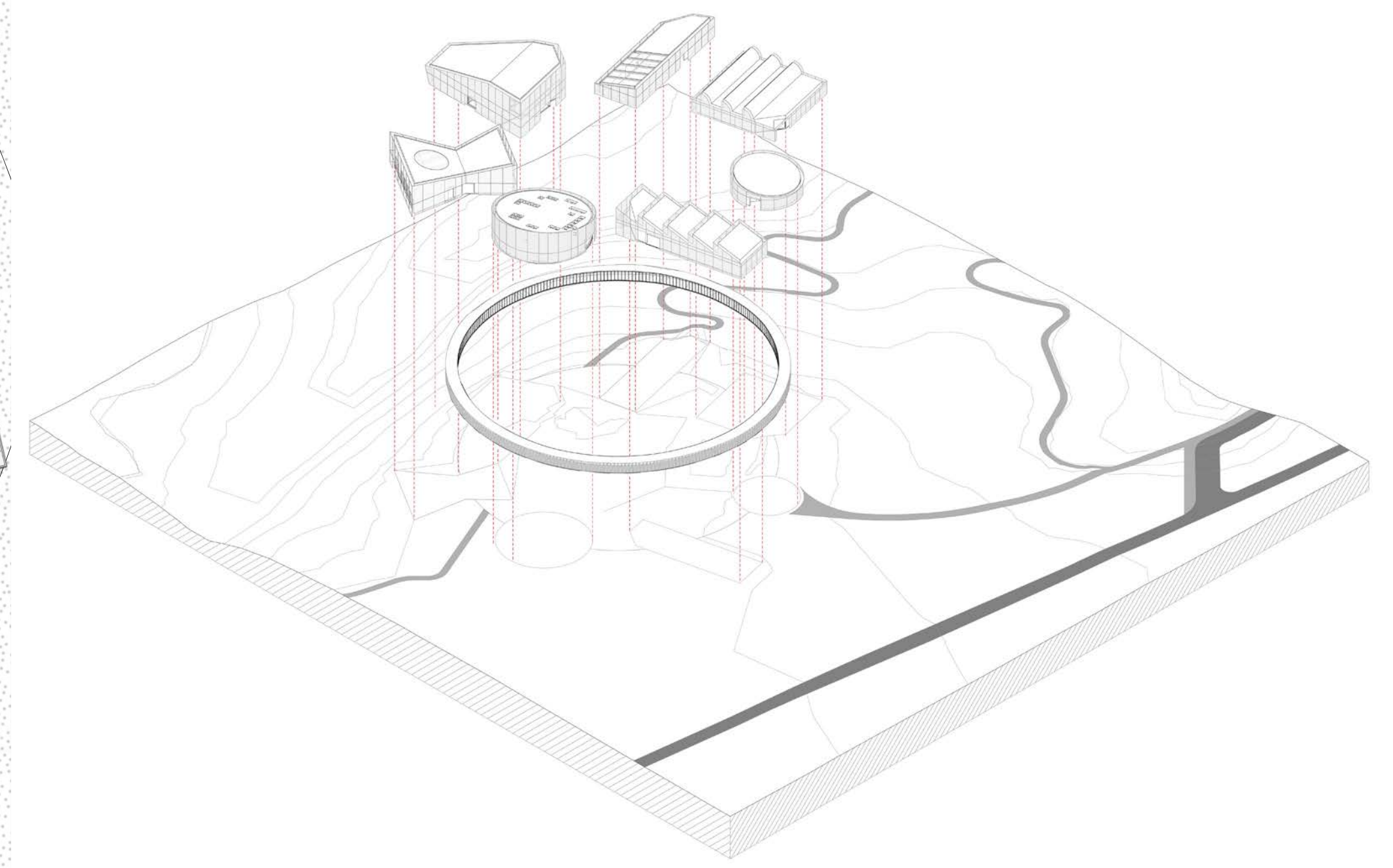
Floor plan



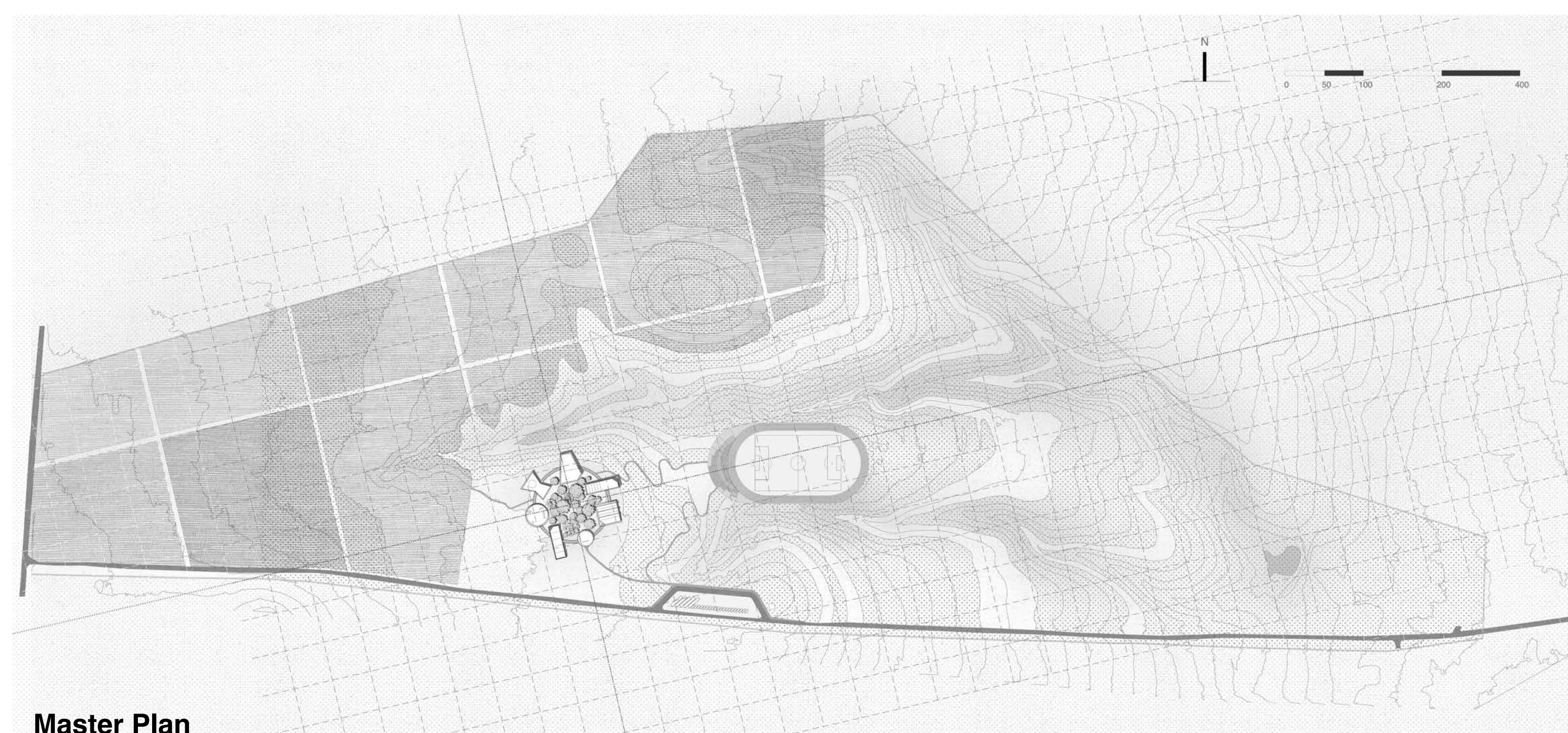
Restaurant / conference hall / corporative retreats, second floor plan



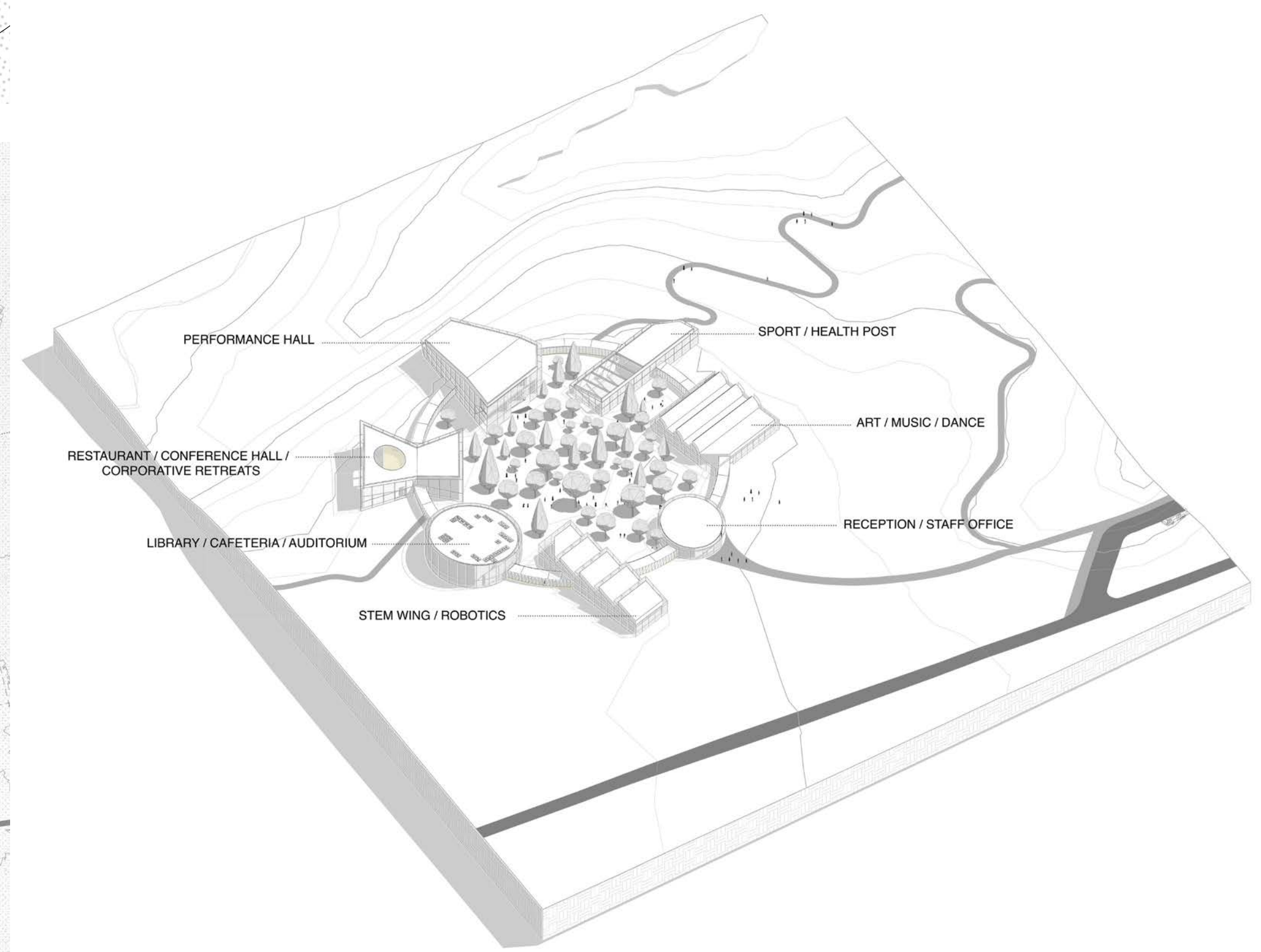
Performance hall, second floor plan



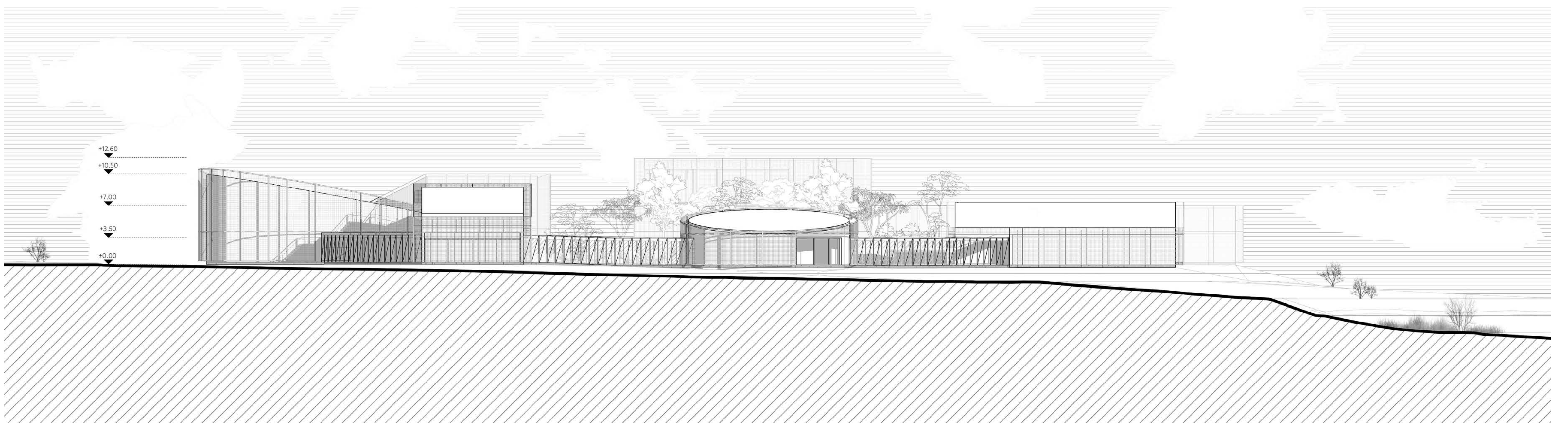
"Approximately in the middle of the 90 hectare plot there's a semicircular peninsula-like part of terrain where the proposed 96m circle fits perfectly. The chosen location is close to the main road, it's on a relatively flat sector of the plot and, we think, it's optimal for further development of the area."



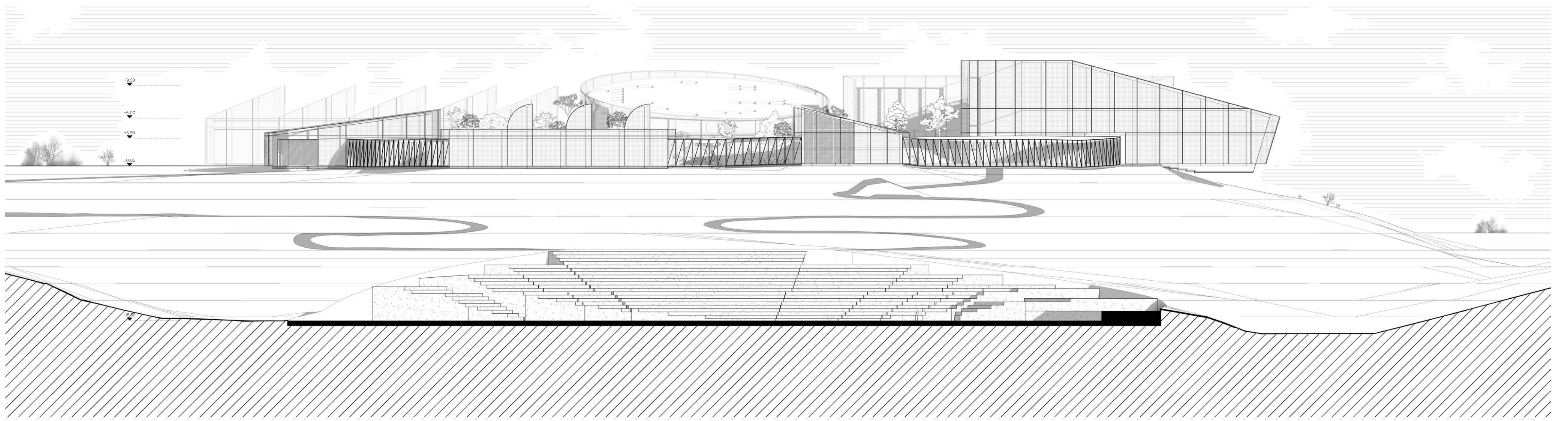
Master Plan



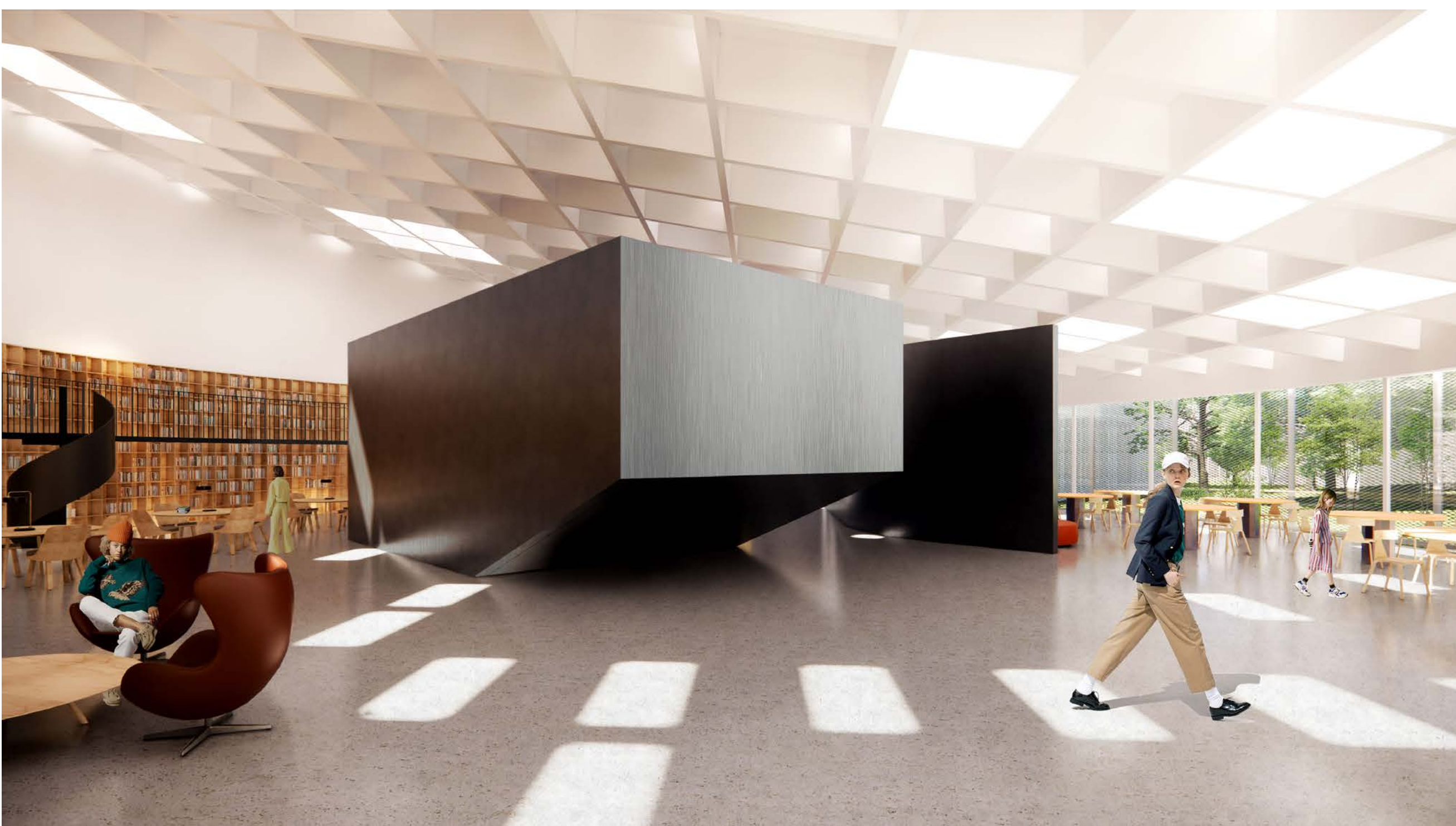




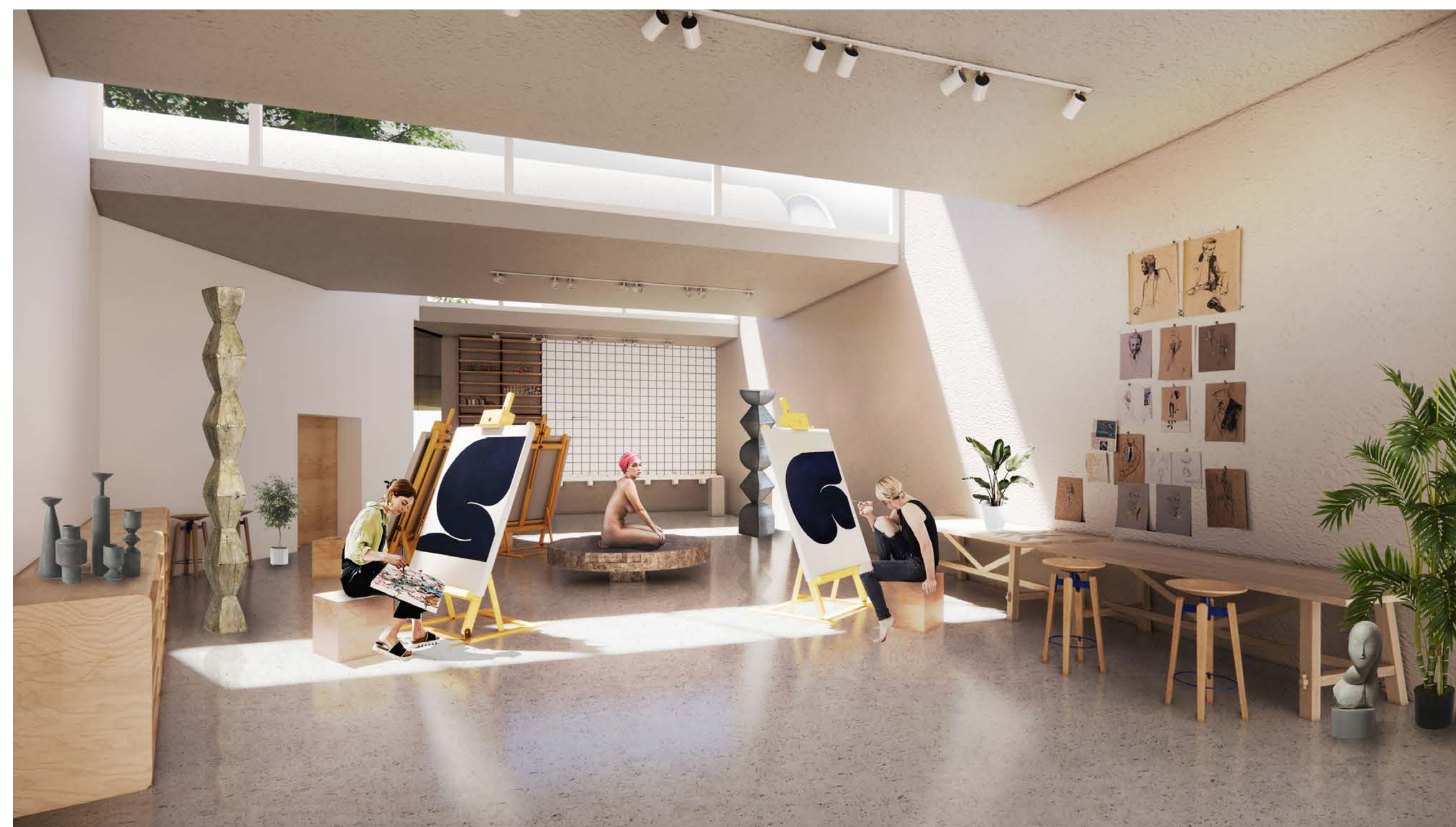
South Elevation S 1:300



East Elevation S 1:300



Library interior



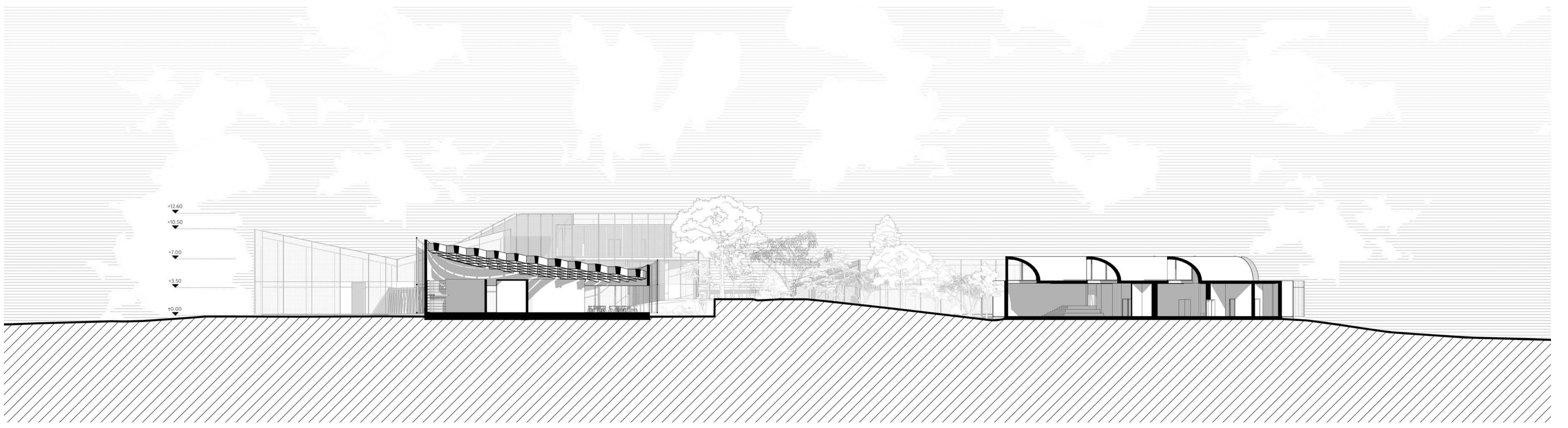
Art studio interior

*"Unlike the Debet's Smart Center's poetic appearance, which is perfect in the heaven-like landscape of Lori province, the proposed volumes are sturdy in their appearance to "survive" in the harsh landscape of Arnavir. Modules are designed with a double skin made of expanded metal mesh which serves as a sun protection system and gives a light and airy appeal to the project."*

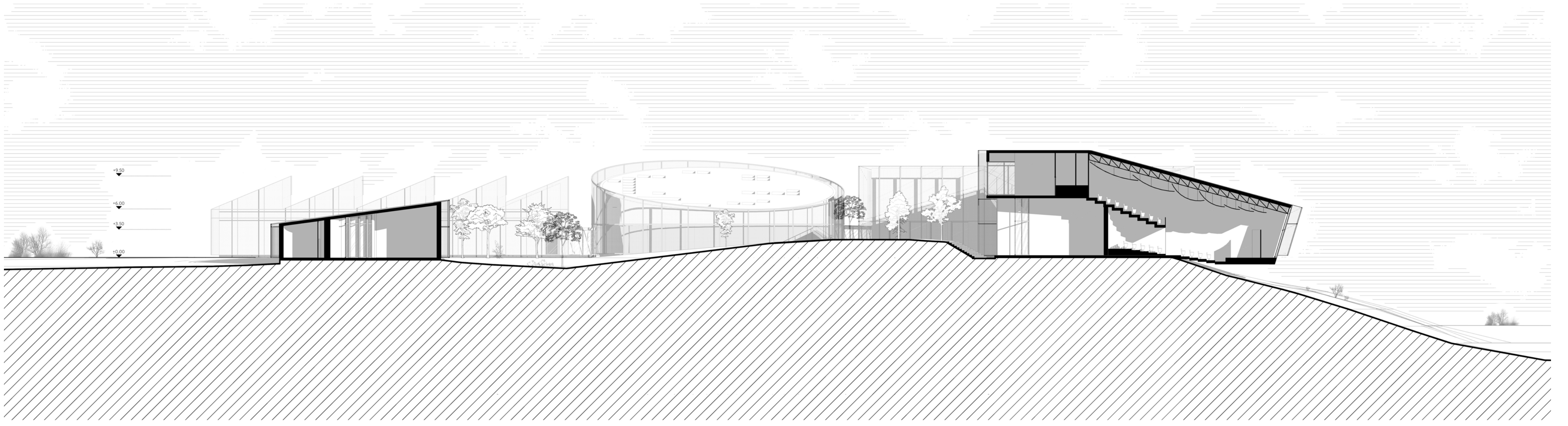


View from west

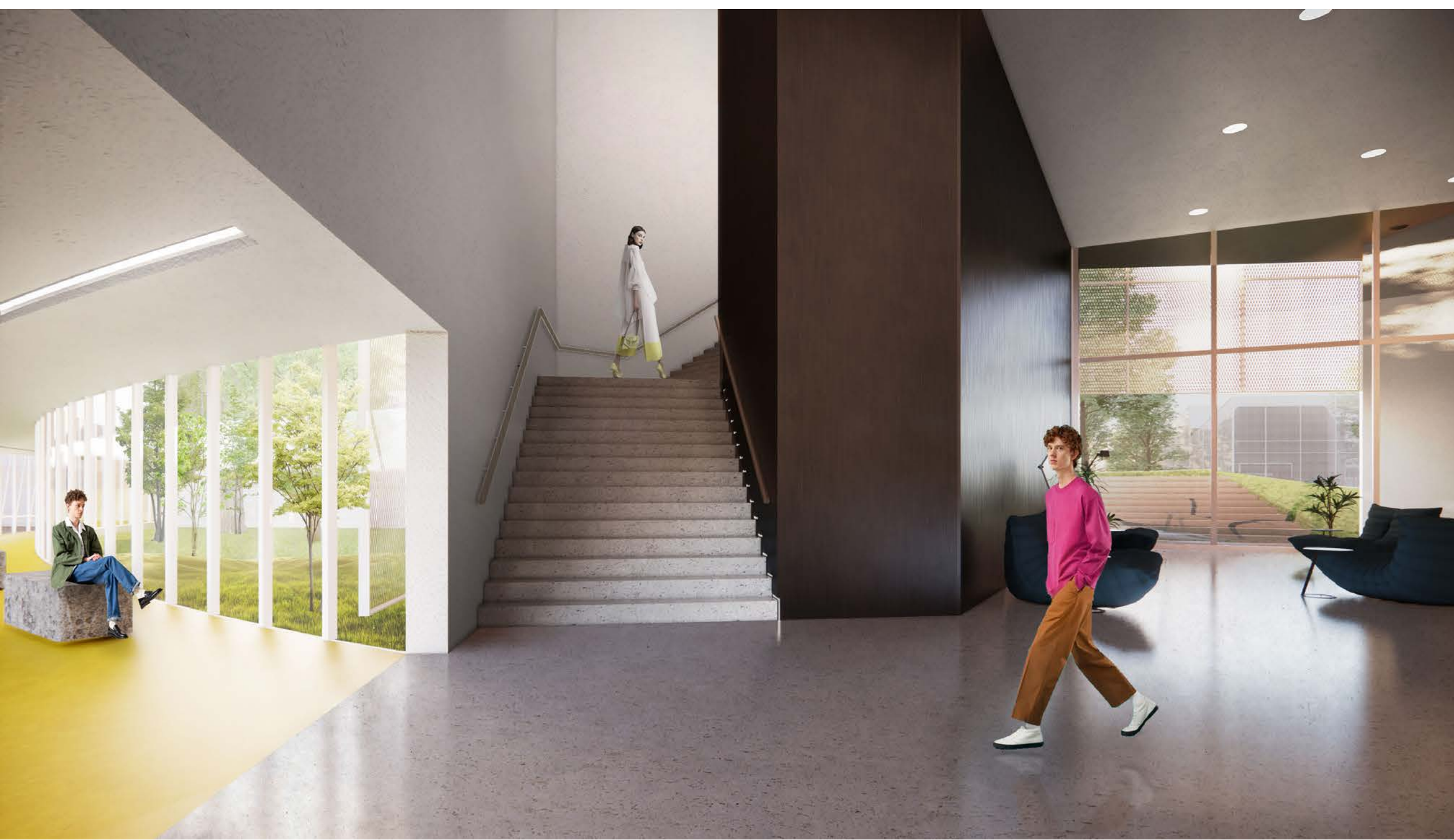




Section 1-1 S 1:300



Section 2-2 S 1:300



Performance hall lobby interior



View from north-west

*"Instead of designing a building we propose a mini campus. It is organized around the public space which represents a small oasis in the middle of deserts landscape."*



View from courtyard towards north-west