

The Bridge

The bridge is a connection



With nature

Both Campus and Event Centre partly merge into the ground, use the plot landscape with care and enable the best views possible. The event hall is pointed directly to Ararat and has a possibility to open frame windows to enjoy the view during the event run. The restaurant on top has both Aragats and Ararat terraces so customers may choose.

Campus is oriented strictly on North-South axis so STEM groups get the morning sun while Programmatic students are able to enjoy sunsets while studying. Both blocks are equipped with polycarbonate skylights that scatter light to provide pleasant ambient environment.



With people

The bridge is a connection in both physical and symbolic ways of two landmarks, past and future, childhood and adult life. We tried to show how lives of different people could be united with a bridge. Kids and teachers, students and mentors, sportsmen and trainers, performers and their audience - all are connected together, and there is always a place for everyone to join.

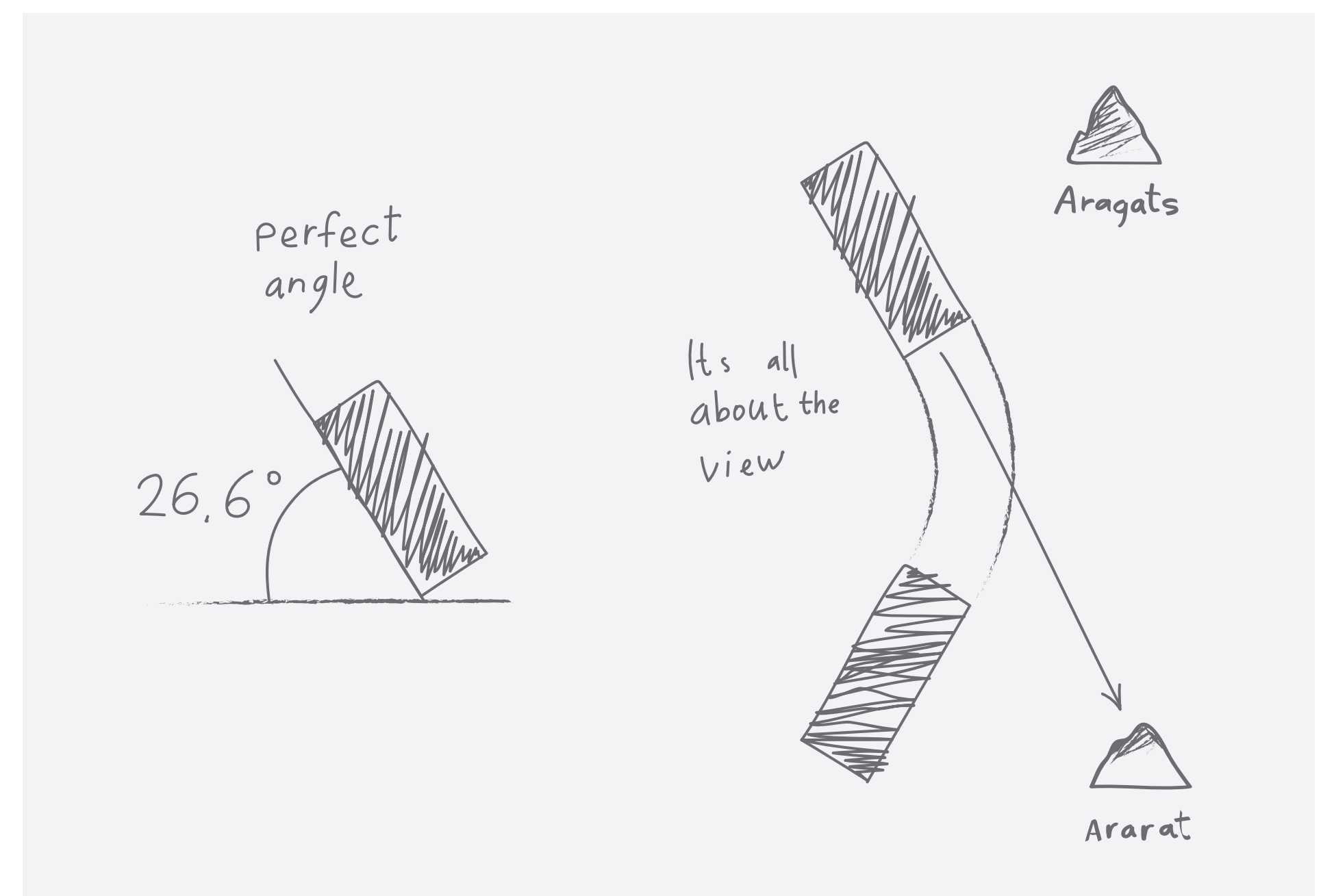
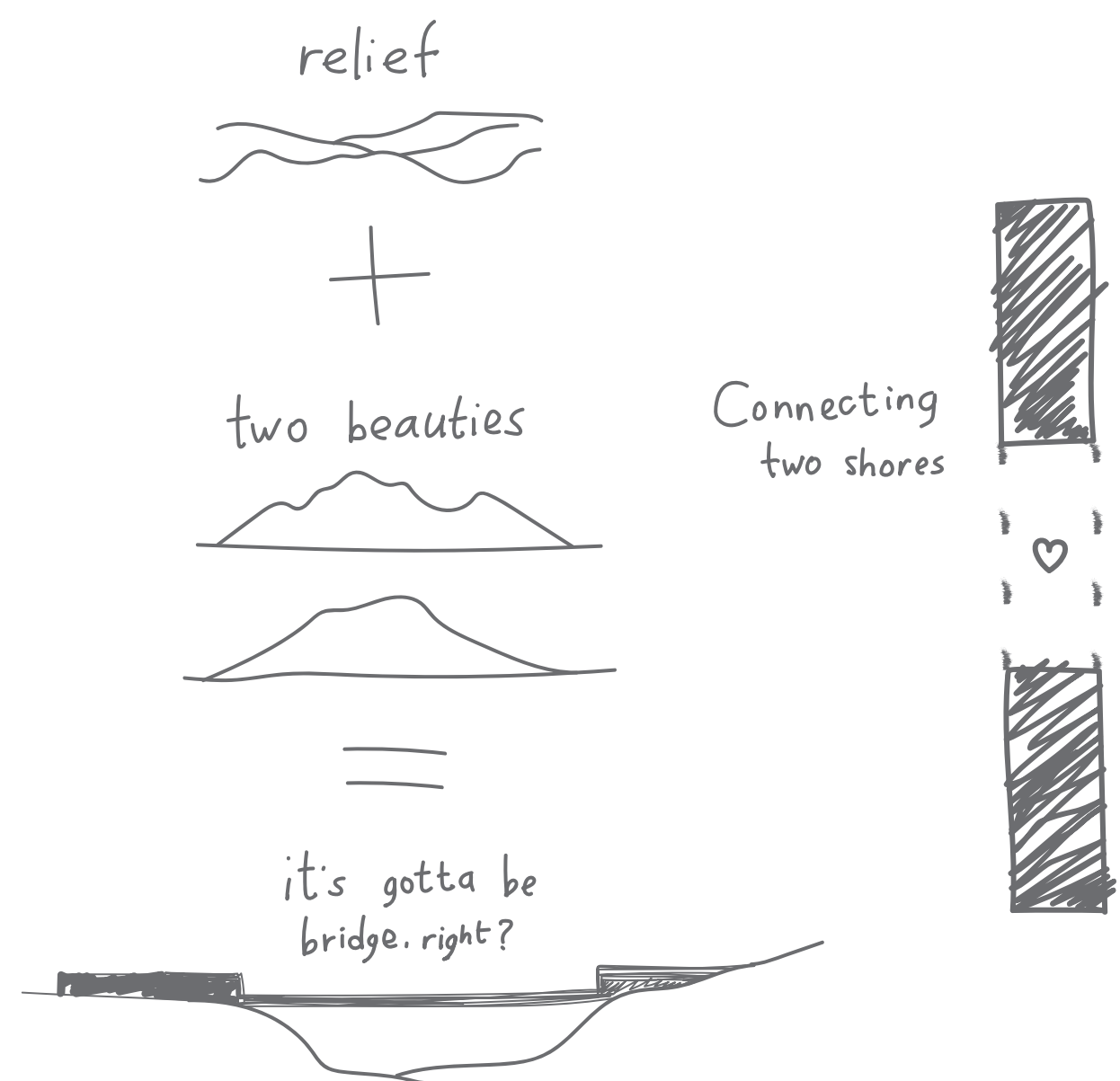
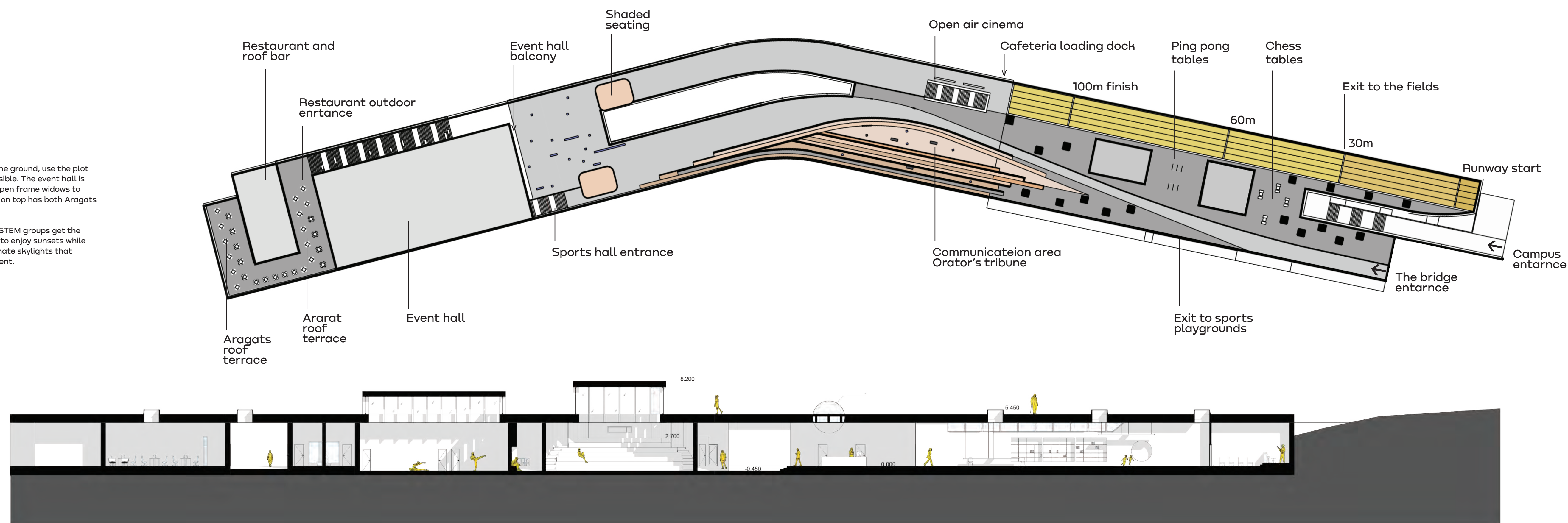
Simple and robust design of the carrying structures helps to drive more attention to the visual, tactile and functional interaction between the building and its users: flexible and transformable spaces are designed to adopt.

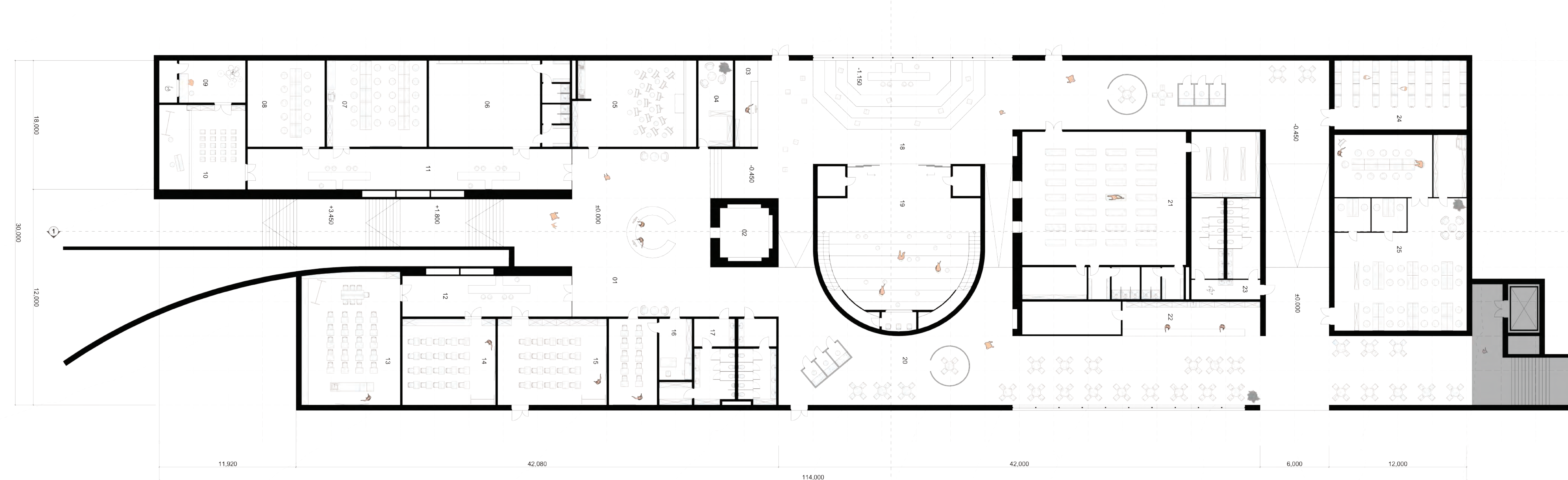
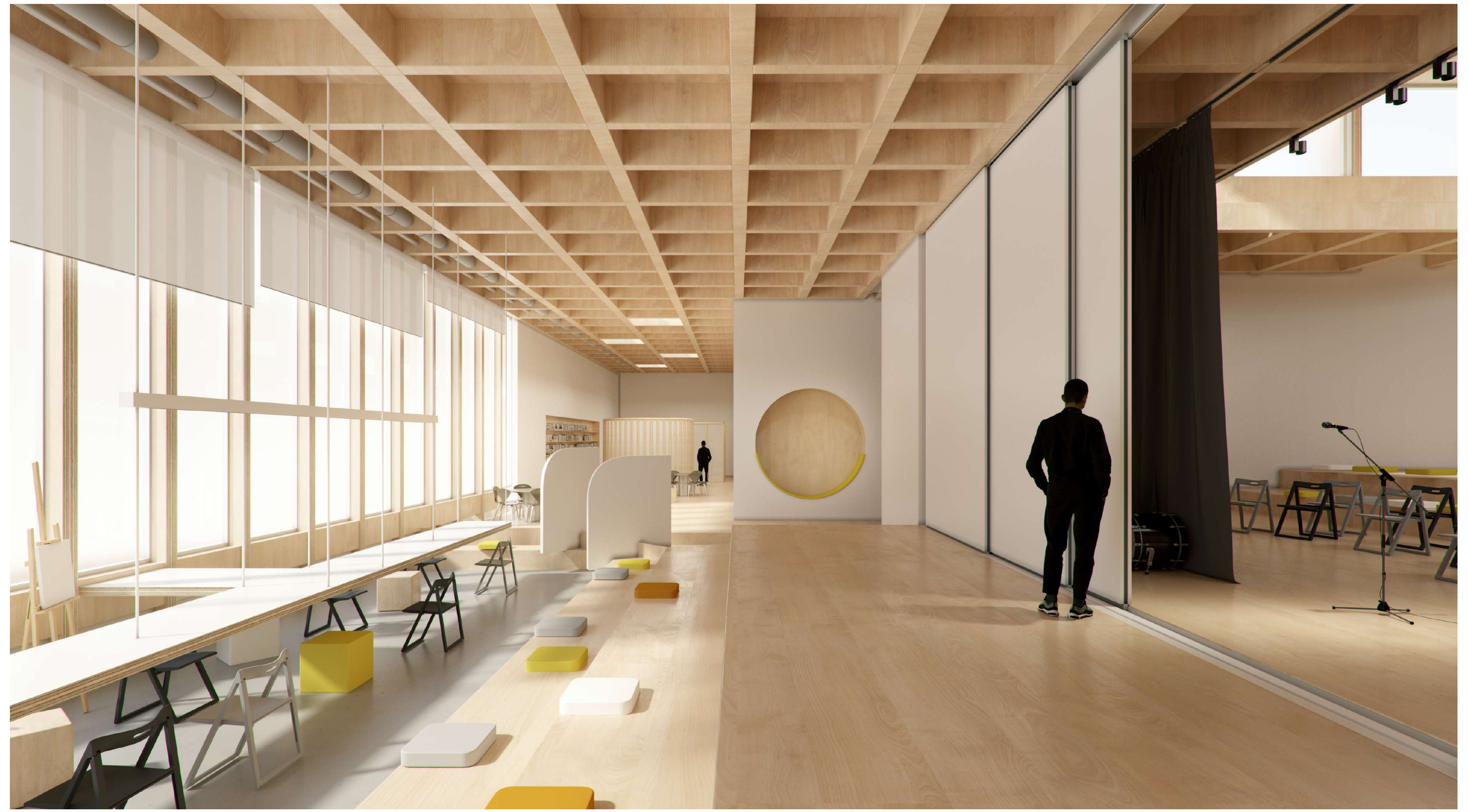
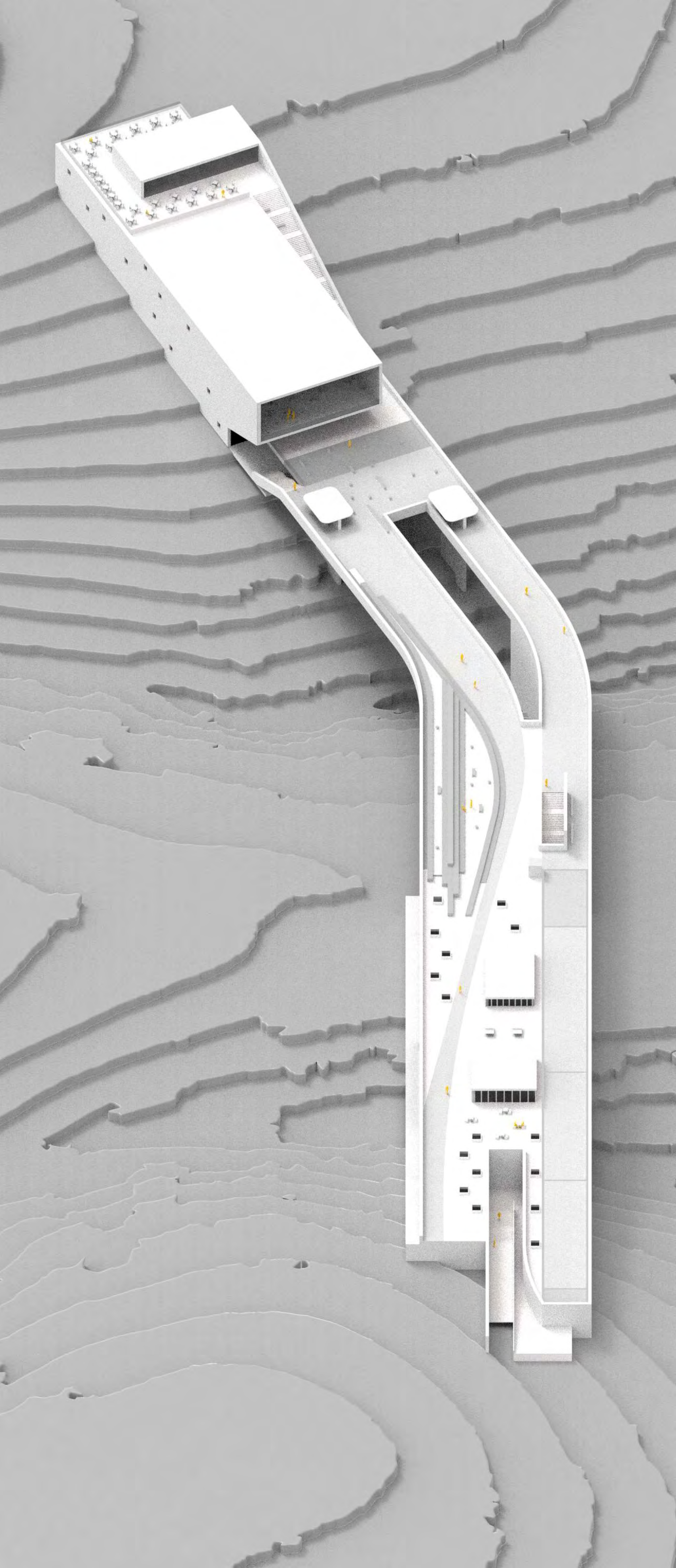


With time

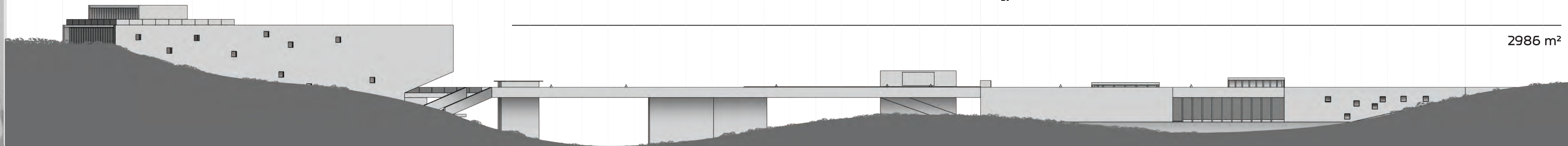
The bridge will illustrate the year-to-year development of the project, including more functions, possibilities and values to its visitors. Its location on site and communication possibilities will help to shape future success, supporting different activities, ideas and collaborations. For some options please take a look at the masterplan. One bridge, a lot of ways to cross.

As construction materials we propose to use combination of concrete and cross laminated timber. CLT brings natural touch to the interiors, has impressive aesthetic and acoustic qualities. Prefabricated methods help not only improve construction quality speed: material remaining after production can be re-used for the furniture fixtures and reduce waste dramatically. A small step into better future.





01 Reception Area	210	05 Dance Studio	92	11 Hall	100	16 Health Post	48	21 Sports Hall	257
02 Cultural Corner	19	07 Digital Design Studio	65	12 Hall	52	17 Restroom	60	22 Kitchen/Bar	357
03 Library Reception	15	08 Robotic Lab	50	13 Chemistry	99	18 Library	515	23 Restroom	53
04 Staff Room	23	09 Record Studio	28	14 Geography	60	19 Lecture Hall	185	24 Book Storage	70
05 Art Studio	80	10 Music	55	15 Biology	70	20 Hall	204	25 Staff Office	216

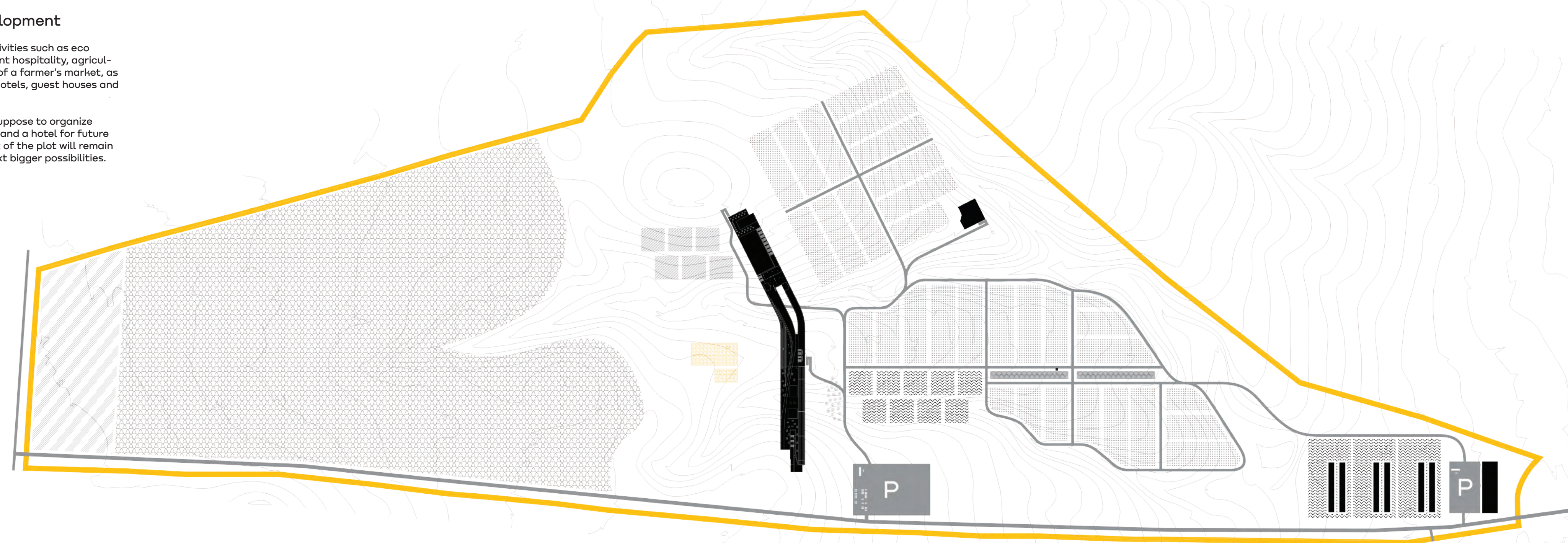




Territory Development

can include many activities such as eco-tourism and permanent hospitality, agriculture and installation of a farmer's market, as well as restaurants, hotels, guest houses and much more.

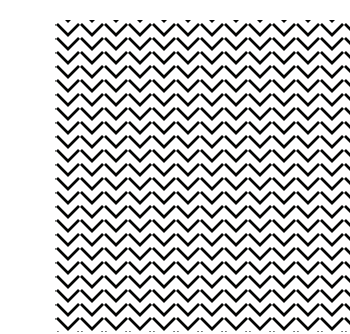
At the first step we suppose to organize wineries, greenhouses and a hotel for future visitors. Western part of the plot will remain untouched for the next bigger possibilities.



Grape



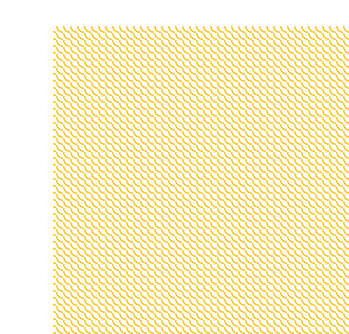
Raspberry



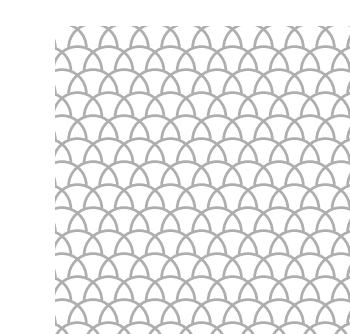
Raspberry



Farmers market



Sport playground



Commercial farming



Hotel



Garage



Reception



Greenhouse



Parking