

Situation pictures



Apellation

1. Complex	5. Underground-parking	9. River, reservoir
2. Main road	6. Amphitheater	10. Path
3. Road	7. Sport fields	11. Arable land
4. Open-air parking	8. Park	12. Guard post

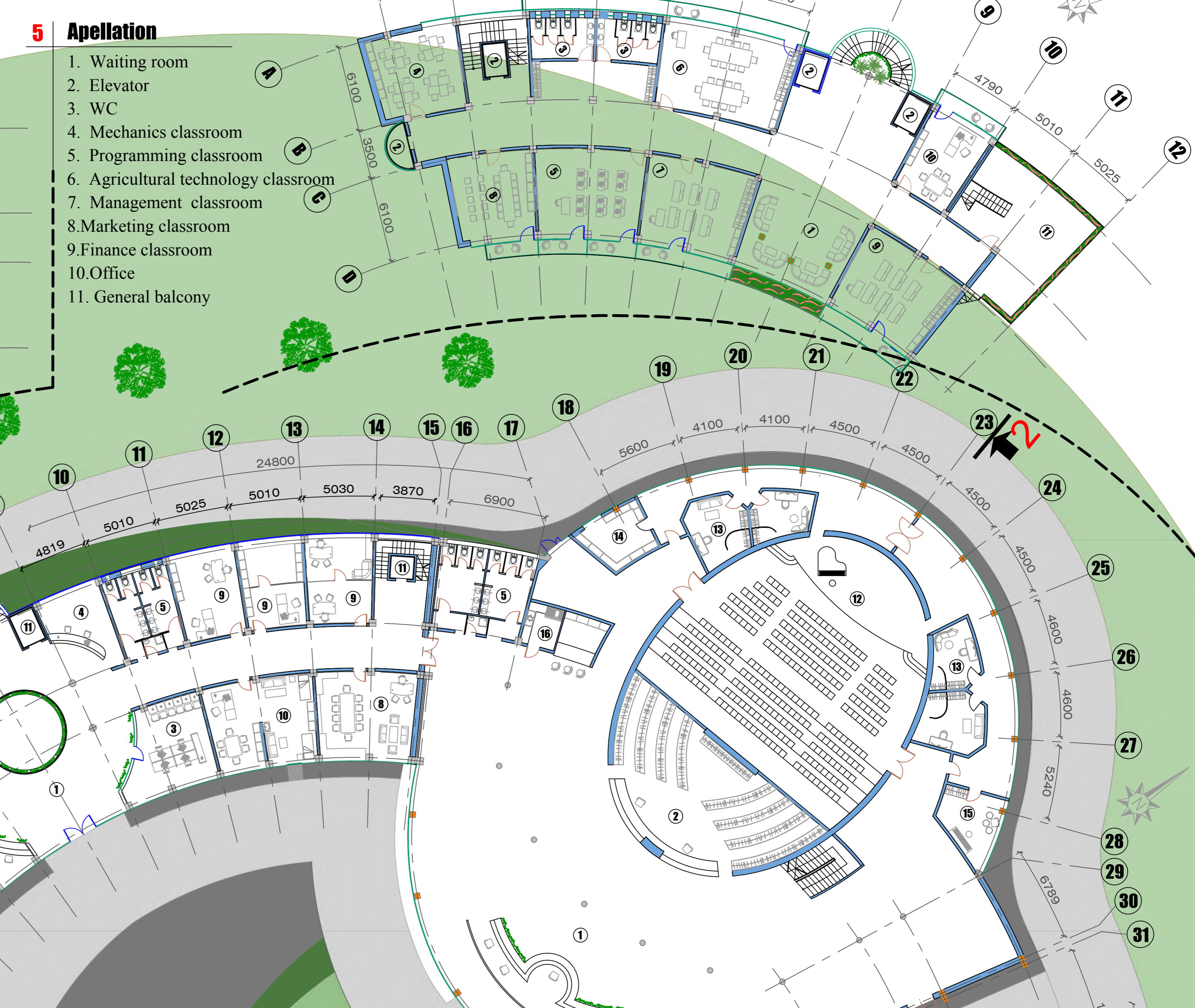
6-th floor plan scale 1:200



6 Apellation

1. Waiting room
2. Elevator
3. WC
4. Robotics classroom
5. Office
6. General balcony

5-th floor plan scale 1:200



5 Apellation

1. Waiting room
2. Elevator
3. WC
4. Mechanics classroom
5. Programming classroom
6. Agricultural technology classroom
7. Management classroom
8. Marketing classroom
9. Finance classroom
10. Office
11. General balcony

8 Apellation

1. Entrance hall
2. Dressing room
3. Shower
4. Elevator
5. Gym
6. Coach room
7. Pool
8. Bar
9. General balcony

8-th floor plan scale 1:200



1-st floor plan scale 1:200

4 Apellation

1. Waitingroom
2. Elavator
3. Dressing room
4. Dance room
5. Yoga room
6. Fitness room
7. Gym
8. General balcony

1 Apellation

1. Entrance hall
2. Dressing room
3. Internet room
4. Information
5. We
6. Boss
7. Accounting
8. Administrative room
9. Working room
10. Medical point
11. Elavator
12. Grand hall (250-300)
13. Backstage room
14. Stage storage
15. Music room
16. Bar, Kitchen
17. 1 bedroom suite
18. 2 bedroom suite
19. 4 bedroom suite
20. Open-air amphitheater

4-th floor plan scale 1:200

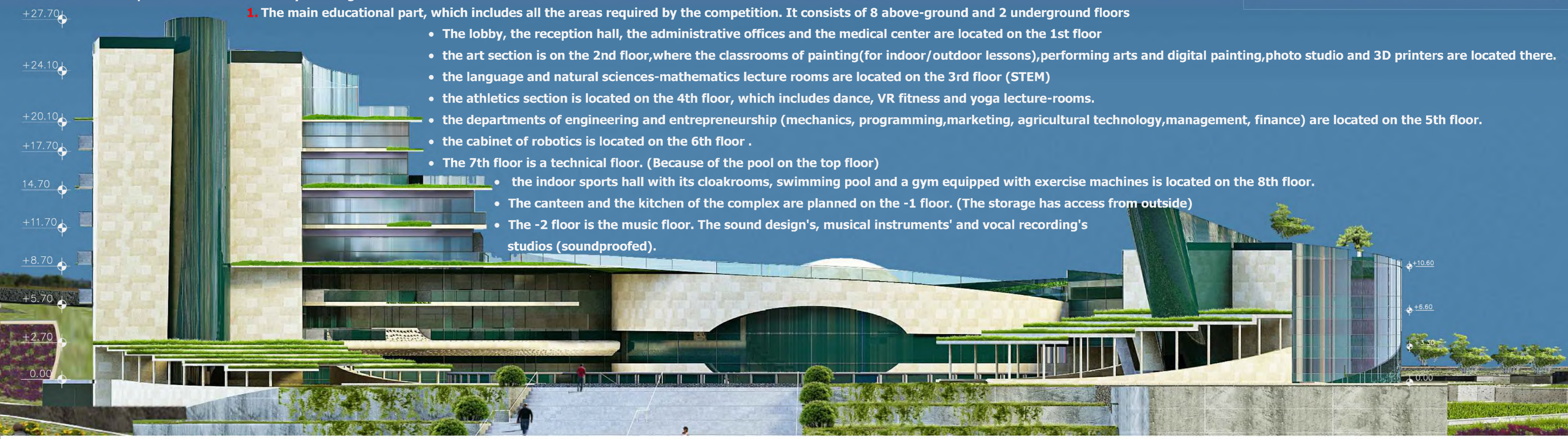
▲ Outlined Ararat mount

The symmetry of golden intersection is considered as a basis of the main plan of the project - the complex resembles Mount Ararat in its volume and when looking at the building- more precisely towards Mount Ararat, it seems like it is being outlined.

19921017

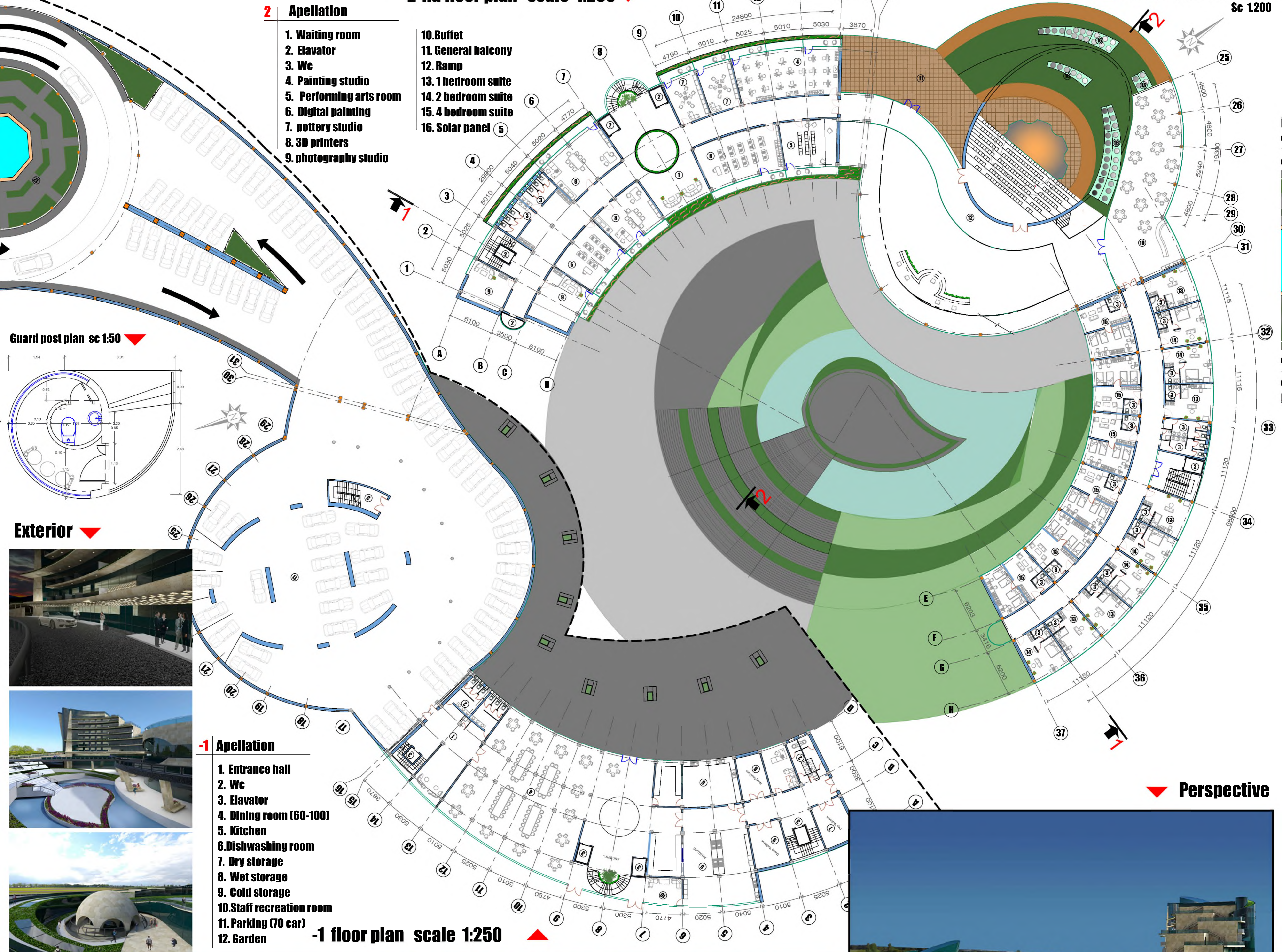
The complex has 3 main subsidiary buildings:

- The main educational part, which includes all the areas required by the competition. It consists of 8 above-ground and 2 underground floors
 - The lobby, the reception hall, the administrative offices and the medical center are located on the 1st floor
 - the art section is on the 2nd floor, where the classrooms of painting (for indoor/outdoor lessons), performing arts and digital painting, photo studio and 3D printers are located there.
 - the language and natural sciences-mathematics lecture rooms are located on the 3rd floor (STEM)
 - the athletics section is located on the 4th floor, which includes dance, VR fitness and yoga lecture-rooms.
 - the departments of engineering and entrepreneurship (mechanics, programming, marketing, agricultural technology, management, finance) are located on the 5th floor.
 - the cabinet of robotics is located on the 6th floor.
 - The 7th floor is a technical floor. (Because of the pool on the top floor)
 - the indoor sports hall with its cloakrooms, swimming pool and a gym equipped with exercise machines is located on the 8th floor.
 - The canteen and the kitchen of the complex are planned on the -1 floor. (The storage has access from outside)
 - The -2 floor is the music floor. The sound design's, musical instruments' and vocal recording's studios (soundproofed).



2-nd floor plan scale 1:250

South-east elevation Sc 1:200

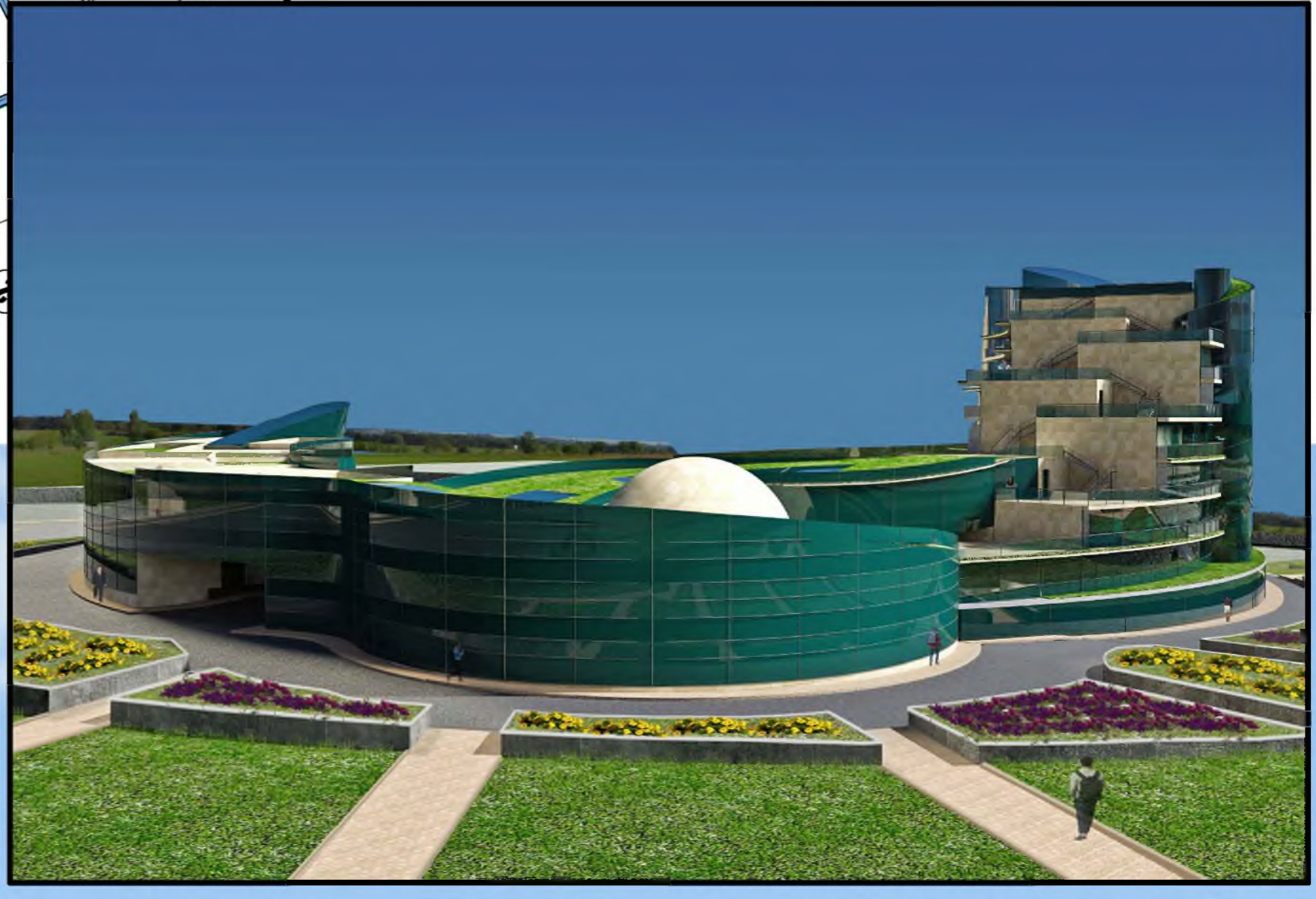


Guard post plan sc 1:50

Exterior



Perspective



24.40
24.10
20.40
20.10
18.00
17.70
15.00
14.70
12.00
11.70
9.00
8.70
6.00
5.70
3.00
2.70
0.00



Section 1-1 Sc 1:200

- The event hall- designed for 250-300 people, has a dressing room, a buffet, backstage rooms and a storage .
- The 3rd floor is an open-air alley. It is also possible to organize an event there having the opportunity to enjoy a wonderful view. From place to place solar panels are installed.
- The -1 and -2 floor are closed parking floors designed for 70 cars each

3. Hotel(accommodation) and library, both for the guests and staff (teachers...) is located there

- The 1st and 2nd floors are dormitories (with 1-2-4 rooms)
- The 3rd floor is a library with a reception, electronic search panels, an archive and reading rooms.

The subsidiary buildings are connected to each other by floors. Outside the building there is a place to sit like an amphitheater, which can serve as an open-air stage in case of its necessity. In the territory of the complex there are also outdoor sports fields, a parking lot designed for 150 cars, a reservoir, arable lands, gardens, a guard post is also designed at the entrance.

All the areas and floors of the complex can be reduced or added in case of its necessity and the master plan is made and laid out (drawn) in such a way that even in case of its further expansion it will not lose its exterior and will continue to maintain its unique stylistic solution.

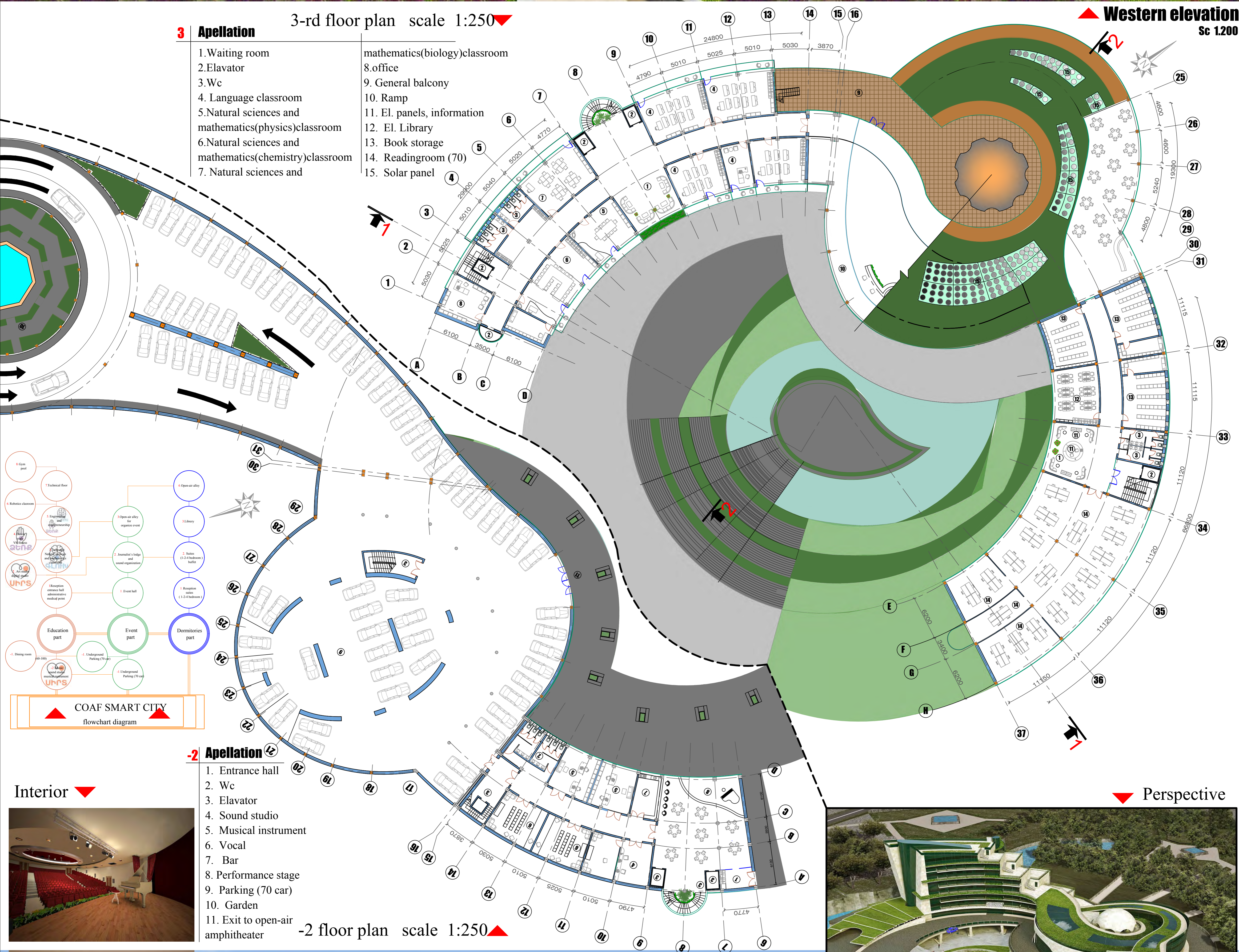


- +24.10
- +20.10
- +17.70
- +14.70
- +11.70
- +8.70
- +5.70
- +2.70
- 0.00

3 Apellation

3-rd floor plan scale 1:250

- | | |
|---|-------------------------------|
| 1. Waiting room | mathematics(biology)classroom |
| 2. Elavator | 8. office |
| 3. Wc | 9. General balcony |
| 4. Language classroom | 10. Ramp |
| 5. Natural sciences and mathematics(physics)classroom | 11. El. panels, information |
| 6. Natural sciences and mathematics(chemistry)classroom | 12. El. Library |
| 7. Natural sciences and | 13. Book storage |
| | 14. Readingroom (70) |
| | 15. Solar panel |



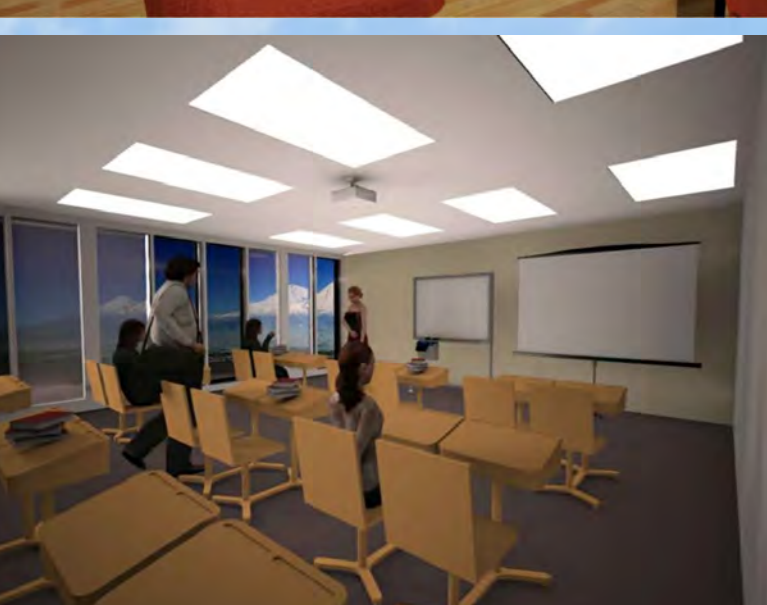
Western elevation Sc 1200

-2 Apellation

-2 floor plan scale 1:250

1. Entrance hall
2. Wc
3. Elavator
4. Sound studio
5. Musical instrument
6. Vocal
7. Bar
8. Performance stage
9. Parking (70 car)
10. Garden
11. Exit to open-air amphitheater

Interior



Section 2-2 Sc 1200



Perspective