

COAF SMART CAMPUS

Armavir region.

ARCHITECTURAL CONCEPT.

THE SITE AND THE MASTER PLAN.

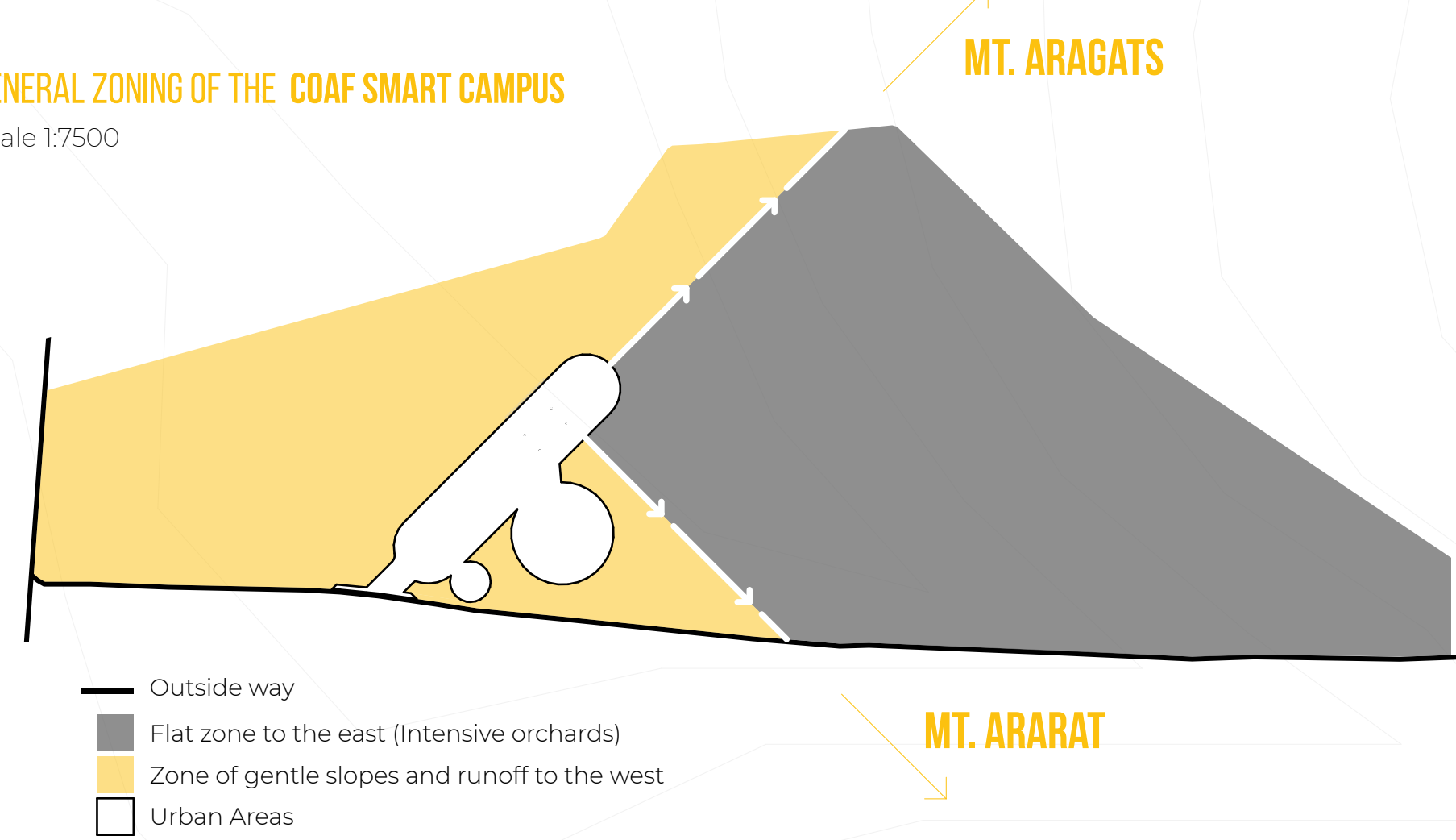
The Ararat and Aragats Mountains are determining in the landscape. Insinuating two directions that guide urban design.

The site has a topography that extends from east to west, where two zones are differentiated, a flat zone to the east (Intensive orchards) and a zone of gentle slopes and runoff to the west (Natural landscape, without human intervention).

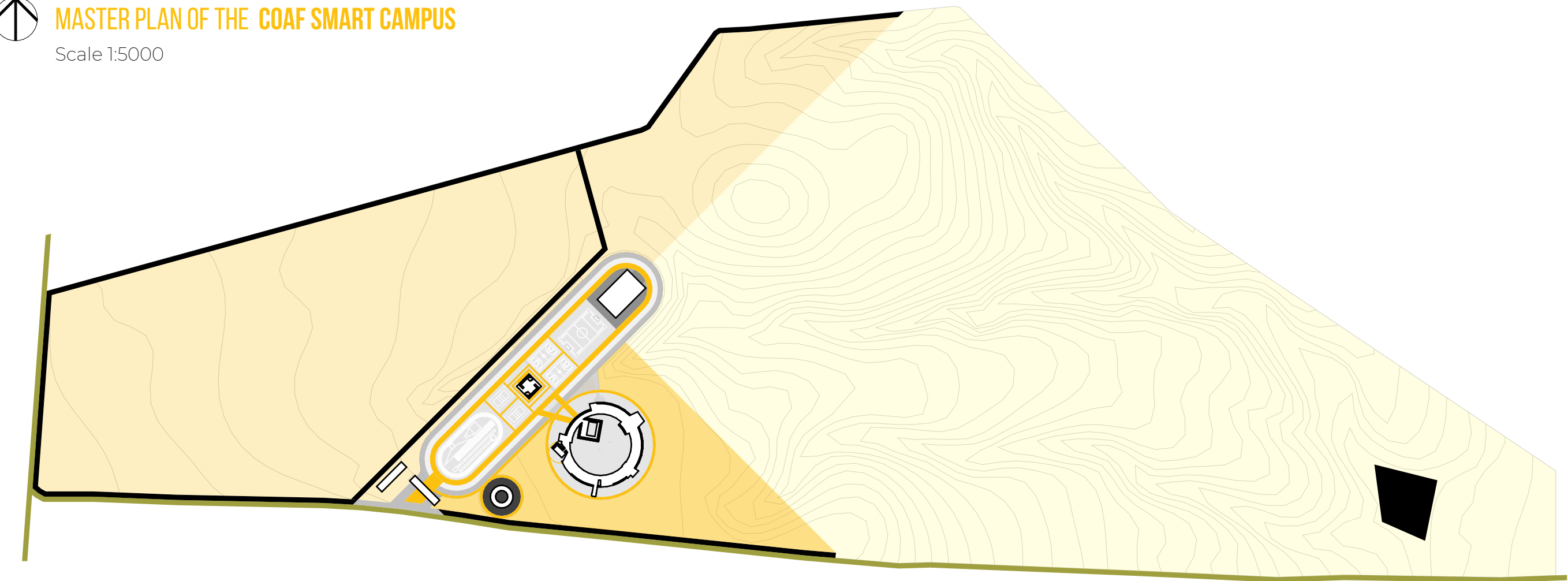
On the border between both areas, (adapting the land), the public space of the COAF SMART Campus is located, conceived as a linear boulevard in the direction of Mount Aragats and next to it, in the direction of Mount Ararat, the Educational facility main Building, with a circular shape define a central courtyard, that allows 360° of landscape view. (This circular shape obeys the implicit rotation of the human head when looking from the place to a mountain and to the other).

The linear boulevard conceived as a public space that starts from the Campus entrance, and whose perimeter is surrounded by the vehicle circuit, parking lots and ornamental trees, defining an interior public space where the Outdoor & Indoor Sports Area is located, and in perspective, at the end of the axis, the Events Center with the Aragats Mountain as background.

GENERAL ZONING OF THE COAF SMART CAMPUS
Scale 1:7500



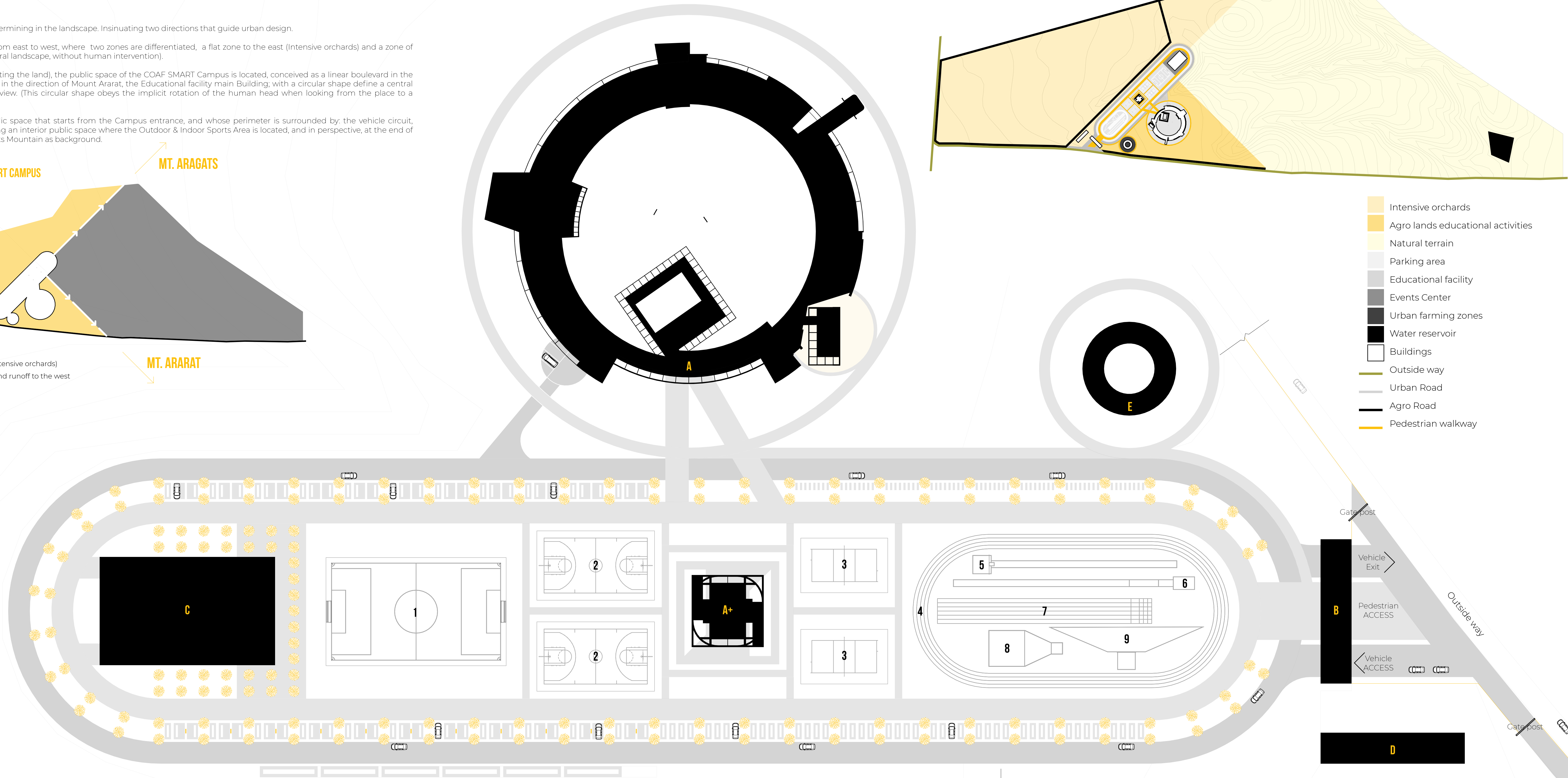
MASTER PLAN OF THE COAF SMART CAMPUS
Scale 1:5000



- Intensive orchards
- Agro lands educational activities
- Natural terrain
- Parking area
- Educational facility
- Events Center
- Urban farming zones
- Water reservoir
- Buildings
- Outside way
- Urban Road
- Agro Road
- Pedestrian walkway

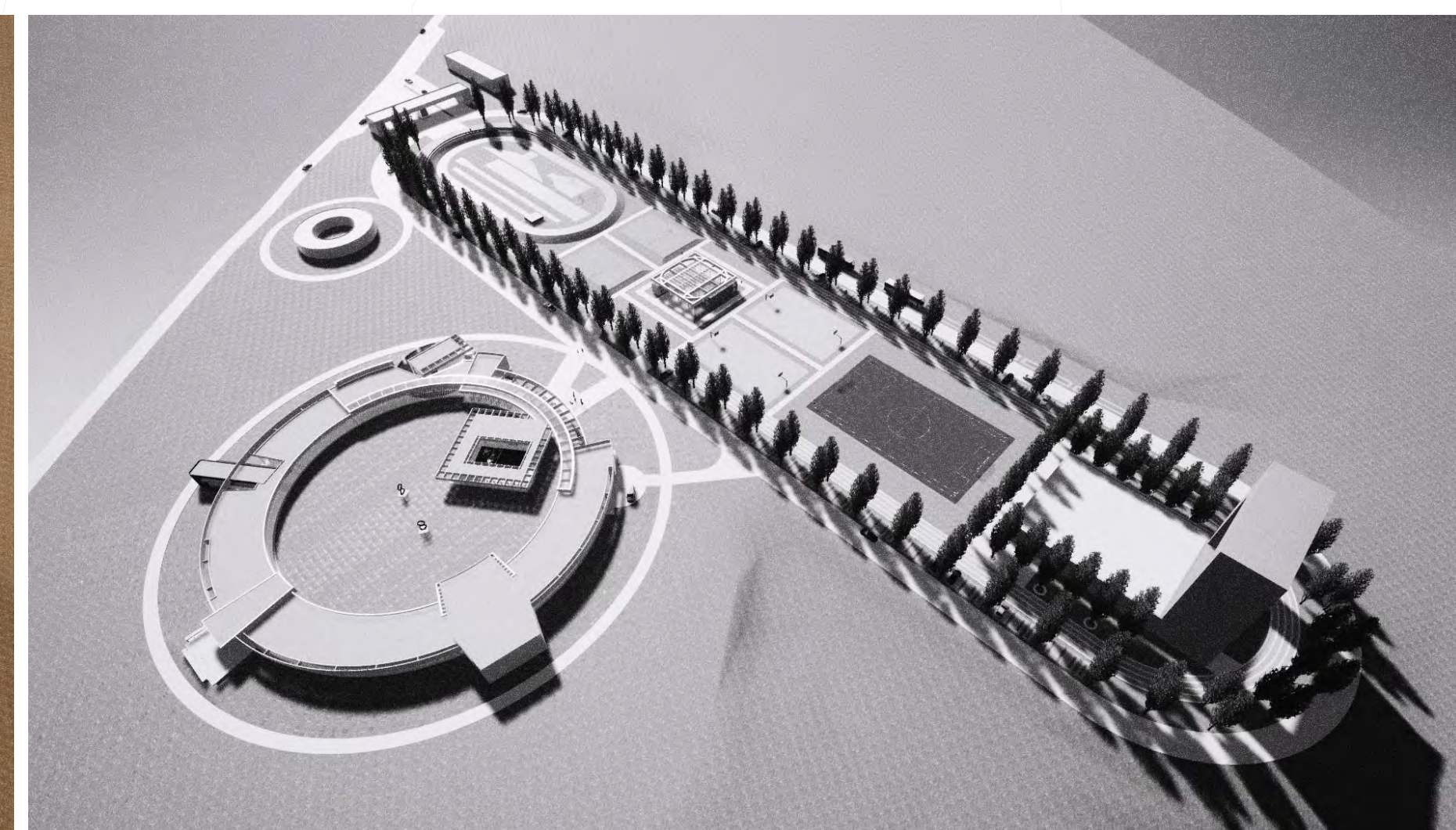
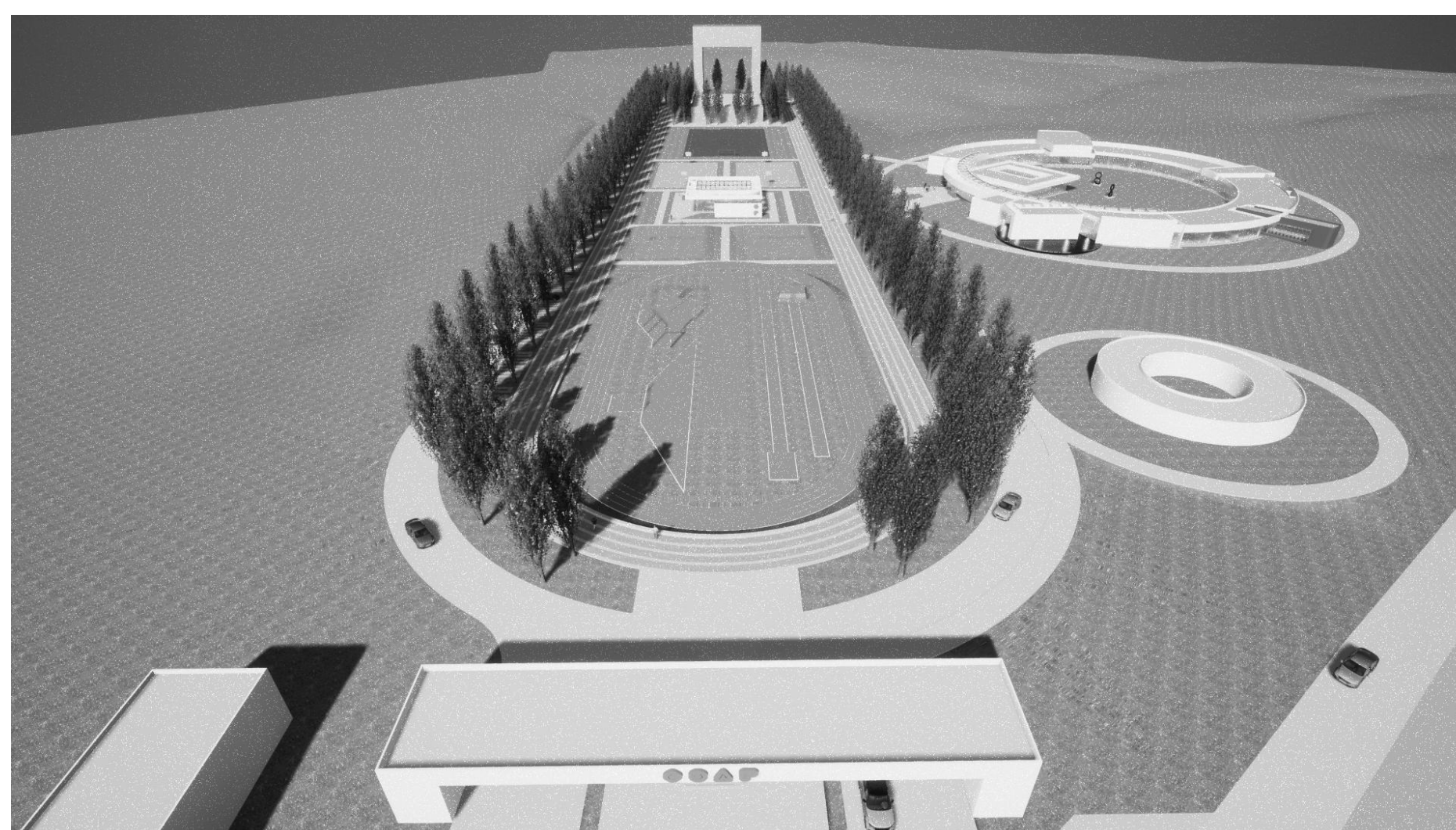
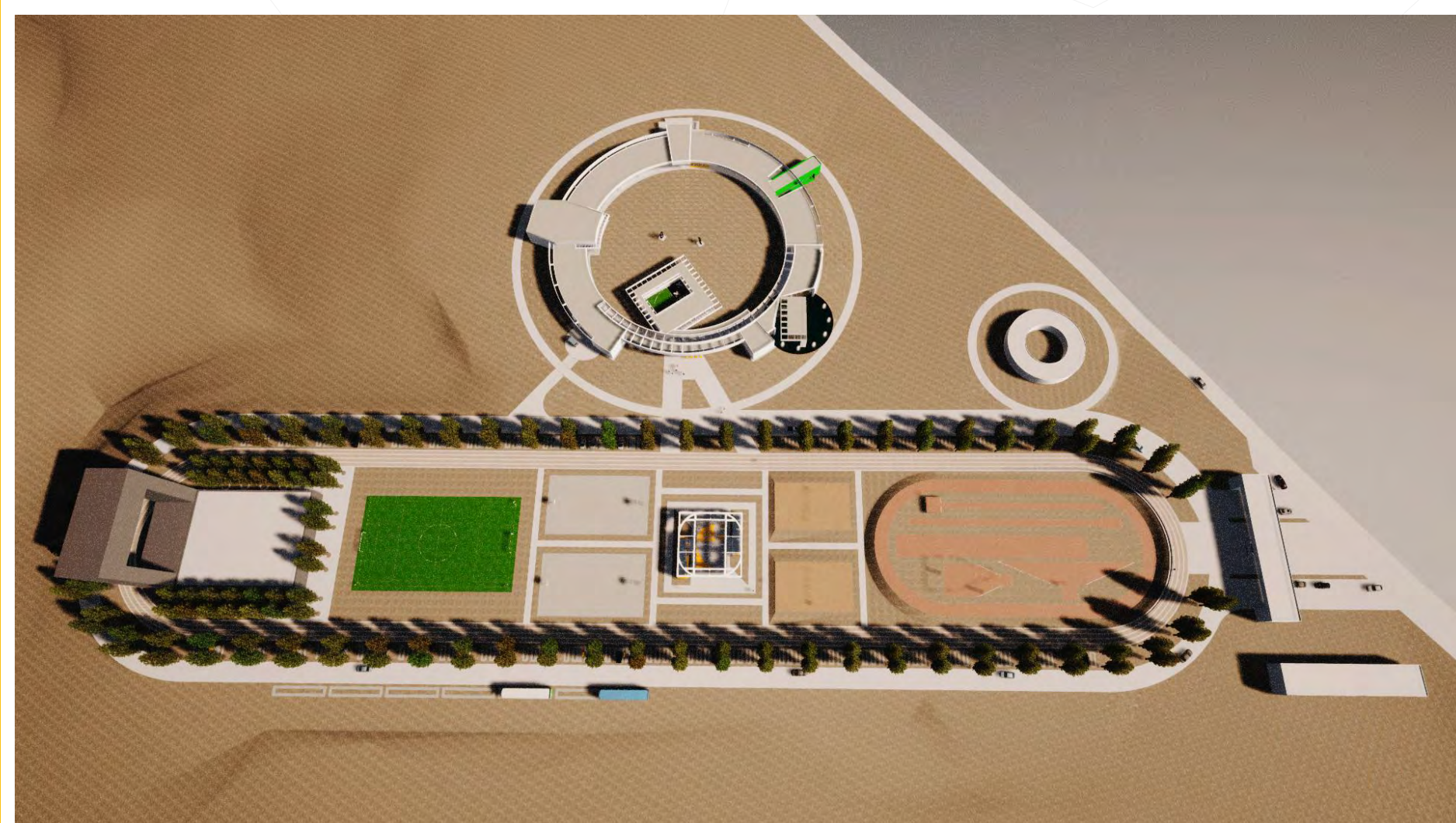
OUTDOOR SPORTS AREA

- 1 Soccer field 7
- 2 Multiple/Basketball
- 3 Volleyball
- 4 200 meter athletics track
- 5 Pole vault
- 6 Long jump and triple jump
- 7 Linear-track
- 8 Shot put
- 9 High jump
- Tree



URBAN AREA DETAIL OF THE MASTER PLAN OF THE COAF SMART CAMPUS
Scale 1:500

- A Educational facility
- A+ Indoor Sports Area
- B Reception point, Guardhouse/Security post
- C Events Center
- D Parking lot for heavy machinery, technical and storage areas
- E Greenhouse(s)



COAF SMART CAMPUS

Armvir region.

ARCHITECTURAL CONCEPT.

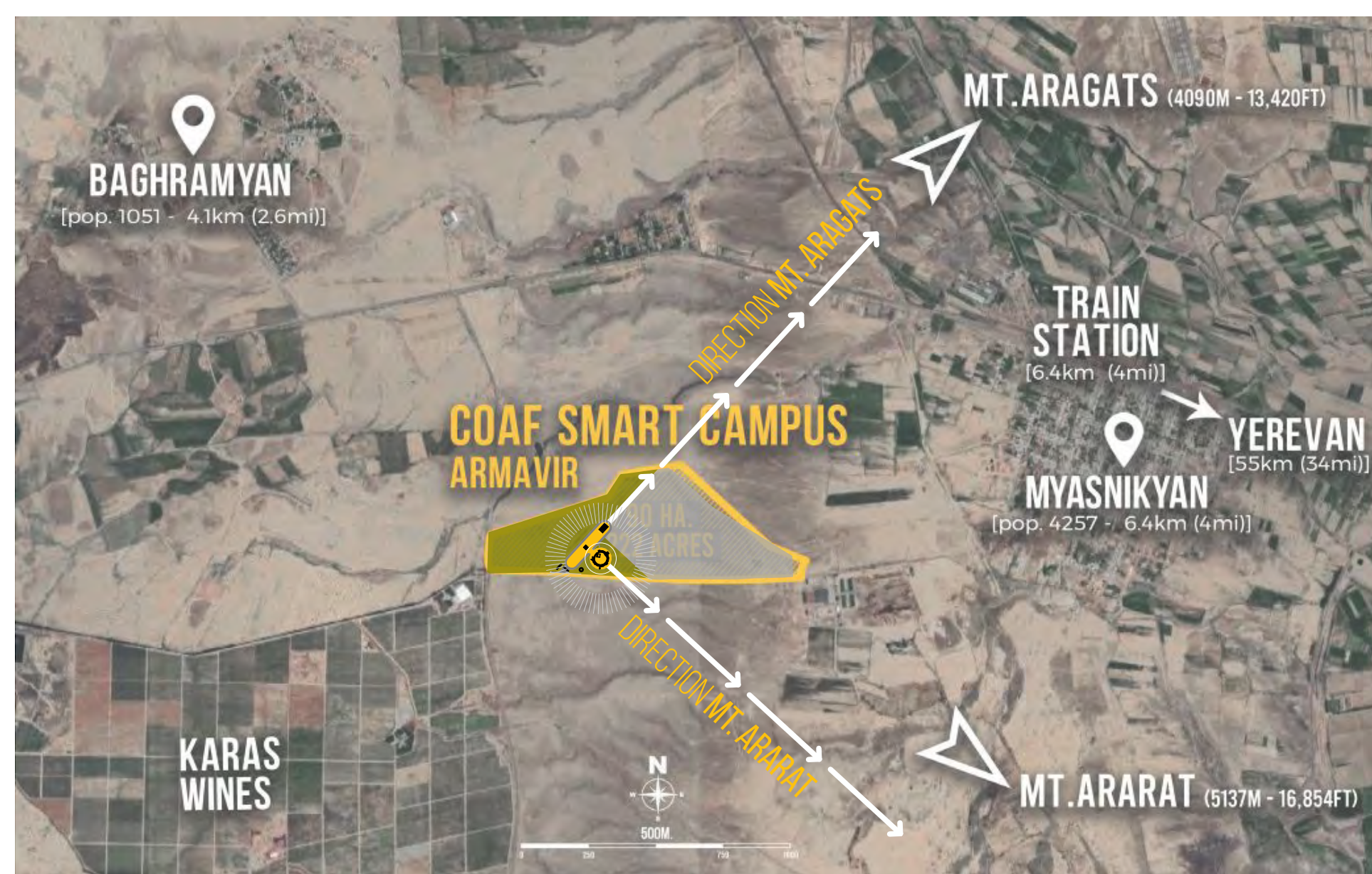
THE BRAND.

The COAF concept is integrated into the campus, in particular, the logo appears at the entrance to the Educational facility, the facade of the auditorium. And in a particular way, sculptures of men and women based on the pictograms of COAF, are located inside the central courtyard. (The sculpture of the woman "looking" at Mount Ararat and that of the Man at Mount Aragats).

Also in the inside Sports Hall, the cover refers to one of the COAF pictograms. And the COAF pictograms depicting a girl and a boy, indicate which is the toilet and dressing room according to gender.

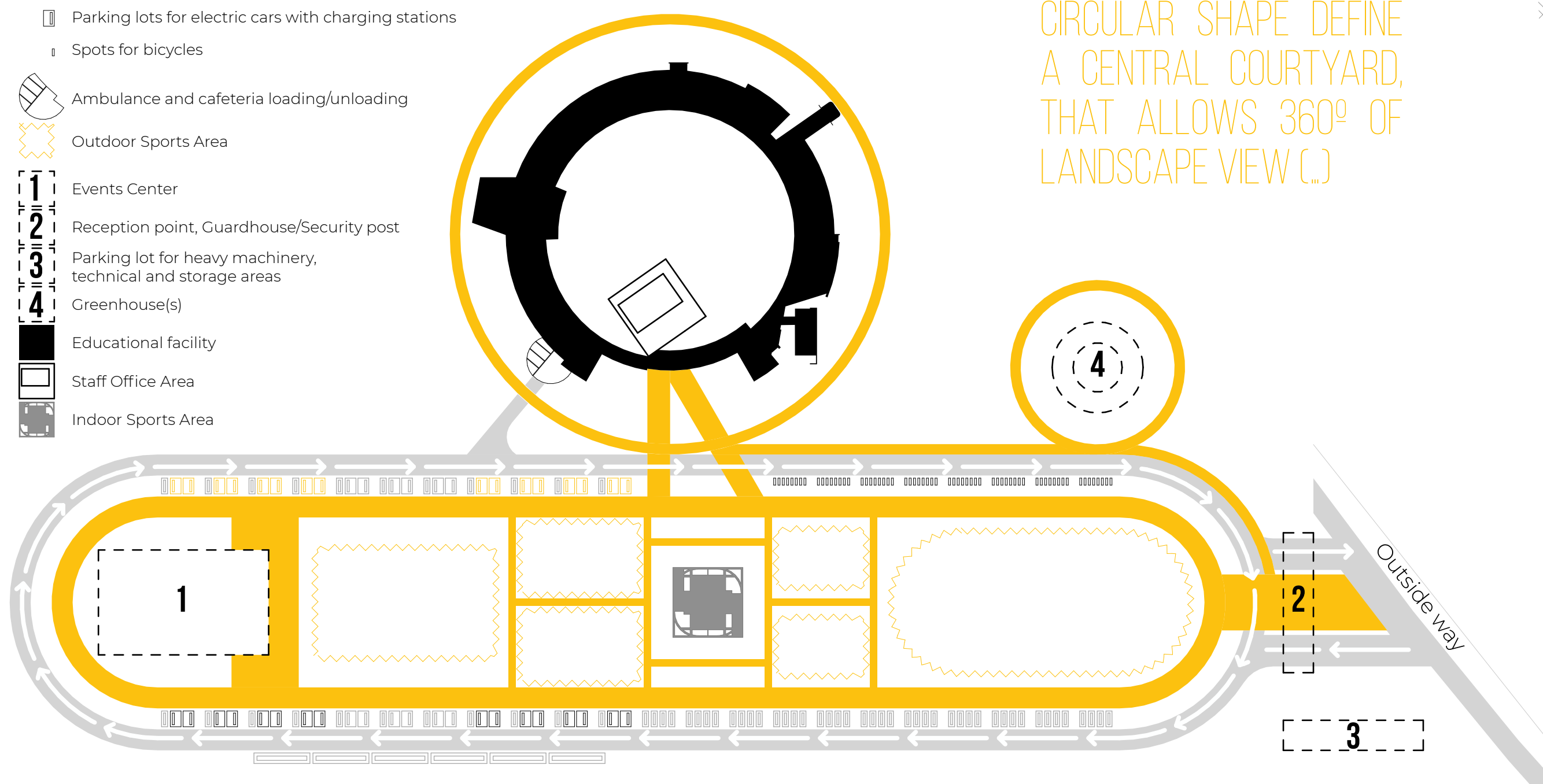
VIDEO LINK: <https://youtu.be/INuI51nN00>

(.) THE ARARAT AND ARAGATS MOUNTAINS DETERMINE THE LANDSCAPE, INSINUATING TWO DIRECTIONS, THAT GUIDE URBAN DESIGN (...).



- Pedestrian walkway
- Urban Road
- Parking lots for buses
- Parking lots
- Parking lots for disabled people
- Parking lots for electric cars with charging stations
- Spots for bicycles
- Ambulance and cafeteria loading/unloading
- Outdoor Sports Area
- Events Center
- Reception point, Guardhouse/Security post
- Parking lot for heavy machinery, technical and storage areas
- Greenhouse(s)
- Educational facility
- Staff Office Area
- Indoor Sports Area

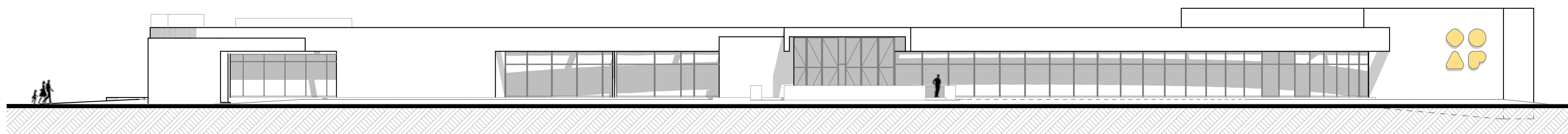
(.) THE EDUCATIONAL FACILITY MAIN BUILDING; A CIRCULAR SHAPE DEFINE A CENTRAL COURTYARD, THAT ALLOWS 360° OF LANDSCAPE VIEW (...)



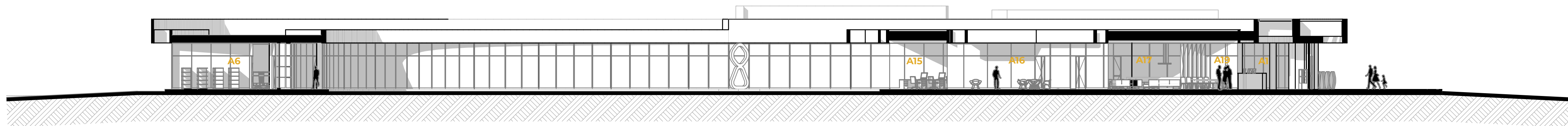
SMART CAMPUS FLOW CHART DIAGRAM, AND BASIC CONCEPT OF DETAILED DESIGN BUILDING PROPOSAL Scale 1:2500



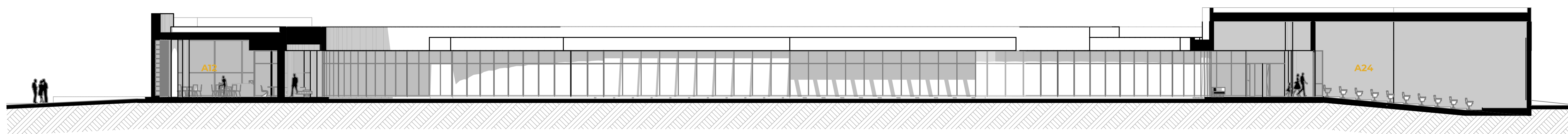
FRONT FACADE Scale 1:200



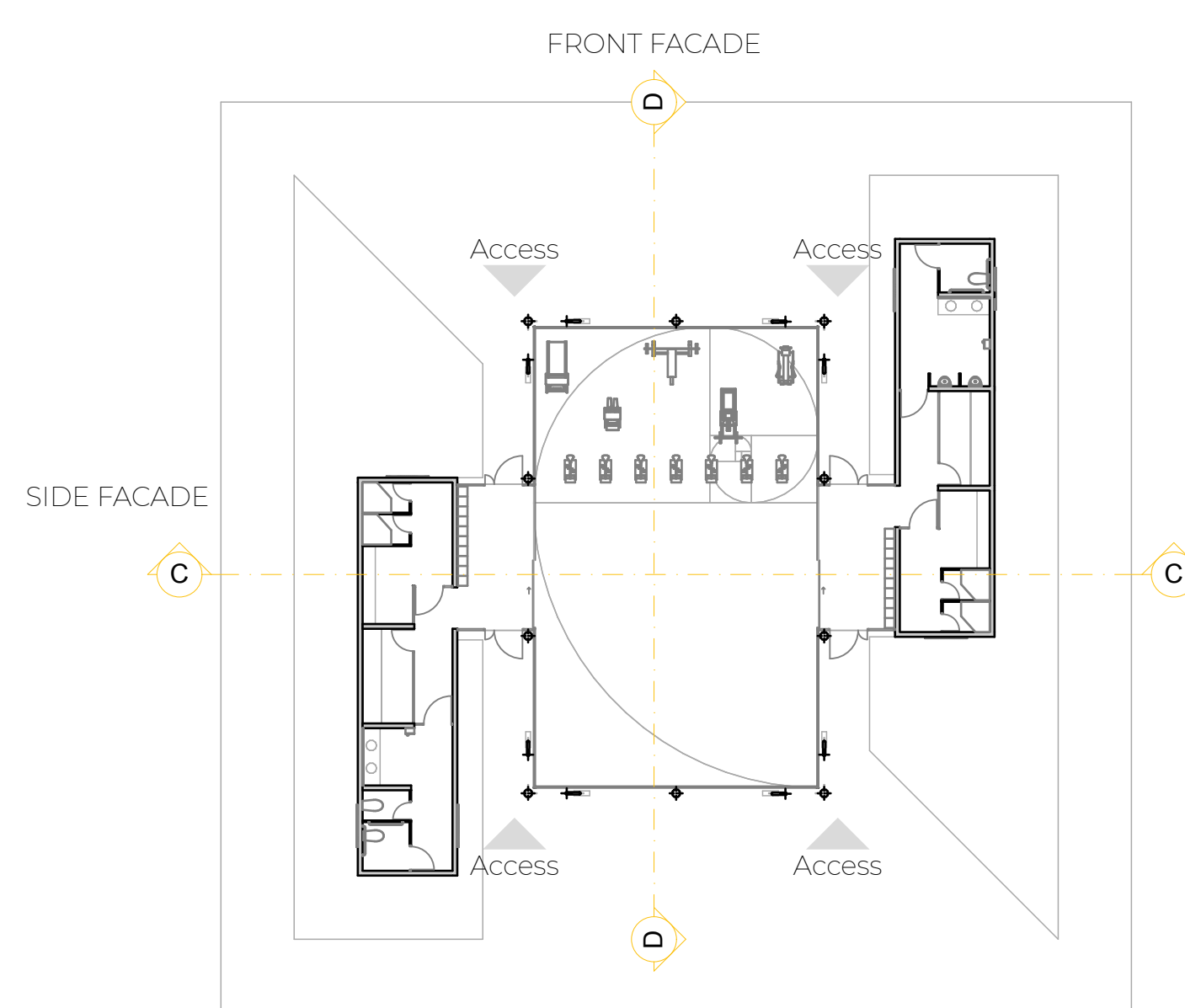
REAR FACADE Scale 1:200



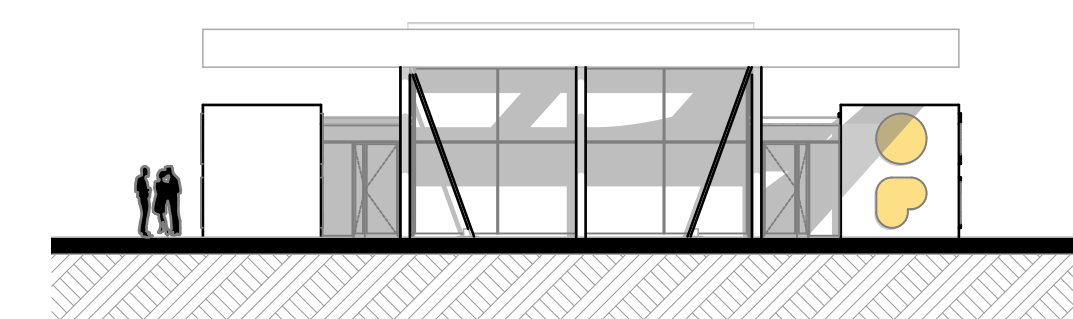
SECTION A Scale 1:200



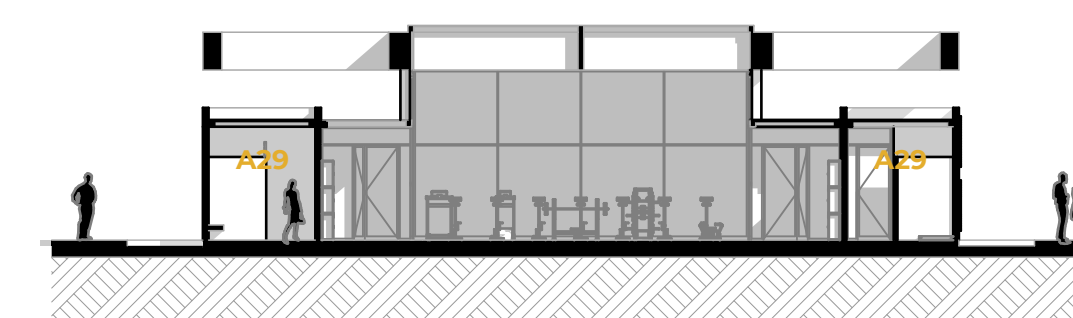
SECTION B Scale 1:200



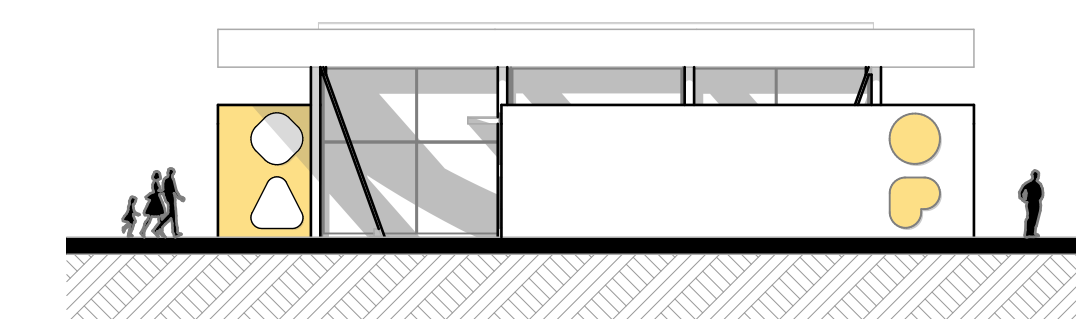
INDOOR SPORTS AREA Scale 1:200



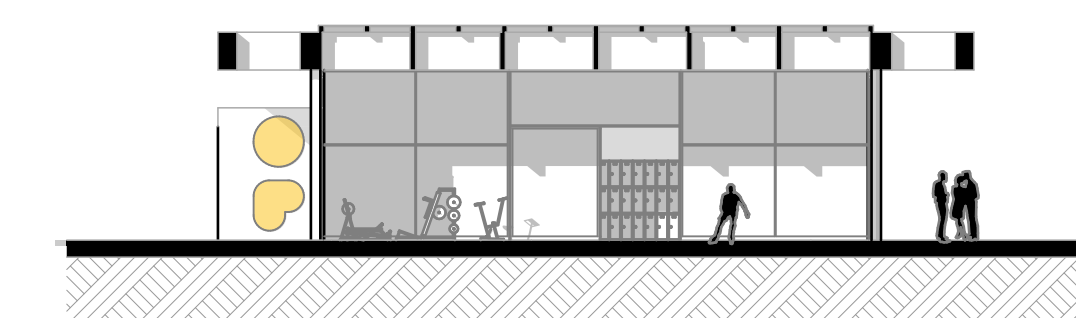
FRONT FACADE Scale 1:200



SECTION C Scale 1:200



SIDE FACADE Scale 1:200



SECTION D Scale 1:200



COAF SMART CAMPUS

Armavir region.

ARCHITECTURAL CONCEPT.

ARCHITECTURAL DISTRIBUTION OF THE EDUCATIONAL FACILITY.

The "main building" is conceived as a ring, inside of which, the "Staff Office Area", a square building dominates the yard. And as a separate construction, the "inside Sports Hall" is integrated with the Outdoor Sports Area.

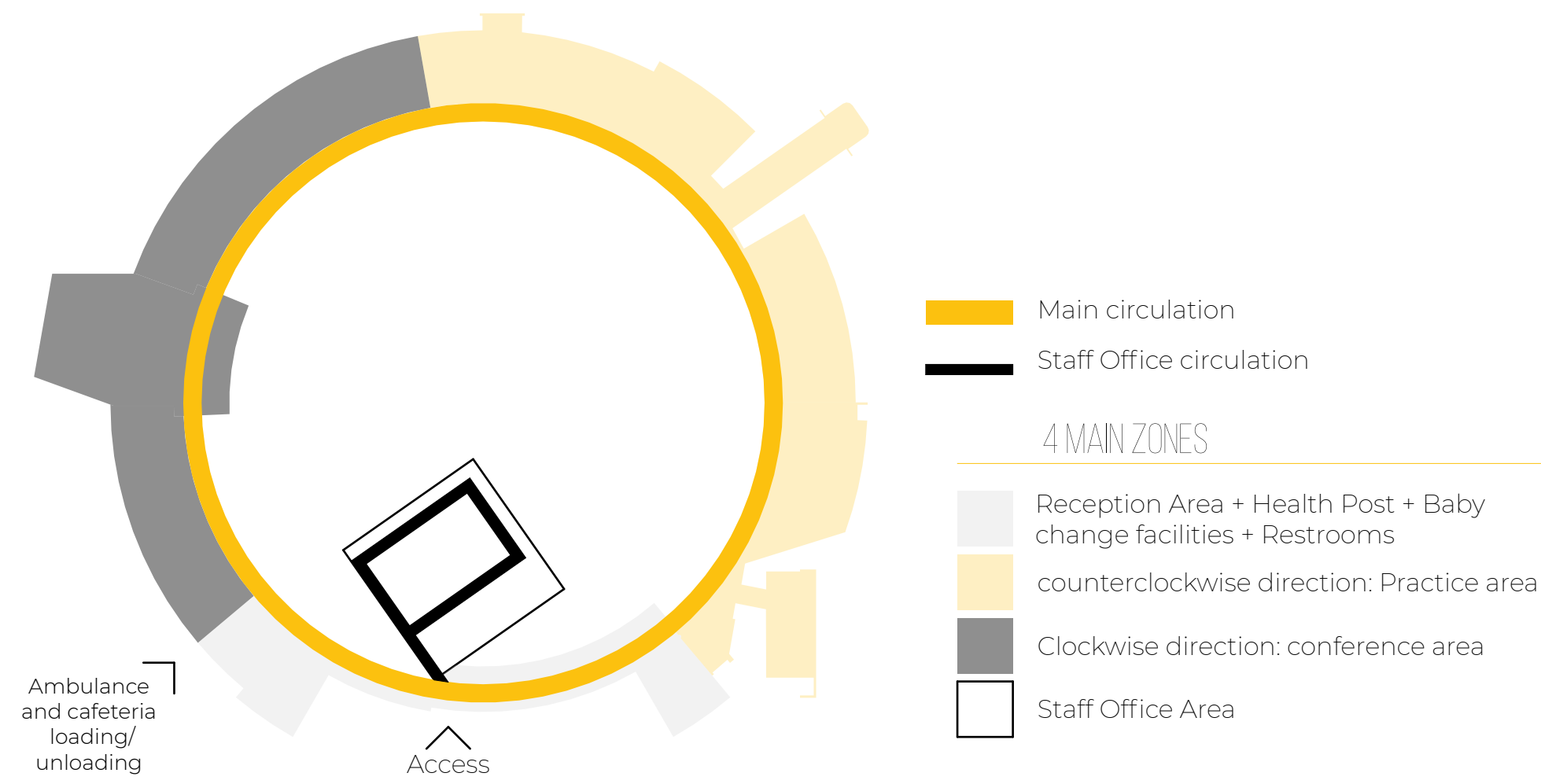
INTERIOR CIRCULATION AND ZONING.

The educational facility main building is conceived from **4 MAIN ZONES**.

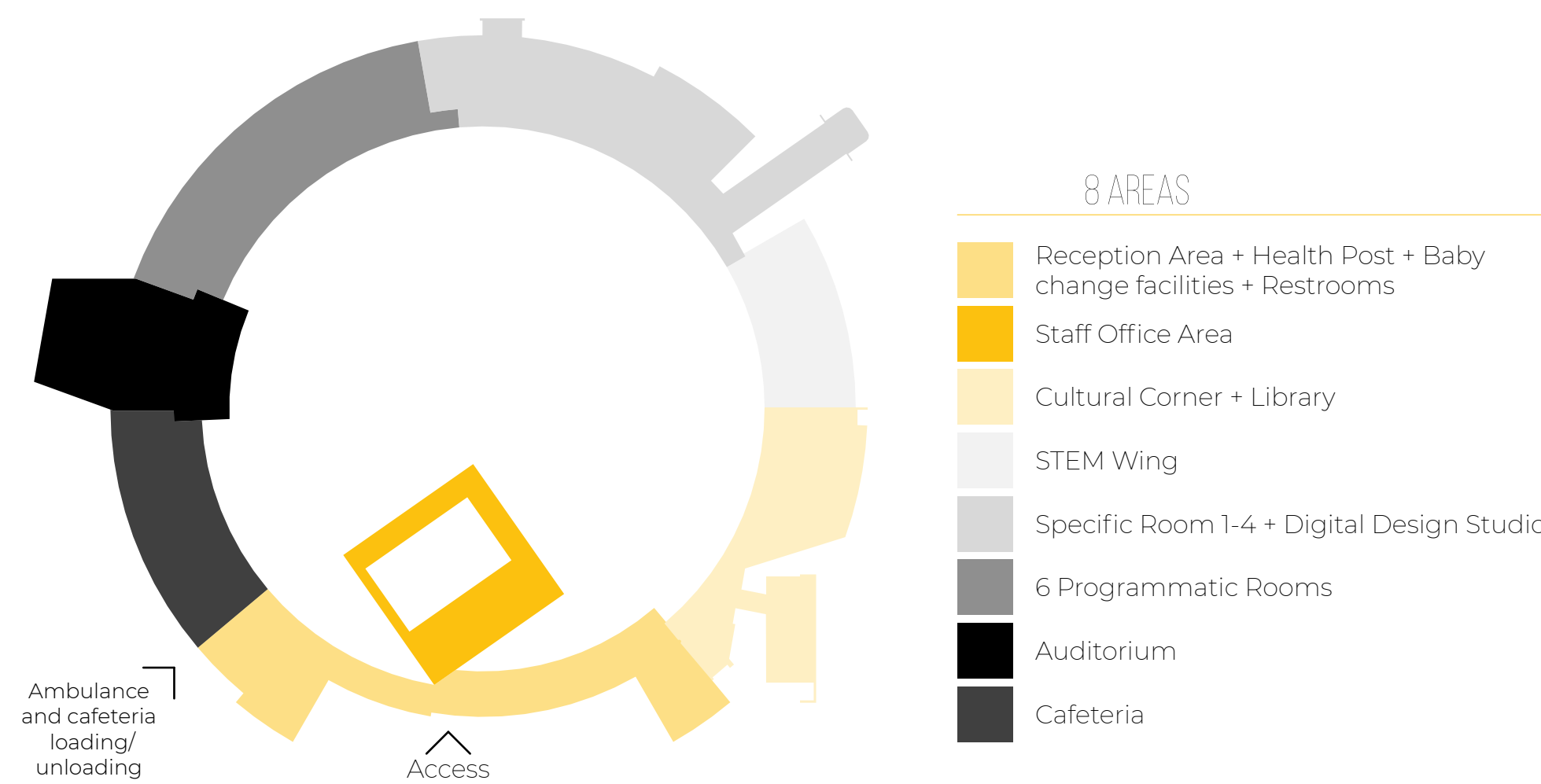
- 1 "Access zone" integrates: Reception Area, Bathrooms and Health Post, connect with:
- 2 "Staff Office zone", (inside the central courtyard, with visual control of the entire building).
- 3 "Conference zone" from the Reception Area (in a clockwise direction) including the Cafeteria, Auditorium and standard Programmatic Rooms.
- 4 "Educational practice zone" departing from Reception Area (counterclockwise direction): Cultural Corner, Library, STEM Wing, Digital Studio, Specific Programmatic Room, to meet standard Programmatic Rooms, and etc.

These four main zones are made up of **8 AREAS** that can be isolated, at the convenience of the operating hours, easily establishing different levels of control. In addition, spaces and areas are grouped for convenience, for example: Robotics Lab and Dance Studio, are divided by a folding door to integrate robotics and motion capture. Etc.

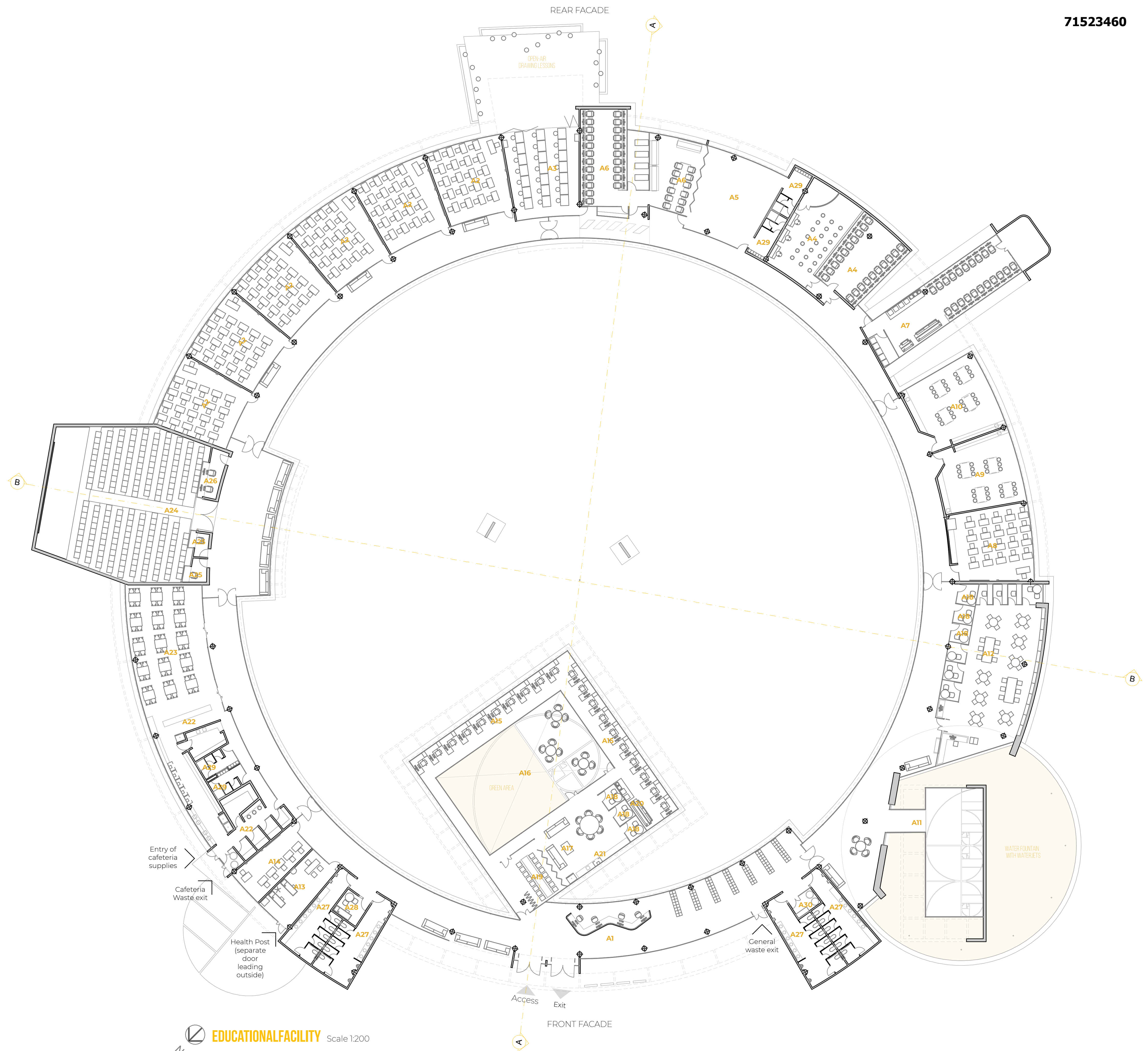
EDUCATIONAL FACILITY MAIN BUILDING FLOW CHART DIAGRAM Scale 1:750



EDUCATIONAL FACILITY MAIN BUILDING ZONING MASTER PLAN Scale 1:750



A Educational facility		Pers ons
A1	Reception Area	4
A2	Programmatic Rooms	
A2	Art	21
A2	Music	21
A2	Athletics	21
A2	Engineering	21
A2	Languages	21
A2	Entrepreneurship	21
A3	Specific Room 1: Arts Studio	21
A4	Specific Room 2: Music Room	26
A5	Specific Room 3: Dance Studio	21
A6	Specific Room 4: Robotics Lab	21
A7	Digital Design Studio	21
STEM Wing		
A8	Geography	21
A9	Biology	21
A10	Chemistry/Physics	21
Cultural Corner		
Library		
Health Post		
A13	First-aid intervention	
A14	Education/seminars	
Staff Office Area		
A15	General office area with work desks	
A16	Lounge area (Exterior)	
A17	Lounge area (Interior)	
A18	A few separate work cubicles/silent corners	
A19	Activity centers or meeting areas	12
A20	Resource room	
A21	Kitchenette/coffee corner	
Cafeteria		
A22	Professional kitchen	
A23	Dining area	60
Auditorium		
A24	Auditorium room	212
A25	two simultaneous translation	2
A26	Sound/lighting, control/projection room	2
Bathrooms		
A28	Baby change facilities	
A29	Small changing rooms & showers	
A30	Cleaning room	



EDUCATIONAL FACILITY Scale 1:200

