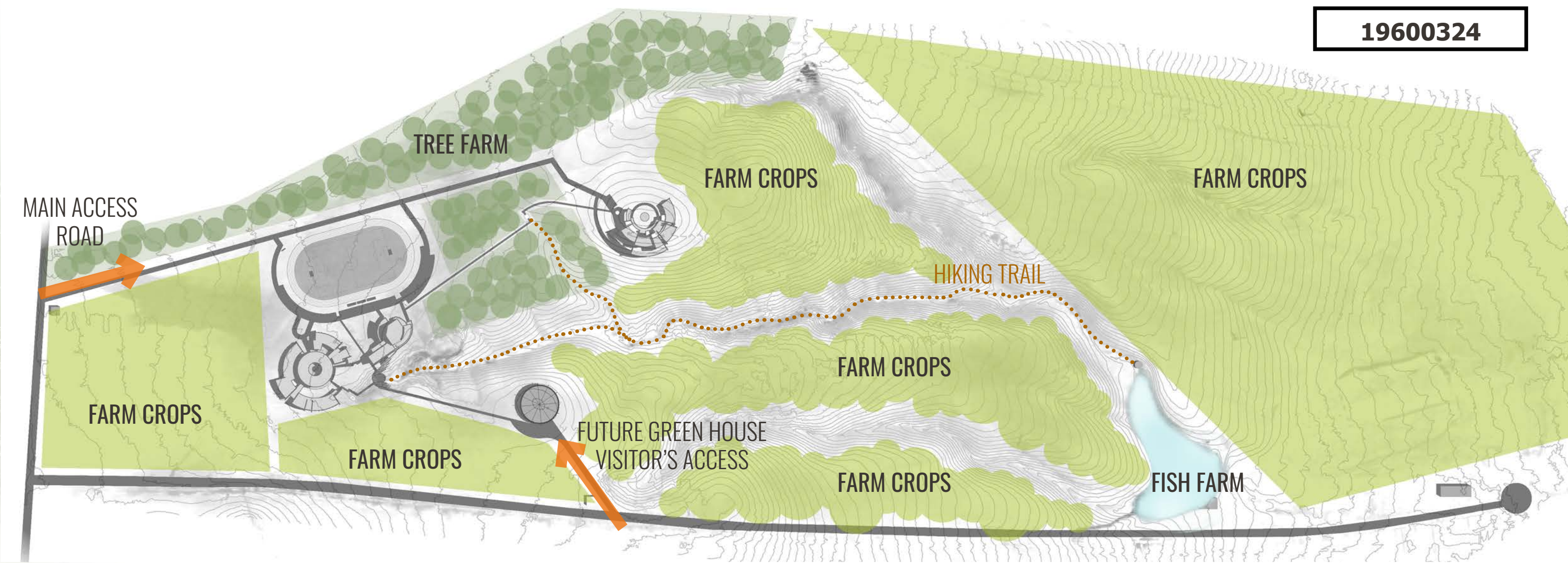
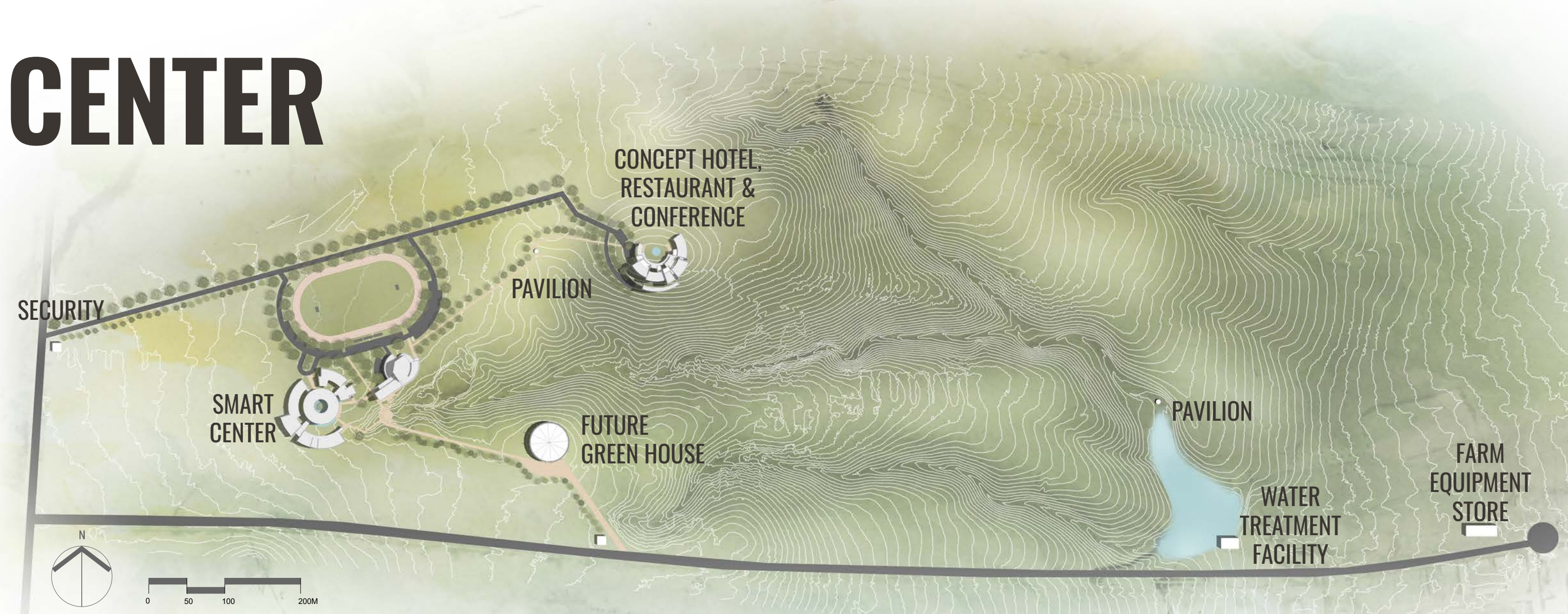


# COAF SMART CENTER ARMAVIR CAMPUS

The minds of Armenia's future generation can be nurtured in an environment designed to shape their identity, inspire creativity, and teach collaboratively. Our vision is to create spaces that will embolden the learners and help them explore their interests and ideas: a development that connects the built environment to nature and promotes life and growth in the entire site.

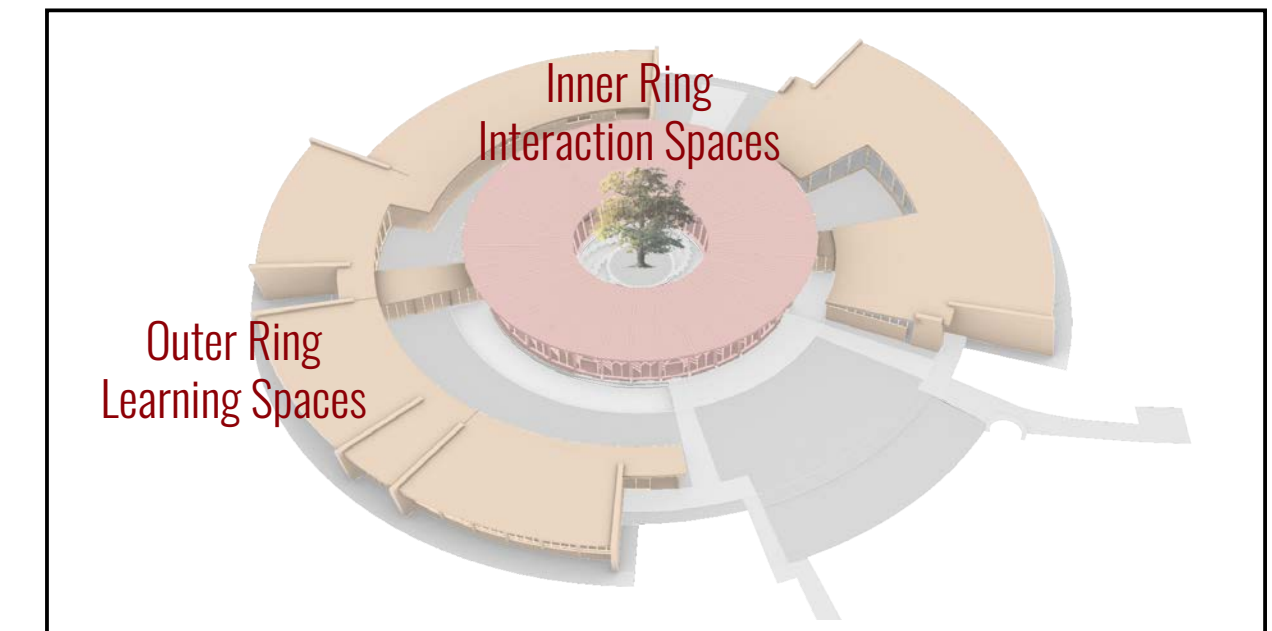
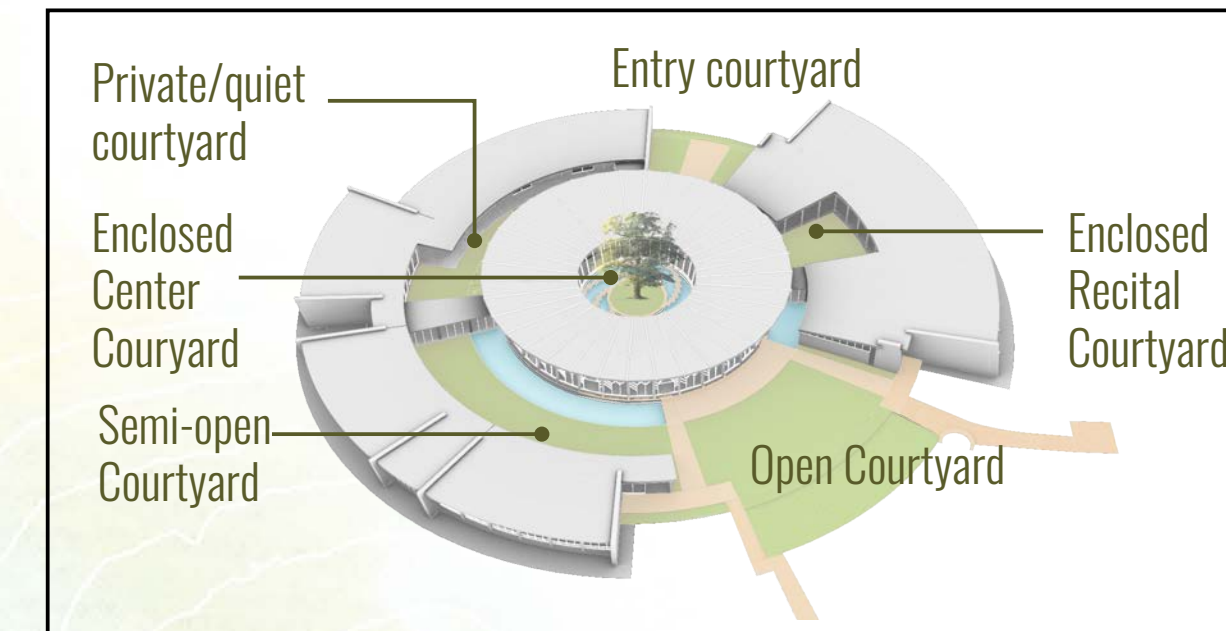
A unique feature of the site is a long valley at the relative center. By planting fruit trees along both sides of the valley, a visual axis is created. An amphitheater at the tip of the valley provides an outdoor event venue for various activities. The program spaces are distributed into 3 primary buildings - Education; Auditorium and the Concept Hotel.

The ARMENIAN ETERNITY SIGN inspires the shape of the circular buildings. Like this symbol, the buildings create a loop that ties the spatial experience as a whole while keeping the motion.



19600324

The idea of the whole site is to create a self-sufficient, sustainable, modern and high-tech development. It may be developed in phases. The buildings are all designed to maximize natural lighting and ventilation. The ponds in the Education Building can be converted to a simple rainwater harvesting system. The school educates people about technological advancement, artificial intelligence and robotics for farming and agriculture that can later be applied and showcased in the actual campus farm.



The architecture is mainly creating a diversity of spaces. The courtyards, for example, varies in degrees of size and openness. The glass windows visually connect the spaces together.

The INNER RING offers an enclosed and safe environment for students to exchange ideas. These spaces encourage collaboration and sharing of knowledge. The OUTER RING is more connected to the outer surrounding, even though it consists more private spaces for learning.



SOUTHERN FACADE. The columns are "branching" out to support overhang for shading.



NORTHERN FACADE. The columns are "rooted" from the ground and leaning towards the center.

Classrooms with southern exposure has a reverse inclination of glass to support a long overhang which blocks the summer sun, but allows the winter sun into the room.

Building materials are the common local limestone and concrete. Curved walls will be built up by faceted straight section of glass and concrete in order to minimize excessive material and fabrication cost.



1 Visitors and students are greeted at the entrance by Mount Ararat framed between the Education Building and the Auditorium.



2 Bird's eye view

**FUTURE GREEN HOUSE**  
This green house expansion can be affiliated with local university in the study and exhibition of high-tech agriculture such as vertical farming; use of unmanned tractors; drones and robotics in farming.

**AUDITORIUM/ PERFORMANCE HALL**  
Combining the auditorium and performance hall into one venue is economical and utilizes the building to its maximum schedule capacity.



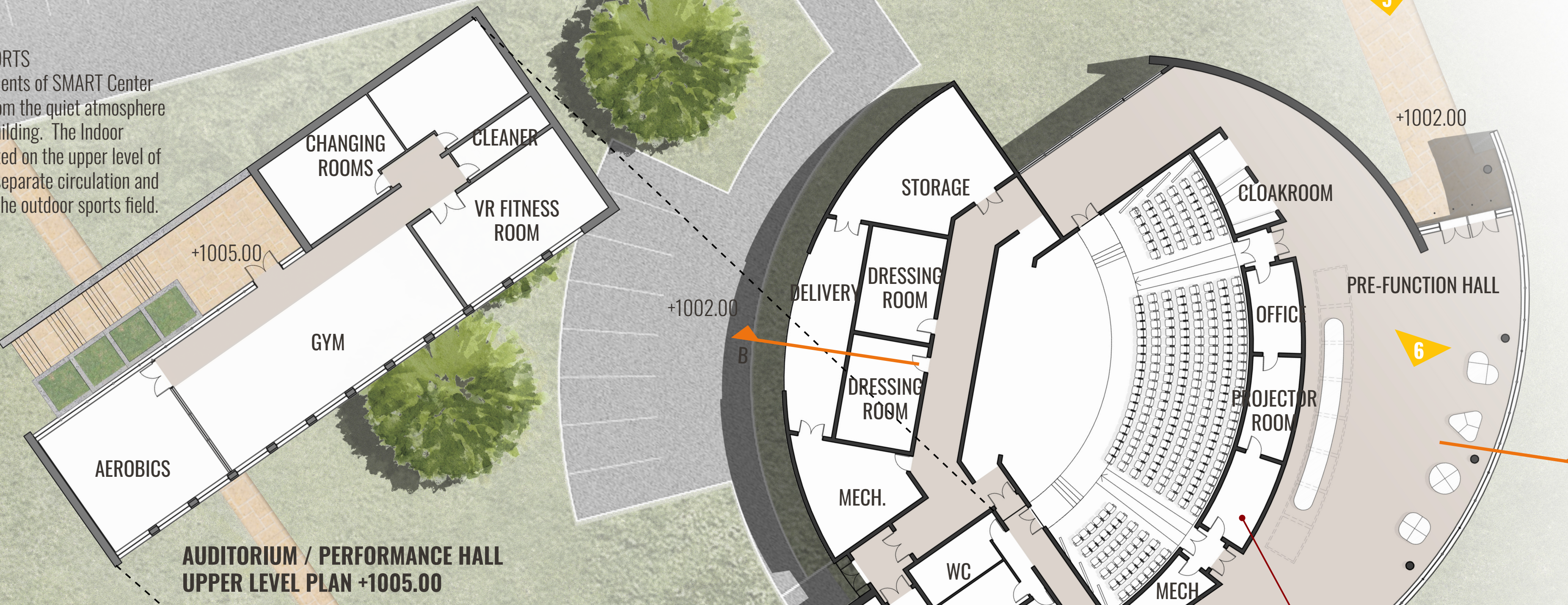
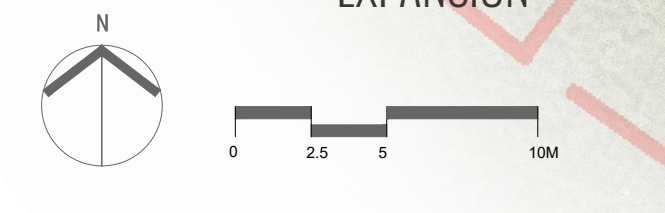
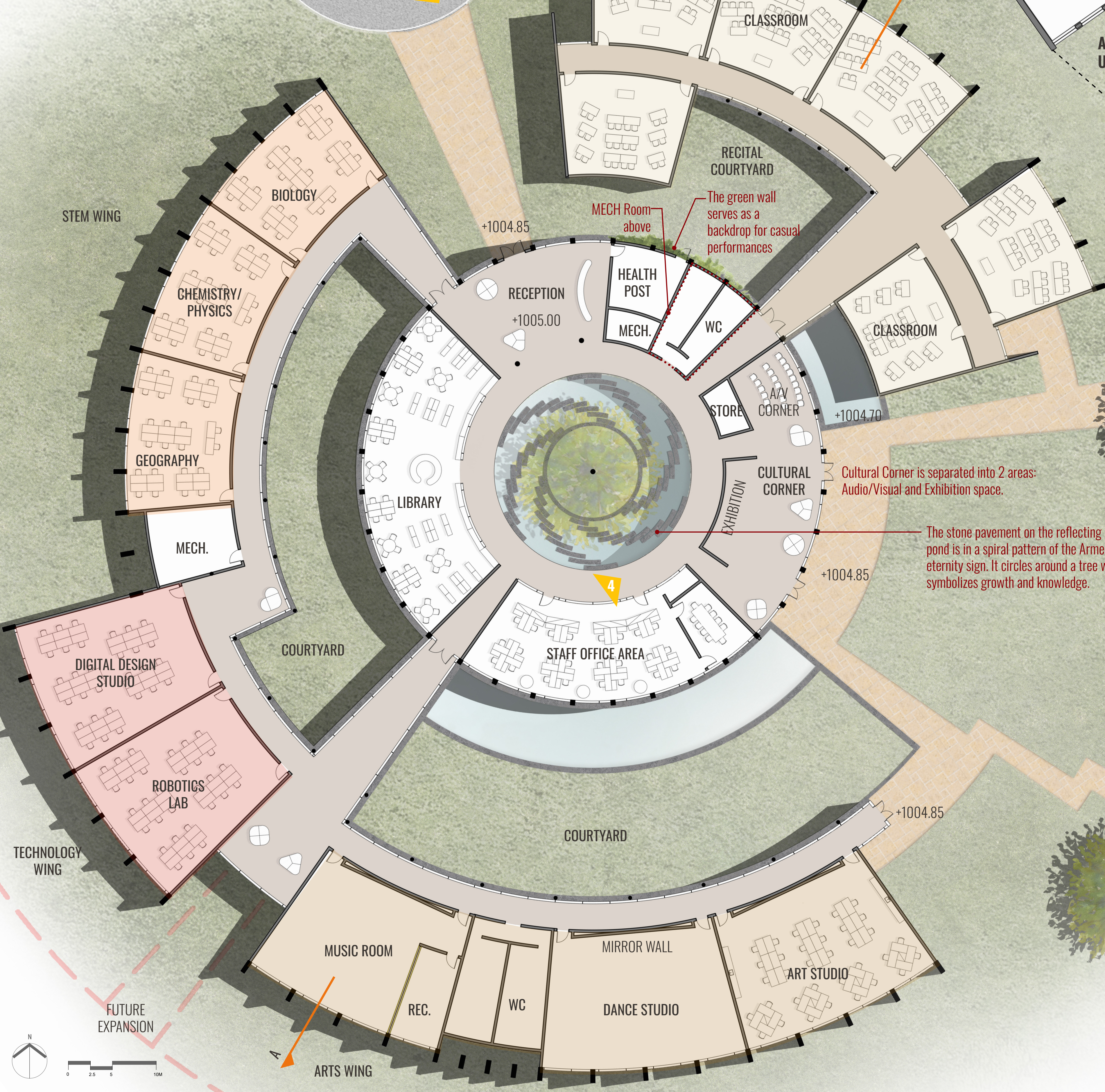
3 EDUCATION BUILDING. Main Entrance



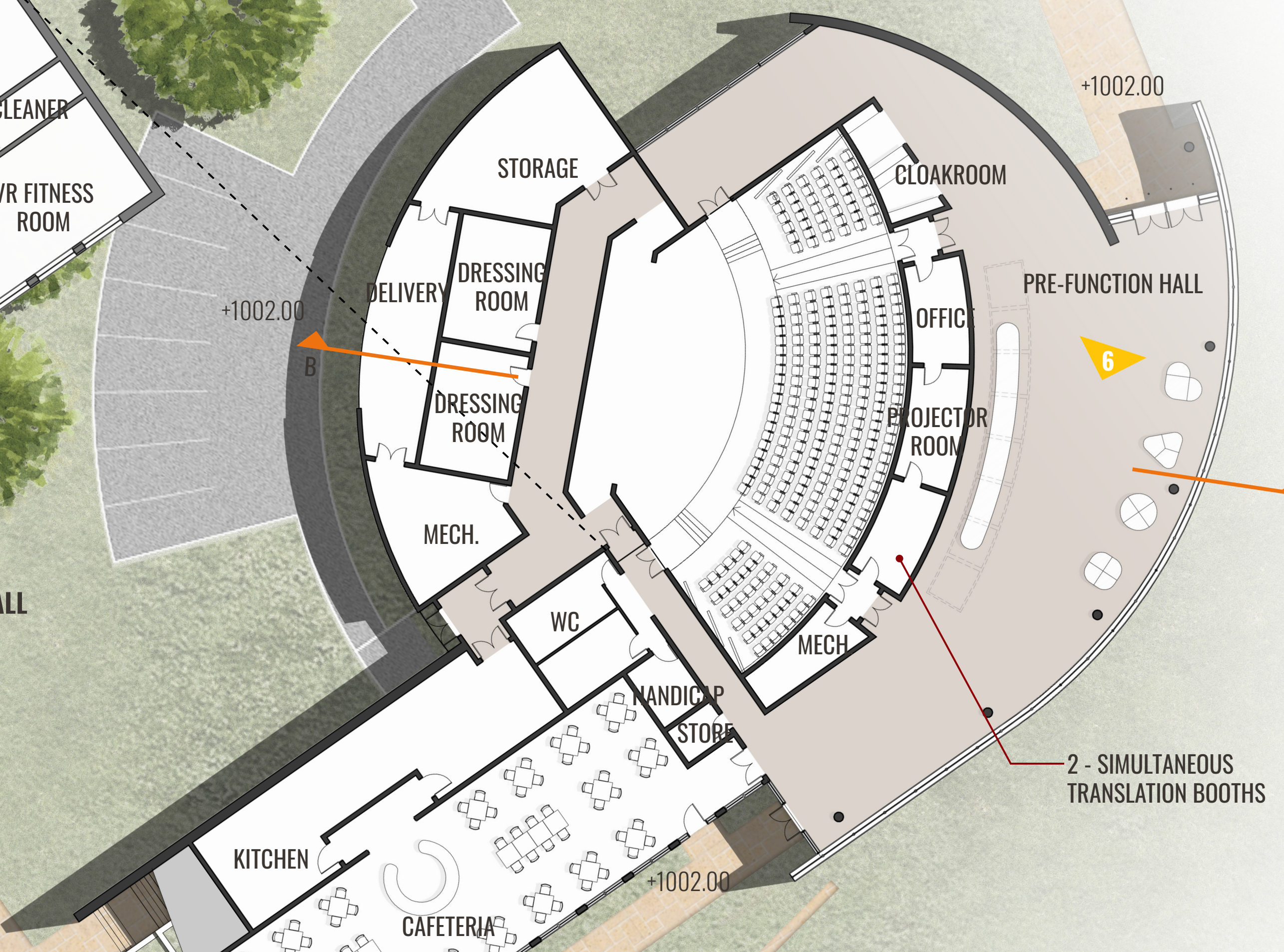
4 The interior is accented by the brand color of COAF. The tree symbolizes growth as the school is a place to nurture minds. The architecture language uses the tree as a metaphor throughout the architecture design.

**CAFÉ/INDOOR SPORTS**  
The leisure components of SMART Center is situated away from the quiet atmosphere of the Education Building. The Indoor Sports area is located on the upper level of the cafeteria with separate circulation and close proximity to the outdoor sports field.

**EDUCATION BUILDING  
MAIN LEVEL PLAN +1005.00**



**AUDITORIUM / PERFORMANCE HALL  
UPPER LEVEL PLAN +1005.00**



**AUDITORIUM / PERFORMANCE HALL  
MAIN LEVEL PLAN +1002.00**

The green wall serves as a backdrop for casual performances

Cultural Corner is separated into 2 areas: Audio/Visual and Exhibition space.

The stone pavement on the reflecting pond is in a spiral pattern of the Armenian eternity sign. It circles around a tree which symbolizes growth and knowledge.

**AMPHITHEATRE**  
The valley forms the backdrop for the stage, a place for concert, gathering, assembly, etc.



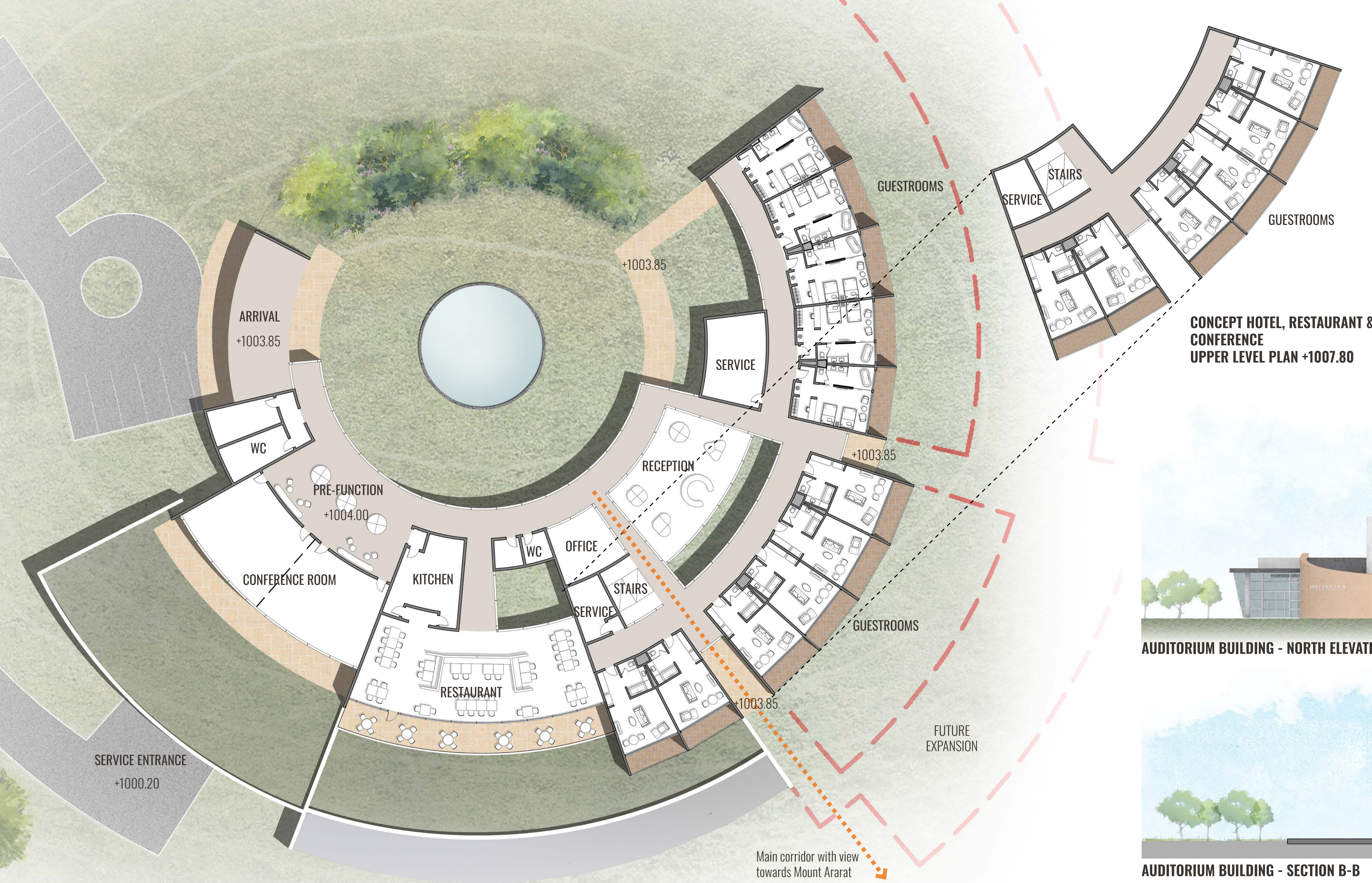
5 AUDITORIUM / PERFORMANCE HALL. Main Entrance



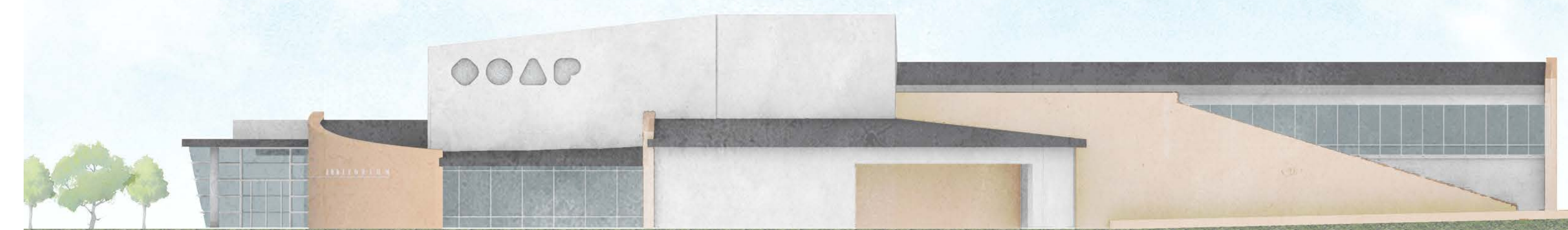
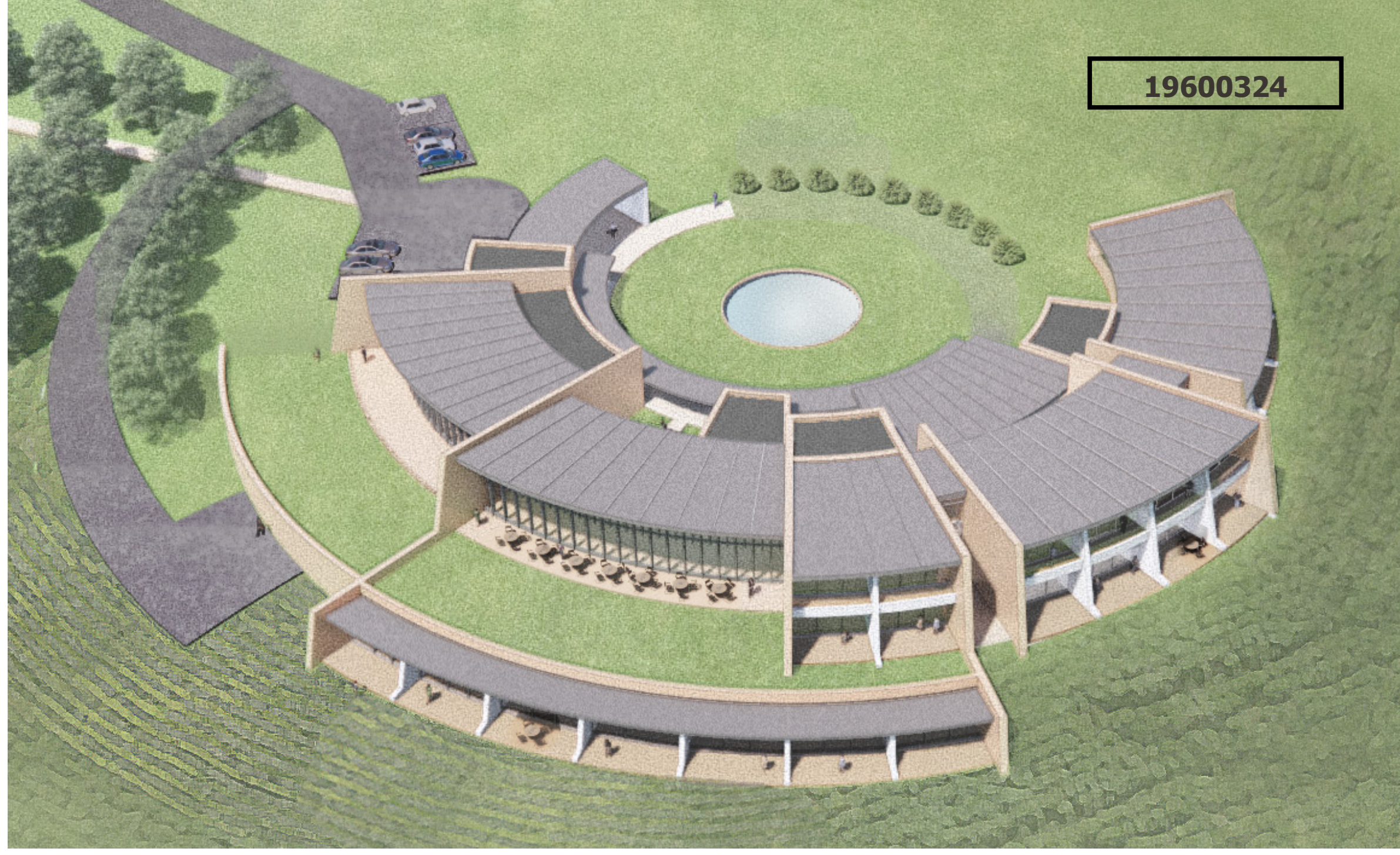
7 CAFETERIA. A place of interaction and leisure with Mount Ararat view



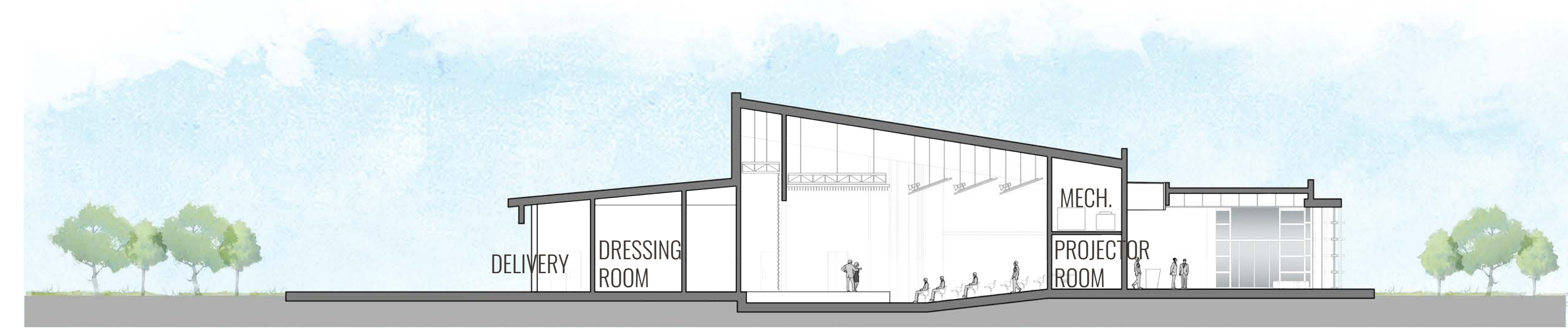
6 AUDITORIUM/PERFORMANCE HALL LOBBY. The limestone reception desk can be used as snacks and drinks bar during a pre-function event and intermission activities. Lounge sofas are in the shape of COAF logo and color.



CONCEPT HOTEL, RESTAURANT & CONFERENCE UPPER LEVEL PLAN +1007.80

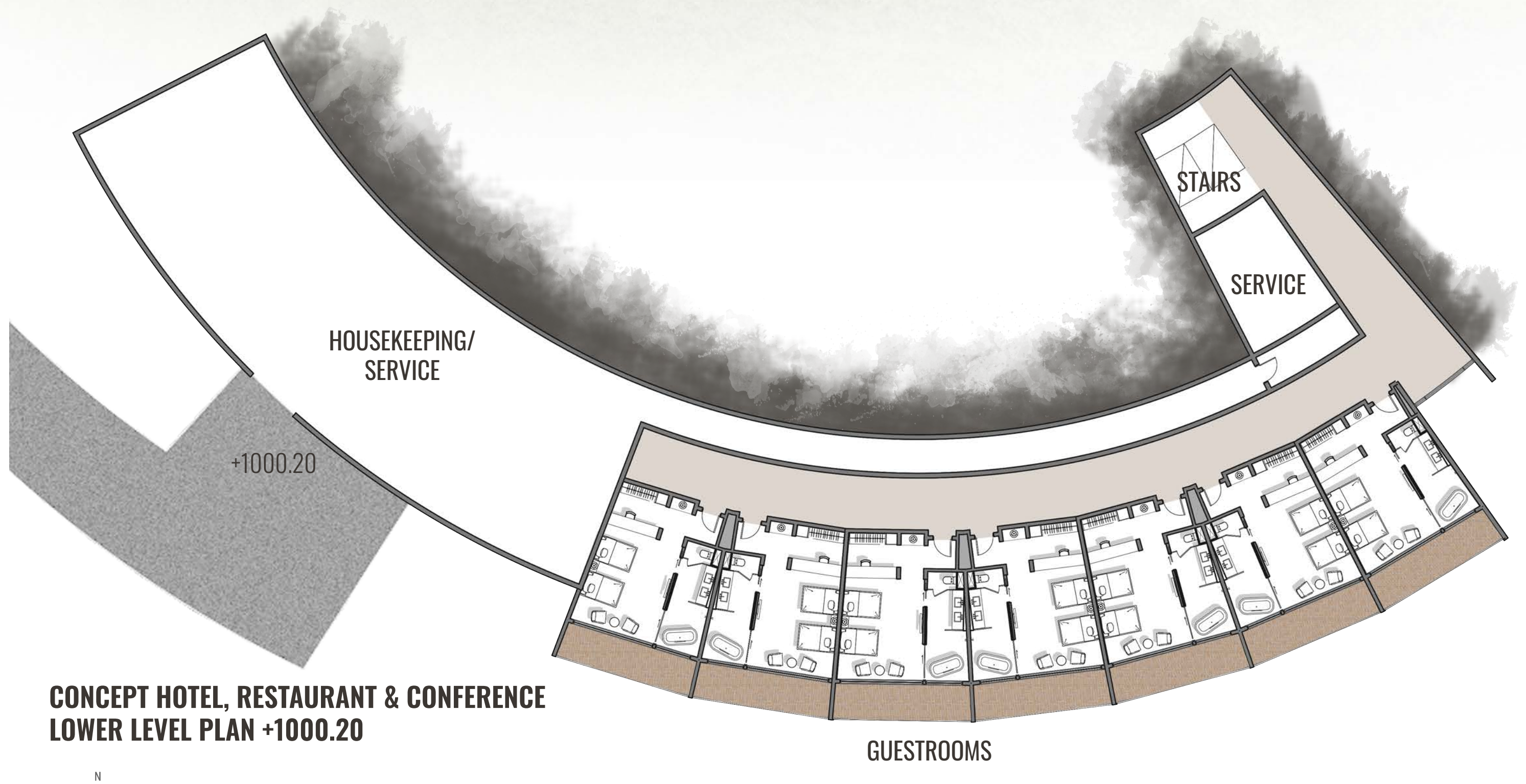


AUDITORIUM BUILDING - NORTH ELEVATION



AUDITORIUM BUILDING - SECTION B-B

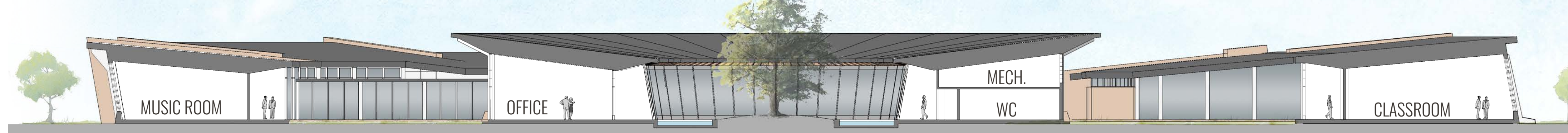
CONCEPT HOTEL, RESTAURANT & CONFERENCE MAIN LEVEL PLAN +1004.00



CONCEPT HOTEL, RESTAURANT & CONFERENCE LOWER LEVEL PLAN +1000.20



EDUCATION BUILDING - NORTH ELEVATION



EDUCATION BUILDING - SECTION A-A

