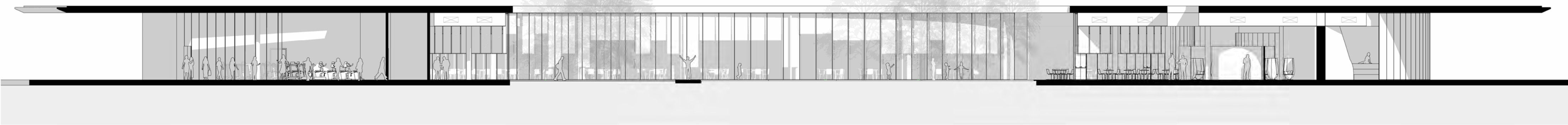


The project we are presenting for the COAF SMART Campus Armavir wants to embody the image of a contemporary learning village in full harmonic balance with the natural site. (holistic approach). An idea that apparently closes in on itself like a small fortified city, offering a recognizable and unitary overview in all its organic and symbolic value. A Campus that praises concentration, but at the same time open and dynamic, representing a modern and welcoming place, where future generations can recognize themselves and find the passion for learning in three forms: head (cognitive), heart (effective) and hand (practice). The project, surrounded by a large body of water (a fundamental element for holistic balance), as well as a castle from its moat, was located in the flattest area of the site, not only to avoid large movements of land that can affect costs, but also to make it easily accessible to all and without architectural barriers; For this reason, the building is divided into a single large single-level building, characterized by a large central space. The Campus with a simple and universal design, accessible and inclusive for everyone with some planned functions, such as the gym, auditorium, library, restaurant and event center have been positioned to be accessible even at different times. The didactic environments have been conceived to be autonomous, flexible, large and bright. All the required standards on differentiated accessibility, safety, flexibility, maintenance, plant engineering and energy are met.

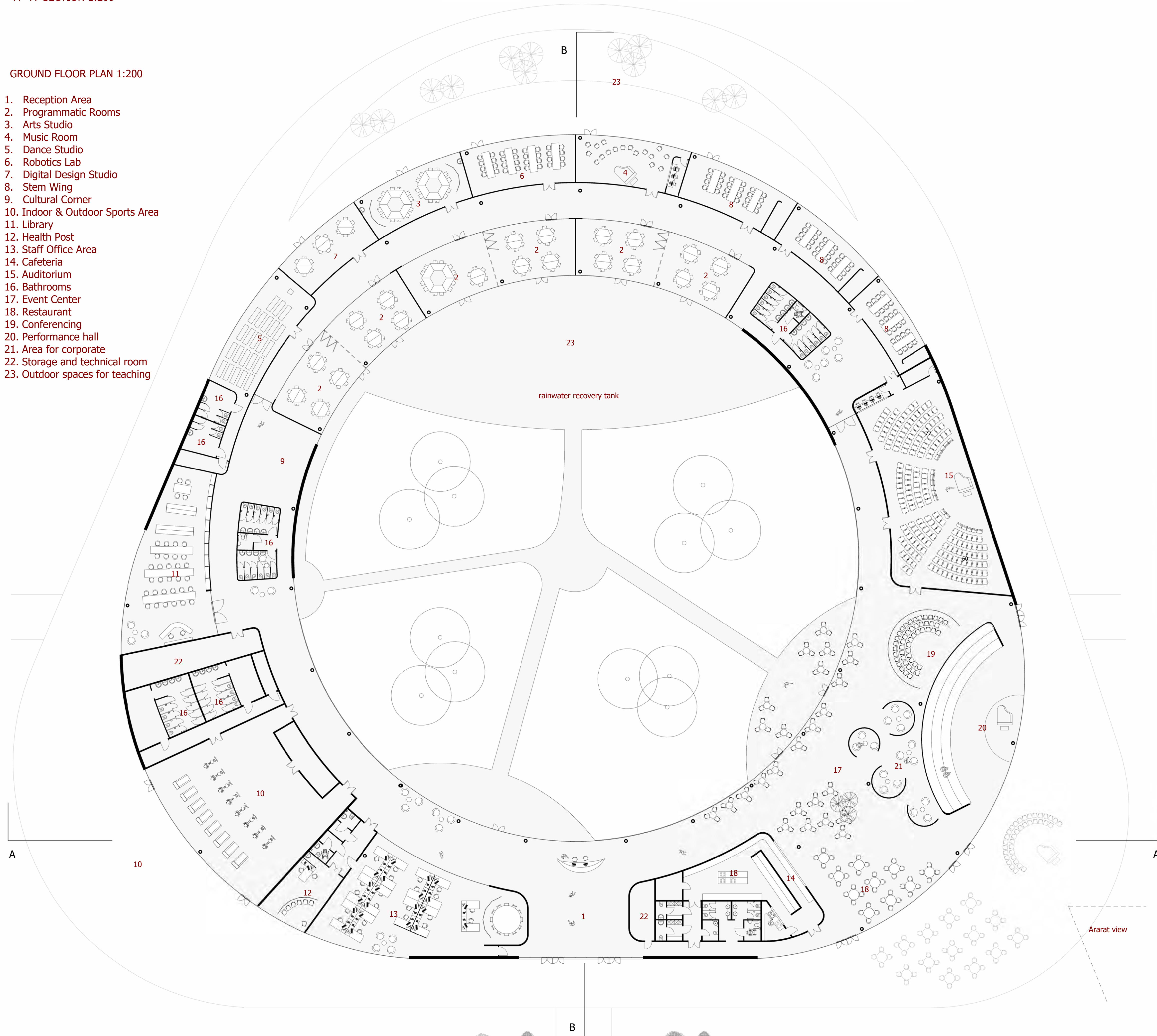




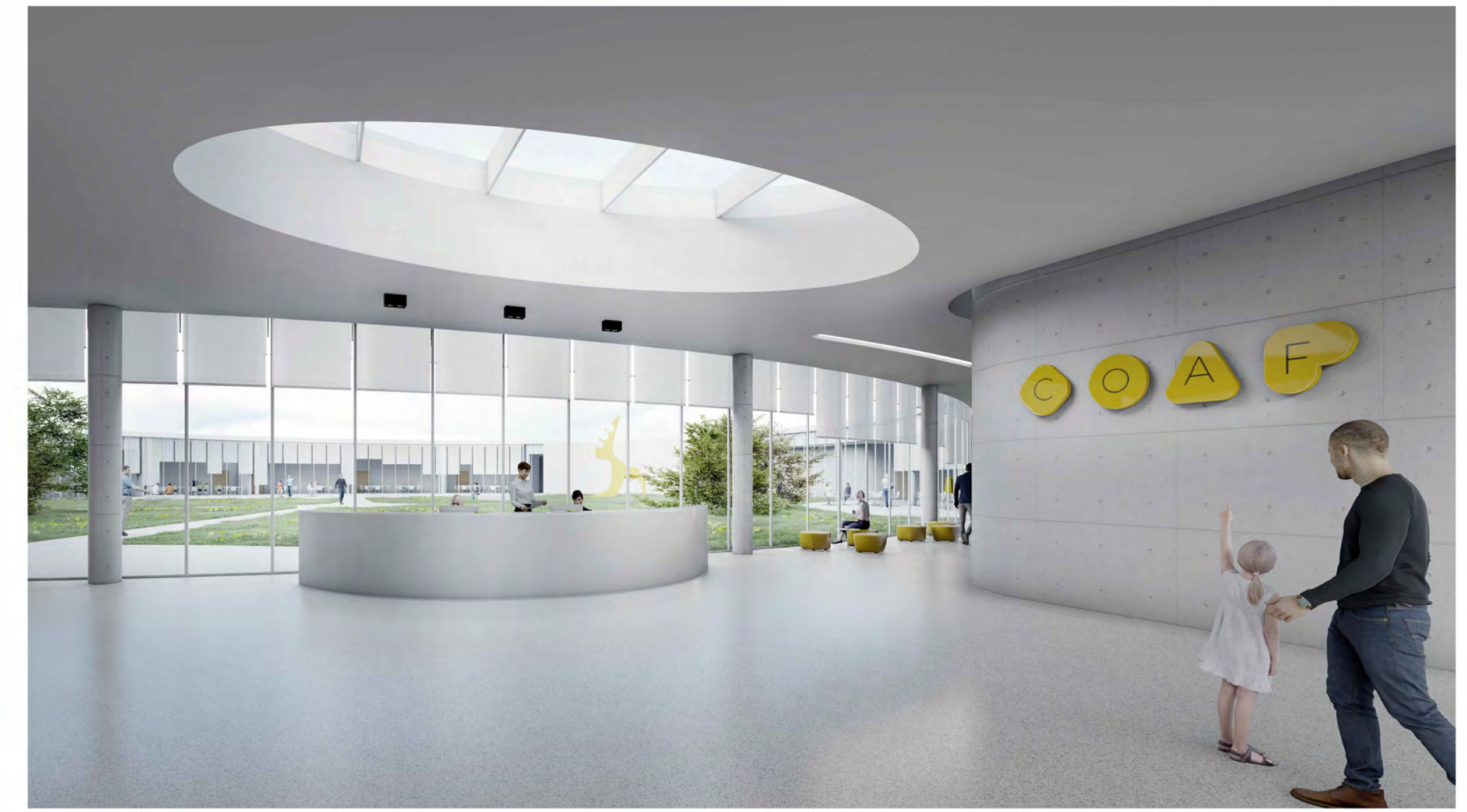
A - A SECTION 1:200

GROUND FLOOR PLAN 1:200

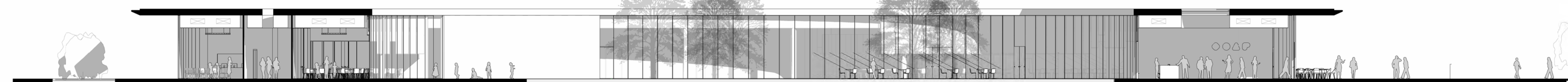
- 1. Reception Area
- 2. Programmatic Rooms
- 3. Arts Studio
- 4. Music Room
- 5. Dance Studio
- 6. Robotics Lab
- 7. Digital Design Studio
- 8. Stem Wing
- 9. Cultural Corner
- 10. Indoor & Outdoor Sports Area
- 11. Library
- 12. Health Post
- 13. Staff Office Area
- 14. Cafeteria
- 15. Auditorium
- 16. Bathrooms
- 17. Event Center
- 18. Restaurant
- 19. Conferencing
- 20. Performance hall
- 21. Area for corporate
- 22. Storage and technical room
- 23. Outdoor spaces for teaching



Ararat view

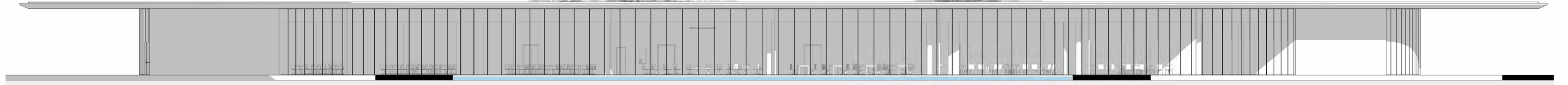


15122005

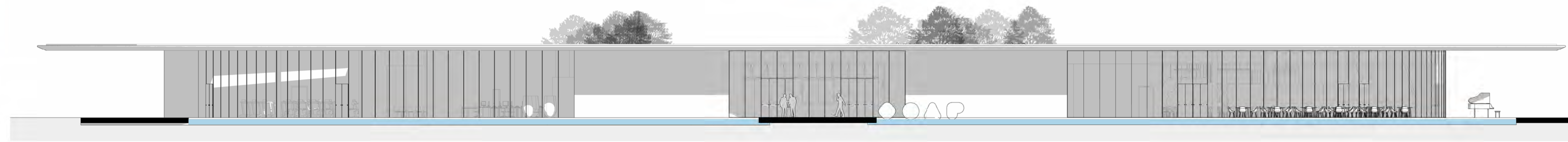
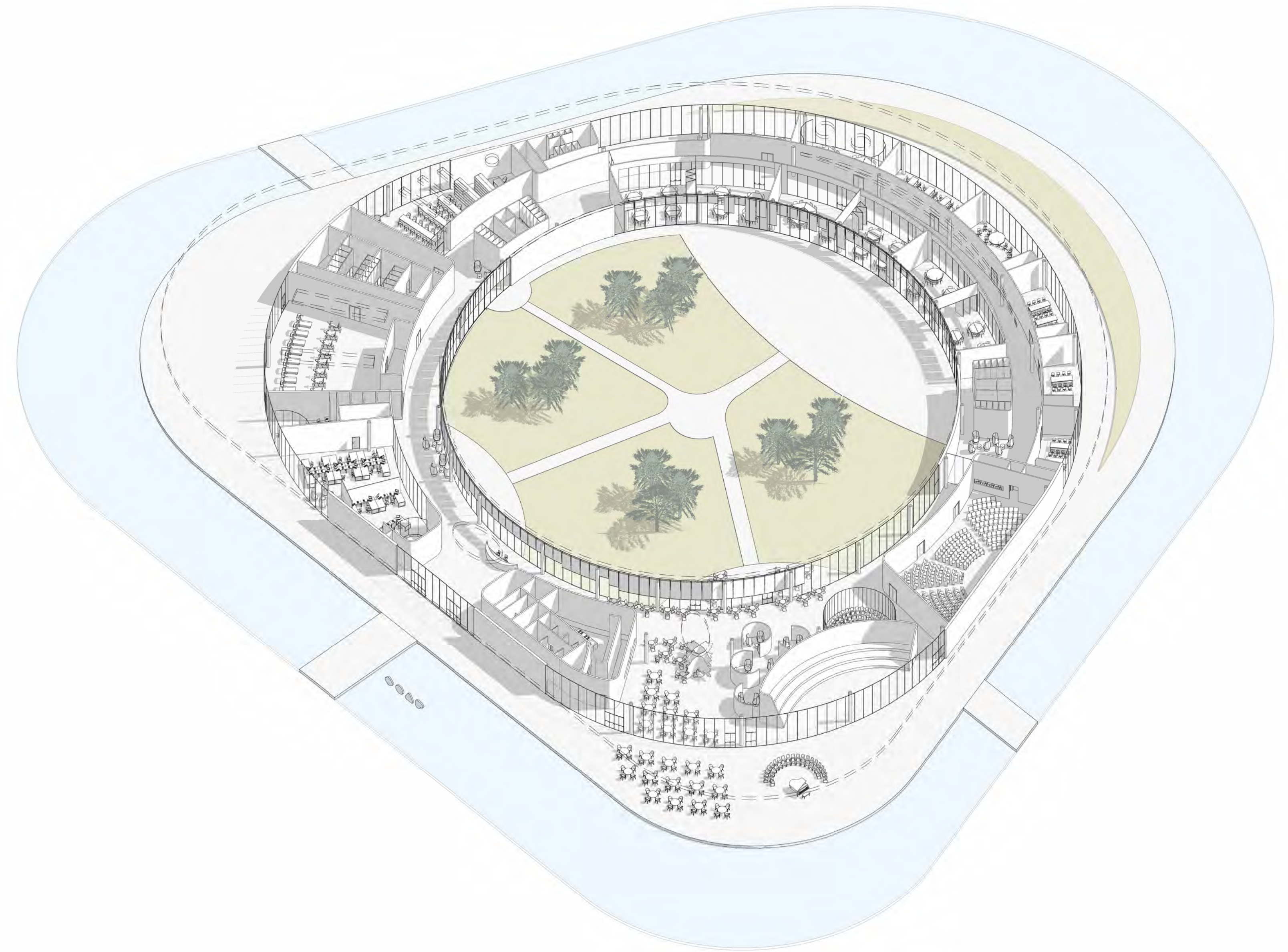


B - B SECTION 1:200





North Front 1:200



South Front 1:200

