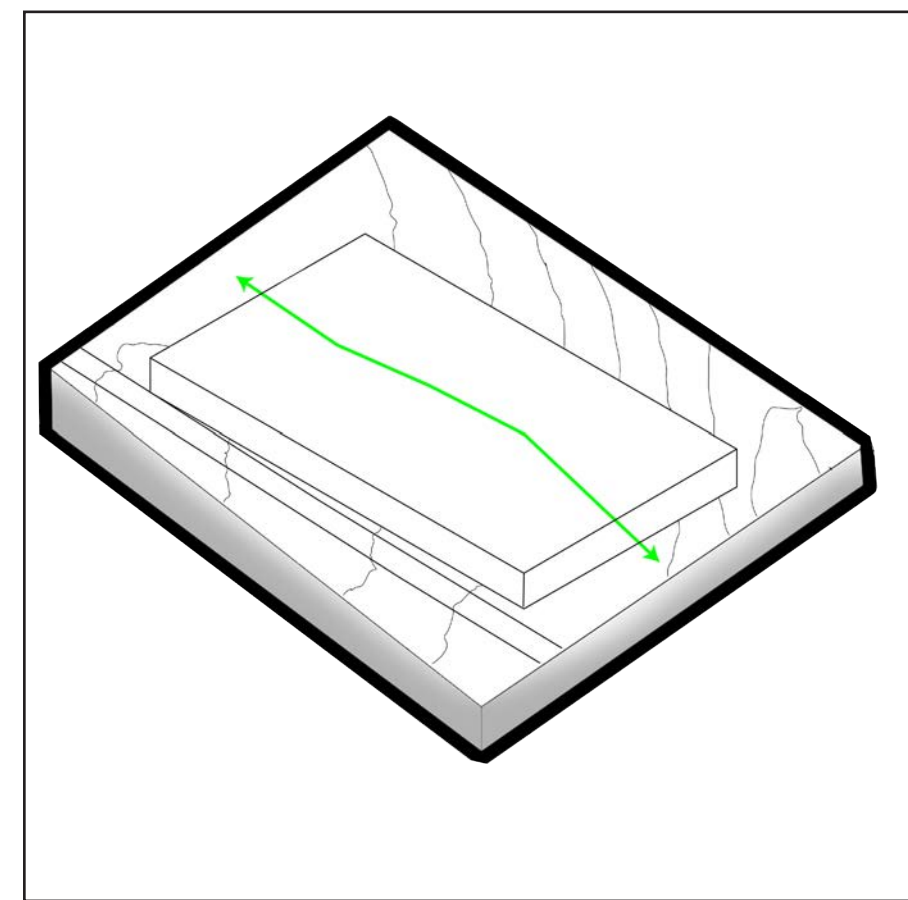


The COAF SMART

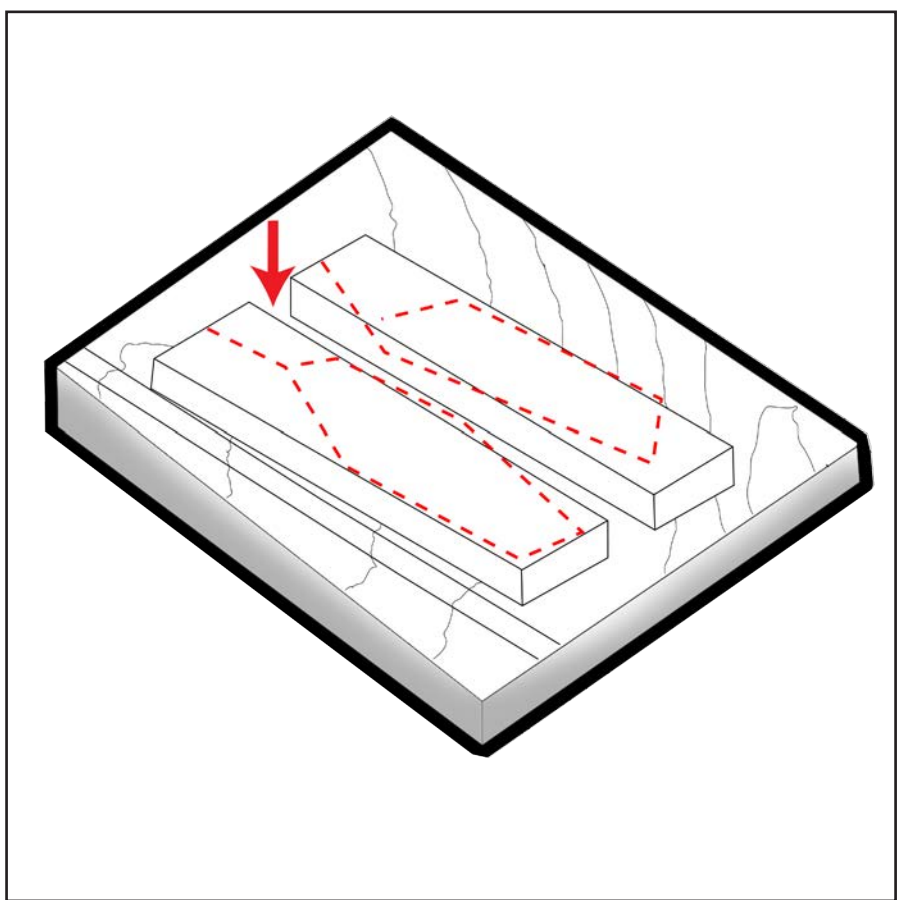
The COAF SMART Campus in Armavir is a cluster of technologically sophisticated educational, cultural, and sports facilities as well as social enterprises. The entire concept has been designed to enhance the academic and professional capabilities of rural citizens while also supporting the competitiveness and sustainability of local economies. The COAF SMART Center in Lori has been a powerful means of promoting the skills of a new generation of rural children in multiple disciplines, including the arts, athletics, engineering, entrepreneurship, languages, and music. On the outskirts of Myasnikyan village, the location of the SMART Campus in Armavir is captivating with its sweeping view over Mounts Ararat and Aragats, surrounded by 90 hectares of agricultural land and vineyards.

In order to perfectly capture the essence of the new campus in Armavir and its compatibility with the surrounding area, extensive research had to be conducted both in the plot and its landscape, as well as in the COAF SMART Center in Lori, which was to be used as a reference.

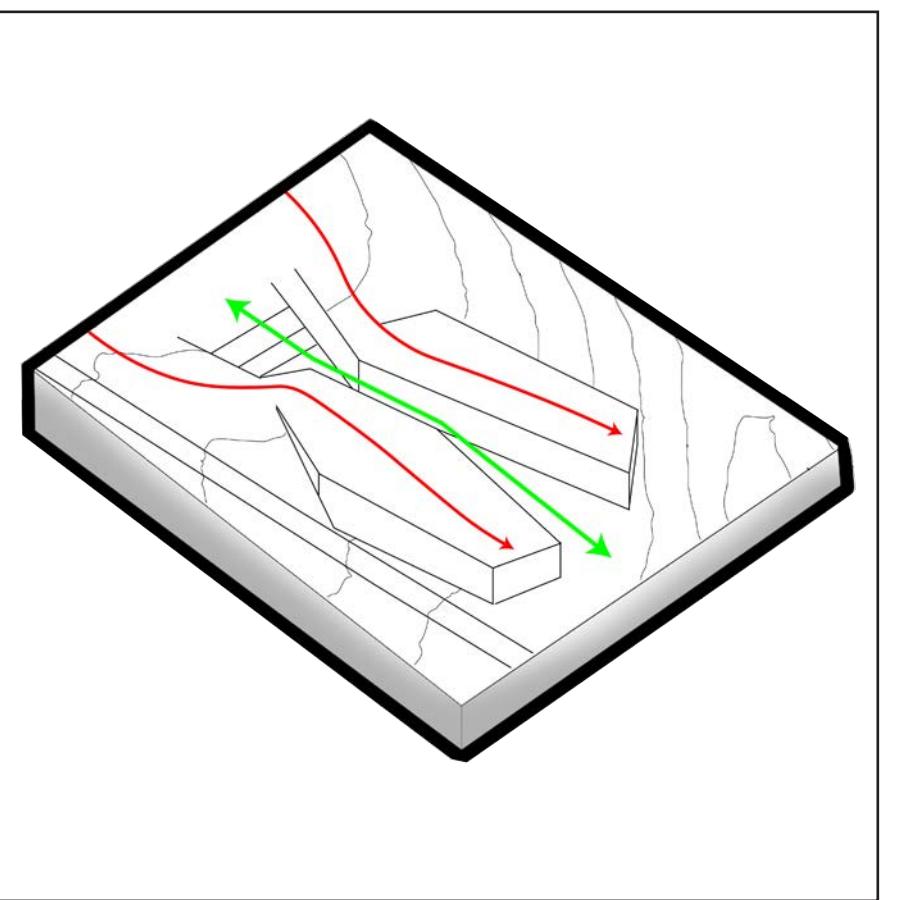
The research of the area and its surroundings lead to an incentive to position the campus close to one of the main roads. This allowed for immediate accessibility from both Myasnikyan, which has a train station, and Karas Wines. From this point, considering that more than 30% of the entire area had to be allocated to the campus and agricultural activities, the COAF SMART Campus was positioned in the middle, acting as the central control point of the whole plot. Another factor that contributed to this decision was the breathtaking view that Ararat and Aragats mountains could offer the campus, provided the appropriate conditions. That is why the section chosen acts as the centre of the area and enjoys a position at an appropriate elevation provided by the landscape, taking full advantage of the captivating view.



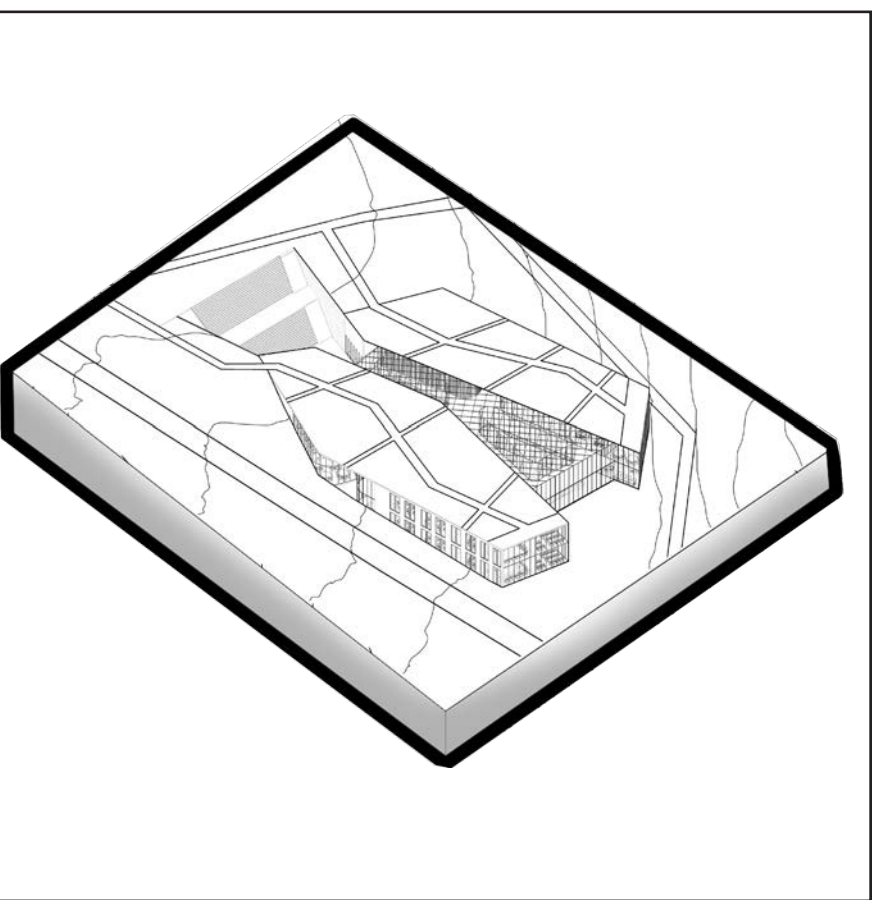
Following the natural elevation of the Landscape



Cutting the volume according to the countour line



Orienting the volume towards the Ararat & Aragats

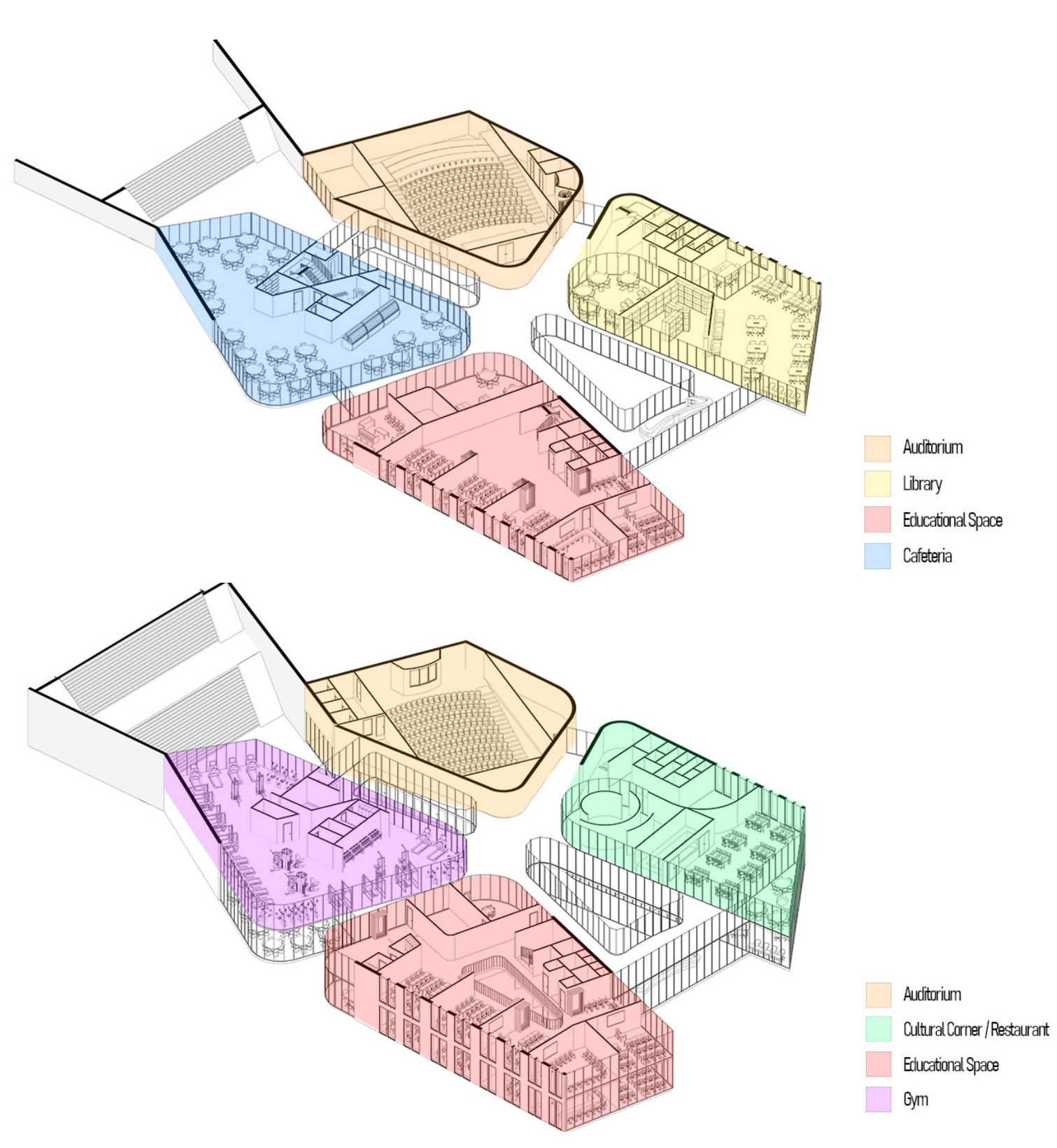


Final Proposal





The research on the architectural language of COAF SMART Centre in Lori revealed the strong connection between the building and the landscape, with it following the natural elevation of the landscape and at points going underground. The landscape around the area chosen for the SMART COAF Campus allows it to have similar qualities. Thus, the building is sunken in the highest spot of the landscape and as it progresses it slowly emerges from within the slope, looking like an eruption of the landscape itself.



- 1) Auditorium
- 2) Control Room
- 3) Back Stage Room
- 4) Toilet
- 5) Information Room
- 6) Technical Room
- 7) Working Room
- 8) Library
- 9) Book Shelves Area
- 10) Computer Room
- 11) Cafeteria
- 12) Kitchen
- 13) Staff Office Lounge
- 14) Resource Room
- 15) Conference Room
- 16) Stem Wing (Biology)

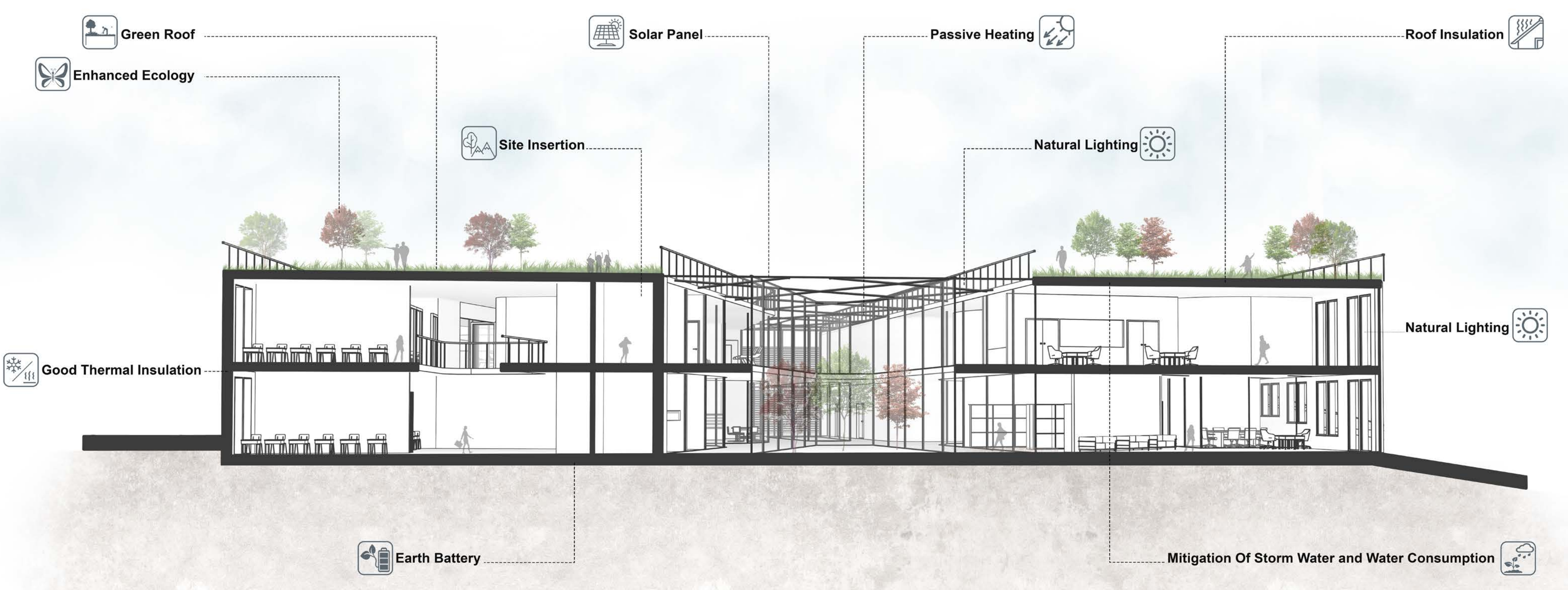


Ground Floor Level
1.200

- 1) Auditorium
- 2) Control Room
- 3) Back Stage Room
- 4) Toilet
- 5) Closet Room
- 6) Technical Room
- 7) Cultural Corner(Exhibition)
- 8) Restuarant
- 9) Kitchen
- 10) Outdoor Dining Area
- 11) Meditation Area
- 12) Gym
- 13) Changing Room
- 14) Health Post(First-Aid Area)
- 15) Educational Room
- 16) Dance Studio
- 17) Spanish Calss



First Floor Level
1.200



At the section where the campus is completely submerged in the landscape, the rooftop of the building acts a continuation of the landscape and allows people to walk on top of it, navigating towards one of its two edges facing Ararat and Aragats mountains. Along with the edges facing the view, it is important to note that they were also designed considering the natural elevation of the ground in order to create seamless transitions. The building has two entrances, one from the highest section, which also leads to the rooftop, and the main entrance from the lower section, which fully exposes the dimensions. In addition for the whole site plan, we just create the main path all along the site according to the topography in order to have easy access both for pedestrian and also vehicles. Also we spread the greenhouses in different part of the site, so when people walking or riding the bicycle they can easily reach to greenhouses and spend some time inside of them. Also we devote some parts of area to agricultural field and orchard with direct access by main path.

