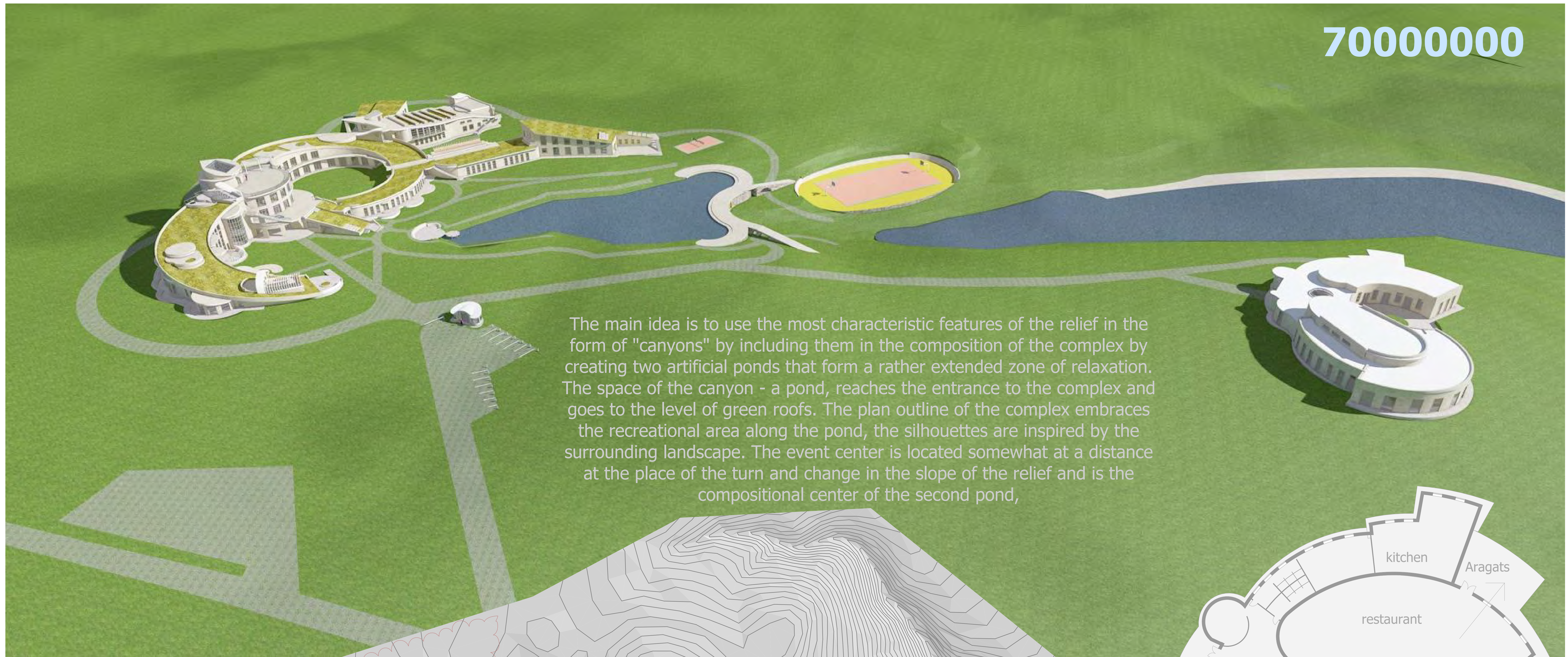
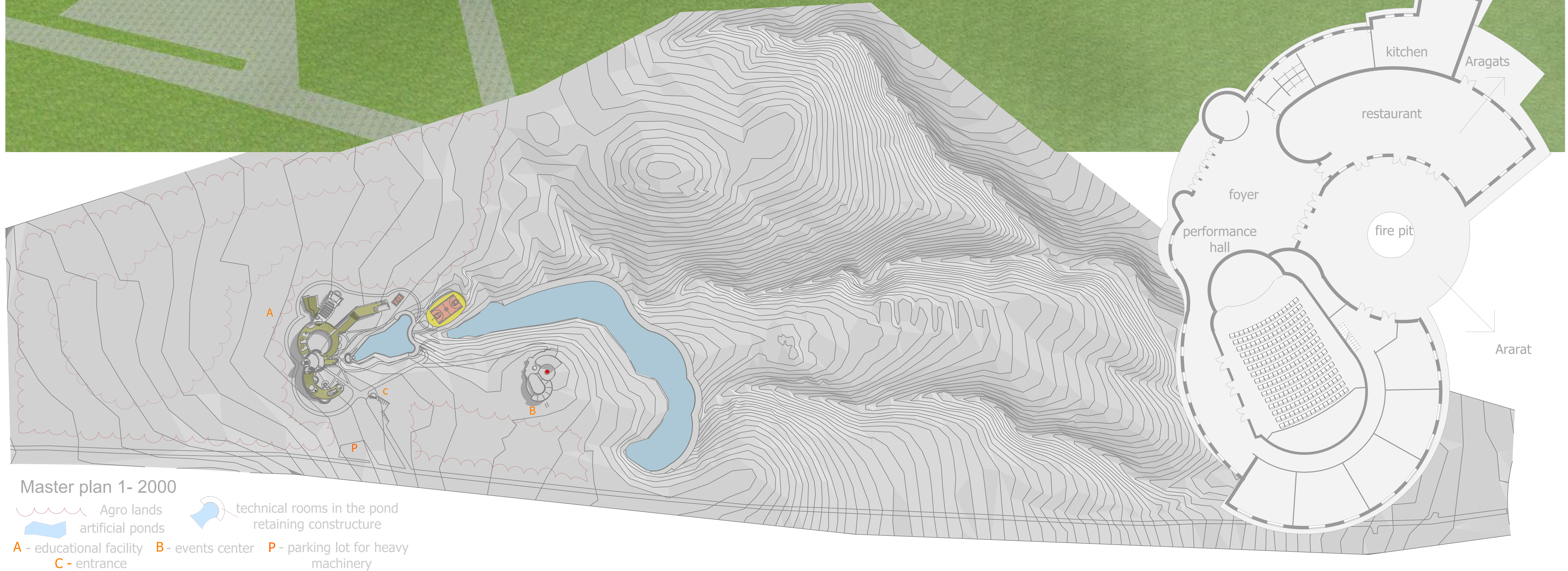


70000000



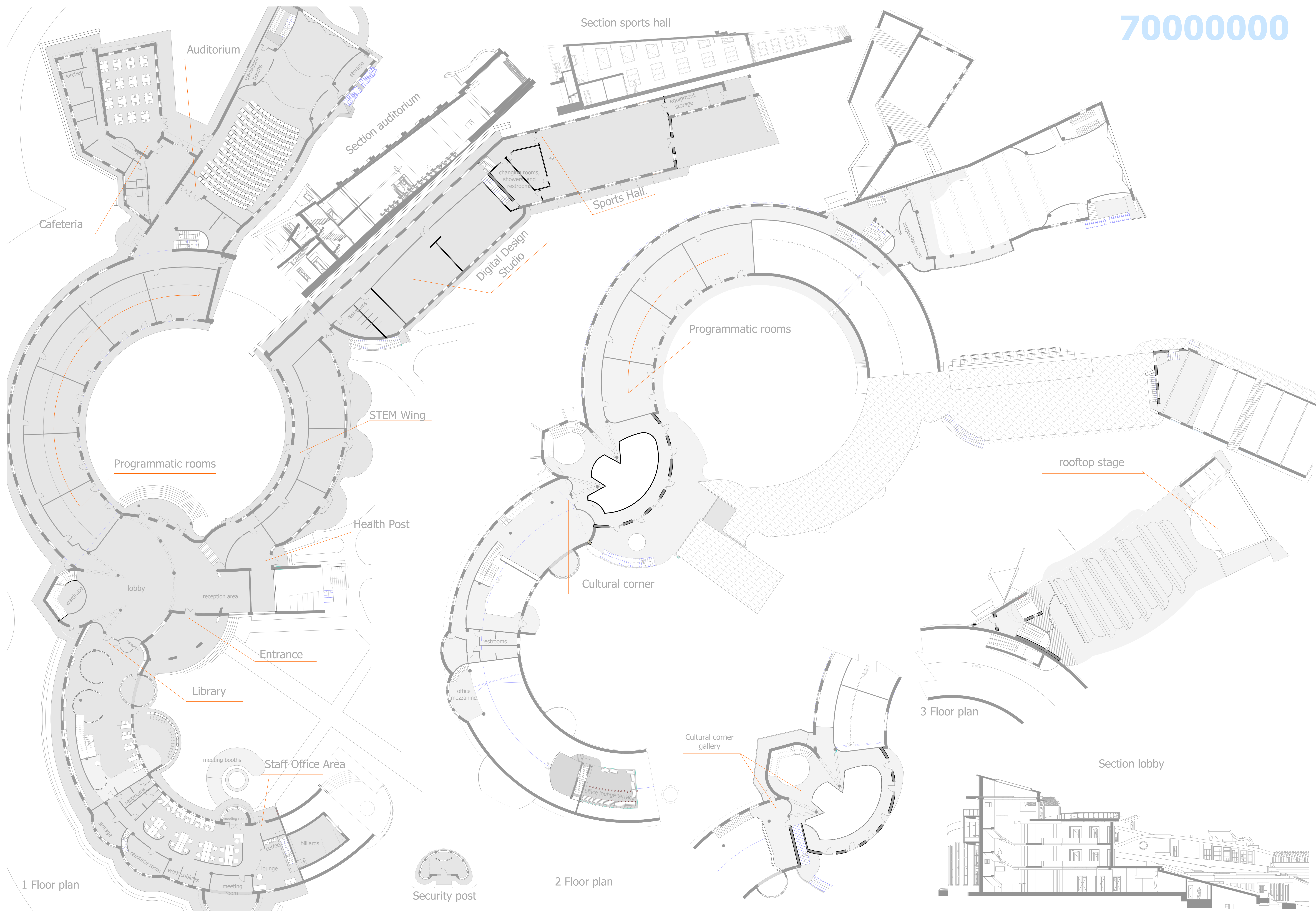
The main idea is to use the most characteristic features of the relief in the form of "canyons" by including them in the composition of the complex by creating two artificial ponds that form a rather extended zone of relaxation. The space of the canyon - a pond, reaches the entrance to the complex and goes to the level of green roofs. The plan outline of the complex embraces the recreational area along the pond, the silhouettes are inspired by the surrounding landscape. The event center is located somewhat at a distance at the place of the turn and change in the slope of the relief and is the compositional center of the second pond,



Master plan 1- 2000

- Agro lands
- artificial ponds
- technical rooms in the pond
- retaining constructure
- A - educational facility
- B - events center
- P - parking lot for heavy machinery
- C - entrance

70000000



Auditorium

Cafeteria

Section auditorium

Section sports hall

Sports Hall

Digital Design Studio

Programmatic rooms

STEM Wing

Programmatic rooms

Health Post

Cultural corner

rooftop stage

lobby

reception area

Entrance

Library

Staff Office Area

restrooms

office mezzanine

Cultural corner gallery

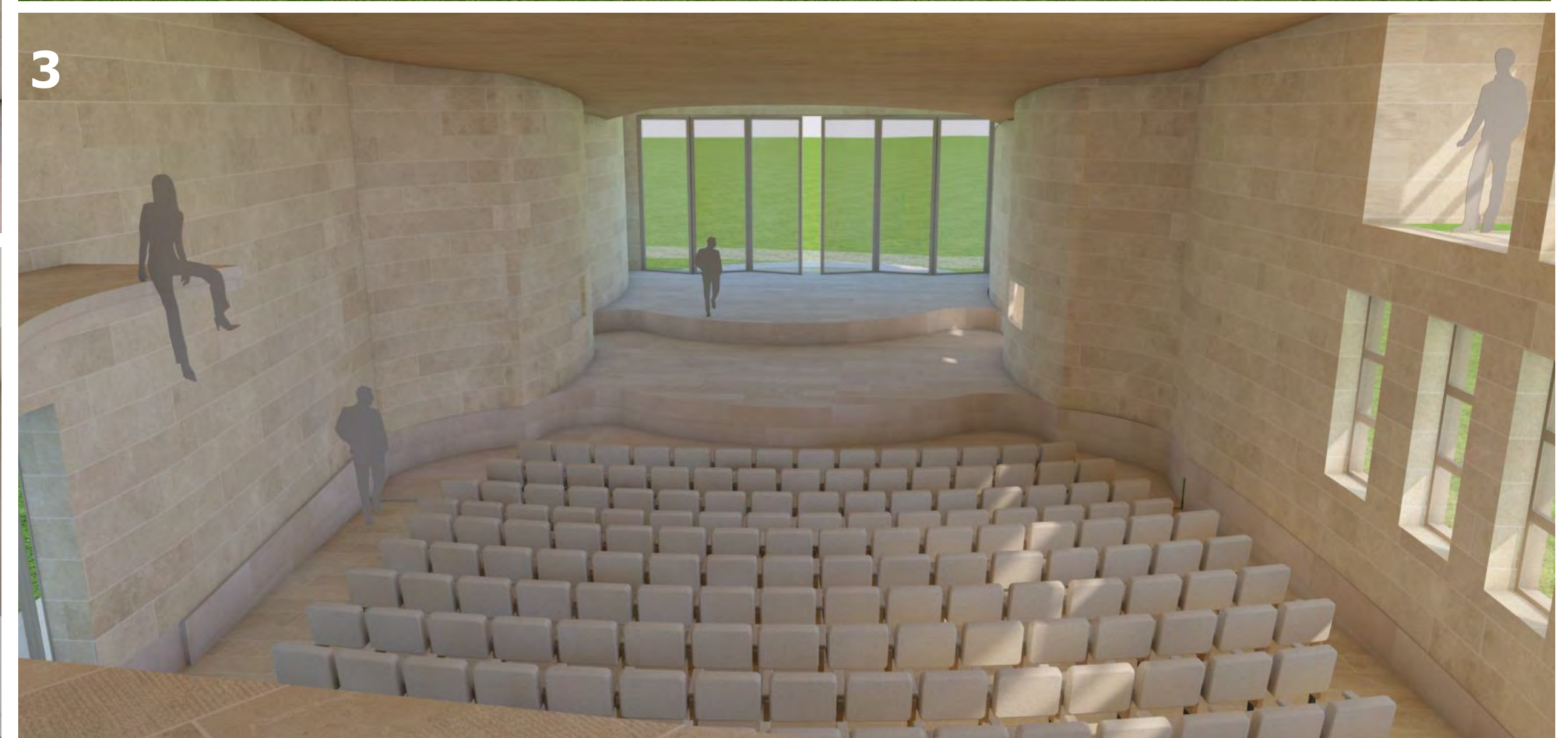
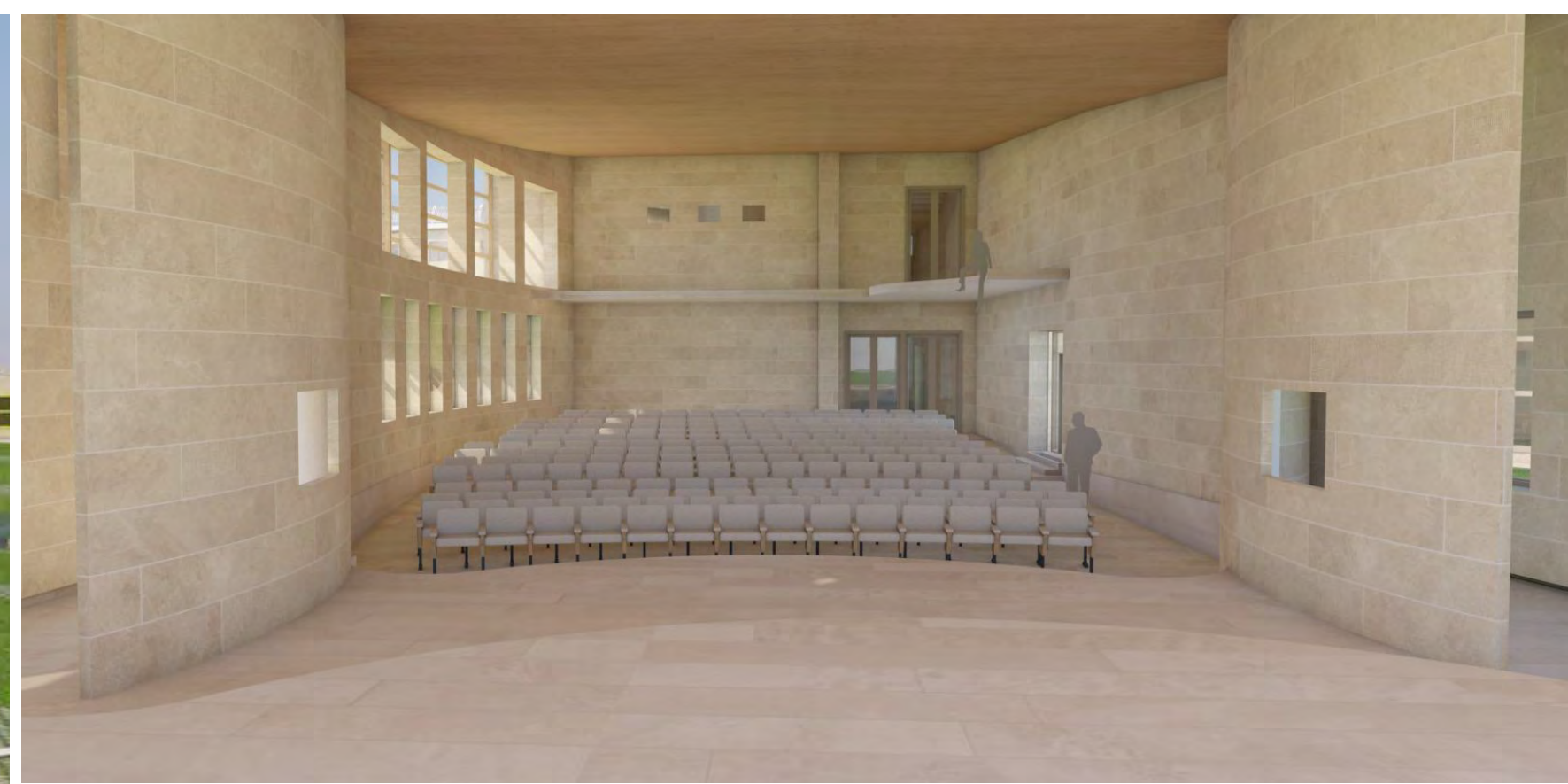
3 Floor plan

1 Floor plan

Security post

2 Floor plan

Section lobby



3 - auditorium overlooking the Aragats

