

COAF SMART CAMPUS

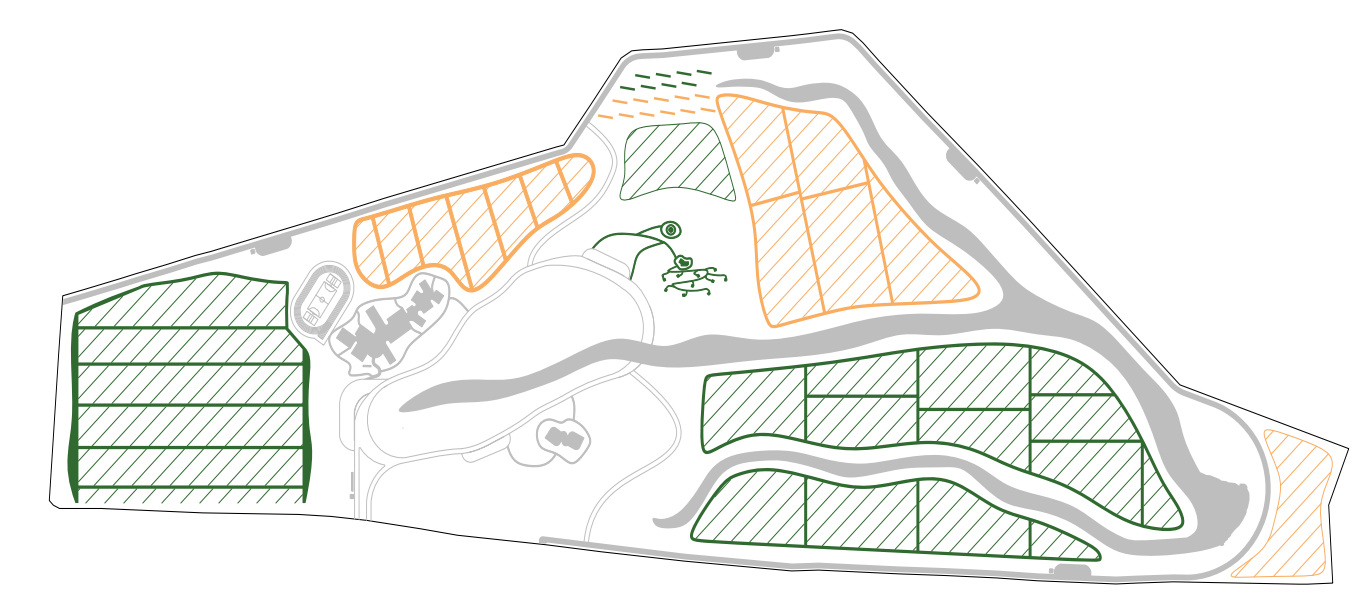
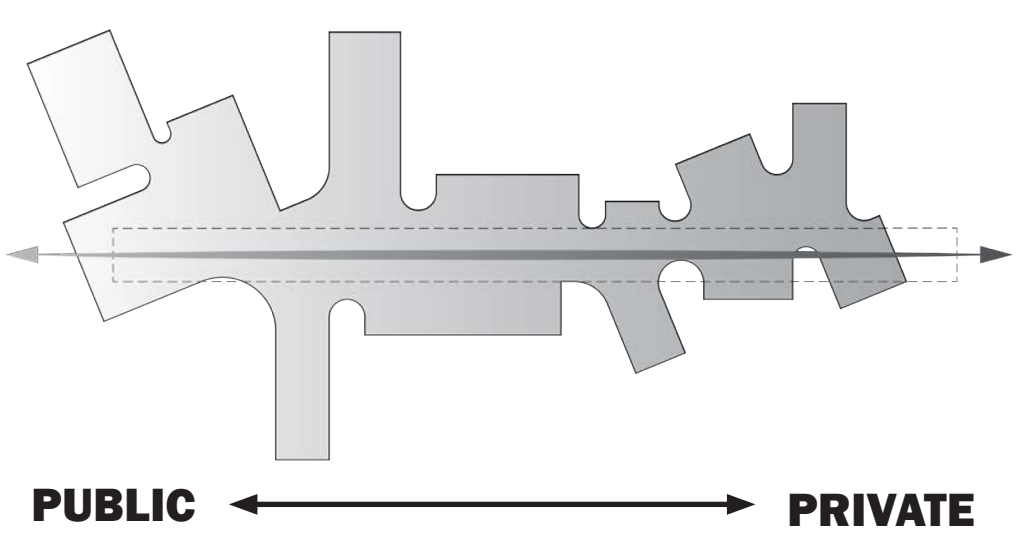
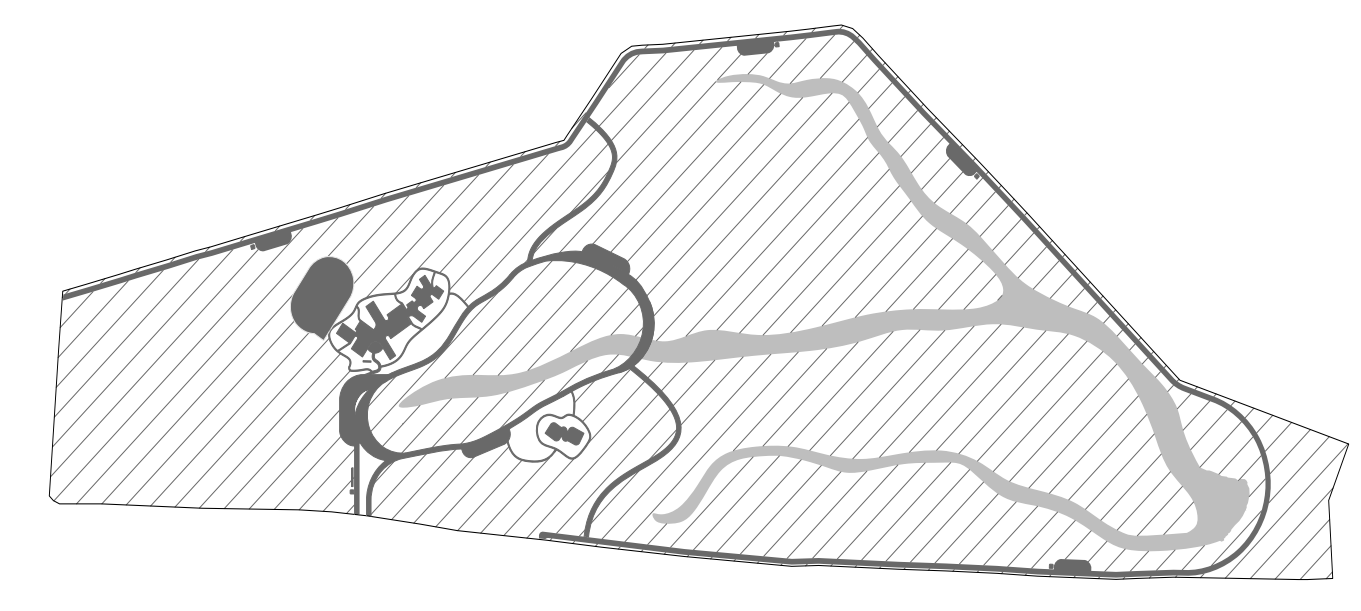
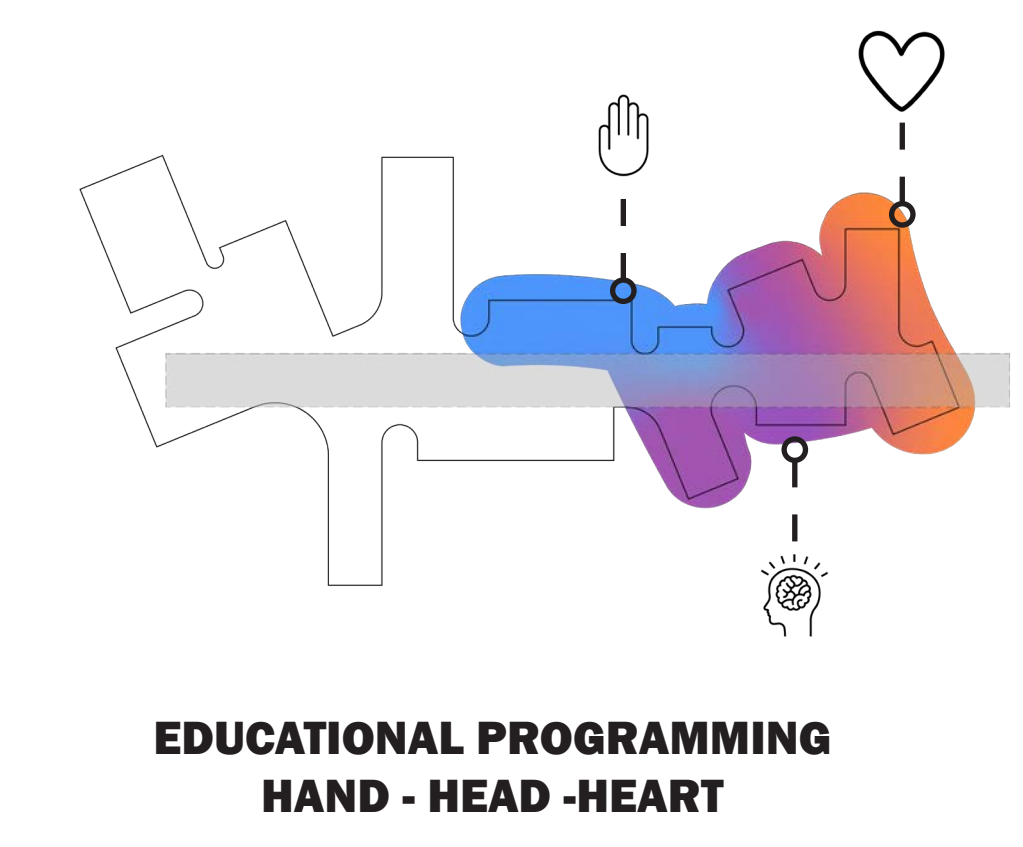
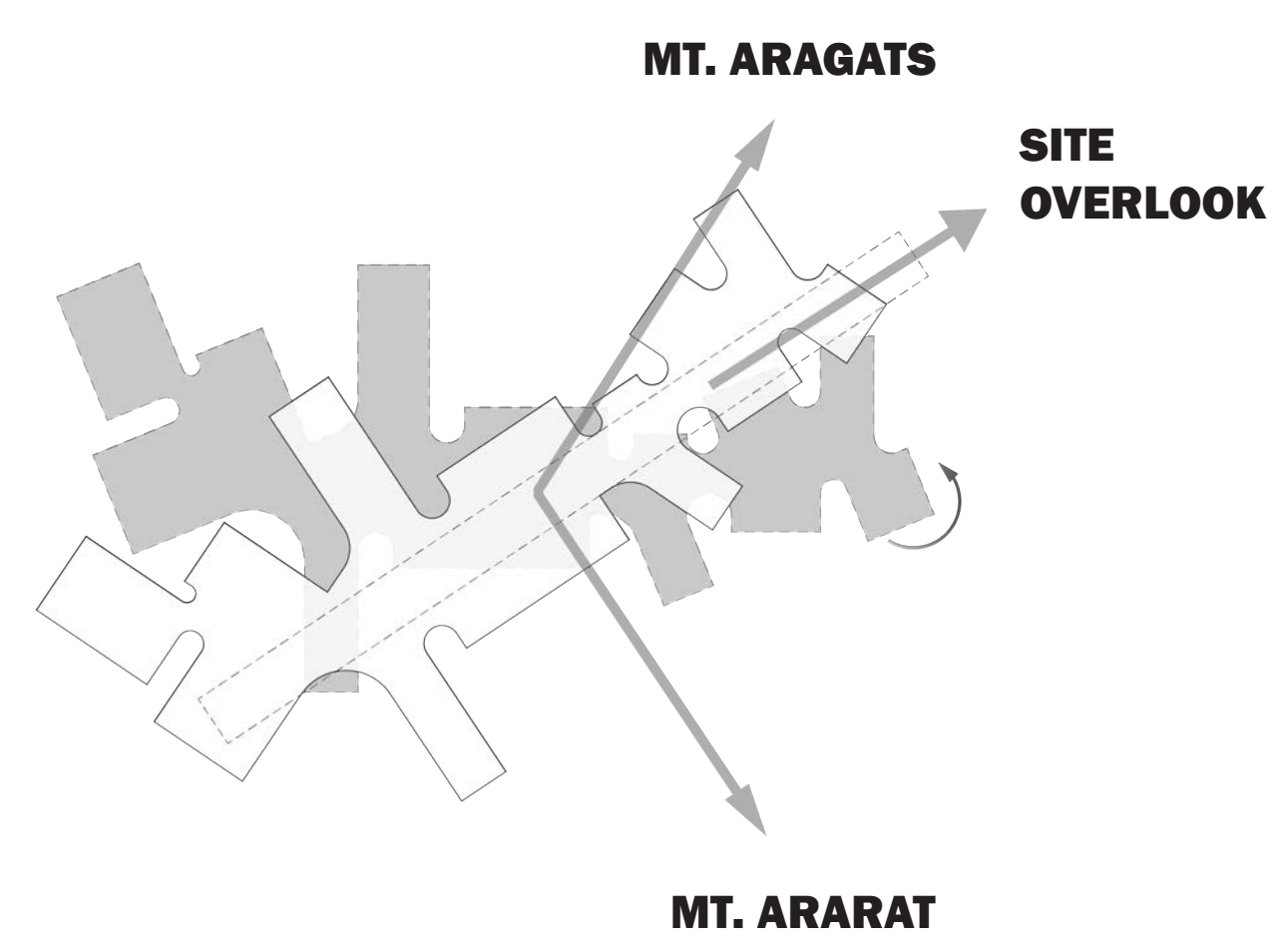
The site is located in Armavir province of Armenia, on a barren land, surrounded by emptiness, accompanied with Mount Ararat to the south, and Mount Aragats to the north. The future campus will not only provide a high tech, innovative educational facility, but similar to previous COAF's project, we believe that it will eventually become a strong backbone, supporting nearby villages. We see the concept of Hand-Heart-Mind, in a larger scheme, could be understood as a living organism of Economy-Culture-Science/Ecology. With that idea, the project suggests a connected loop of circulation to all the important checkpoints of the site in the center, whilst pushing the agricultural land to the outside.

Site: It was clear to us at the beginning to use the topography of the site for the strength of specific agricultural focus. The Orchard claims the more even land on the east, giving a buffer to the campus as people travel from Highway 17. The steeper part of the site, flowing toward the east suggests the use for a water reservoir. Along the slope, we will have the vineyard run north-south, catching quality sunlight, using the topography to block strong winds.

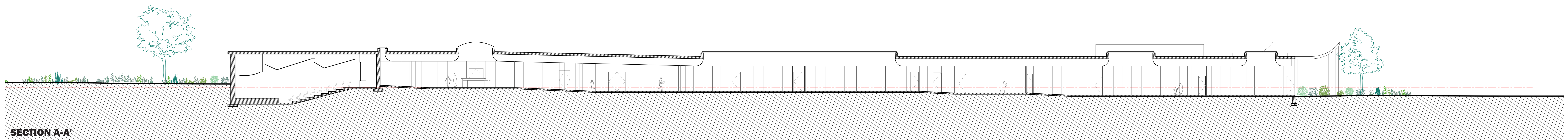
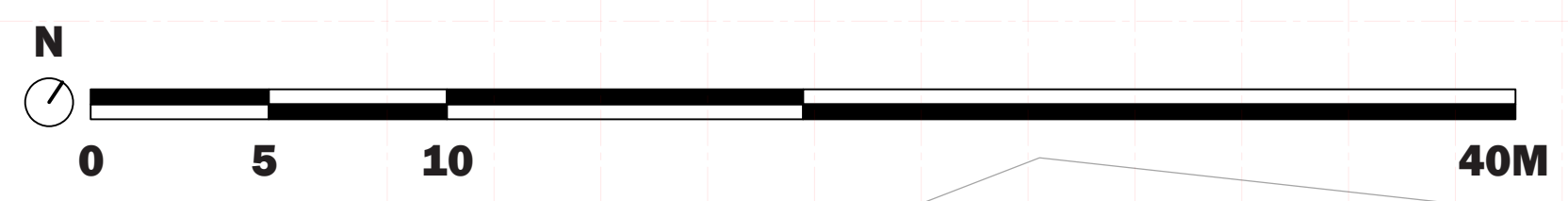
Educational Facility: The main building is situated at one of the high places of the site, giving it the advantage of overlooking the land, while providing clear views to the mountains. As one enters the site, they will see the building right away, subconsciously understanding that it is the most important, and iconic building of the campus. The visitors can freely explore the building once they have passed the main reception lobby of the building. From east to west, the program moves from public (auditorium, cafe, sport hall) to private spaces (offices, classrooms). All of the programs are all connected on one main "indoor avenue", which will act as the main circulation, as well as unofficial gathering space. In the west, the program's layout represents the connection between hand-heart-mind. They are linked in groups, based on program type, considering privacy, light, noise level...

Campus: Our proposal suggests a three-phase intervention, with the original design brief as a strong starting point. The empty site, without obstruction surrounding it, is perfect for agricultural development. As the first phase, the soil will need to be reconditioned for vineyard and orchard growth, while the educational facility and event center are being built. As the years follow, the land will grow outwards, claiming more land for farming. In addition, there is a possibility to build a cultural center, watch tower, and cabin concept hotel for future development, linking the campus with the local community, as well as visitors.

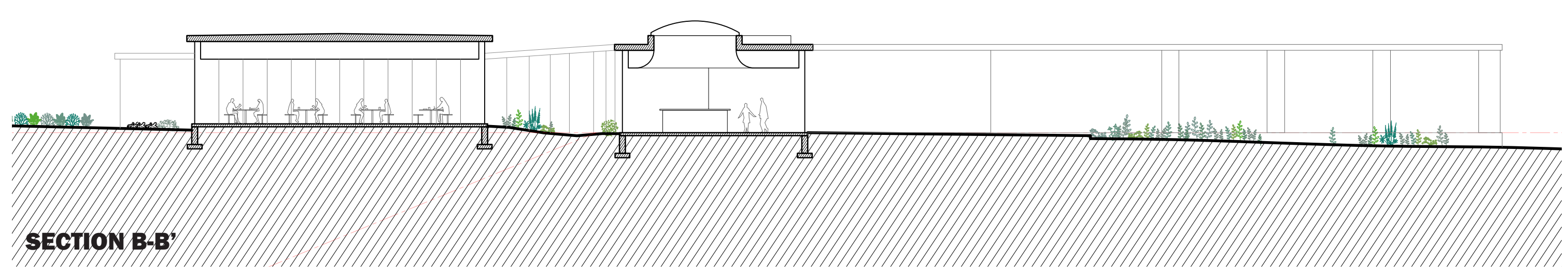
All in all, our proposal emphasizes the smart campus in the near future, and a further look into the possibility to bring jobs, activities, and connections to the collective community of Armavir.



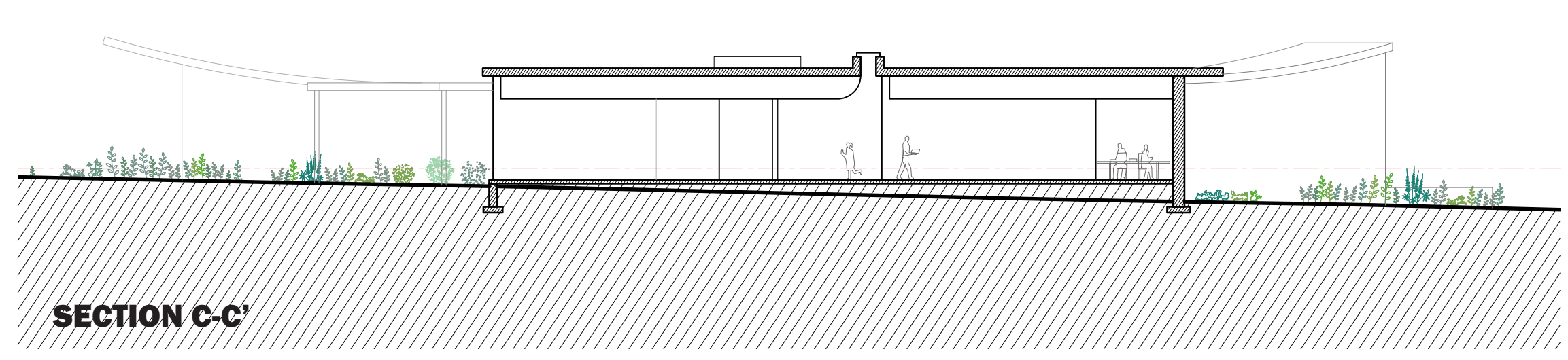
- 1. MAIN ENTRANCE PLAZA
- 2. MAIN LOBBY
- 3. AUDITORIUM
- 4. CAFETERIA
- 5. WEIGHT-LIFTING / CARDIO ROOM
- 6. MAIN SPORTING HALL
- 7. CHANGING ROOM
- 8. STAFF LOUNGE
- 9. STAFF MEETING ROOMS
- 10. STAFF OFFICE AREA
- 11. HEALTH POST
- 12. STEM WING
- 13. LIBRARY
- 14. ENTREPRENEURSHIP ROOM (MULTI-PURPOSE)
- 15. LANGUAGE ROOM (MULTI-PURPOSE)
- 16. CULTURE CORNER GALLERY (MULTI-PURPOSE)
- 17. DANCE STUDIO
- 18. CHANGING ROOM
- 19. MUSIC ROOM
- 20. RECORDING STUDIO
- 21. ARTS STUDIO
- 22. ART GALLERY
- 23. ROBOTICS LAB
- 24. DEMONSTRATION AREA
- 25. DIGITAL DESIGN STUDIO
- 26. DIGITAL WORKSHOP



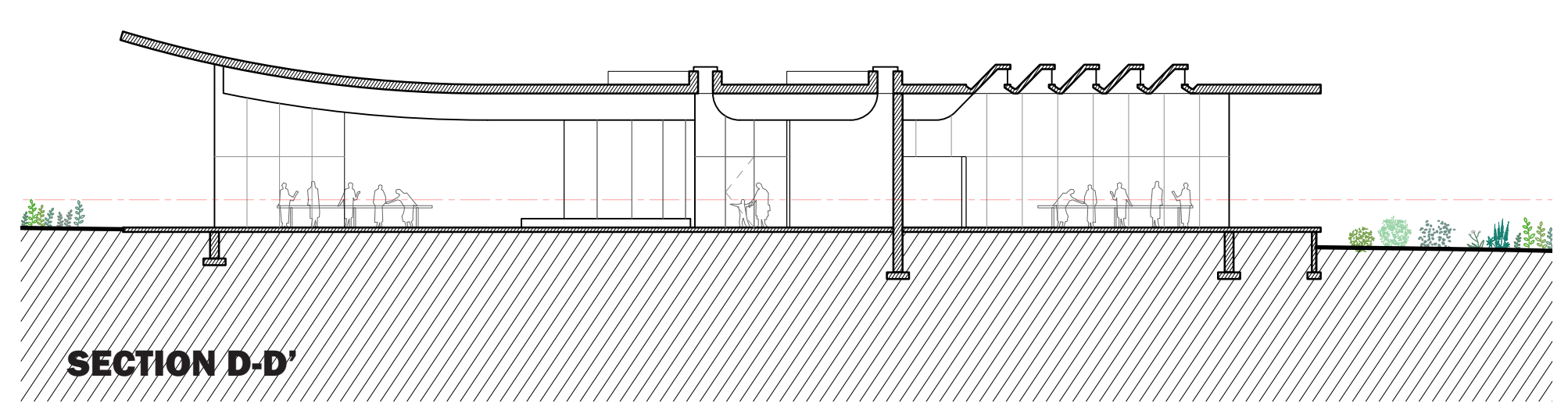
SECTION A-A'



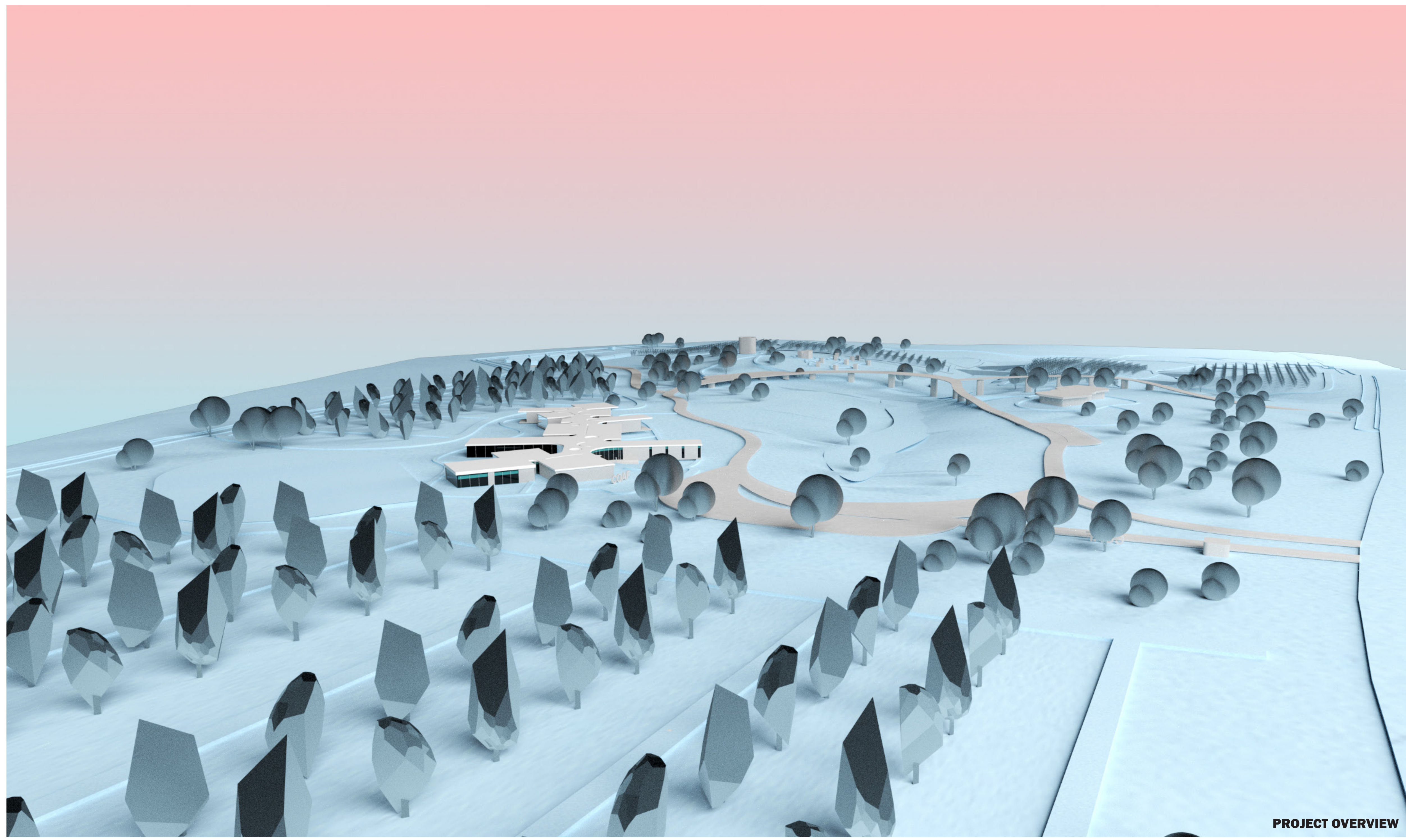
SECTION B-B'



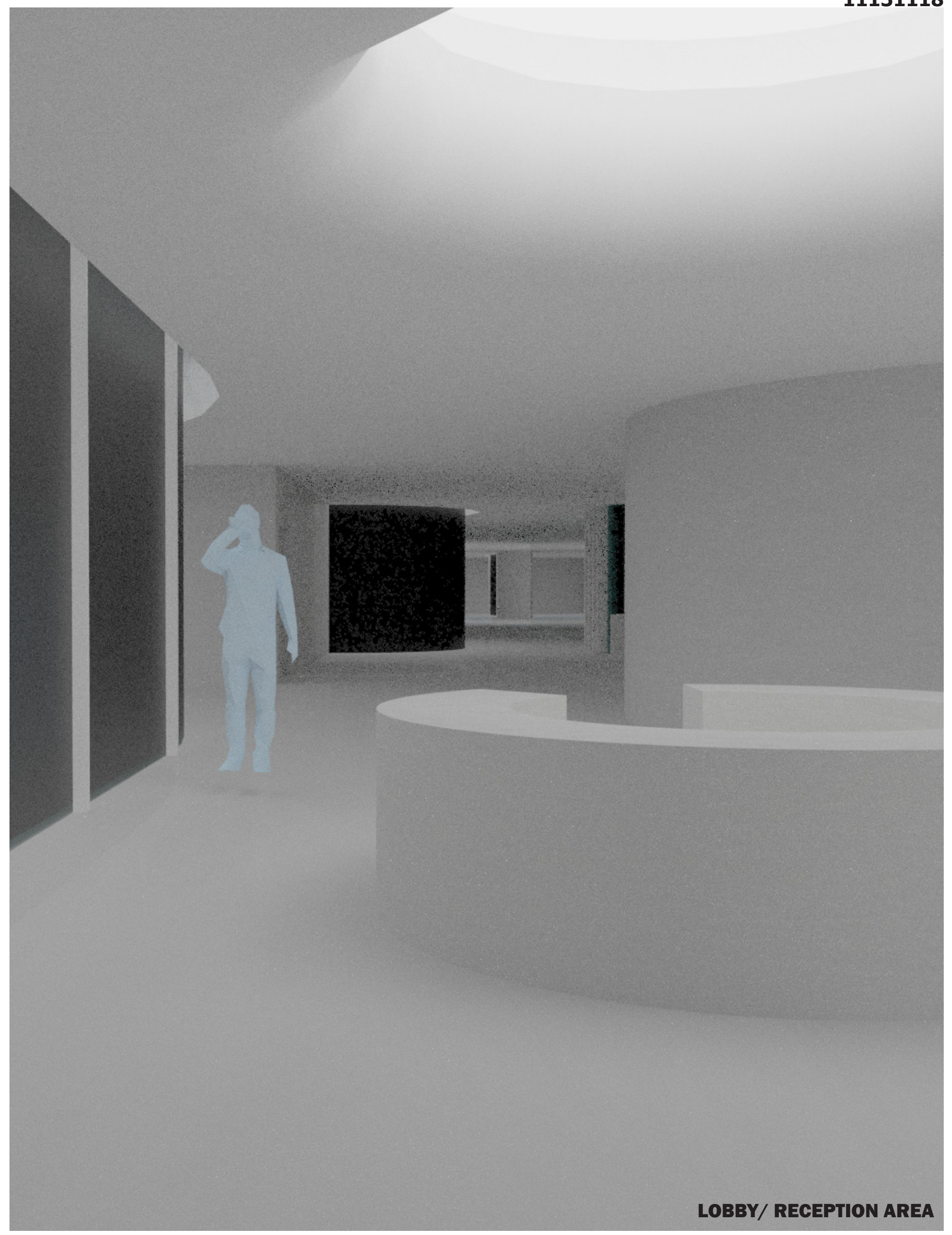
SECTION C-C'



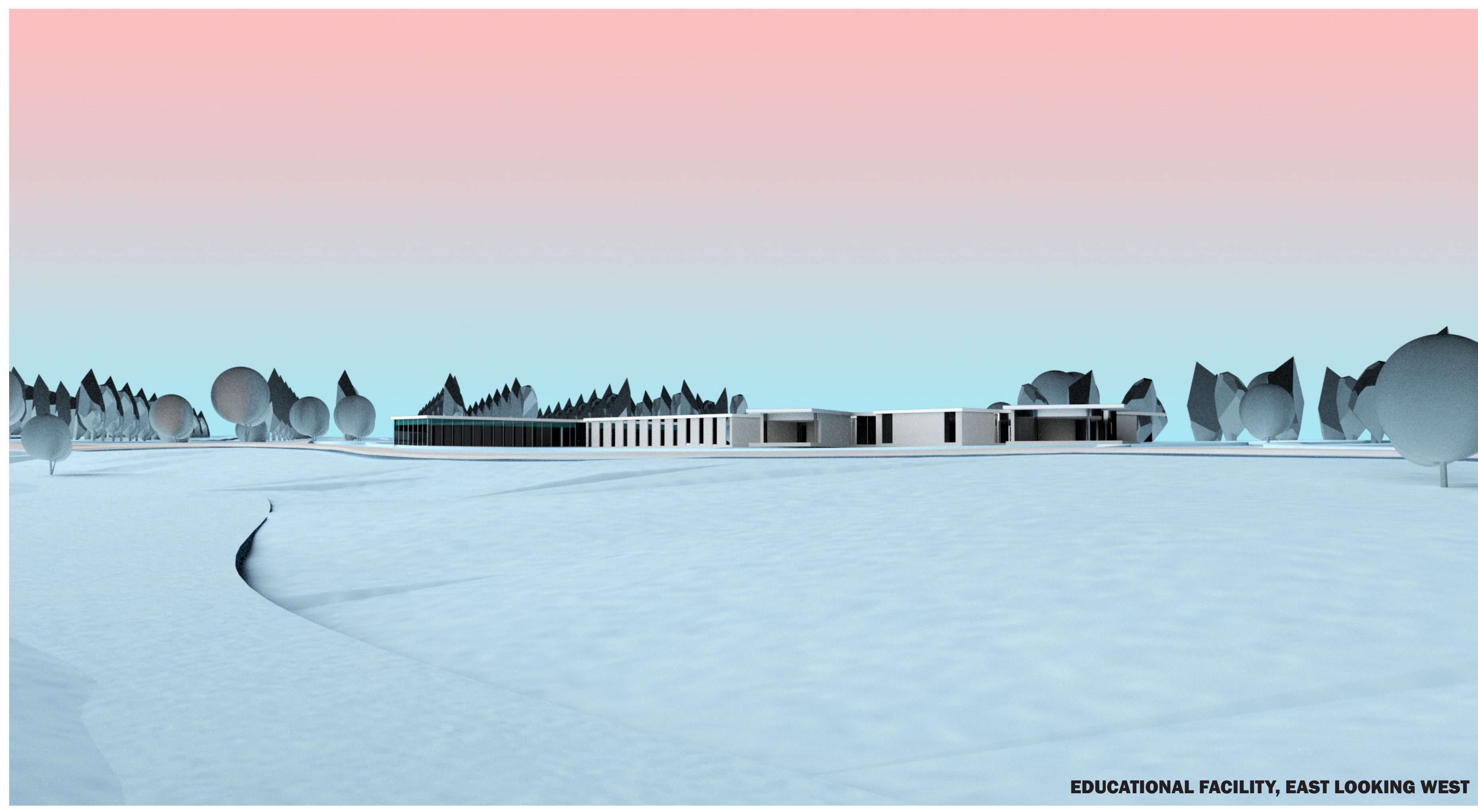
SECTION D-D'



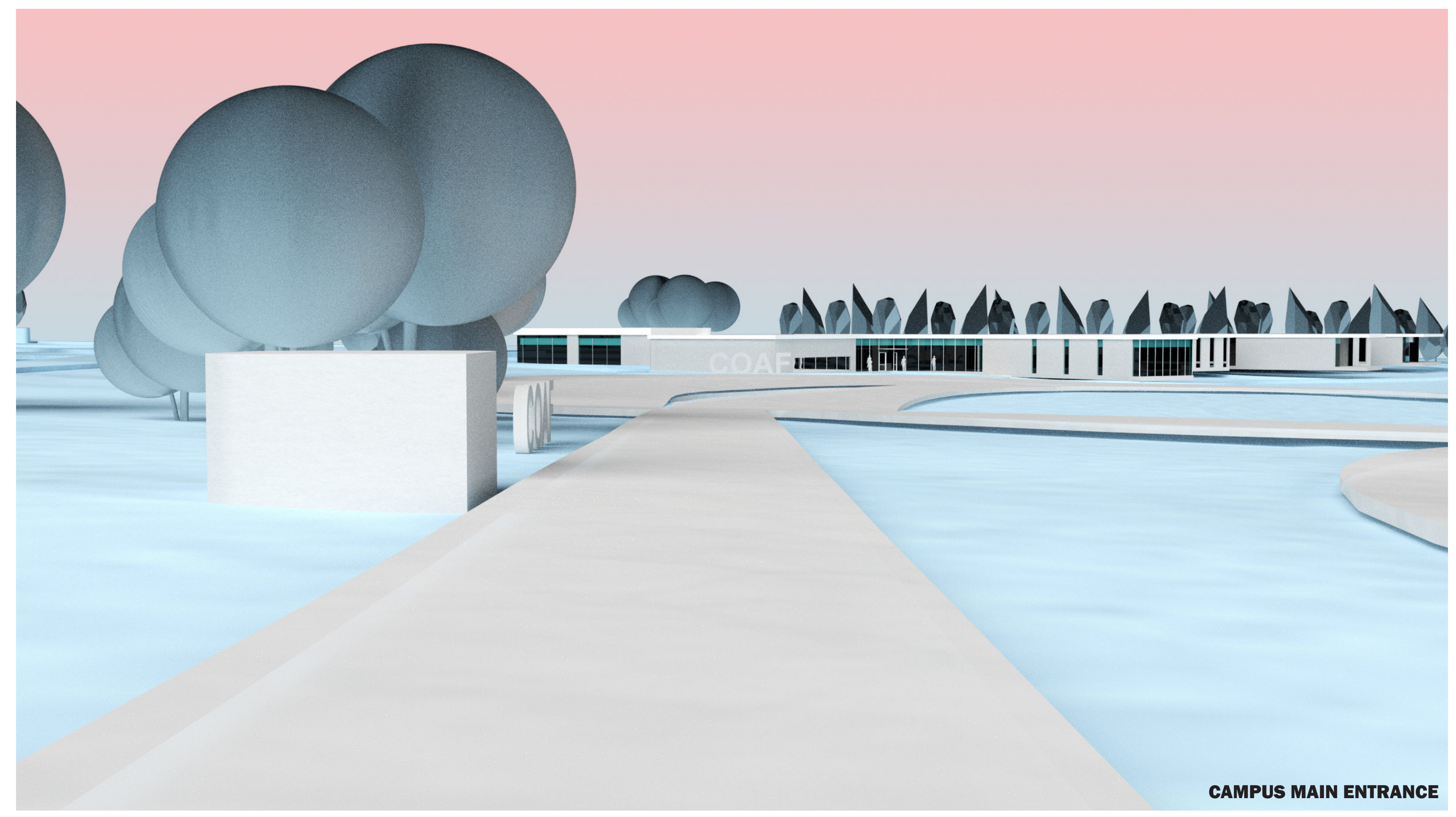
PROJECT OVERVIEW



LOBBY/ RECEPTION AREA



EDUCATIONAL FACILITY, EAST LOOKING WEST



CAMPUS MAIN ENTRANCE