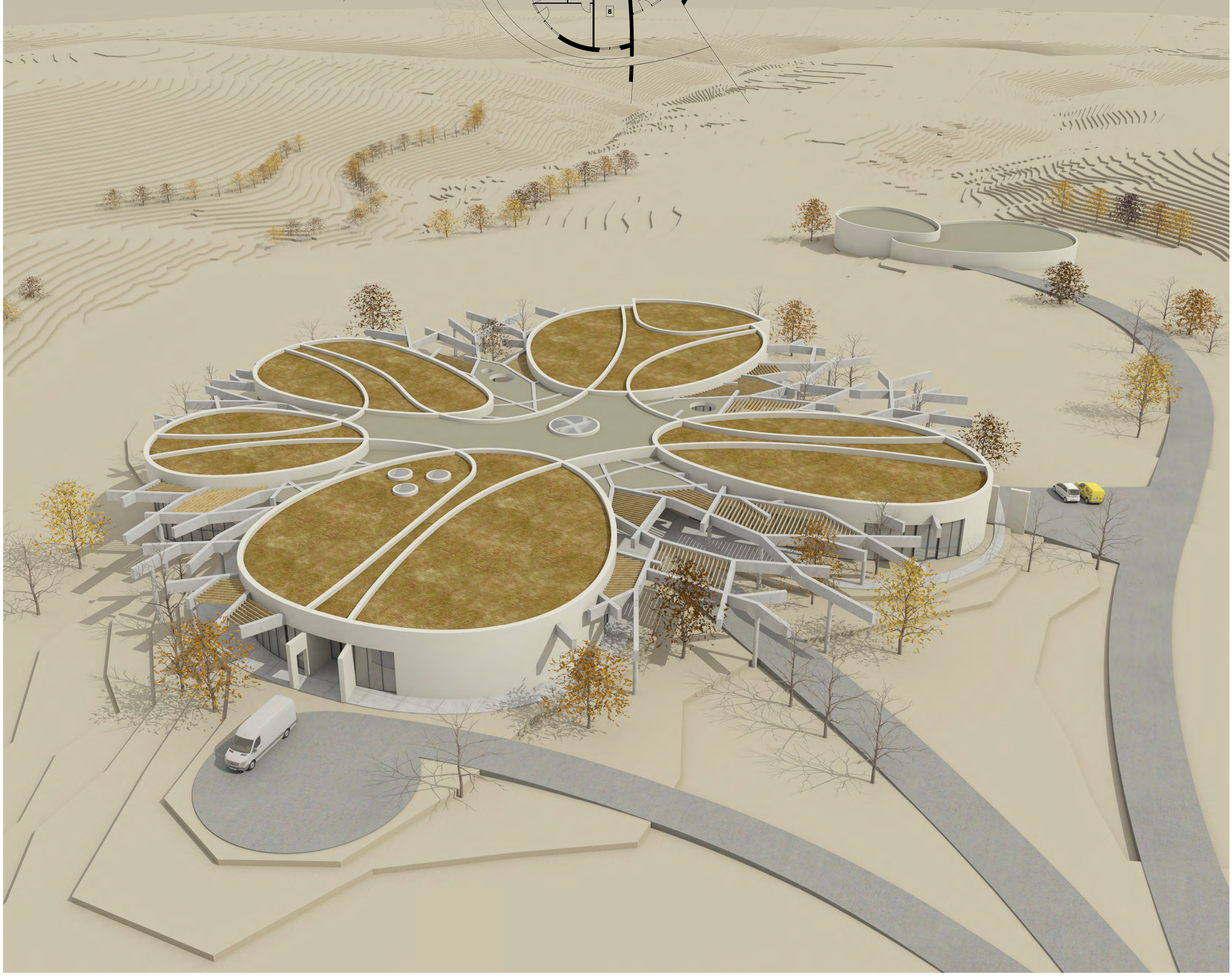


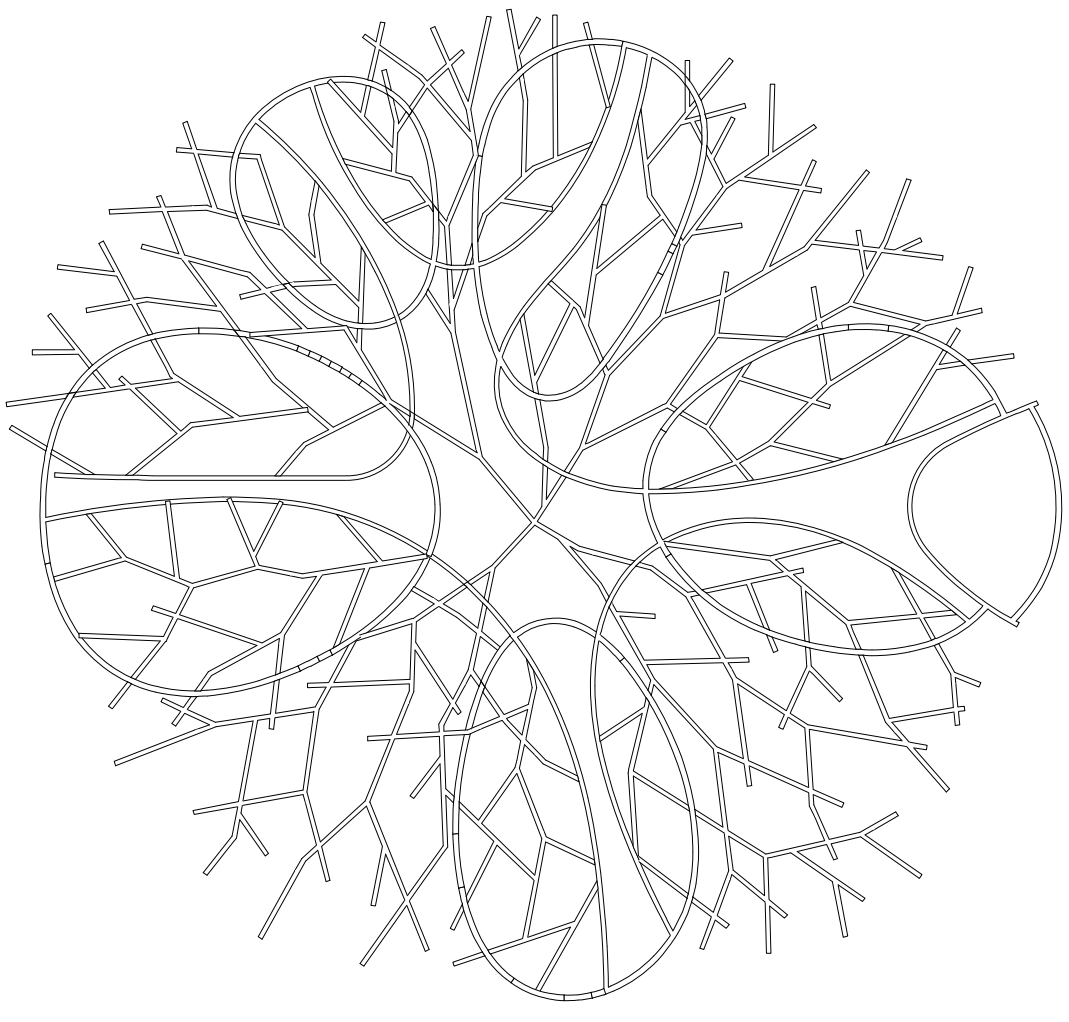


- 1- Reception area 500 sq.m.
 - 2- Programmatic rooms
 - a. Arts 57 sq.m.
 - b. Music 45 sq.m.
 - c. Athletics 59 sq.m.
 - d. Engineering 54 sq.m.
 - e. Languages 46 sq.m.
 - f. Entrepreneurship 51 sq.m.
 - g. Arts studio 59 sq.m.
 - h. Music room 64 sq.m.
 - i. Dance studio 160 sq.m.
 - j. Robotics lab 56 sq.m.
 - 3- Digital design studio 77 sq.m.
 - 4- STEM Wing
 - a. Biology 65 sq.m.
 - b. Chemistry / Physics 65 sq.m.
 - c. Geography 52 sq.m.
 - 5- Cultural corner 105 sq.m.
 - 6- Indoor sports area 410 sq.m.
 - 7- Library 109 sq.m.
 - 8- Health post 30 sq.m.
 - 9- Staff office area 233 sq.m.
 - 10- Cafeteria 220 sq.m.
 - 11- Auditorium 287 sq.m.
- Total floor area 3277 sq.m.





COAF SMART CAMPUS ARMAVIR ARCHITECTURAL COMPETITION



Armavir COAF SMART CAMPUS competition proposal was designed based not only on the tender tasks but also the characteristic features of the location - the relief, climate, opening scenes. The elevation located at the depth of 100 meters from the road of the southern border of the site's spacious area was chosen for disposition. On one hand it allows to arrange the car parking at the entrance, not overloading the area with roads, on the other hand to arrange the entrance to the campus from the south-western side, from where the opening scenes are the best. From the chosen height opens a magnificent scene to Mount Aragats in the north - east, Mount Ararat in the south-east and to Mount Arteni in the north - west. The mentioned dominant natural directions are the base of the campus plan development, becoming the shape-generating spine of the plan.

The construction has a shape of a tree, the foliage of which are its functional blocks, and branch-shaped concrete and wooden pergolas are designed between the yards creating plentiful shade, which, in its turn, will milden the hot climate impact of Armavir.

In terms of visuals and planning the construction consists of 5 functional blocks, which are grouped around the Entry Zone. The blocks are divided according to the following functional zones:

Block 1 - Administration block - Staff office area, Library and Health post

Block 2 - Special training block - 4 Specific programmatic rooms, Digital design studio and STEM wing - consisting of 3 rooms.

Block 3 - Standard training block - 6 Standard programmatic rooms

Block 4 - Auditorium - Foreseen for 250 seats

Block 5 - Cultural and Athletic and Food Block - Indoor sports area, Cultural corner and Cafeteria.

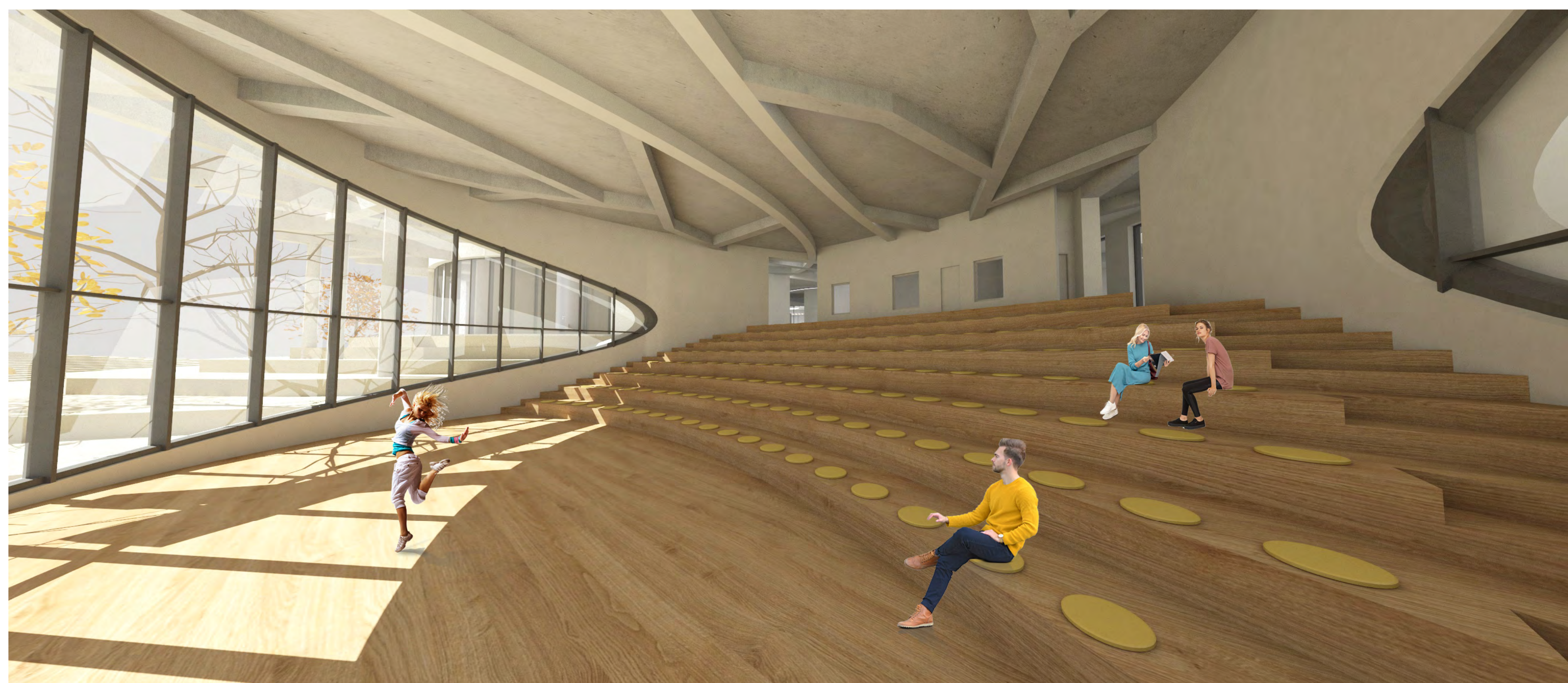
The flows of the above mentioned functional blocks come across at the Entry zone.

This way of planning enables the blocks to exploit different functional zones together as one unit, as well as separately defining separate working schedule for each of them. The Health post is foreseen at the road, where the ambulance car will be able to approach. The Library, Cultural Corner and 4 of Standard programmatic rooms are designed as open areas. All rooms are provided by natural light and immediate exit: only the Cultural center has skylights. Both the roofs and pergolas can be used for solar panel installation.

The open stadiums are foreseen in the western part of the construction next to the close sport zone.

The campus is designed as one-storey, the total surface - 3277 sq/m.

The Events Center is foreseen 80 m to the east from the campus at 5 meters lower ground from it. On one hand such location of the Events Center has an opening scene to mounts Aragats and Ararat, on the other hand it does not block the scene opening from the campus.

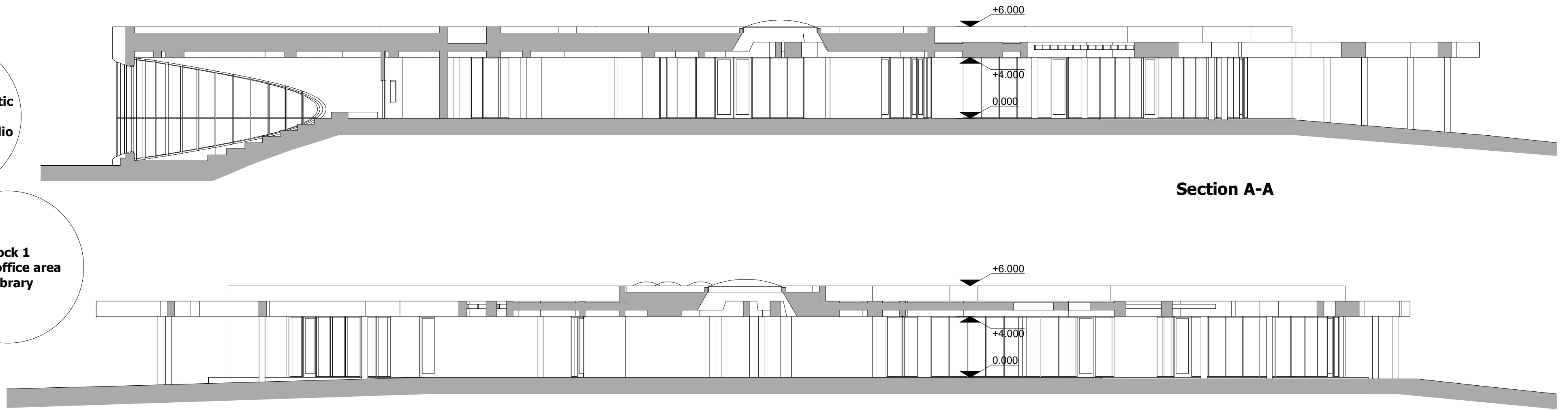
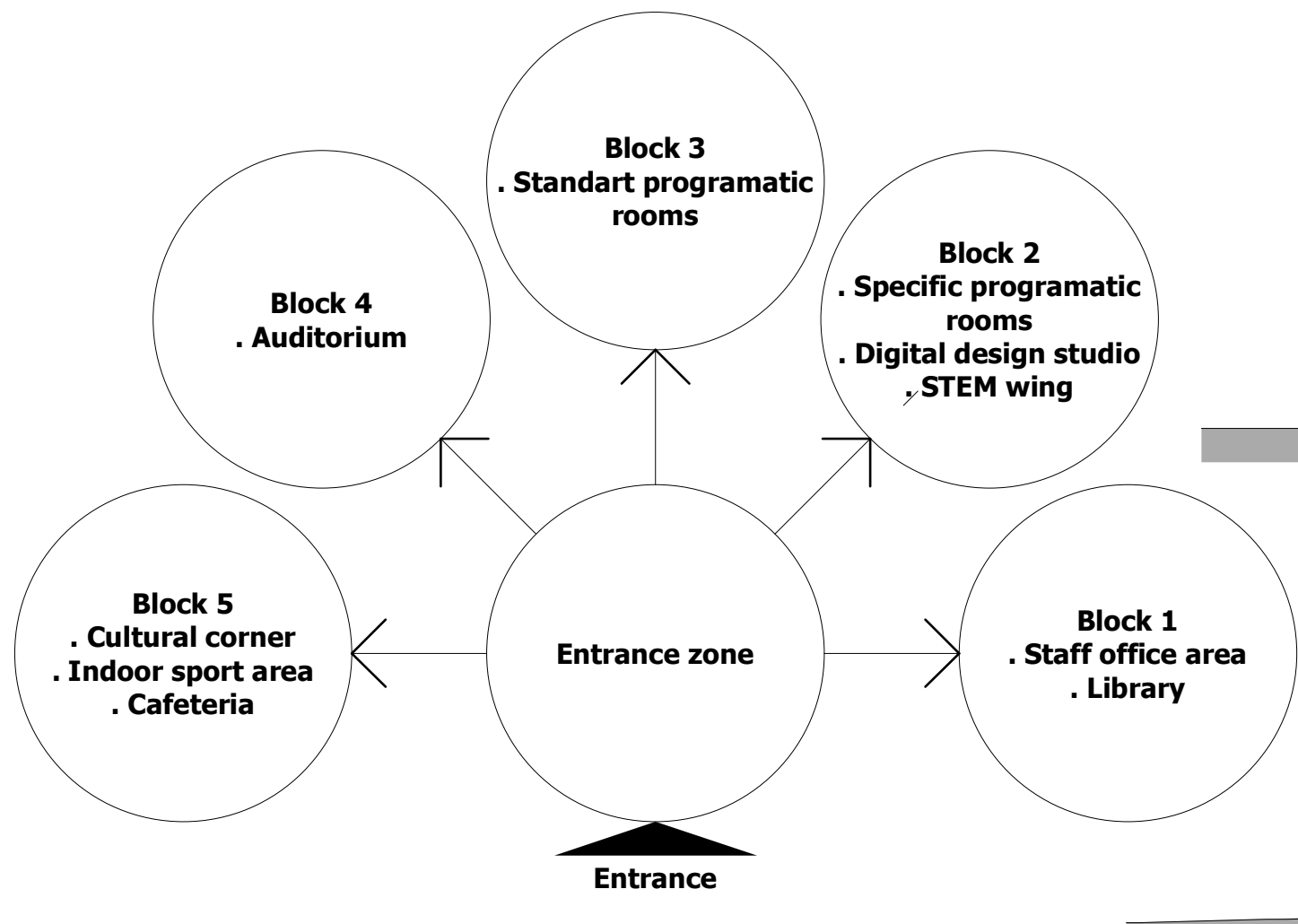




Main facade scale 1:200

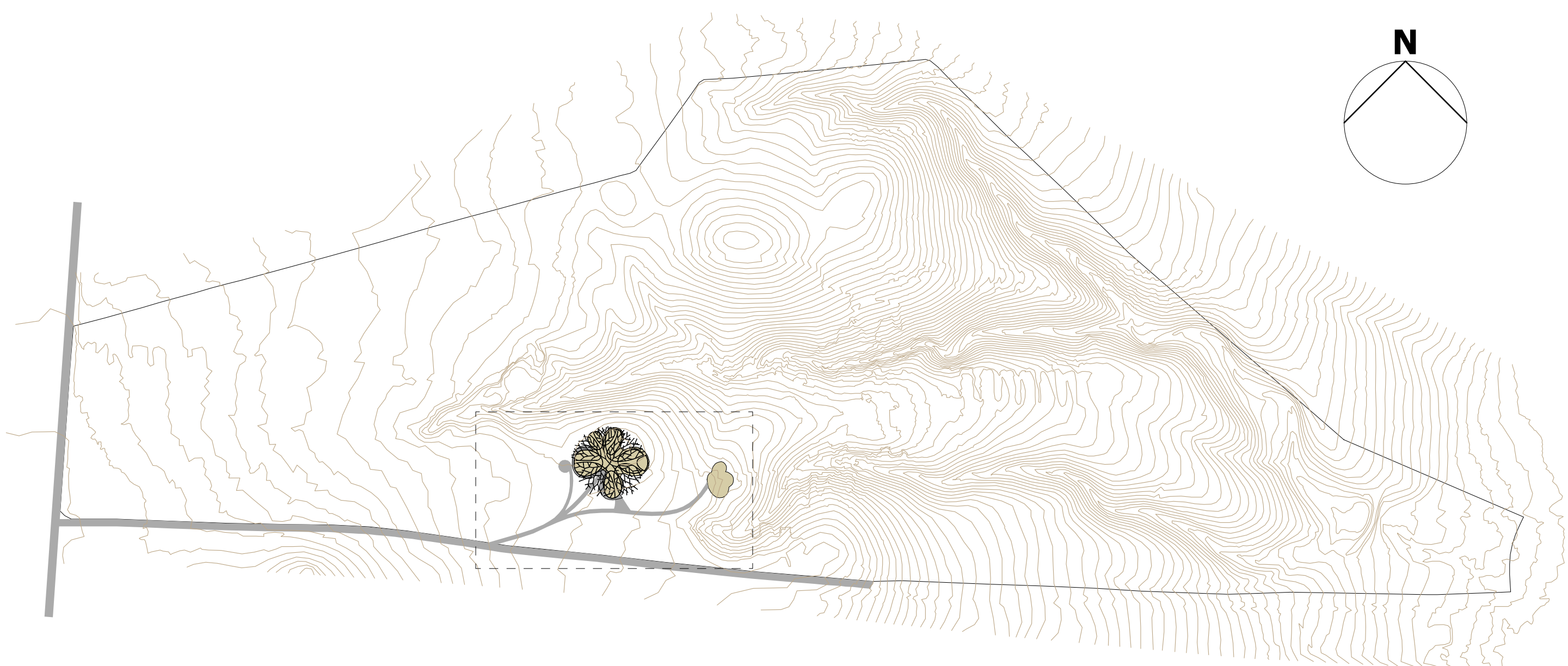


South-east facade scale 1:200



Section A-A

Section B-B



Master plan scale 1:5000



Master plan scale 1:1200

