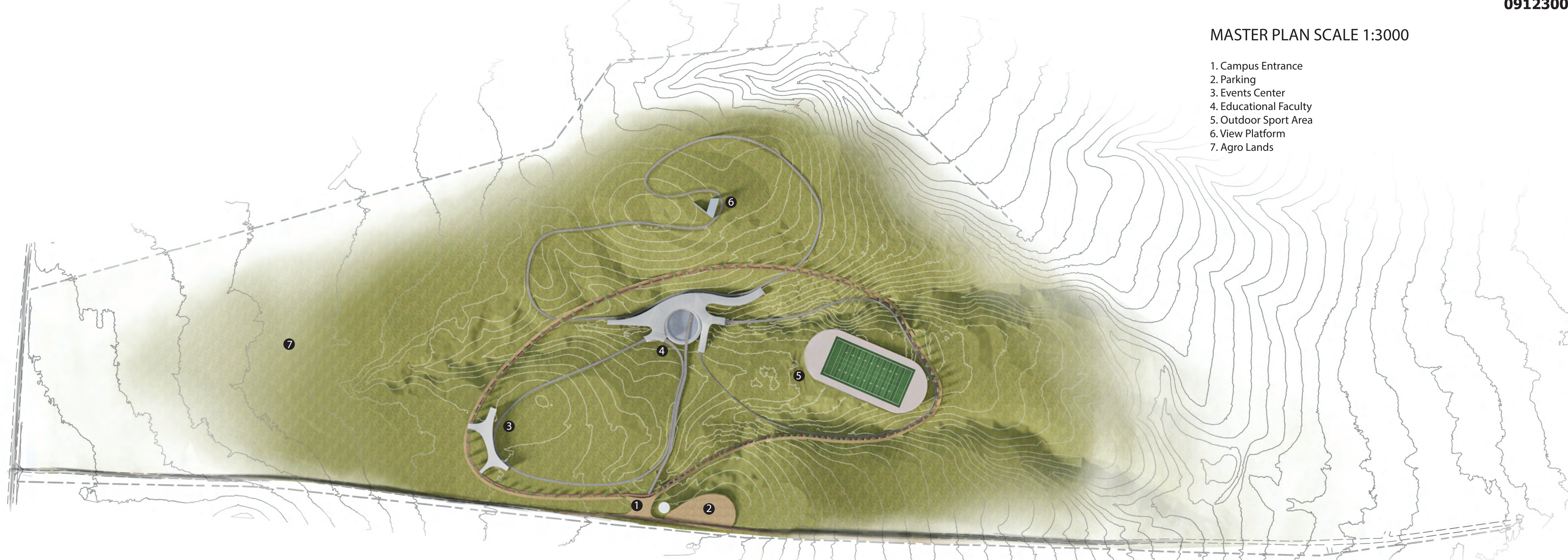


MASTER PLAN SCALE 1:3000

- 1. Campus Entrance
- 2. Parking
- 3. Educational Center
- 4. Events Center
- 5. Outdoor Sport Area
- 6. View Platform
- 7. Agro Lands



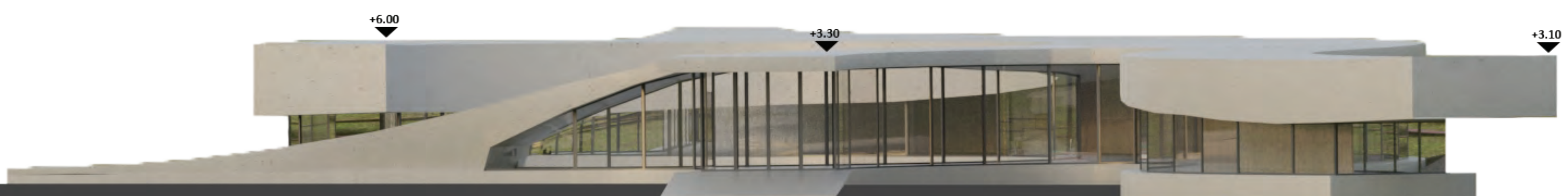
The project of COAF Smart Center is located on the outskirts of Myasnikyan village, Armavir region. The educational part of the campus is located in the central part of the area, the inspiration for its form came from a grape cell, which grows and connects to the events center, an outdoor sports field and with the view platform. The view platform is a mirrored volume which is located in the highest part of the place, with a view of Ararat Aragats mountains. The entrance of the educational building is formed around a water pool, the educational rooms are formed with the outline of the topography line, the hall of the building is located on the underground floor.



FRONT A SCALE 1:300

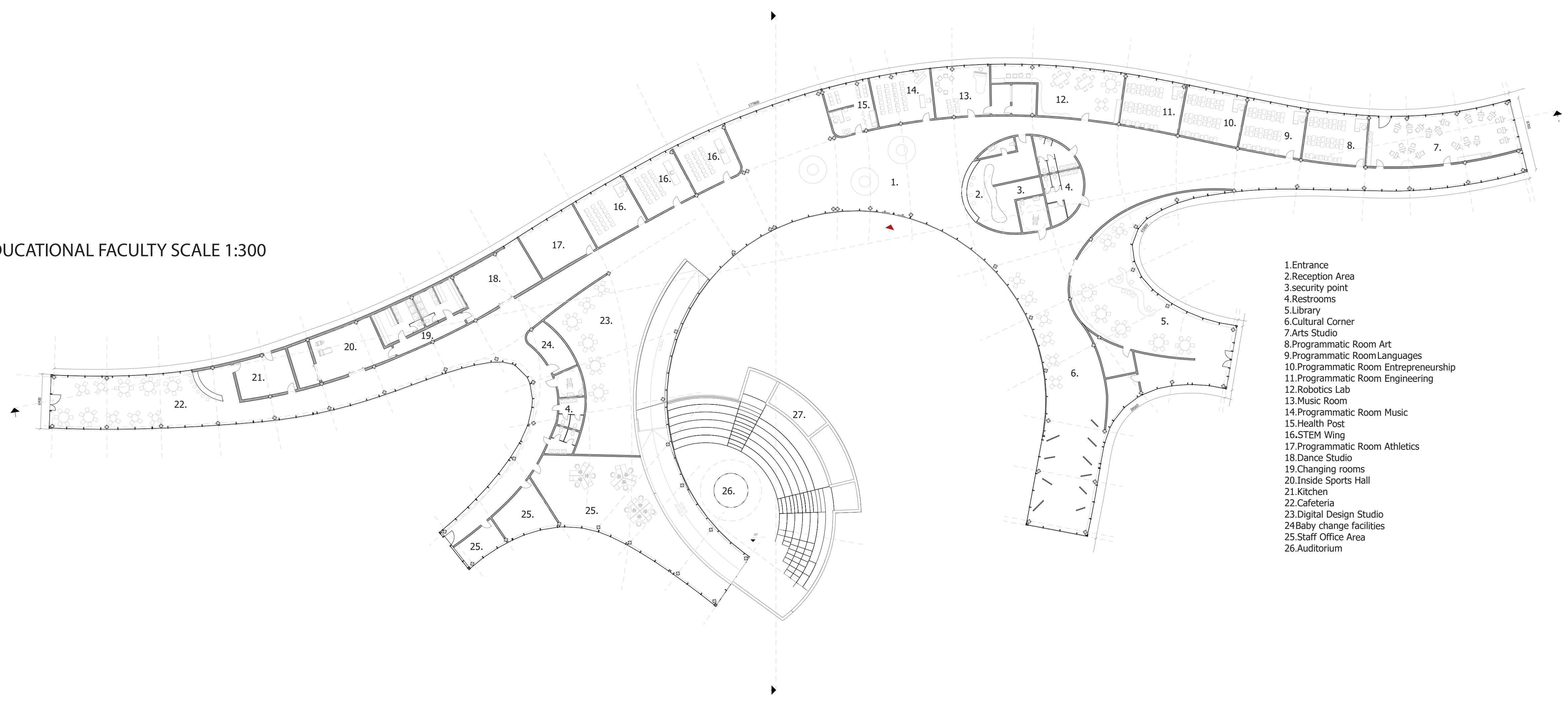


FRONT B SCALE 1:300

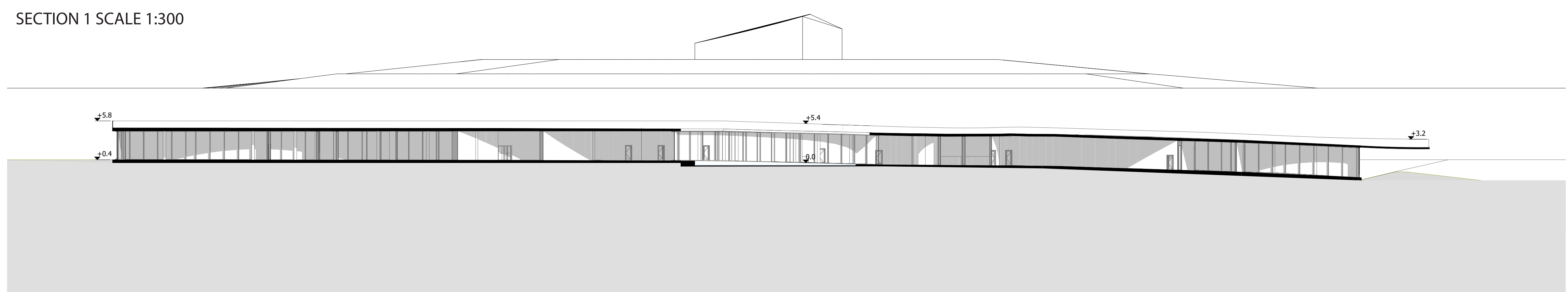




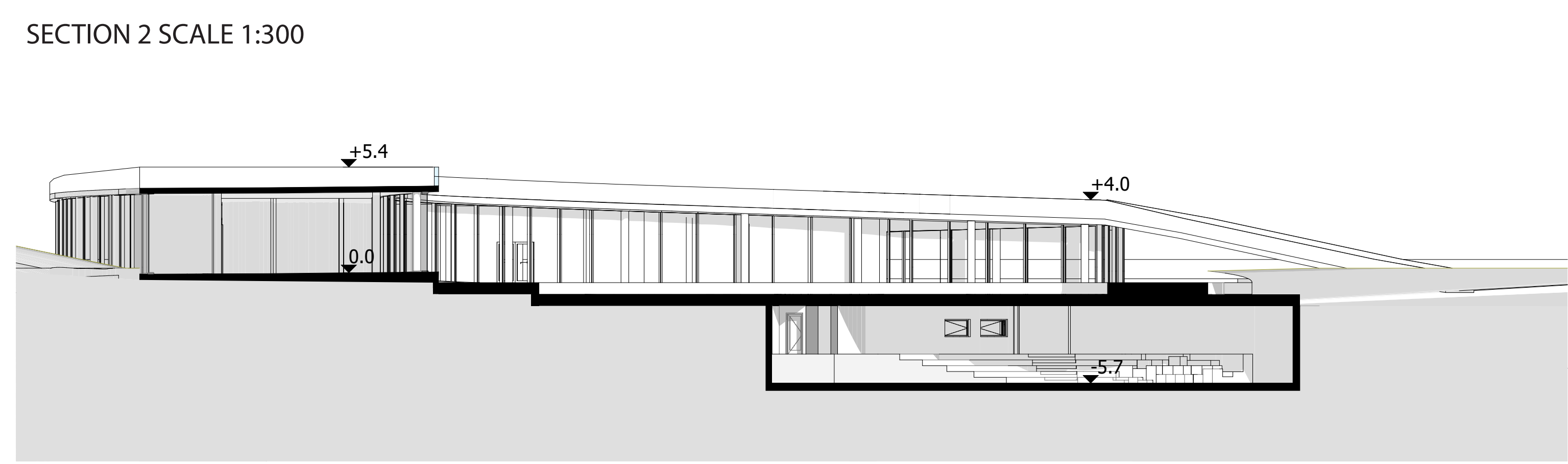
EDUCATIONAL FACULTY SCALE 1:300



SECTION 1 SCALE 1:300



SECTION 2 SCALE 1:300



FLOWCHART DIAGRAM

