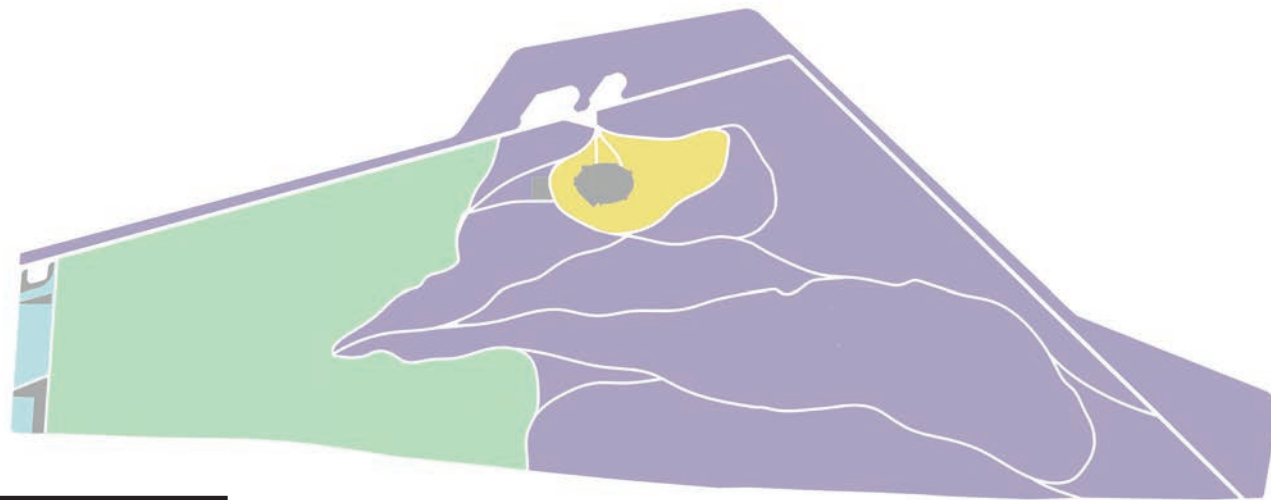


The idea of organization of spatial relationships comes from the following considerations :

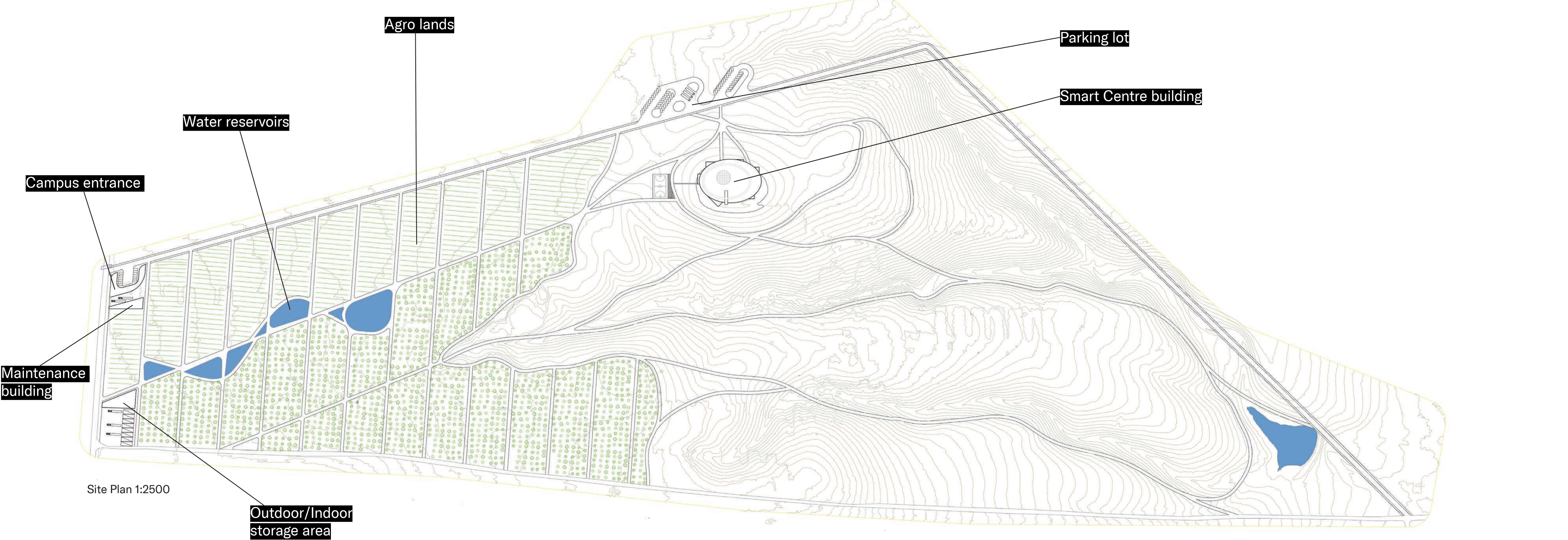
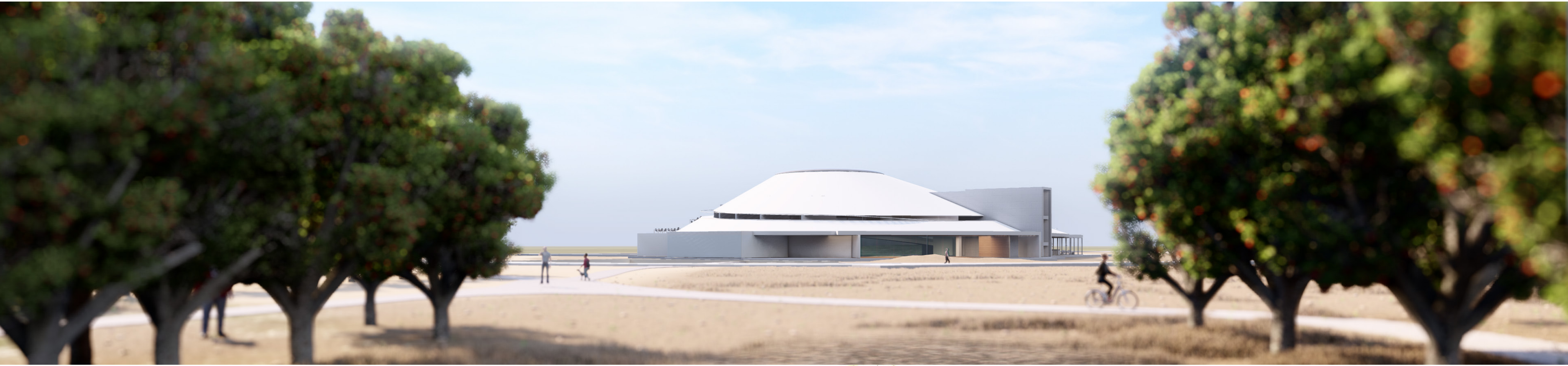
*How to place the building in the vast territory?*

*How to organize the territory?*

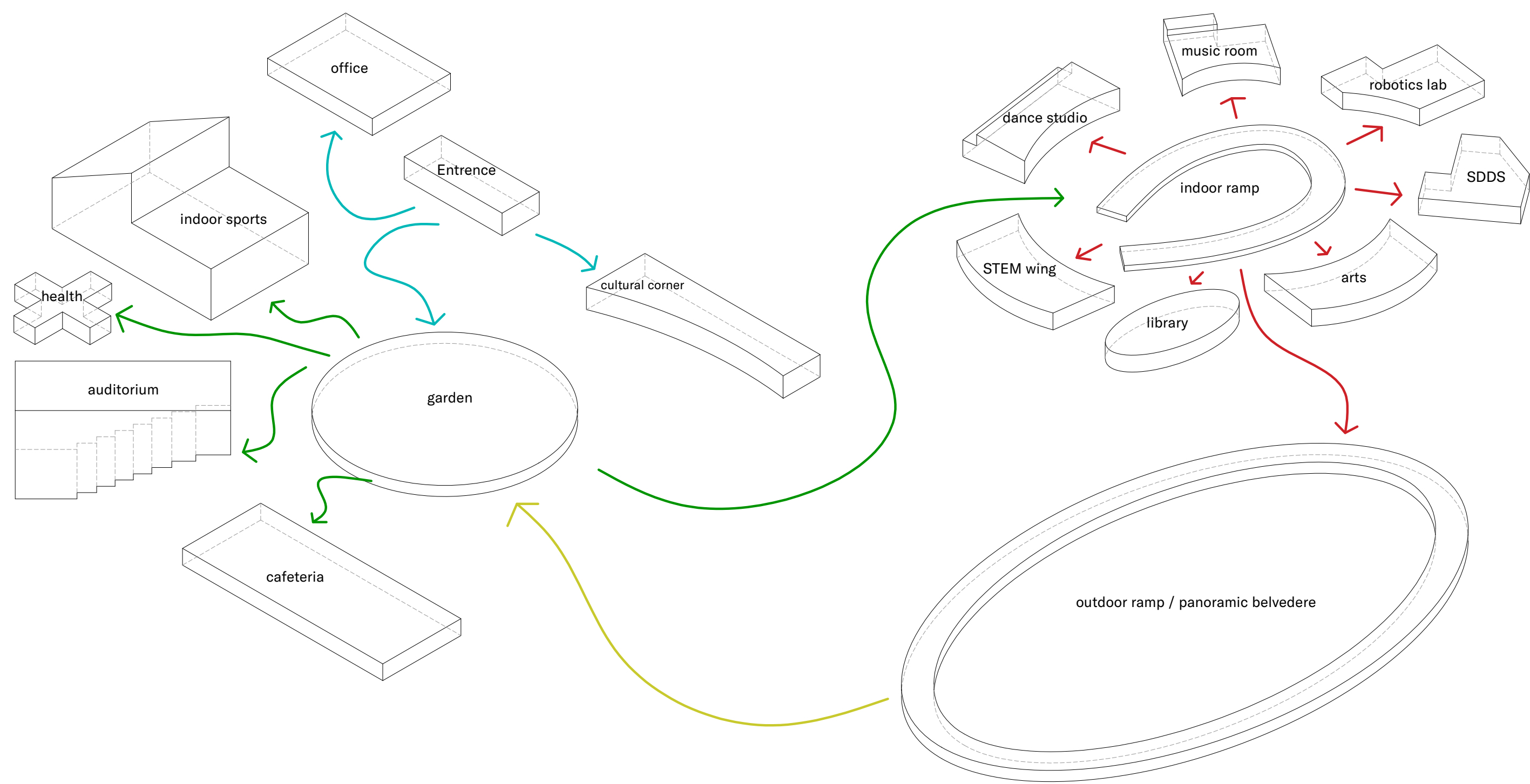
*How to build a relationship between the building and its surroundings?*



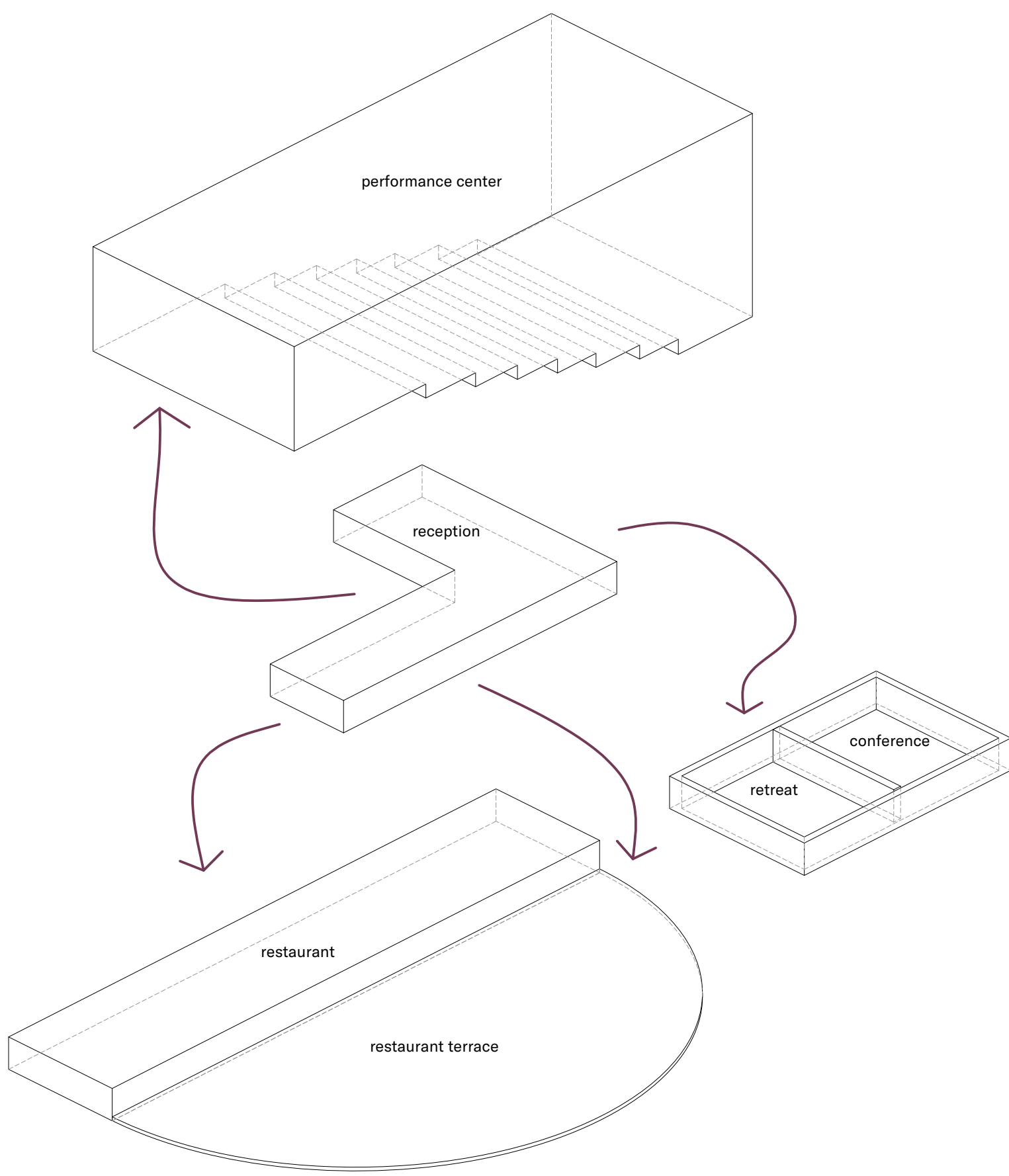
The building sits on the elevation of the northern part of the site which is its uppermost point. The territory is divided into four zones. The first zone is the strip of land on the west of Smart Campus along the road. The entrance of the campus is located in this zone which is the first meeting point. The Agro Lands occupy the territory between the first zone and the site of the building. On the journey towards the COAF center you walk/drive through the cultivated land - the green space that stands in contrast to the rest of the territory. The building and its immediate environment is the active zone of the educational facility and its users. The undulating landscape of the southeast of the Campus site is left untouched, only to be marked by the network of walking paths that covers the whole territory. The site is surrounded by towns and villages whose inhabitants will be the future users of the Campus. The position of the building and its outline allows it to be seen from afar becoming the visual anchor and a landmark. Formally it is related to the distinctive feature of that landscape - the mount Aragats and Ararat.







Educational Facility



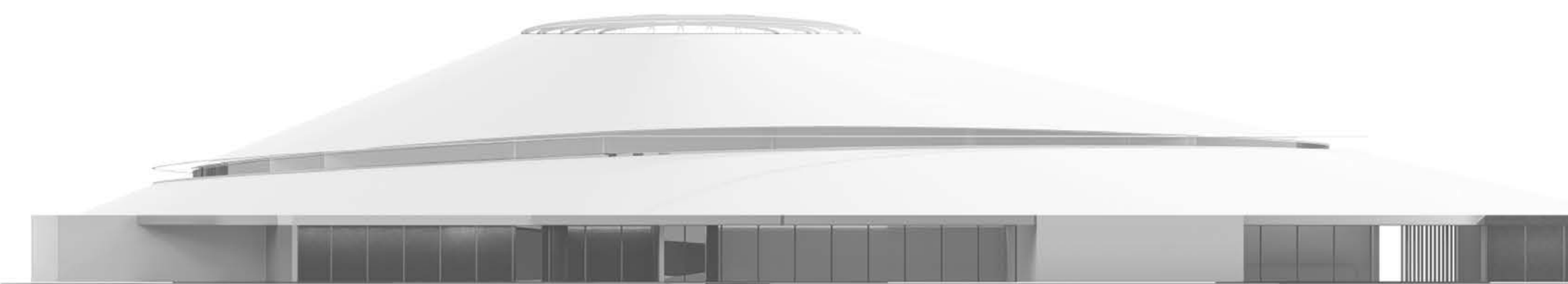
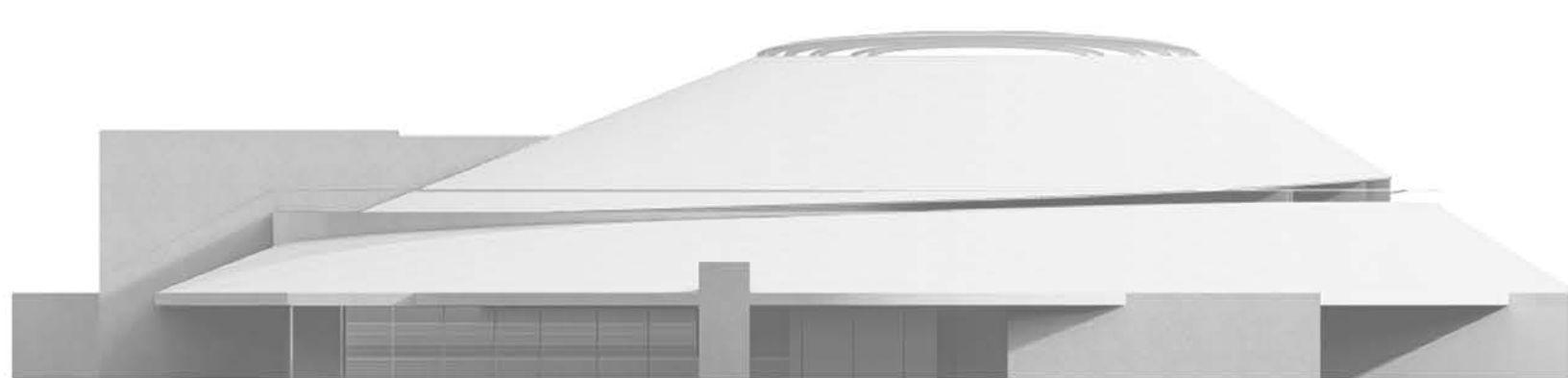
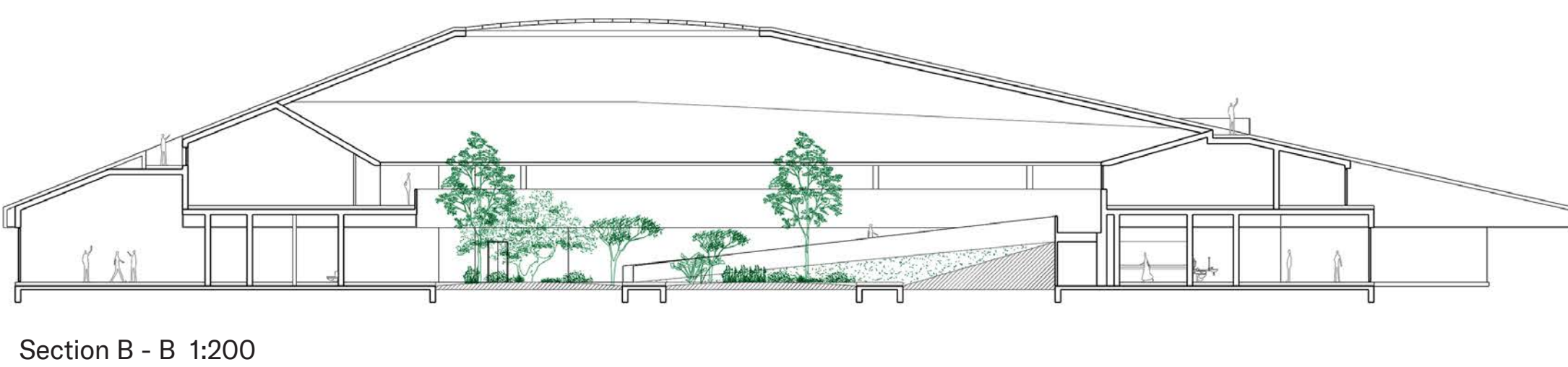
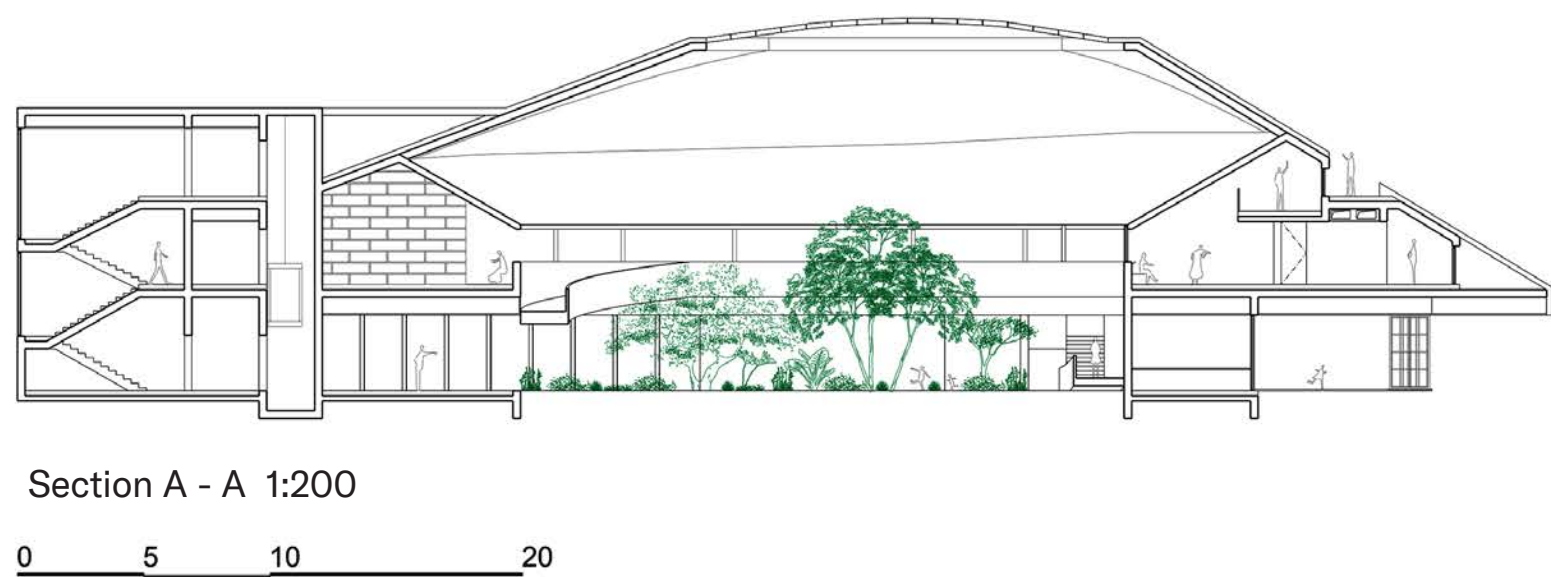
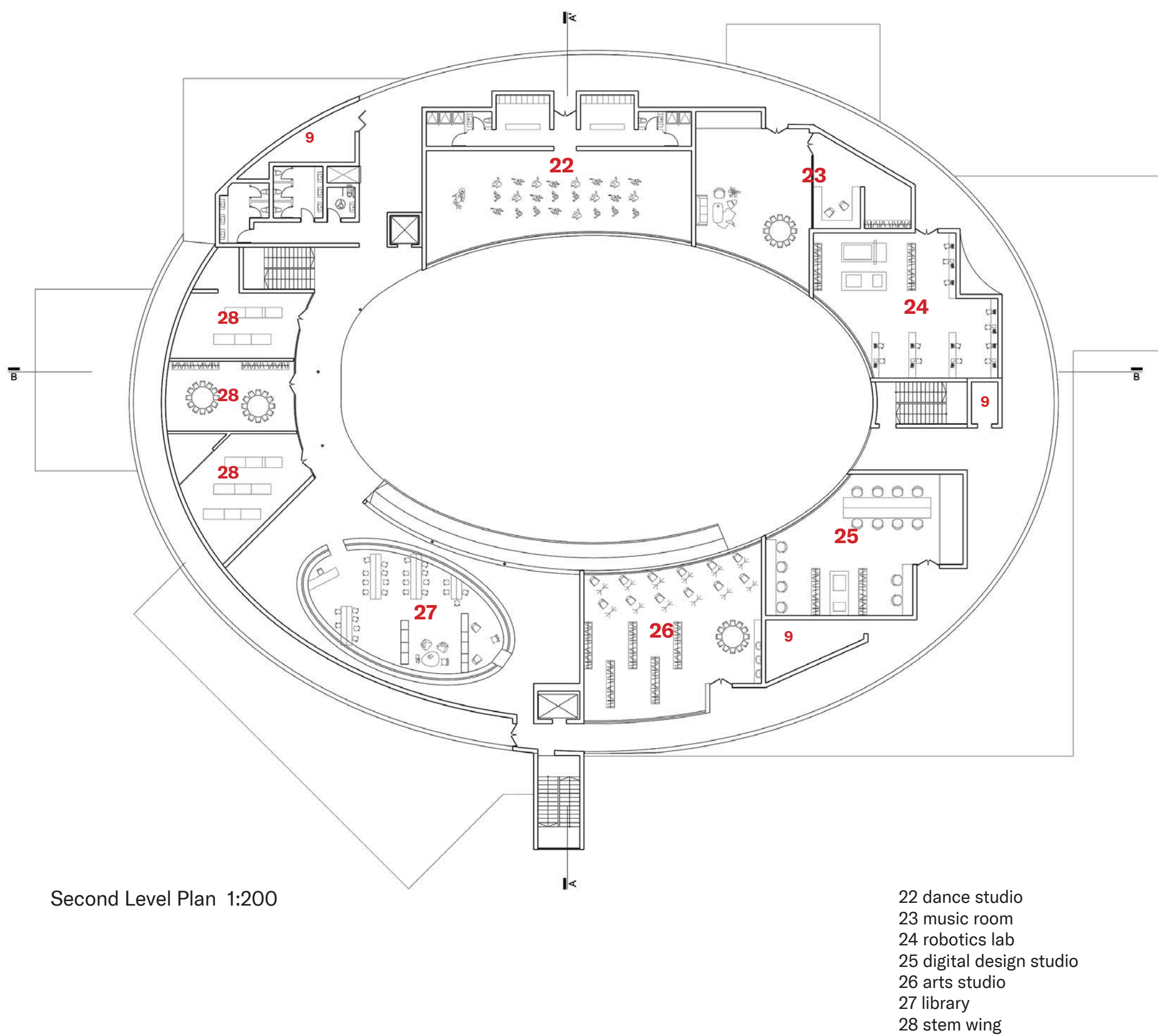
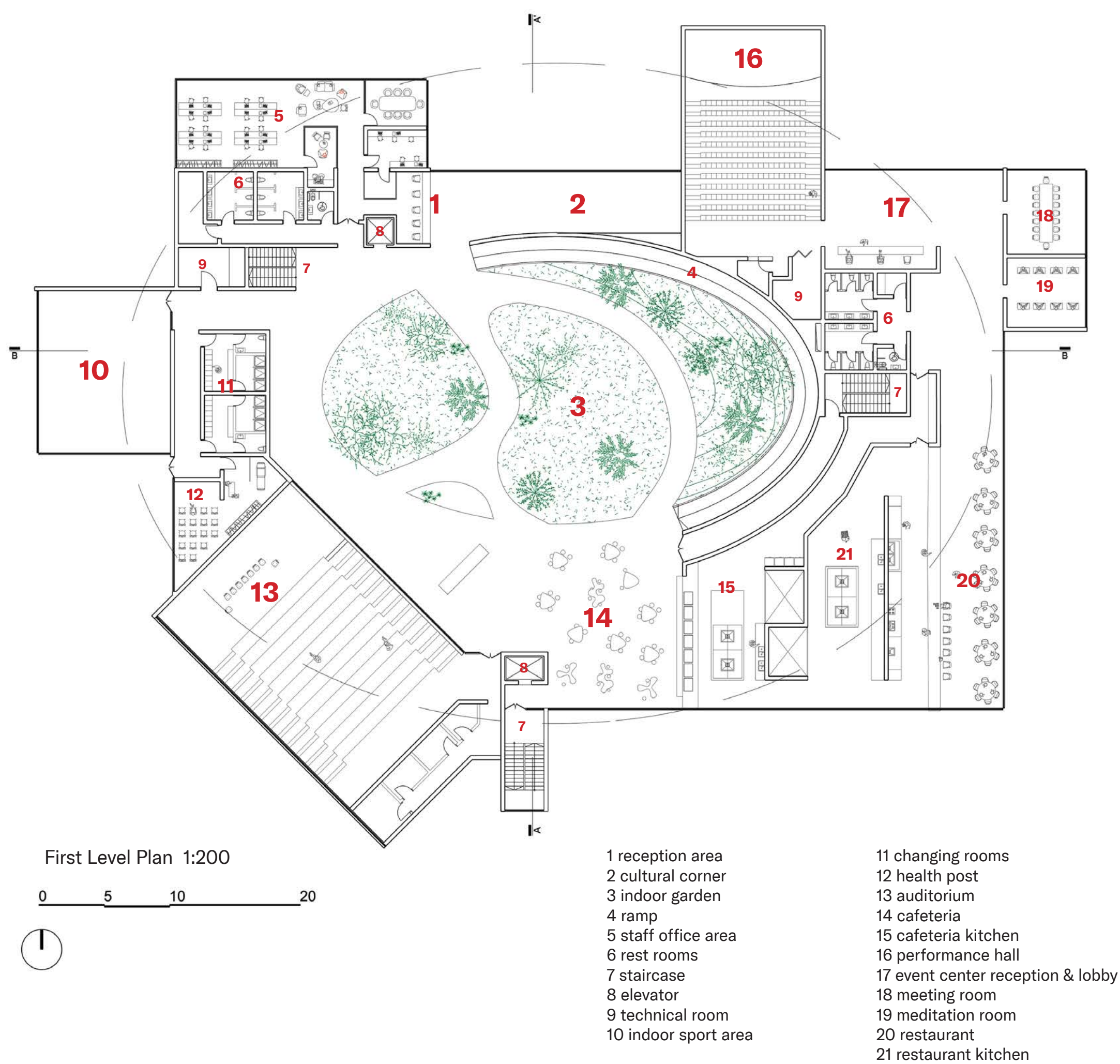
Event Center

The programme of the building unfolds under one roof. The core of the building is the atrium with the indoor garden which unites all the spaces of the Educational Facility around itself and isolates it from the Event Center. The garden is the meeting spot for the campus community - a place for interactions, a playground, a patch of nature inserted into the building.

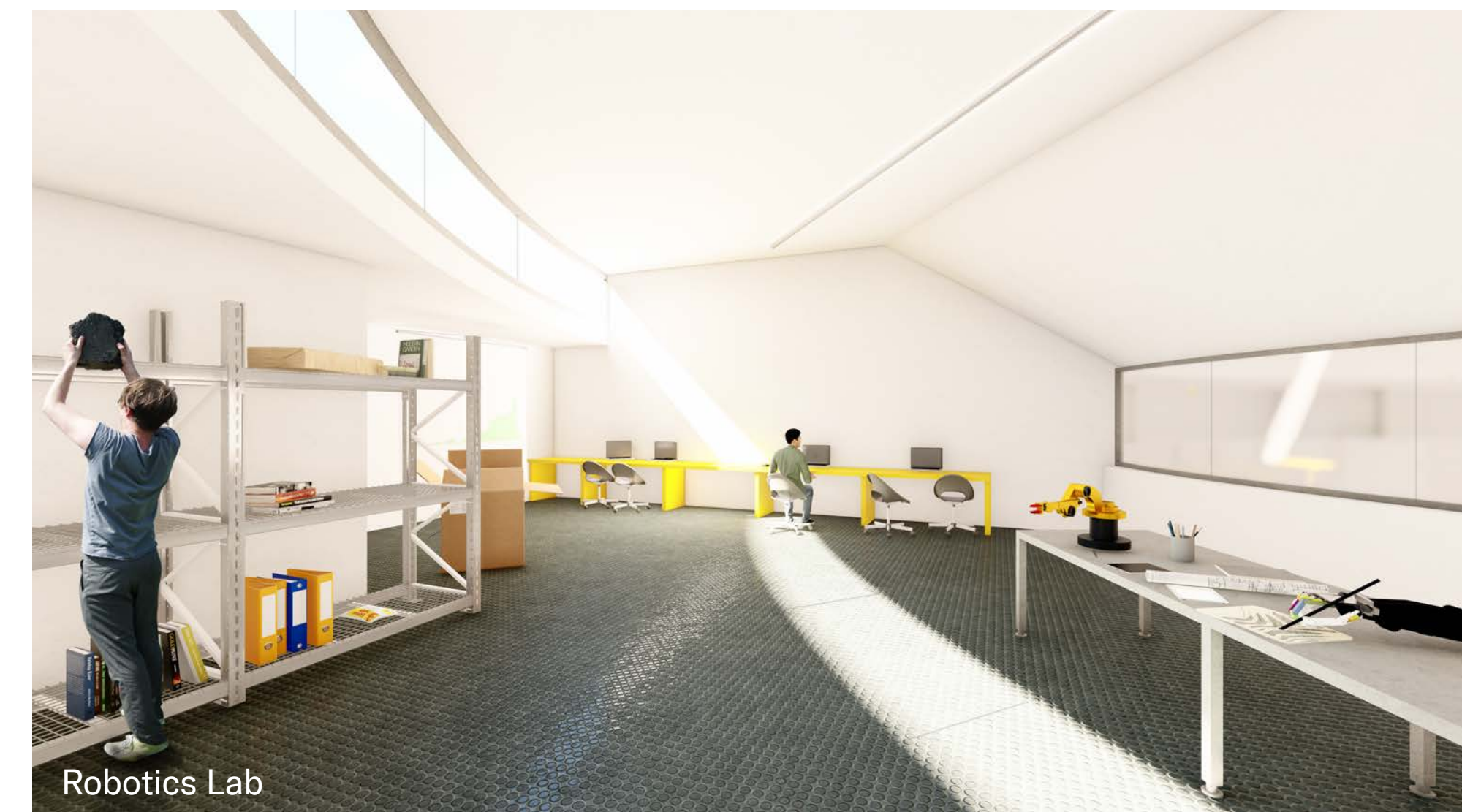
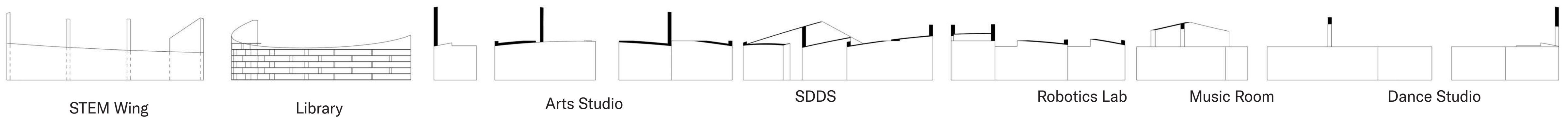
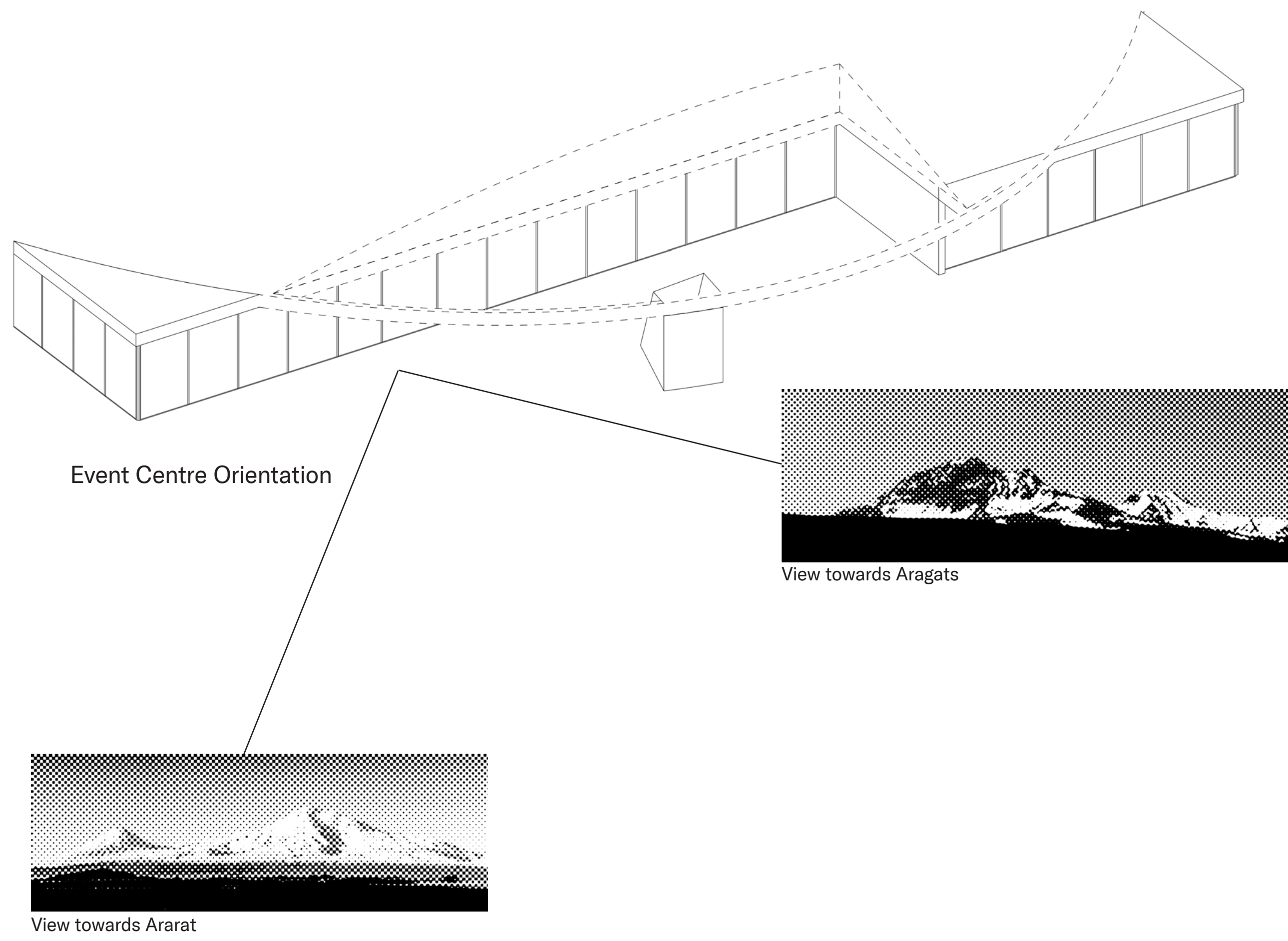
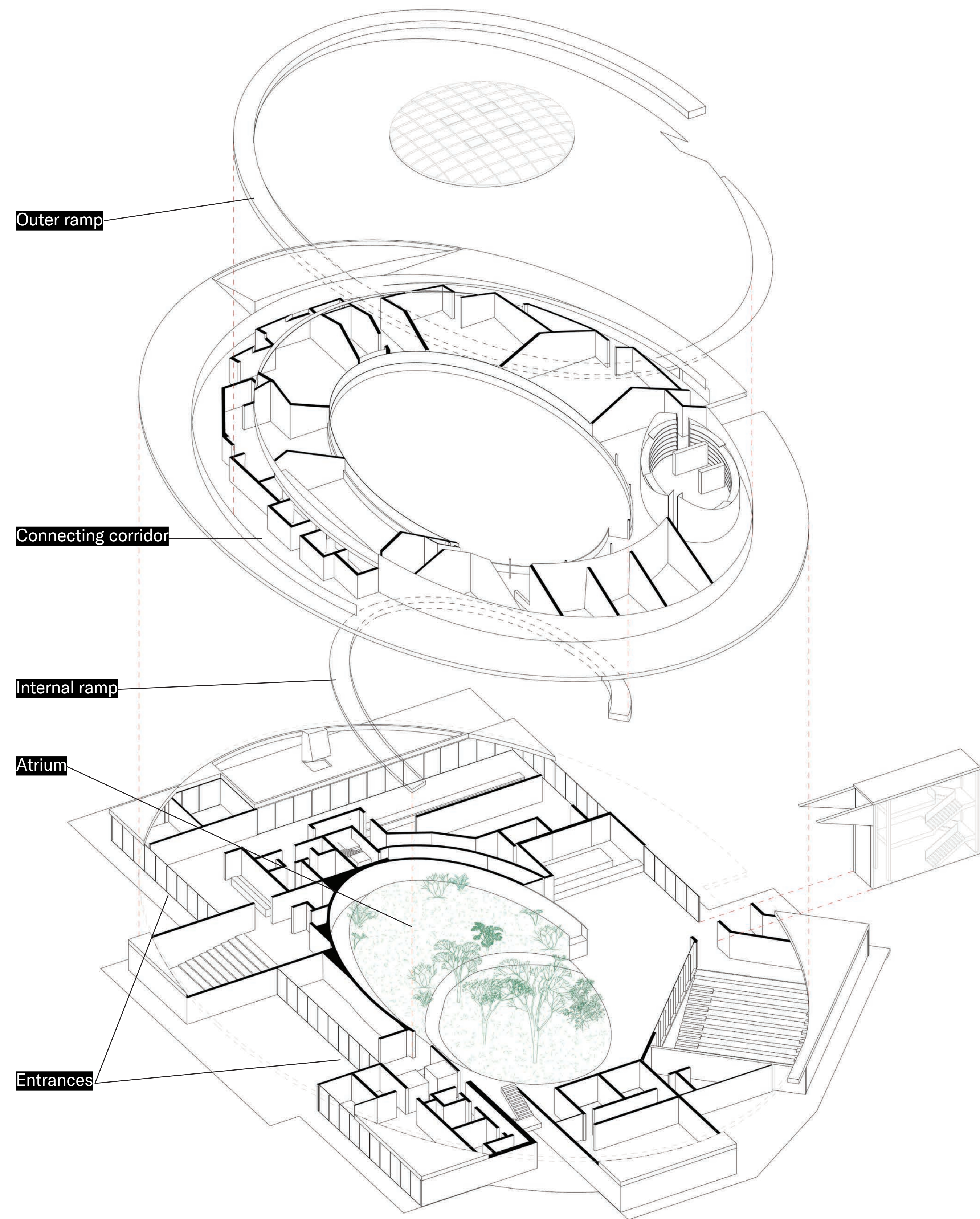
Educational Facility is distributed on two levels. Spaces that need access to the outside and strong connectivity are located on the ground floor. Programmatic rooms are placed on the upper level with the views on the inner garden and the access to the outer ramp.

The entrance to the Educational Facility is accessed from the parking lot. Before coming into the inner garden you walk through the reception and the cultural corner. All the spaces in this section of the building are visually accessible from the atrium. The curved ramp that runs around the garden will take you to the upper level to the spaces of learning. The rooms on this level are accessed from the circular corridor that eventually turns into an outer ramp which encircles the building from the outside.

The Event Center is located on the east side of the building and is oriented towards the views onto Mount Aragats and Ararat. It is spatially separated from the rest of the building and works as an autonomous entity. The central feature of this compartment is the restaurant with its magnificent views and the outdoor sitting area.







Each room is unique in its planning which is dictated by the function and form which is generated by the specific geometry of the building. There are two light sources in each room - direct light from the outside and diffused light from the atrium.

