

1 Ground Floor
1 : 500



MAIN ACCESS

COAF SMART Campus Armair

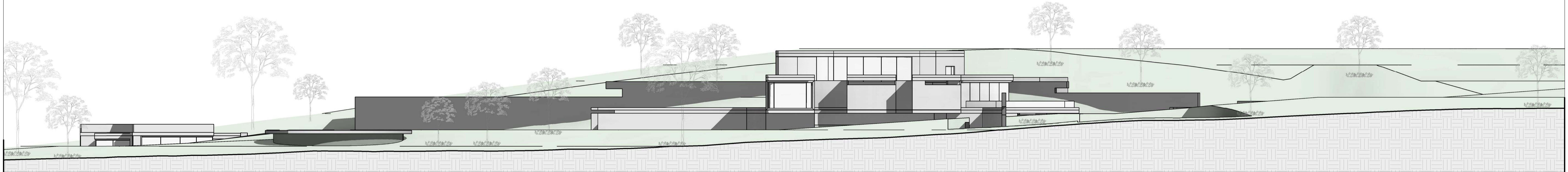
The proposal is born from the idea of a concept that adapts and relates to its physical and cosmogonic environment, where materiality and form respond to a living natural context, with accidents, breaks, unevenness that enrich the concept and give it strength. A form that adapts and interacts with the natural context in such a way that the form and the environment communicates with each other, making an interesting game between the terrain and the lines of tension generated by the proposal. A materiality that relates to a hard physical environment, which proposes a tectonic that responds to this nature, the stone element as a primary element that enriches the conceptual form of the proposal and manages to dialogue with the physical context, making the architectural object mimic the terrain.

The proposal proposes a distribution that responds to the program presented in the brief, which is divided into zones to group each space according to their needs. The sections are: hands, heart and head; where the core of the proposal functions as the heart, and is where the essence of the program is housed, which is a space that allows the cognitive, intellectual, and social development of the student, the hands develop the motor part with sports or scenic activities, and finally the head is the part of the program that takes control and management of the hands and the heart, is where the Staff is located.

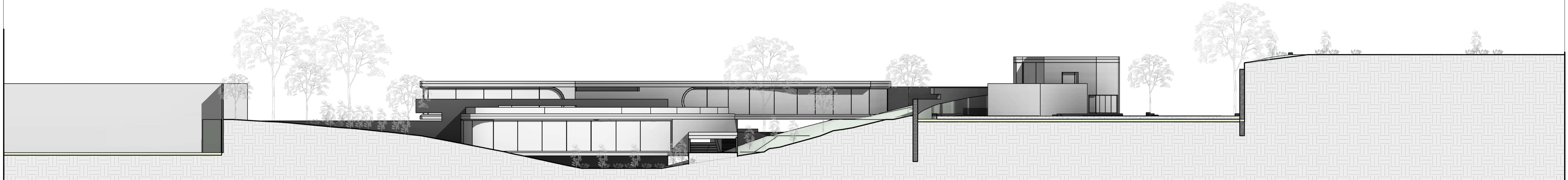
Heart. Located in the core of the proposal, and is where the different classrooms for the intellectual development of the student, such as STEM Wings classrooms, as well as classrooms for the arts, dance, workshops, etc. are located. These allow the cognitive development of the student. The conception of space starts from the student-teacher relationship and how it develops in academic life, since the space provides this relationship with elements such as lighting, furniture, shape, distribution, etc.

Hands. A transversal axis is proposed that reflects the abstract idea of the hands, where he understands the way in which the student develops his motor skills and generates a symbiotic relationship between mind and body. The proposal contemplates that from this transversal axis the student's motor skills are developed from a program that includes soccer fields, volleyball, basketball, swimming pool, gym, up to the point of the scenic activities that are developed in the auditorium.

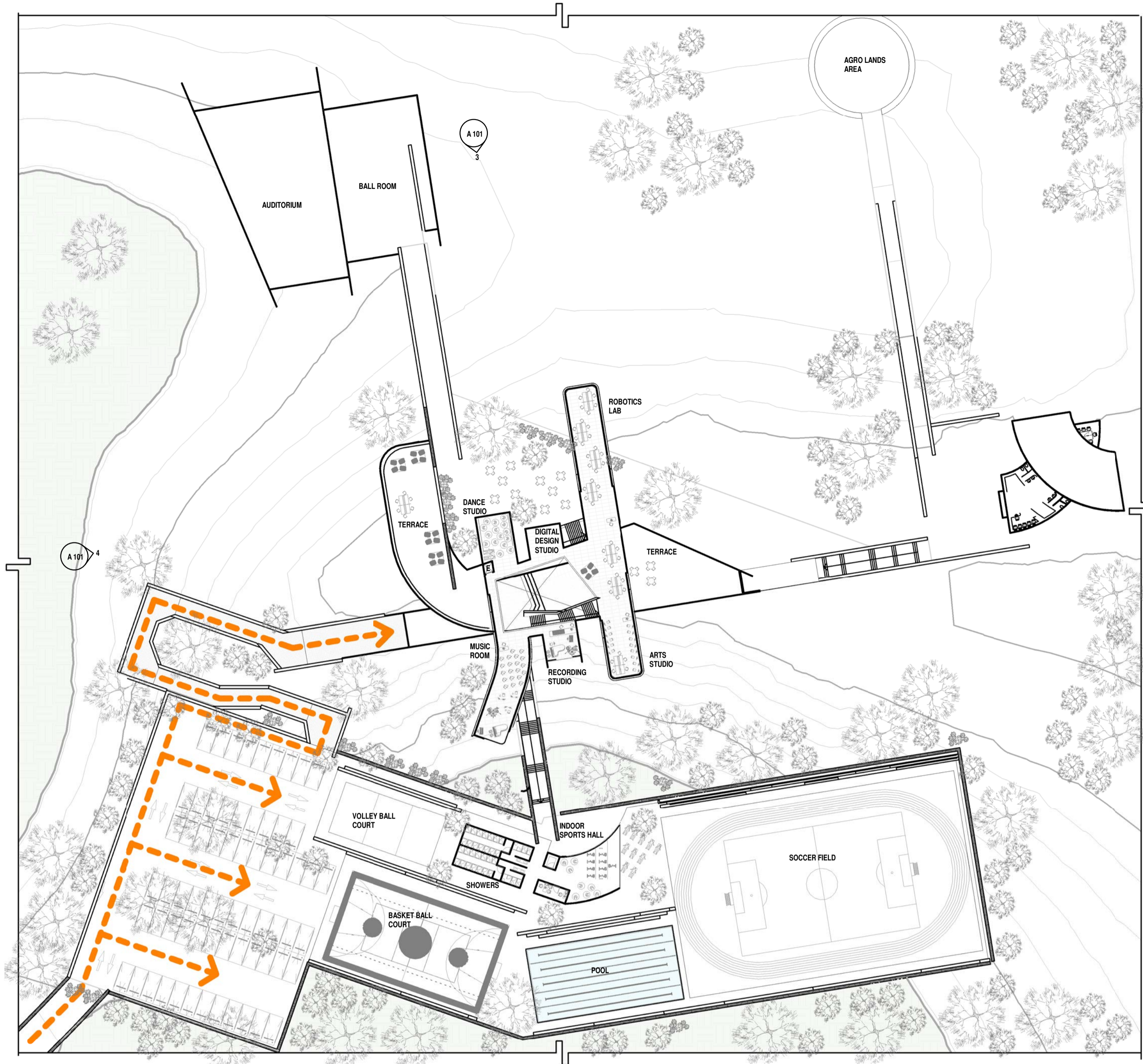
Head. It raises the abstract idea of control, which puts in order the heart and hands, directs and controls the different activities that happen in it without them realizing it, that is why this space is proposed as the command center in which the staff can perform their activities from a prime location and will allow the student to develop their academic life safely and often without realizing their presence.



3 Elevation 1
1 : 200



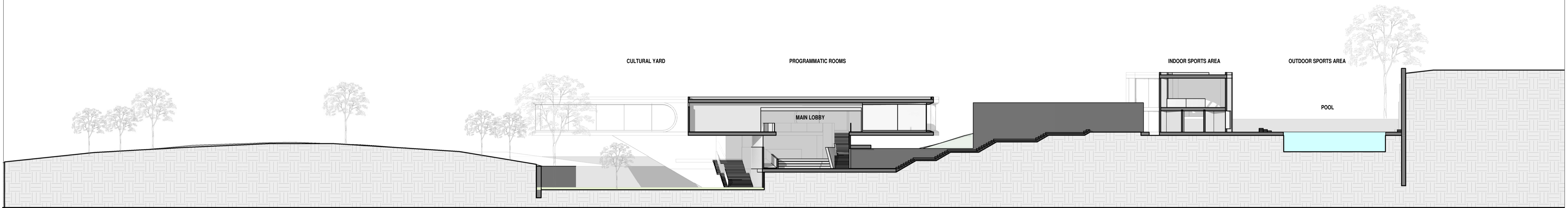
4 Elevation 2
1 : 200



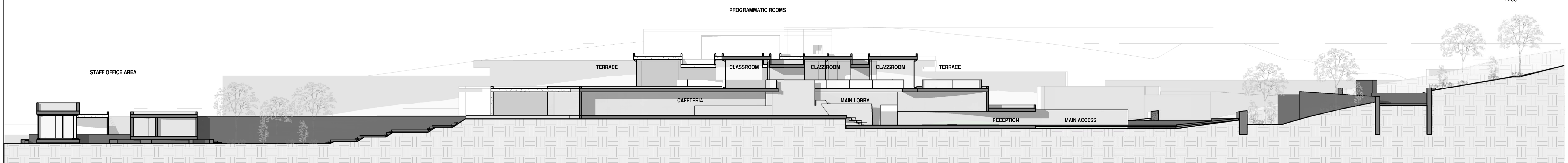
1 1st Level
1:500



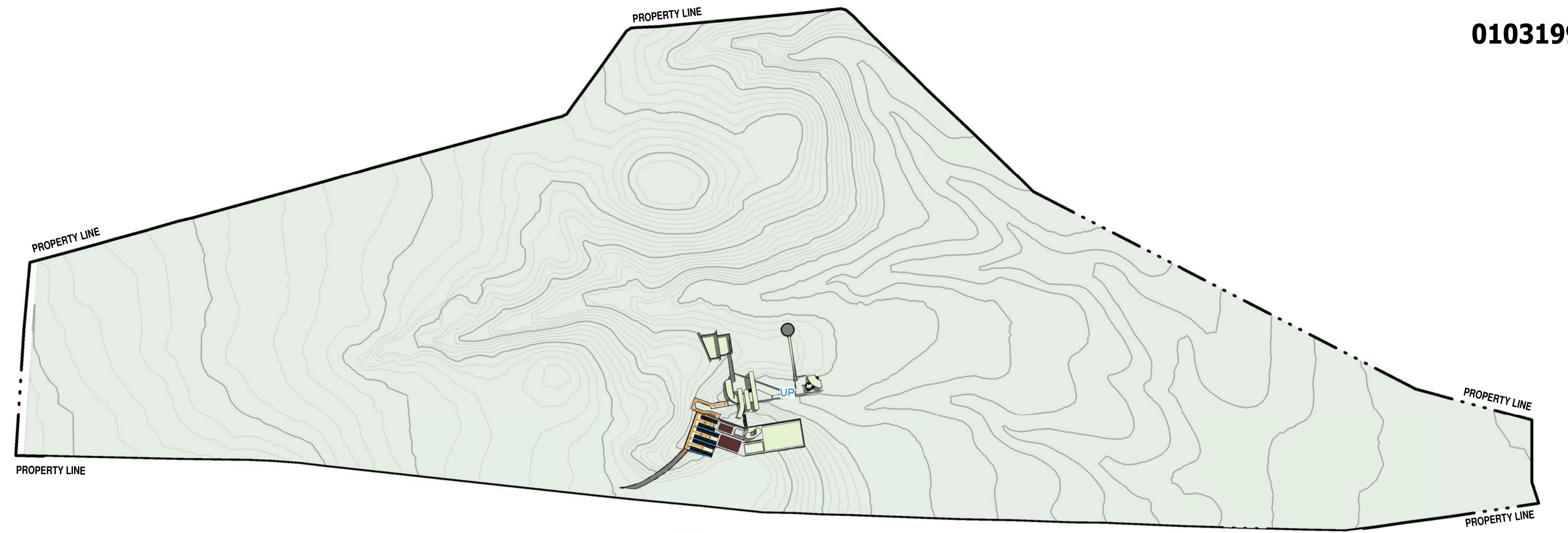
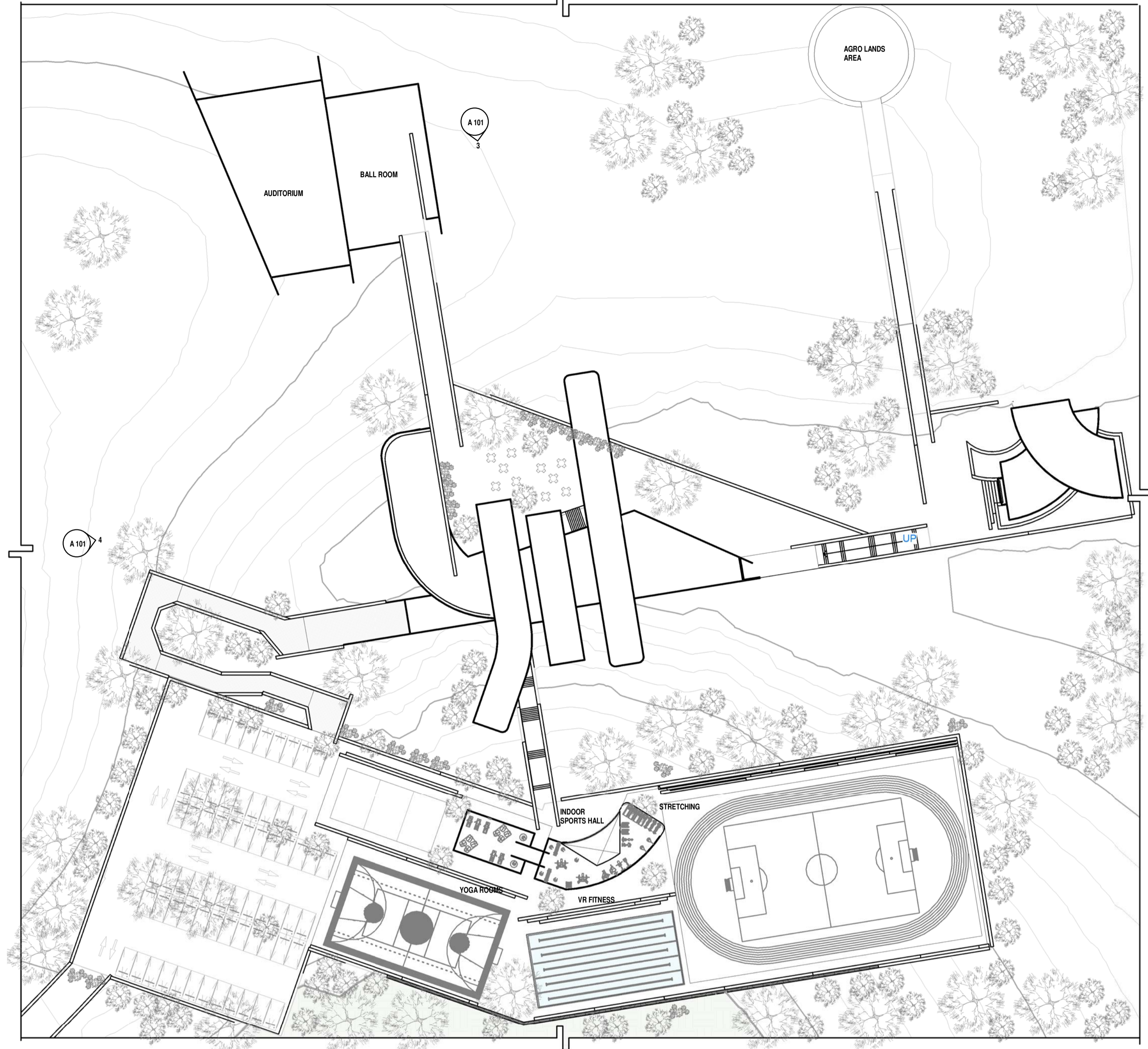
MAIN LOBBY
PROGRAMMATIC ROOMS



4 Corte General 2
1:200



6 Corte General 1
1:200



2 Site
1:4000

1 2nd Level
1:500

