

COAF SMART CAMPUS - ARMAVIR

Architecture and its integration in a remote and desert site is the main question that our proposal tries to address.

We believe that the project should reflect the COAF's horizontal and diffusive activities within the region and the social environment it operates in. Our approach revolves around working horizontally, with blurred limits, stressing the potential expansion of the smart campus' activities.

Thus, the aim is not to create an architectural beacon, nor to be in contrast with the natural environment. This approach leads to having a free, undetermined and infinite form of architecture that adheres to the language of the "topos" and its anonymity: the imperceptible scale of the site and its unlimitedness.

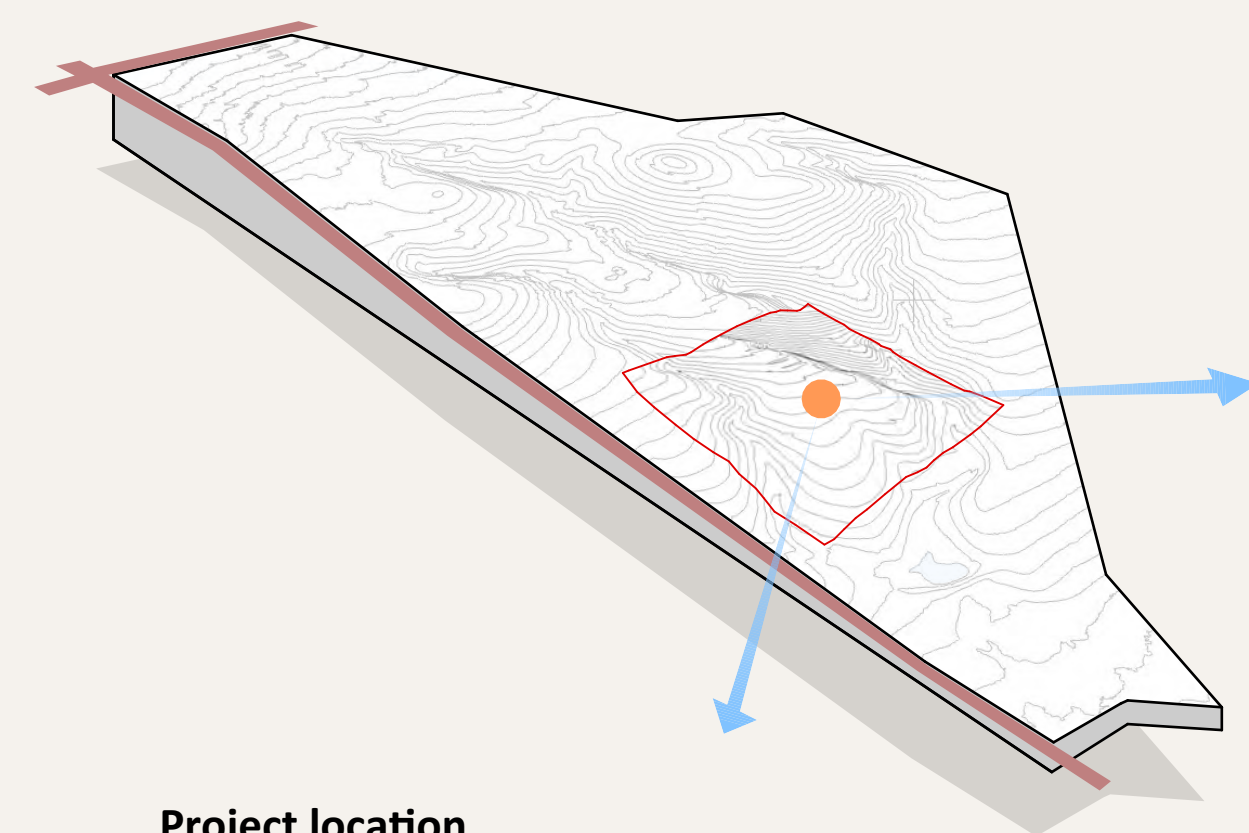
We extend the original concept of COAF's Debet campus further in terms of integration and harmony with the natural site to achieve a continuous shifting between inside and outside. This interaction and transparency offers a bright and inspiring atmosphere for visitors and learners, and ensures a complementarity between each educational facility.

Our main idea is manifested through the form of the dome – a roof naturally emerging from the site and covering different places and the different facilities; the roof being a sort of an extension of the given environment. Thanks to the slope, the emerging dome floats at 4-5m above the ground, so it offers the spaces continuous and panoramic views over the landscape. The curved roof has multiple openings above the spaces and internal gardens.

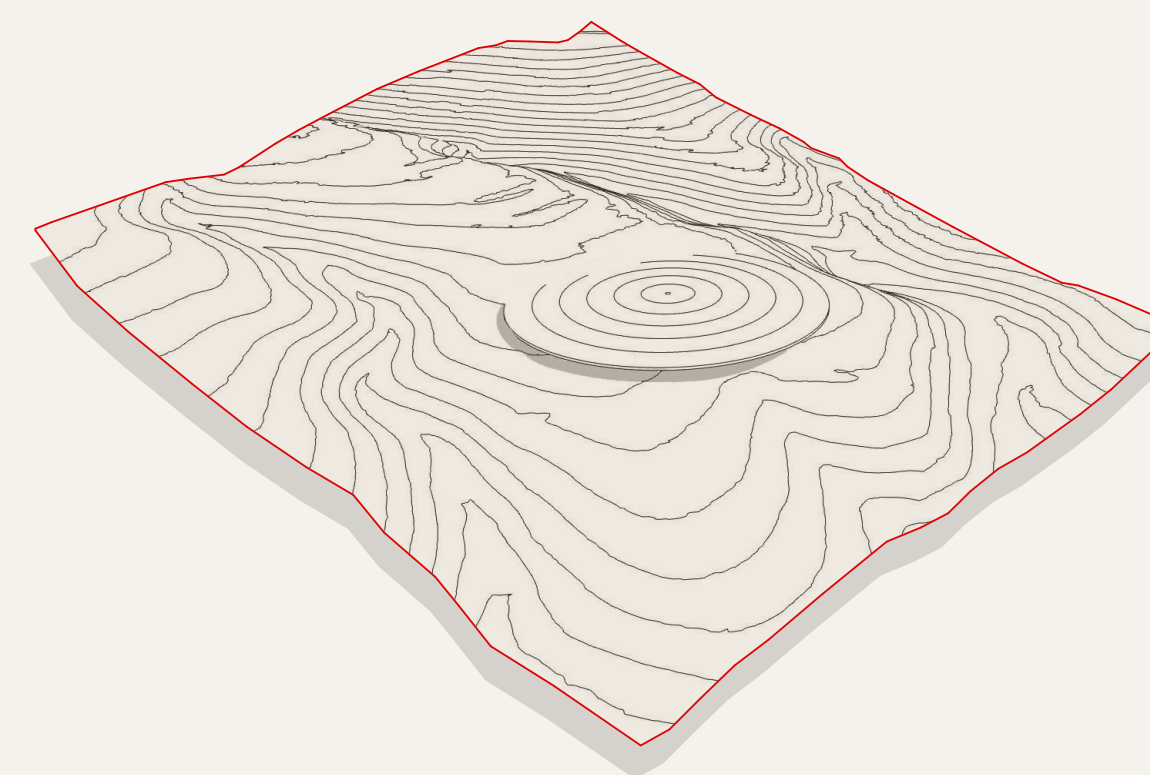
The facilities are distributed and grouped in three different entities. Each entity acts as a pavilion with its proper ambience and characteristics as host to the different activities. While the gap between these volumes represents the outline of COAF's Debet building and creates here an outside with the borders of an inside, and transforms a familiar interior to an interstitial space, a sort of non-building, stressing the ambiguous relationship between the outside and the inside, the built and the unbuilt, in order to experiment with visible and potential connections and complementarity. The inner open space becomes an active corridor linking the classrooms and the different facilities to each other, reflecting the dynamics of the smart center. For rainy/snowy seasons, an underground passage connects these facilities.

The smart center is accessible through a bridge which merges into a network of multilevel pathways for a walking tour around the buildings and on their green roofs. The Argo lands are located on a sloped part of the site; they are south oriented and are in direct connection with the smart center's inner open space.

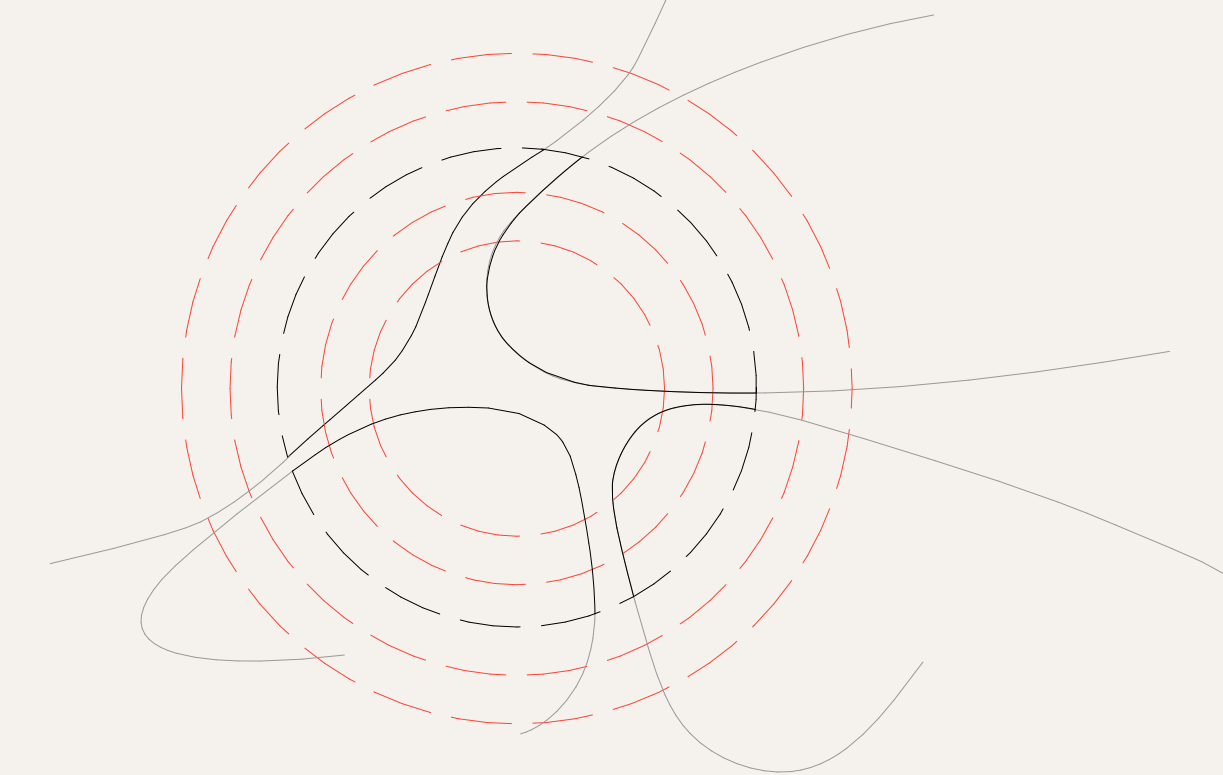
Link to video: www.youtube.com/watch?v=2Vl3uy-ybDk&ab_channel=Unknown



Project location
The location is chosen based on the slope of the area and its panoramic disposition



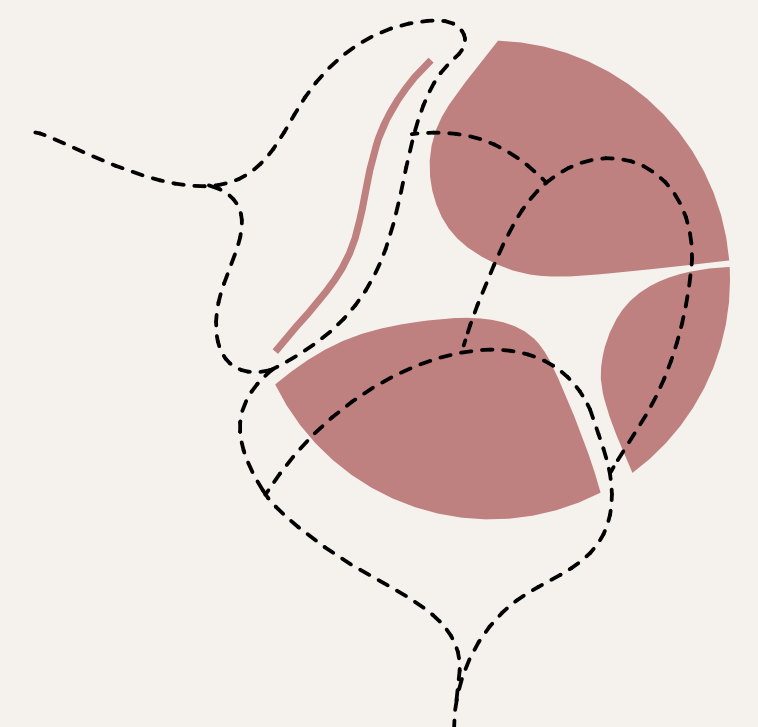
Horizontality and infinite continuity
Diffusion and openness, fusion and organic integration with the topography



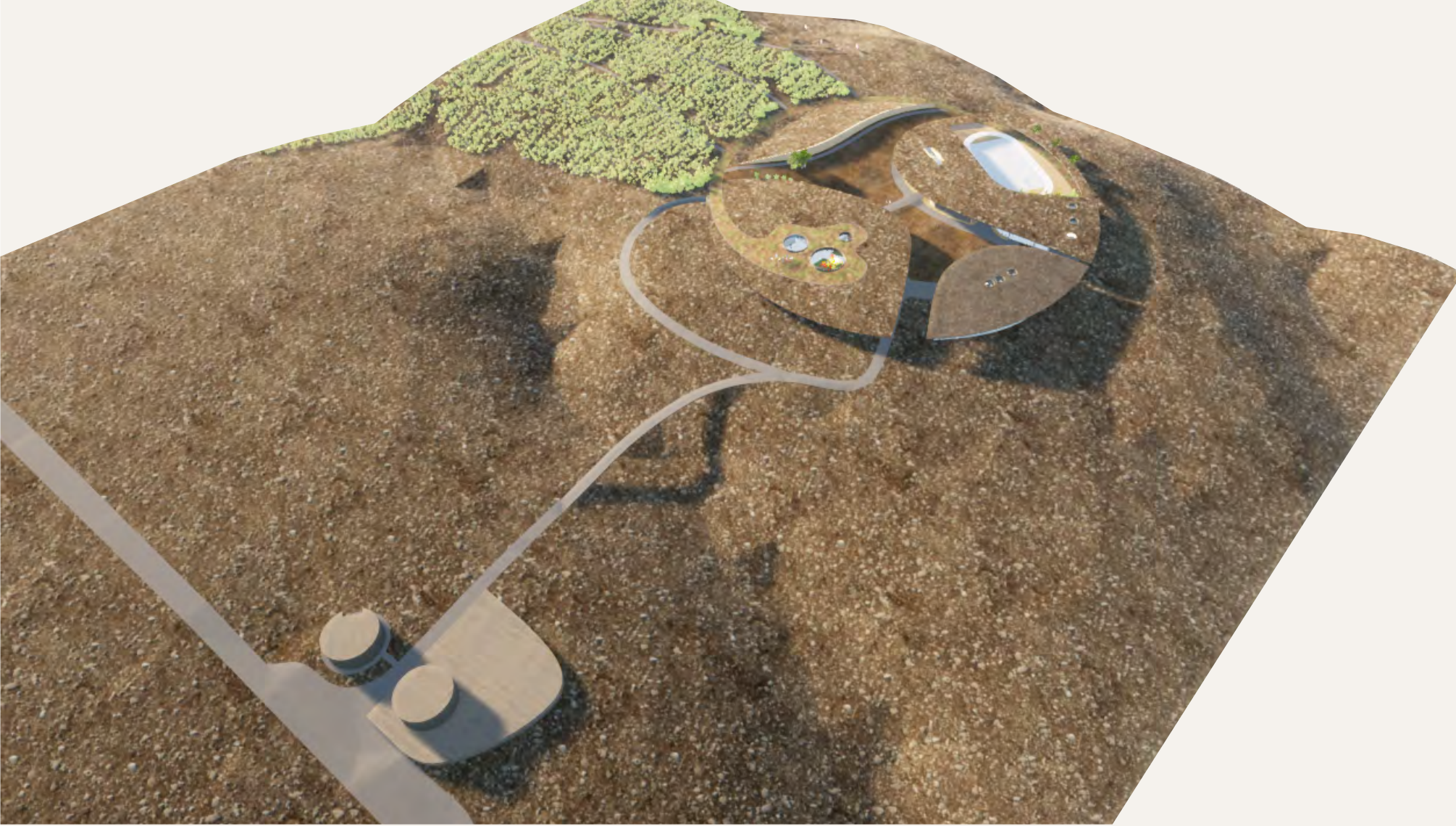
Representation of the core concept
Reinterpreting COAF's original vision, to link and develop the Fund's identity



Complementarity of differences
Built/unbuilt, interior/exterior



Network of pathways
and multilevel connections



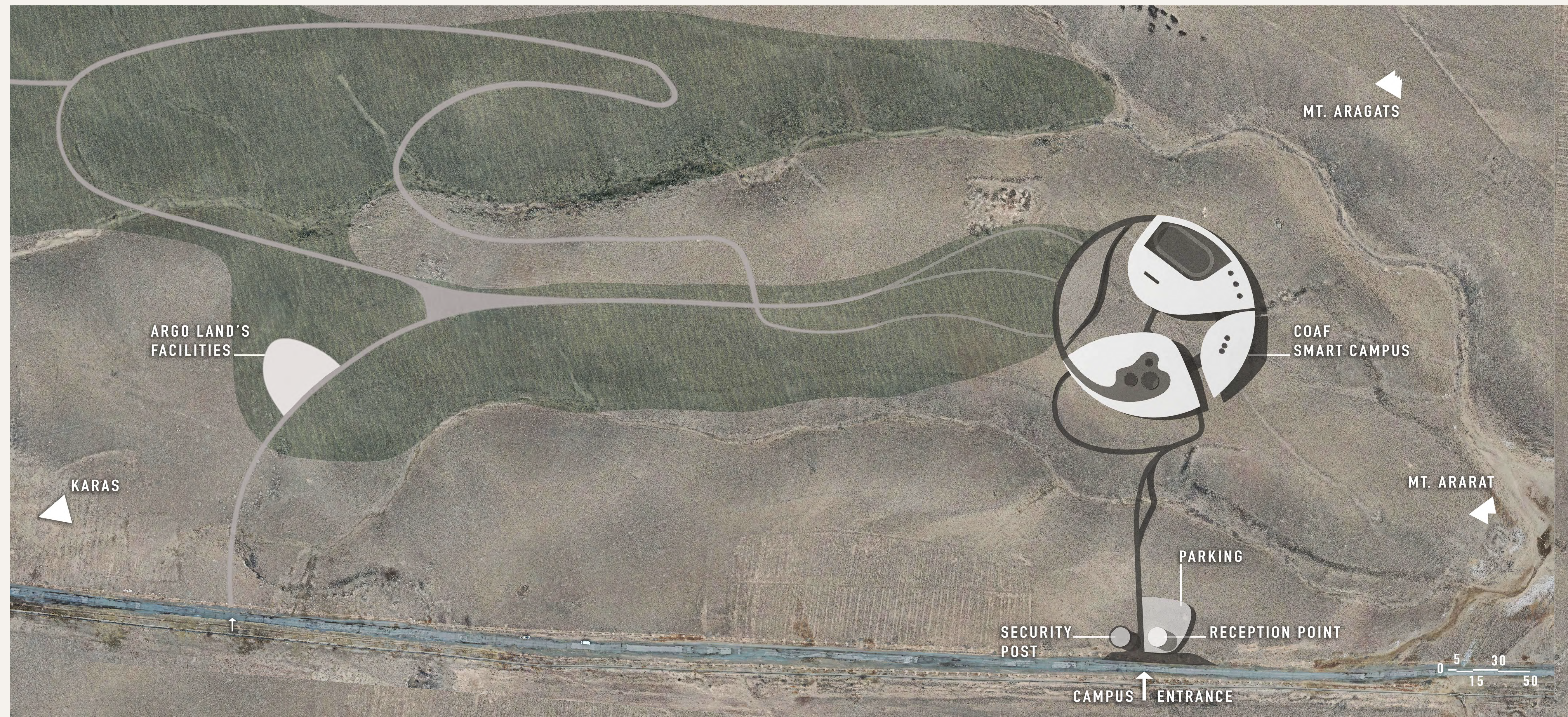
Aerial view of the project



Aerial view of the sports field, with the Argo lands on the right



P1.View towards the cafeteria and other facilities



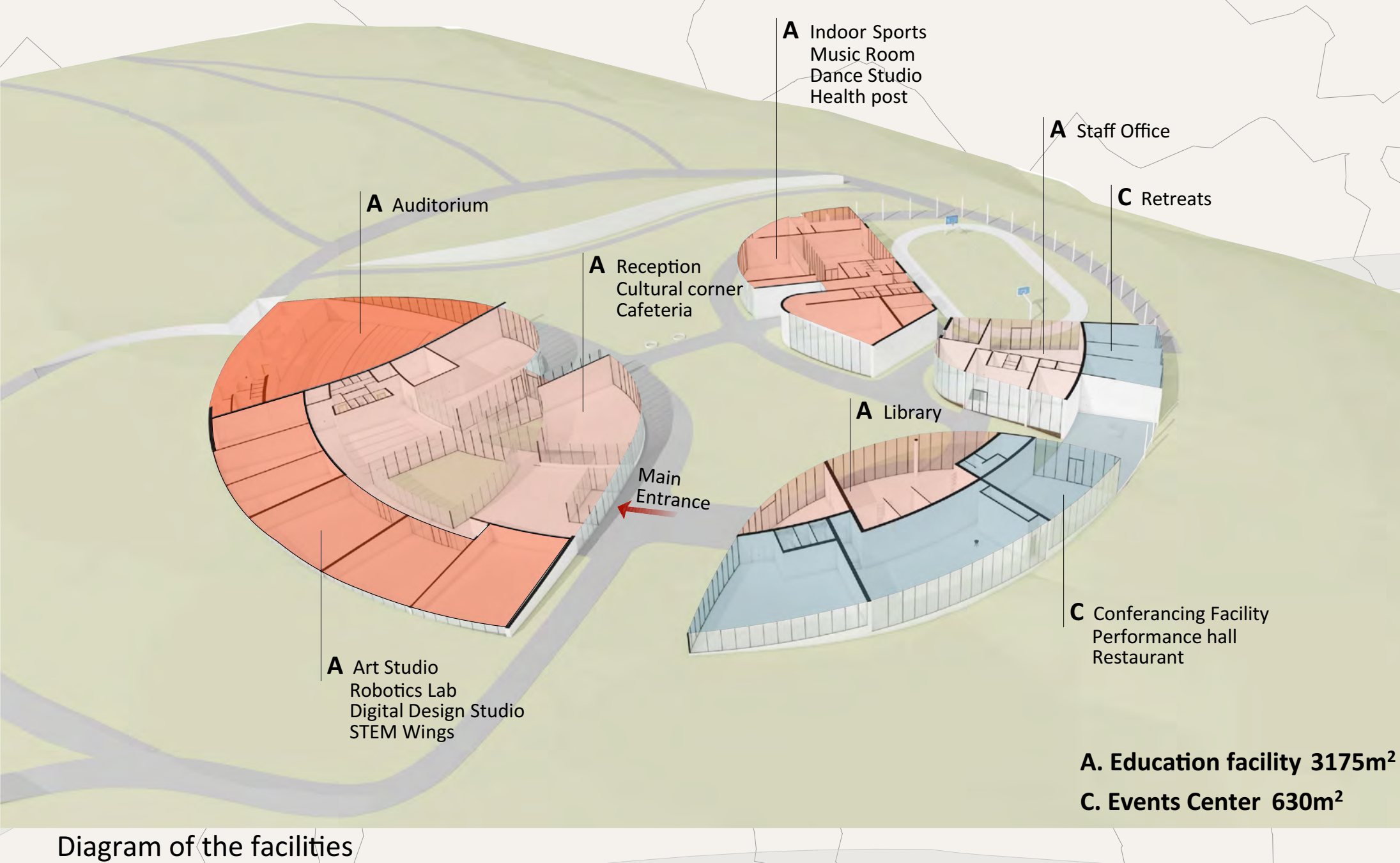
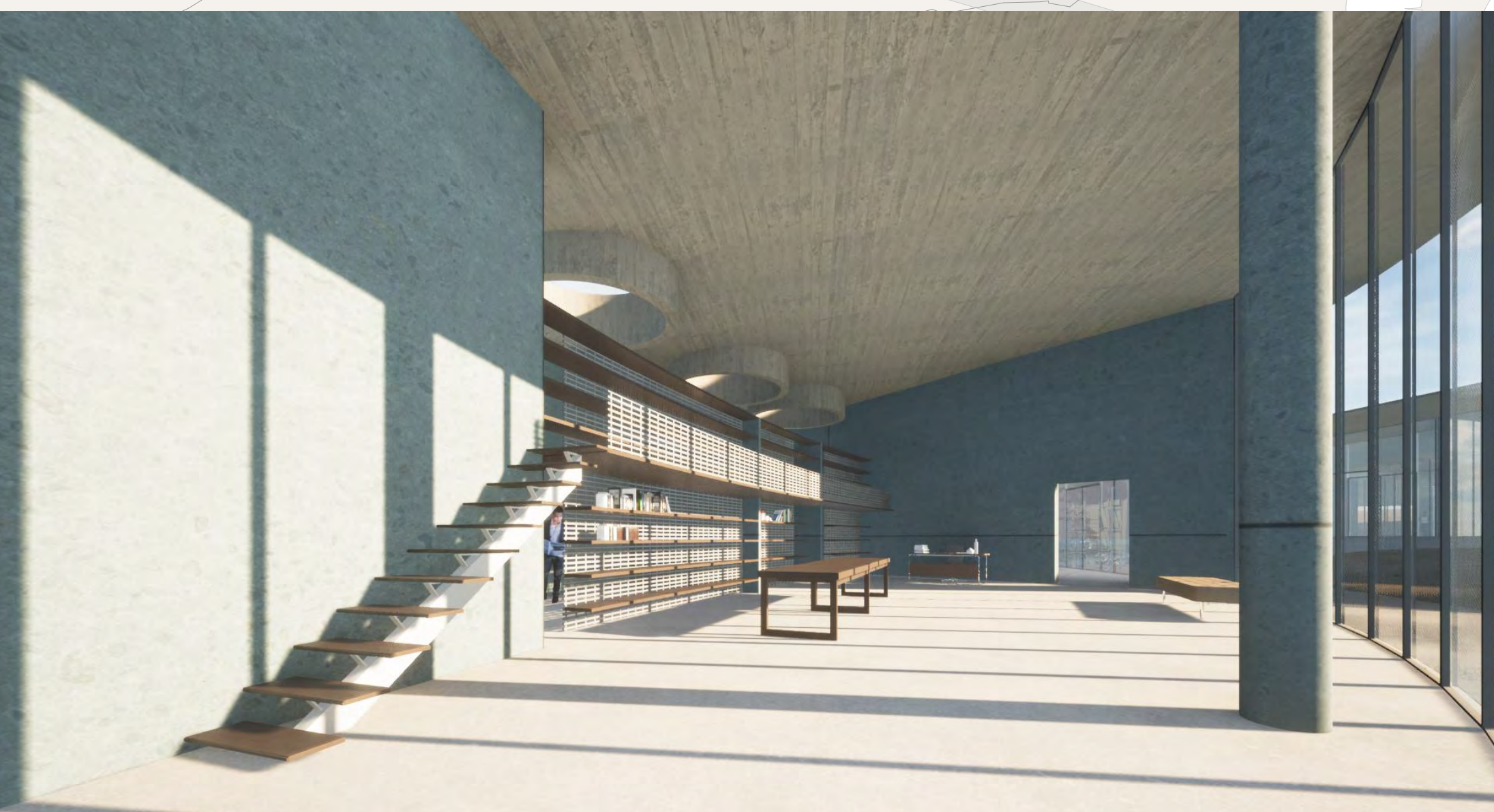


Diagram of the facilities



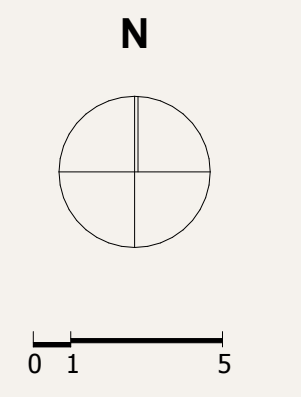
P2. View from the common space

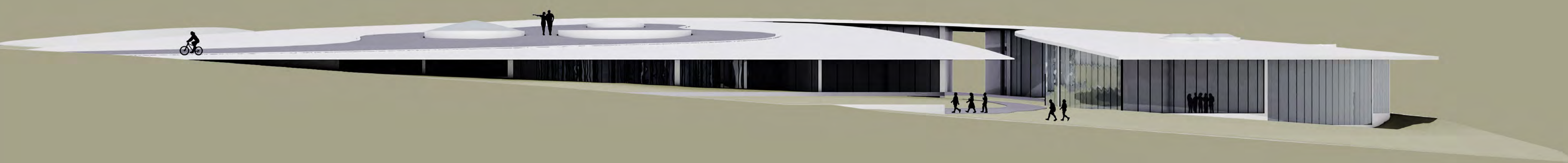


P3. View from the library

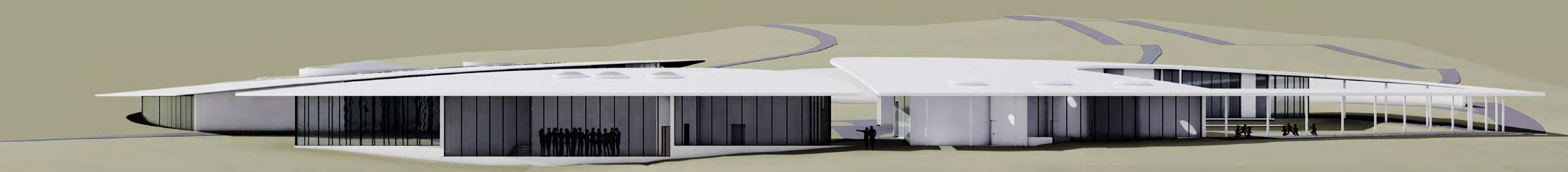


P4. View from the reception hall





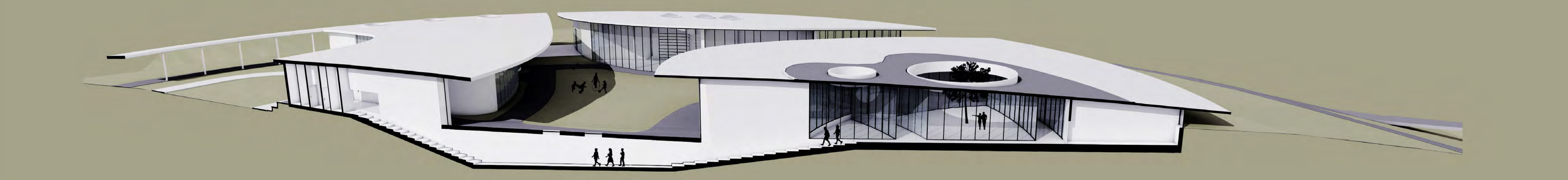
Elevation 1



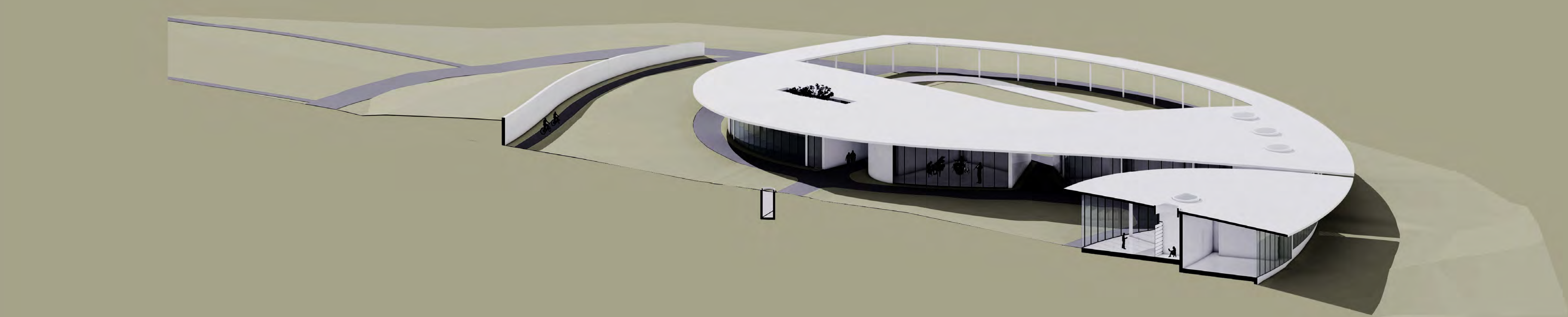
Elevation 2



Section 1



Section 2



Section 3



P5. View of the restaurant and the fire pit with a panorama on Mount Aragats



P6. View from the auditorium



P7. View from the cafeteria towards the dance studio and the music room



P8. View from the dance studio